

Novell ZENworks™ for Desktops 3.2 Preboot Services

3.2

www.novell.com

MENU EDITOR USER GUIDE



Novell®

Legal Notices

Novell, Inc. makes no representations or warranties with respect to the contents or use of this documentation, and specifically disclaims any express or implied warranties of merchantability or fitness for any particular purpose. Further, Novell, Inc. reserves the right to revise this publication and to make changes to its content, at any time, without obligation to notify any person or entity of such revisions or changes.

Further, Novell, Inc. makes no representations or warranties with respect to any software, and specifically disclaims any express or implied warranties of merchantability or fitness for any particular purpose. Further, Novell, Inc. reserves the right to make changes to any and all parts of Novell software, at any time, without any obligation to notify any person or entity of such changes.

This product may require export authorization from the U.S. Department of Commerce prior to exporting from the U.S. or Canada.

Copyright © 1993-2001 Novell, Inc. All rights reserved. No part of this publication may be reproduced, photocopied, stored on a retrieval system, or transmitted without the express written consent of the publisher.

U.S. Patent Nos. 5,349,642; 5,594,863; 5,633,931; 5,692,129; 5,758,069; 5,761,499; 5,781,724; 5,781,733; 5,859,978; 5,893,118; 5,905,860; 6,023,586; 6,105,069; 6,115,594; 6,173,289; 6,144,959. Patents Pending.

Novell, Inc.
1800 South Novell Place
Provo, UT 84606
U.S.A.

www.novell.com

Menu Editor User Guide
September 2001
103-000186-001

Online Documentation: To access the online documentation for this and other Novell products, and to get updates, see www.novell.com/documentation.

Novell Trademarks

Novell is a registered trademark of Novell, Inc., in the United States and other countries.

ZENworks is a trademark of Novell, Inc., in the United States and other countries.

Third-Party Trademarks

All third-party trademarks are the property of their respective owners.

About This Guide

This guide contains information that will help you understand and use the ZENworks™ for Desktops Preboot Services Menu Editor utility.

Documentation Conventions

In Novell® documentation, a greater than symbol (>) is used to separate actions within a step and items in a cross-reference path.

A trademark symbol (®, ™, etc.) denotes a Novell trademark. An asterisk (*) denotes a third-party trademark.

1

Using the Preboot Services Menu Editor

What is PXE?

The Preboot Execution Environment (PXE), pronounced “pixie,” is a client/server interface that allows networked computers to be configured and booted remotely by a network administrator using ZENworks™ for Desktops (ZfD) 3.2 Preboot Services. This interface enables the administrator to manage client workstations on a LAN from a remote location, even if the workstations have empty disk drives.

A PXE-capable workstation, if enabled, has either a universal service agent loaded locally in its BIOS or LAN adapter, or it has ZfD Preboot Services PXE-on-Disk available on a hard drive or inserted in a floppy drive. The agent allows the workstation to interact with a remote ZfD Preboot Services server to dynamically retrieve a requested boot image across the network.

What is the ZfD Preboot Services Menu?

When a PXE-enabled workstation is booted, it looks for the server where Preboot Services is installed. After using DHCP to obtain IP information, it checks the Preboot Services Transaction Server to see if there is any imaging work to do. If there is imaging work to do, the workstation displays a default ZfD Preboot Services menu displaying the following options:

- ◆ Start ZENworks Imaging in Automatic Mode
- ◆ Start ZENworks Imaging in Maintenance Mode
- ◆ Disable the ZEN Partition
- ◆ Enable the ZEN Partition

What is the ZfD Preboot Services Menu Editor?

If you want to create a custom Preboot Services Menu, you can use the ZfD Preboot Services Menu Editor to set and run your own actions and DOS utilities on the client workstation. Novell provides this utility as a service; no custom DOS or Linux utilities have been developed by Novell.

The Menu Editor is a Windows*-based, option-driven utility that lets you do the following on the Preboot Services menu:

- ◆ add menu items or submenus to the Preboot Services menu
- ◆ add executable commands to be performed on the client workstation
- ◆ delete a submenu or an action from an existing menu

The Menu Editor generates menu files and stores them on the ZfD Preboot Services server. These files can be selected from the Menu Editor interface and downloaded to a Preboot Services client workstation.

Installation

If you chose the PXE component during the ZfD 3.2 Preboot Services installation program, the Menu Editor is automatically installed on Windows NT/2000 servers you designate as a Preboot Services server. For more information, see [Preboot Services CD Installation Options](#) in ZENworks for Desktops 3.2 *Getting Started*. The Menu Editor is not installed to a NetWare server during the Preboot Services installation and must be accessed manually from a Windows workstation.

Accessing the Menu Editor

If you installed to a Windows server, you can access the Menu Editor from the Windows desktop (after the PXE-enabled Windows workstation is imaged) by clicking Start > Programs > ZEN Preboot Services > ZEN Preboot Services Menu Editor.

If you need to access the Menu Editor from a NetWare server, locate the files on the ZfD 3.2 Preboot Services CD in the \MENU EDITOR folder > copy them to your NetWare server. Then, from a Windows machine, you can map a drive to the location on the server and run MenuEditor.

Using the ZfD Preboot Services Menu Editor

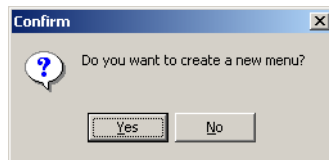
Although you will probably use the default PXE Menu for ZfD Preboot Services, you may want to take advantage of the flexibility of the Preboot Services Menu Editor to create a new menu or modify an existing one. This section contains the following information:

- ♦ “Creating a Preboot Services Menu” on page 9
- ♦ “Creating a Submenu” on page 10
- ♦ “Creating Functions Within the Menu” on page 11
- ♦ “Exporting the .MNU File to a .DAT File” on page 12

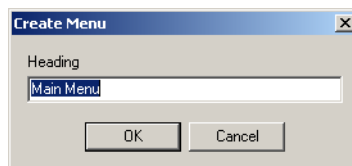
Creating a Preboot Services Menu

Use the following steps to create a new Preboot Services menu using the ZfD Preboot Services Menu Editor:

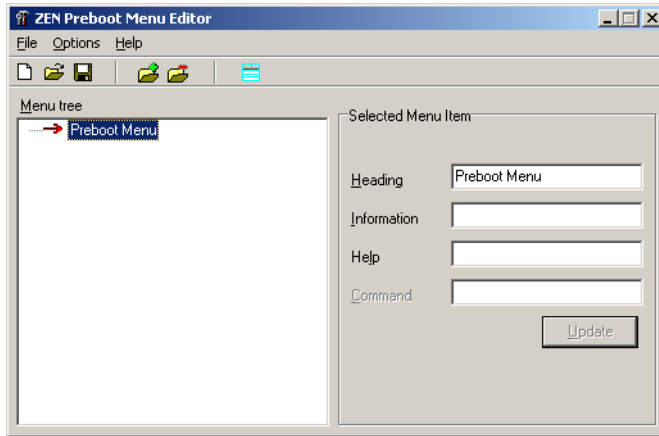
- 1** From the Windows desktop, click Start > Programs > ZEN Preboot Services > ZEN Preboot Services Menu Editor to display the following dialog box:



- 2** Click Yes to display the Create Menu dialog box.



- 3** Enter the name of menu you want to create > click OK to display the ZEN Preboot Menu Editor window.



The Menu Editor Interface

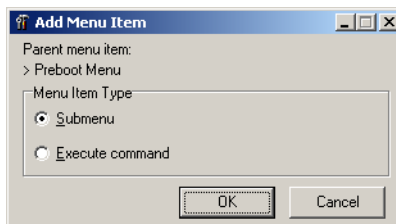
The Menu Editor interface is not available unless you are creating or editing an existing menu. Add and delete functions are available from the Options menu or from icons on the toolbar. Menu Editor functions can also be initiated with keyboard commands from a Windows workstation. For example, pressing Insert while in the Menu Editor adds a menu item, while pressing the Delete key deletes a menu item.

You can enter descriptive text about the menu in the Information field. You can also add help by entering appropriate text in the Help field.

Creating a Submenu

If you want to create your own functions for the Preboot Services menu, you need to create a submenu of these functions. Use the following steps to create a submenu.

- 1 Select Add from the Options menu to display the Add Menu Item window.



- 2 Select Submenu > click OK to display the Add Menu dialog box.
- 3 In the Heading field of the dialog box, enter the text you want to use as the option in the submenu > click OK.

The Menu Editor displays the submenu option as a subordinate item to the main menu you have already created.

- 4 Enter descriptive and help text in the Information and Help fields.
- 5 Click Update to save the text of the submenu option and any accompanying text you have created.

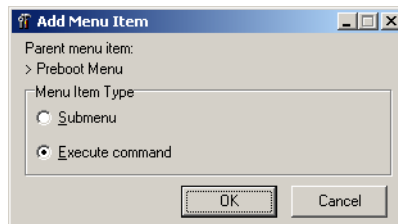
Although the submenu item is now created and will appear on the Preboot Services Menu, it will not launch any utility: it is merely a text heading that serves as a navigation tool to options that actually perform functions.

Creating Functions Within the Menu

As stated earlier in this document, Zfd 3.2 Preboot Services ships with a preboot menu that allows only limited, predesigned actions from the client workstation. Novell does not ship other DOS or Linux utilities. However, if you want to add functionality of your own, you can do so with the Preboot Services Menu Editor.

To add executable commands to the Menu Editor, use the following steps:

- 1 From the Preboot Services Menu Editor window, select a menu item > click Options > Add to display the Add Menu Item window.



- 2 Click Execute Command > OK.
- 3 From the Execute Command dialog box, enter menu text that describes the functionality of your program > click OK.
- 4 Enter the command parameters of the utility you want to run > click OK.
- 5 Enter descriptive text about the item you have created > click OK.

- 6** Enter any help text that you want to be accessible by an F1 command for this menu item > click OK.
- 7** When you have finished creating the menu, click File > Save to save the structure.

By default, the file is saved in .MNU format, which is used only the Preboot Services Menu Editor interface as a template. To be used by the Preboot Services menu, this file must be exported to a binary (.DAT) format. For more information, see [“Exporting the .MNU File to a .DAT File” on page 12.](#)

Exporting the .MNU File to a .DAT File

To create a .DAT file for the Preboot Services Menu using a .MNU file, use the following steps:

- 1** Open the Preboot Services Menu Editor > click No to display the existing .MNU files saved to your default folder (the same folder where the menu editor, MEDITOR.EXE, resides.)
- 2** Select the .MNU file of the menu you want to export for later use by the Preboot Services menu > click File > Open.
- 3** Click File > Export to save the .MNU in binary format.

Note that the .DAT file is saved in the local folder from which you are running the Preboot Services Menu Editor. You must copy it to the \TFTP folder at the Preboot Services server.