

Client

XIV

- ♦ Chapter 64, “Setting Up GroupWise Modes and Accounts,” on page 1055
- ♦ Chapter 65, “Setting Defaults for the GroupWise Client Options,” on page 1065
- ♦ Chapter 66, “Distributing the GroupWise Client,” on page 1101
- ♦ Chapter 67, “Supporting the GroupWise Client in Multiple Languages,” on page 1121
- ♦ Chapter 68, “Tools for Analyzing and Correcting GroupWise Client Problems,” on page 1123
- ♦ Chapter 69, “Startup Switches for the GroupWise Client,” on page 1125

Setting Up GroupWise Modes and Accounts

64

This section will familiarize you with GroupWise® modes and accounts, and help you set up users to use them.

- ♦ [Section 64.1, “GroupWise Modes,” on page 1055](#)
- ♦ [Section 64.2, “Accounts,” on page 1062](#)

64.1 GroupWise Modes

GroupWise provides three different ways to run the GroupWise client: Online mode, Caching mode, and Remote mode.

- ♦ [Section 64.1.1, “Online Mode,” on page 1055](#)
- ♦ [Section 64.1.2, “Caching Mode,” on page 1055](#)
- ♦ [Section 64.1.3, “Remote Mode,” on page 1057](#)

NOTE: Remote mode is not available in the GroupWise Cross-Platform client.

Most GroupWise features are available in all three GroupWise modes, with a few exceptions. Subscribing to other users’ notifications is not available in Caching mode. Subscribing to other users’ notifications and Proxy are not available in Remote mode.

64.1.1 Online Mode

When users use Online mode, they are connected to their post office on the network. The user’s mailbox displays the messages and information stored in the network mailbox (also called the Online Mailbox). Online mode is connected to the network mailbox continuously. In Online mode, if the Post Office Agent shuts down or users lose network connection, they temporarily lose the connection to their mailboxes.

Users should use this mode if they do not have a lot of network traffic, or if they use several different workstations and do not want to download a local mailbox to each one.

64.1.2 Caching Mode

Caching mode stores a copy of a user’s network mailbox, including messages and other information, on the user’s local drive. This allows GroupWise to be used whether or not the network or Post Office Agent is available. Because the user is not connected to the network all the time, this mode cuts down on network traffic and has the best performance. A connection is made automatically to retrieve and send new messages. All updates are performed in the background so GroupWise work is not interrupted.

Users should use this mode if they have enough disk space on the local drive to store mailbox.

Several users can set up their Caching Mailboxes on a single shared computer.

If users run Caching Mode and Remote Mode on the same computer, the same local mailbox (also called the Caching Mailbox or Remote Mailbox) can be used to minimize disk space usage.

If disk space is limited, users can restrict the items that are downloaded to the local mailbox. They can specify to get the subject line only or specify a size limit.

If users back up their Caching Mailboxes, they can protect items that might be deleted if the system is set up to automatically clean up items (or if the system administrator runs an Expire and Reduce).

To use Caching mode, the client installation must be a standard installation, not a workstation installation.

Allowing or Forcing Use of Caching Mode

The system administrator can allow or disallow the use of Caching mode, and can also force users to log in to GroupWise in Caching mode.

If the system administrator forces Caching mode on Cross-Platform client users and then restricts Online mailbox size so that users have items in their Caching mailboxes that are no longer available online, the administrator needs to make sure users understand about doing backups. See “[Backing Up Your Mailbox](#)” in “[Managing Your Mailbox](#)” in the *GroupWise 7 Cross-Platform Client User Guide*.

- 1 In ConsoleOne®, click *Tools > GroupWise Utilities > Client Options*.
- 2 Click *Environment > Client Access*.
- 3 Select or deselect *Allow Use of Caching Mode*.
- 4 Select or deselect *Force Use of Caching Mode*.

Specify the number of days before Caching mode will be enforced. This allows the user to continue using Online mode until the grace period has passed. The grace period begins the first time the user connects to the POA. The setting applies per user per workstation.

The *Force Caching Mode* setting is not enforced on a workstation that does not have enough disk space for a Caching mailbox. The amount of disk space that is required is: the size of the mailbox + 20 MB + 25% of the mailbox size.

The *Force Caching Mode* setting is also not enforced when a user connects from a shared Windows workstation or terminal server if you configure these workstations to be excluded. You do this by setting a registry key on the Windows workstation. The registry key is in HKEY_LOCAL_MACHINE. Under `Software\Novell\GroupWise\Client`, add a dword value named `No Local Store` with a value of 1. This prevents the user from creating a Caching or Remote mailbox by using the GroupWise Windows client menus. However, the user can still create a Caching or Remote mailbox by using the startup switches /pc, /pr, or /ps.

Downloading the System Address Book

When users prime their Caching mailboxes, they receive a copy of the system address book. After the initial priming of the Caching mailbox, users can re-download the system address book and their personal address books in Caching mode by clicking *View > Retrieve System Address Book* or *View > Retrieve Personal Address Book* while in the Address Book. Address books also be re-downloaded in Caching mode when users click *Tools > Retrieve Entire Mailbox*.

Users can also specify to download the system address book (and any rules they have created) on a regular basis.

- 1 In Remote or Caching mode, click *Accounts > Account Options*.
- 2 Right-click the GroupWise account, then click *Properties > Advanced*.
- 3 Select *Refresh Address Books and Rules Every ___ Days*. By default this is set to 7 days, but it can be changed.

If you configure the POA to generate the system address book regularly, Caching mode users always have a current copy to download.

- 1 In ConsoleOne, right-click the POA object, then click *Properties > GroupWise > Maintenance*.

On the Maintenance page, make sure that *Generate Address Book for Remote* is selected. You can choose the time when you want the generation to take place.

If you want to generate the system address book for download more than once a day, you can delete the existing `wprof50.db` file from the `\wpcsout\ofs` subdirectory of each post office. A new downloadable system address book is generated automatically for users on each post office.

64.1.3 Remote Mode

Remote mode is familiar to GroupWise users who use Hit the Road. Similar to Caching mode, a copy of the Online mailbox, or the portion of the mailbox that users specify, is stored on the local drive. Users can periodically retrieve and send messages with the type of connection they specify (modem, network, or TCP/IP). Users can restrict what is retrieved, such as only new messages or only message subject lines.

NOTE: Remote mode is not available in the GroupWise Cross-Platform client.

To use Remote mode, the Windows client installation must be a standard (full) installation, not a workstation installation.

As an administrator, you can allow or disallow the use of Remote mode for client users.

- 1 In ConsoleOne, click *Tools > GroupWise Utilities > Client Options*.
- 2 Click *Environment > Client Access*.
- 3 Select or deselect *Allow Use of Remote Mode*.

The following topics explain the capabilities users have when they are allowed to use Remote mode.

- ♦ [“Remote Password” on page 1058](#)
- ♦ [“Async Gateway and X.25 Gateway” on page 1058](#)
- ♦ [“Remote Performance” on page 1058](#)
- ♦ [“Hit the Road” on page 1058](#)
- ♦ [“Remote Properties” on page 1059](#)
- ♦ [“Remote Mode Connections” on page 1059](#)

Remote Password

To use Remote mode, users must have a password set in Online mode. When they run in Remote mode for the first time, they can specify to use the same password in Remote mode or choose a new one.

Async Gateway and X.25 Gateway

For GroupWise to use a modem connection, the GroupWise Async Gateway or X.25 Gateway must be installed and configured in your GroupWise system. The gateway provides the means by which the client communicates with the GroupWise system.

Remote Performance

The system administrator can configure the MTA so that it re-directs Remote mode requests to other MTAs and POAs. The GroupWise client can establish a client/server connection to an MTA across the Internet. For more information, see [Section 41.2.2, “Enabling Live Remote,” on page 637](#).

Hit the Road

Users can use *Hit the Road* on the *Tools* menu (or switch from Online mode to Remote mode) to create, set up, or update the Remote mailbox. A copy of the mailbox is created on the user's local drive and any current connections are detected and set up. If users have already used Caching mode, the local mailbox has already been created. Users can also use *Hit the Road* to create setup files on a diskette to set up their Remote mailbox on a computer that's not connected to the network. Several users can set up their Remote mailboxes on a single shared computer.

Hit the Road creates a network connection for the method (direct connection or TCP/IP) GroupWise uses to access the user's post office. GroupWise can then use this connection, when running in Remote mode, to connect to the GroupWise system. For example, a network connection lets users of docked laptops run GroupWise in Remote mode and connect to the GroupWise system through the network connection rather than a modem connection.

Hit the Road also creates modem connections for Remote Profiles in the Async Gateway or X.25 Gateway. Remote Profiles let GroupWise connect to the GroupWise system.

To use *Hit the Road*:

- 1 In the GroupWise client, click *Tools* > *Hit the Road*.
- 2 Follow the prompts to create the Remote mailbox on the computer or on a diskette.

Installing the Remote Mailbox from Diskette

If *Hit the Road* created the user's Remote mailbox on diskette, the user needs to install the Remote mailbox on the computer that will be running in Remote mode.

- 1 Insert the diskette containing the Remote mailbox into the computer's disk drive.
- 2 From the Windows Taskbar, click *Start* > *Run*.
- 3 Type `a:\setup`, then click *OK*.

Follow the prompts. The setup program creates a Remote mailbox and copies the required files to the computer's hard drive.

Remote Properties

Users can change the way Remote mode is set up, including the connection, time zone, signature, and so forth, in Account Options on the Accounts menu. Remote is listed as an account.

By default, if an item is deleted from the Remote mailbox, the item is deleted from the Online mailbox the next time a connection is made. Deletion options in Remote Properties can be changed so that an item deleted from the Remote mailbox stays in the Online mailbox or vice versa.

Remote Mode Connections

- ♦ “Setting Up a Modem Connection” on page 1059
- ♦ “Setting Up a Network Connection” on page 1060
- ♦ “Setting Up a TCP/IP Connection” on page 1061

Setting Up a Modem Connection

If you are going to connect with a modem, you must create at least one modem connection. A modem connection provides GroupWise with the information it needs to connect to the GroupWise system through the GroupWise Async Gateway or GroupWise X.25 Gateway.

To set up a modem connection:

- 1 In the client, log in or change to Remote mode.
- 2 Click *Accounts > Send/Retrieve > GroupWise Options*.
- 3 Click *Configure > Connect To > New*.
- 4 Make sure *Modem* is selected, then click *OK*.
- 5 Type a descriptive name for the modem connection in the Connection Name box.
- 6 Click the country code, then type the area code and phone number for the gateway to the master GroupWise system.

You can use a comma (,) to signal a one-second pause in dialing such as 9, (800) 555-5555. The 9 accesses an outside line and the comma causes a one-second pause to wait for the dial tone before dialing the number. If you enter dashes, spaces, and parentheses, they are ignored.
- 7 Type the login ID for the gateway.
- 8 Click *Password*, type the gateway password, then click *OK*.
- 9 Retype the password, then click *OK*.
- 10 Click the *Advanced* tab.
- 11 If your modem requires a script, specify the path to the script in the *Modem Script* box, click *Edit Script*, then specify the necessary *When Given* and *Respond With* commands.

To save the script without changing its filename, click *Save > Close*.

or

To save the script with a new filename, click *Save As*, type a name, then click *Close*.
- 12 Click a disconnect method.

Method	Description
When All Updates Are Received	Disconnects after requests are sent and after all responses to the requests are received (or disconnects automatically when the time allowed by the gateway has expired).
Do Not Wait for Responses	Disconnects immediately after requests are sent and pending responses are received. Pending responses are responses to other requests that are waiting to be downloaded to you.
Manually	Lets you manually control when to disconnect (or disconnects automatically when the time allowed by the gateway has expired).

- 13** Click *Attempts*, then specify the number of times to redial if the line is busy.
- 14** Click *Retry Interval*, then specify the time interval between each redial attempt.
- 15** Click *OK*.
- 16** Select the connection you want, then click *Select*.
- 17** Select the location you are connecting from in the *Connecting From* box. If none are listed, use the *Default Location* option.
If you need to create a new location, click the *Connect From* button. This is useful for laptop users who are calling into the GroupWise system from different geographic locations.
- 18** Select the modem to use for dialing up the gateway in the *Connect Using* box. If you have not yet defined your modem, click *Modem* to add a modem to your system.
- 19** Click *OK*, then click *Close*.

Setting Up a Network Connection

While running in Remote mode, GroupWise can connect to the user's Online mailbox using a network connection. A network connection is useful for laptop users connecting to the network through a docking station, or for remote users connecting through a modem using remote node software.

To create a network connection:

- 1** In the client, log in or change to Remote mode.
- 2** Click *Accounts > Send/Retrieve > GroupWise Options*.
- 3** Click *Network > OK*.
- 4** Type a descriptive name for the network connection in the *Connection Name* box.
- 5** Type the path to any post office directory in the master GroupWise system.
Users can connect to their own post offices or to any post office in the master GroupWise system to access their Online mailboxes.
- 6** Click a disconnect method.

Method	Description
When All Updates Are Received	Disconnects after requests are sent and after all responses to the requests are received (or disconnects automatically when the time allowed by the gateway has expired).
Do Not Wait for Responses	Disconnects immediately after requests are sent and pending responses are received. Pending responses are responses to other requests that are waiting to be downloaded to you.
Manually	Lets you manually control when to disconnect (or disconnects automatically when the time allowed by the gateway has expired).

7 Click *OK*.

8 Select the connection you want, then click *Select*.

9 Select the location you are connecting from in the *Connecting From* box. If none are listed, use the *Default Location* option.

If you need to create a new location, click the *Connect From* button. This is useful for laptop users who are calling into the GroupWise system from different geographic locations.

10 Click *OK*, then click *Close*.

Setting Up a TCP/IP Connection

A TCP/IP connection enables GroupWise, while running in Remote mode, to connect to the GroupWise system through a network connection using TCP/IP rather than a modem connection. A TCP/IP connection can be made through a network connection, such as a laptop connecting to the network through its docking station, or through a modem using remote node software.

To create a TCP/IP connection:

- 1** In the client, log in or change to Remote mode.
- 2** Click *Accounts > Account Options*, then double-click the Remote account.
- 3** Click *Connection > Connect To > New > TCP/IP > OK*.
- 4** Type a descriptive name for the TCP/IP connection.
- 5** Type the IP address or the DNS name.
- 6** Type the IP port for this address.
- 7** Click a disconnect method.

Method	Description
When All Updates Are Received	Disconnects after requests are sent and after all responses to the requests are received (or disconnects automatically when the time allowed by the gateway has expired).
Do Not Wait for Responses	Disconnects immediately after requests are sent and pending responses are received. Pending responses are responses to other requests that are waiting to be downloaded to you.

Method	Description
Manually	Lets you manually control when to disconnect (or disconnects automatically when the time allowed by the gateway has expired).

- 8 Click *OK*.
- 9 Select the connection you want, then click *Select*.
- 10 Select the location you are connecting from in the *Connecting From* box. If none are listed, use the *Default Location* option.

If you need to create a new location, click the *Connect From* button. This is useful for laptop users who are calling into the GroupWise system from different geographic locations.

- 11 Click *OK*, then click *Close*.

64.2 Accounts

- ♦ [Section 64.2.1, “Accounts Menu,” on page 1062](#)
- ♦ [Section 64.2.2, “Enabling POP3, IMAP4, and NNTP Account Access in Online Mode,” on page 1062](#)

64.2.1 Accounts Menu

In addition to the Remote account, users can access and configure POP3 and IMAP4 Internet e-mail accounts and NNTP News accounts from the Accounts menu. While the user is in Remote and Caching mode, POP3, IMAP4, and NNTP accounts are accessed without needing to connect to the GroupWise system. If the system administrator enables it, users can also access and configure their POP3, IMAP4, and NNTP accounts from the Accounts menu while in Online mode.

NOTE: The Accounts menu is not available in the GroupWise Cross-Platform client.

64.2.2 Enabling POP3, IMAP4, and NNTP Account Access in Online Mode

By default, POP3, IMAP4, and NNTP accounts can be added, configured, and accessed by users in Remote and Caching mode only. Account items and information are not accessible in Online mode, nor can items and information be uploaded to the Online mailbox until the system administrator enables it.

To enable POP3, IMAP4, and NNTP account access for clients in Online mode for an entire post office:

- 1 Make sure GroupWise 6.x agents have been installed. For more information, see [Part X, “Message Transfer Agent,” on page 611](#).
- 2 Make sure Internet Addressing is enabled. For more information, see [Section 4.11, “Internet Addressing,” on page 70](#).
- 3 In ConsoleOne, select the post office object.
- 4 Click *Tools > GroupWise Utilities > Client Options*.

- 5** Click *Environment > General*.
- 6** Select *Allow Use of POP and IMAP Accounts in the Online Mailbox*.
- 7** Select *Allow Use of News (NNTP) Accounts in the Online Mailbox*.
- 8** Click *OK*.

Setting Defaults for the GroupWise Client Options

65

The GroupWise® client includes options (preferences) that can be set by individual users. As a GroupWise administrator, you can determine the default settings for the options. If you don't want users to change the default settings you've established, you can lock the settings.

- ♦ [Section 65.1, “Client Options Summary,” on page 1065](#)
- ♦ [Section 65.2, “Setting Client Options,” on page 1069](#)
- ♦ [Section 65.3, “Resetting Client Options to Default Settings,” on page 1100](#)

65.1 Client Options Summary

Default settings can be established at the user level, the post office level, or the domain level. User settings override post office settings, and post office settings override domain settings. However, locked settings override unlocked settings even if they are set at a higher level.

- 1 In ConsoleOne®, select a Domain, Post Office, or User object, then click *Tools > GroupWise Utilities > Client Options*.



The client options table in this section summarizes all client options and provides links to descriptions of the options. For more detailed instructions, see [Section 65.2, “Setting Client Options,” on page 1069](#).

- ♦ [Environment](#)
- ♦ [Send](#)
- ♦ [Security](#)
- ♦ [Date and Time](#)

NOTE: The Cross-Platform client does not recognize all of the client options that can be set in ConsoleOne. Client options that the Cross-Platform client does recognize are marked with an asterisk (*) in the table.

Table 65-1 *Client Options*

Client Options Type	Client Options Tab	Client Options
Environment Click <i>Tools</i> > <i>GroupWise Utilities</i> > <i>Client Options</i> > <i>Environment</i>	<i>General</i>	Refresh Interval Allow Shared Folder Creation Allow Shared Address Book Creation Check Spelling Before Send Show Messenger Presence Allow Use of POP and IMAP Accounts in the Online Mailbox Allow Use of News (NNTP) Accounts in the Online Mailbox
	<i>Client Access</i>	Client Licensing Full License Mailboxes Limited License Mailboxes Client Login Mode Allow Use of Remote Mode Allow Use of Caching Mode Force Caching Mode after ___ Days Show Login Mode Drop-Down List on Client Toolbar
	<i>Views</i>	View Options Read Next After Accept, Decline, or Delete Open New View after Send Allowable Read Views Plain Text HTML Allowable Compose Views Plain Text HTML Disable HTML View
	<i>File Location</i>	Archive Directory Custom Views
	<i>Cleanup</i>	Mail and Phone Manual Delete and Archive Auto-Delete After Auto-Archive After Appointment, Task, and Note Manual Delete and Archive Auto-Delete After Auto-Archive After Empty Trash Manual Automatic After Purges Allow Purge of Items Not Backed Up Prompt before Purging Perform Maintenance Purges on Caching/Remote

Client Options Type	Client Options Tab	Client Options
	<i>Appearance</i>	Schemes GroupWise 6.5 Look GroupWise 7 Look Individual Settings Display Main Menu Display Nav Bar Display Main Toolbar Use GroupWise Color Schemes Sky Blue, Olive Green, Silver, Sky Blue, Spring Green, Sterling Silver Display Folder List Simple Folder List Full Folder List Long Folder List Display QuickViewer QuickViewer at Bottom QuickViewer at Right
	<i>Retention</i>	Retention
	Junk Mail	Junk Mail Handling Enable Junk Mail Using Junk Mail Lists Enable Junk Mail Using Personal Address Book Auto-Delete After Enable Blocked Mail Using Block Mail Lists
Send	<i>Send Options</i>	Classification* Normal, Proprietary, Confidential, Secret, Top Secret, For Your Eyes Only Priority* High, Standard, Low Reply Requested* When Convenient, Within __ Days Allow Use of Reply to All in Rules Allow Use of Internet Mail Tracking Expiration Date Delay Delivery Wildcard Addressing Notify Recipients Convert Attachments Allow Reply Rules to Loop Global Signatures
Click <i>Tools</i> > <i>GroupWise Utilities</i> > <i>Client Options</i> > <i>Send</i>	<i>Mail</i>	Create a Sent Item to Track Information Delivered, Delivered and Opened, All Information, Auto-Delete Sent Item Return Notification When Opened/Deleted None, Mail Receipt, Notify, Notify and Mail

Client Options Type	Client Options Tab	Client Options
	<i>Appointment</i>	<p>Create a Sent Item to Track Information Delivered, Delivered and Opened, All Information, Auto-Delete Sent Item</p> <p>Return Notification When Opened/Accepted/Deleted None, Mail Receipt, Notify, Notify and Mail</p>
	<i>Task</i>	<p>Create a Sent Item to Track Information Delivered, Delivered and Opened, All Information, Auto-Delete Sent Item</p> <p>Return Notification* When Opened/Accepted/Completed/Deleted None, Mail Receipt, Notify, Notify and Mail</p>
	<i>Note</i>	<p>Create a Sent Item to Track Information Delivered, Delivered and Opened, All Information, Auto-Delete Sent Item</p> <p>Return Notification When Opened/Deleted None, Mail Receipt, Notify, Notify and Mail</p>
	<i>Security</i>	<p>Conceal Subject Require Password to Complete Routed Item Secure Items Options Do Not Allow Use of S/MIME* URL for Certificate Download Sign Digitally* Encrypt for Recipients Encryption Key Size</p>
	<i>Disk Space Management</i>	<p>User Limits Mailbox Size Limit Threshold for Warning Users Maximum Send Message Size Limits Apply to Cache Notify the Administrator When Threshold Limit Is Exceeded Notify the Administrator When Size Limit Is Exceeded</p>
	Global Signature	Global Signature
Security	<i>Password</i>	<p>Enter New Password* Clear User Password* Allow Password Caching Allow eDirectory Authentication Instead of Password Enable Single Sign-On Use Collaboration Single Sign-On (CASA)</p>

Client Options Type	Client Options Tab	Client Options
	<i>Macros</i>	View Macro Security Always Play Received Macros Never Play Received Macros Always Prompt Before Playing a Macro
	<i>Notify</i>	Check for Mail Every
Date and Time	<i>Calendar</i>	Month Display Option First of Week Highlight Day Show Week Number Appointment Options Include Myself on New Appointments Display Appointment Length As Duration, End Date and Time Default Length Alarm Options Set Alarm When Accepted Default Alarm Time Work Schedule Start/End Time Work Days
Click <i>Tools</i> > <i>GroupWise Utilities</i> > <i>Client Options</i> > <i>Date and Time</i>	<i>Busy Search</i>	Appointment Length Range and Time to Search Days to Search

65.2 Setting Client Options

Default settings can be established at the user level, the post office level, or the domain level. User settings override post office settings, and post office settings override domain settings. However, if you set a lock on an option at a higher level, the higher level then overrides the lower level setting.

To modify the default settings for the GroupWise client:

- 1 In ConsoleOne, click a Domain object if you want to modify the settings for all users in the domain.
 or
 Click a Post Office object if you want to modify the settings for all users in the post office.
 or
 Click a User object or GroupWise External Entity object if you want to modify settings for the individual user. To change the same settings for multiple users, select multiple objects.
- 2 With the appropriate GroupWise object selected, click *Tools* > *GroupWise Utilities* > *Client Options* to display the GroupWise Client Options dialog box.



- 3 To set the Environment options, click *Environment* > continue with [Section 65.2.1, “Modifying Environment Options,”](#) on page 1070.

or

To set the Send options, click *Send* > skip to [Section 65.2.2, “Modifying Send Options,”](#) on page 1082.

or

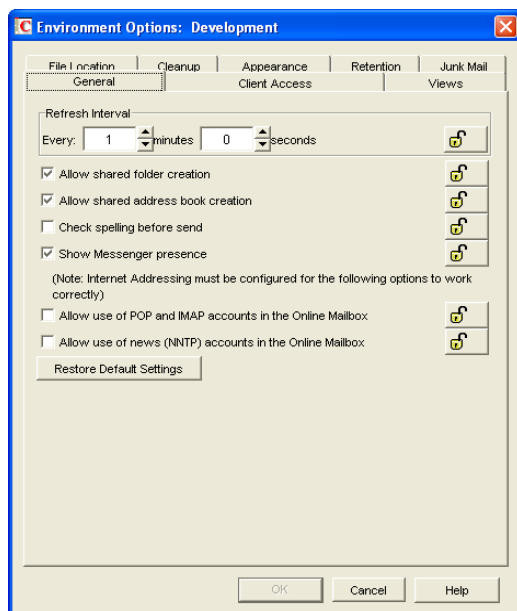
To set the Security options, click *Security* > skip to [Section 65.2.3, “Modifying Security Options,”](#) on page 1093.

or

To set the Date and Time options, click *Date and Time* > skip to [Section 65.2.4, “Modifying Date and Time Options,”](#) on page 1096.

65.2.1 Modifying Environment Options

- 1 If the Environment Options dialog box is not displayed, follow the instructions in [Section 65, “Setting Defaults for the GroupWise Client Options,”](#) on page 1065 to display the dialog box.



- 2 Click the tab that contains the options you want to change. Refer to the following sections for information about options:

[“Environment Options: General”](#) on page 1071

[“Environment Options: Client Access”](#) on page 1072

- “Environment Options: Views” on page 1075
- “Environment Options: File Locations” on page 1076
- “Environment Options: Cleanup” on page 1077
- “Environment Options: Appearance” on page 1078
- “Environment Options: Retention” on page 1079
- “Environment Options: Junk Mail” on page 1080

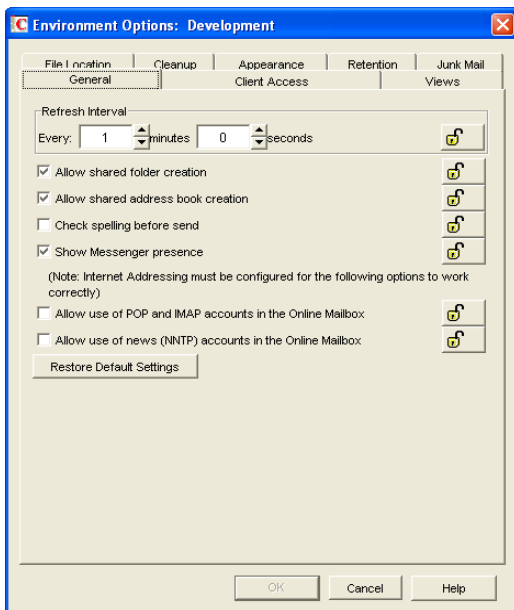
NOTE: The Environment options are not currently recognized by the Cross-Platform client.

- 3 If you want to prevent users from changing an option’s setting, click the lock button next to it. After you click it, the lock button indicates whether the setting is locked at the domain level, the post office level, or the user level.
- 4 If you want to return all the options on a tab to their default settings, click *Restore Default Settings*.
- 5 When finished, click *OK* to save your changes.

Environment Options: General

The *General* options determine such settings as the refresh interval for new messages, whether users can create shared folders and address books, and which types of accounts can be used while in Online mode.

Figure 65-1 Environment Options Dialog Box with the General tab Open



Refresh Interval

Determine how often the GroupWise client lists will be updated to reflect new message status. The default is 1 minute.

Allow Shared Folder Creation

Enables users to share folders with other users. By default, this option is enabled.

Allow Shared Address Book Creation

Enables users to share address books with other users. By default, this option is enabled.

Check Spelling Before Send

Automatically spell checks the message text of each item before the item is sent. By default, this option is disabled.

Show Messenger Presence

Displays the Messenger presence information in the GroupWise Windows client. Messenger presence enables users to easily choose instant messaging as an alternative to e-mail. Messenger presence icons appear in the From field of a received message, in the Quick Info for users specified in the To, CC, and BC fields of a new message, and in the Quick Info for users in the Address Book. Messenger presence is enabled by default.

The Address Book must be properly configured to support Messenger presence. See [Section 6.3, “Supporting Messenger Presence Display in GroupWise,” on page 90](#).

Allow Use of POP and IMAP Accounts in the Online Mailbox

Select this option to enable users to access POP and IMAP accounts while using the GroupWise client in Online mode.

By default, this option is disabled. If you enable this option, an *Accounts* menu is added to the GroupWise client, allowing users to add POP and IMAP accounts to GroupWise, set account properties, and send and retrieve items from their POP and IMAP accounts. In addition, users are allowed to upload POP and IMAP items from the Remote mailbox to the Online mailbox.

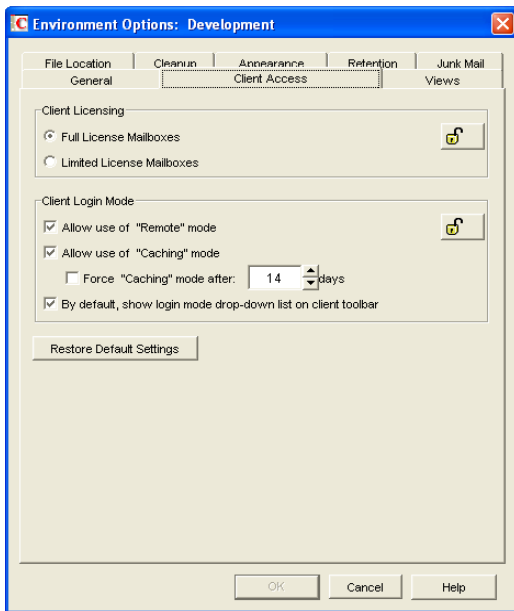
Allow Use of News (NNTP) Accounts in the Online Mailbox:

Select this option to enable users to set up newsgroup (NNTP) accounts while using the GroupWise client in Online mode.

Environment Options: Client Access

The *Client Access* options allow you to apply a license type (full or limited) to users' mailboxes and enable or disable the Remote and Caching modes in the GroupWise client for Windows.

Figure 65-2 Environment Options Dialog Box with the Client Access Tab Open



Client Licensing

GroupWise offers two types of mailbox licenses: full client mailbox licenses and limited client mailbox licenses.

A full client mailbox license has no mailbox access restrictions; the mailbox can be accessed by any GroupWise client (Windows or WebAccess) as well as any third-party plug-in or POP/IMAP client.

A limited client mailbox license restricts mailbox access to the following:

- ◆ The GroupWise WebAccess client (including wireless devices)
- ◆ A GroupWise client (Windows or WebAccess) via the Proxy feature
- ◆ A GroupWise client (Windows or WebAccess) via the Busy Search feature
- ◆ A POP or IMAP client

A limited client license mailbox does not allow access through the GroupWise client for Windows (other than via Proxy or Busy Search).

You can use this option to specify the type of client license that you want applied to users' mailboxes. This enables you to support the type of GroupWise mailbox licenses you purchase. For example, if you only purchased limited client license mailboxes for users on a specific post office, you can mark all mailboxes on that post office as being limited client license mailboxes.

For information about generating an audit report that shows the type of license applied to each mailbox in a post office, see [Section 12.4, "Auditing Mailbox License Usage in the Post Office,"](#) on [page 191](#).

Client Login Mode

Choose from the following settings to determine which login modes are available to GroupWise users when using the GroupWise client for Windows. These settings apply only if you selected *Full License Mailboxes* for the client licensing.

- ◆ **Allow Use of Remote Mode:** Select this option to enable users to log in with GroupWise in Remote mode. With Remote mode, the GroupWise client uses a Remote mailbox on the user's local drive. The user must initiate a connection (modem, direct, or TCP/IP) to send or retrieve items from the GroupWise system. For more information about Remote mode, see [Section 64.1.3, "Remote Mode," on page 1057](#). By default, this option is enabled.

NOTE: Remote Mode is not available in the Cross-Platform client.

- ◆ **Allow Use of Caching Mode:** Select this option to enable users to log in with GroupWise in Caching mode. With Caching mode, the GroupWise client uses a Caching mailbox on the user's local drive (this can be the same mailbox as the Remote mailbox). The GroupWise client periodically initiates a connection with the GroupWise system to send and receive items. For more information about Caching mode, see [Section 64.1.2, "Caching Mode," on page 1055](#). By default, this option is enabled.

Select the *Force Caching Mode* option (available only if the *Allow Use of Caching Mode* option is enabled) to force users to run in Caching mode. By default, this option is disabled. Specify the number of days before Caching mode is enforced. This allows the user to continue using Online mode until the grace period has passed. The grace period begins the first time the user connects to the POA. The setting applies per user per workstation.

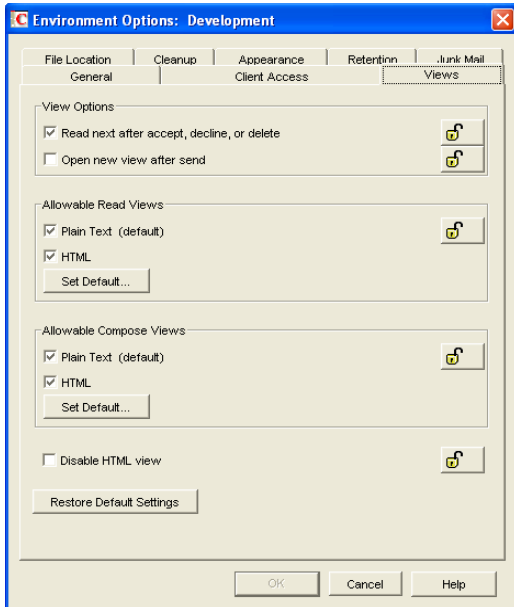
The *Force Caching Mode* setting is not enforced on a workstation that does not have enough disk space for a Caching mailbox. The amount of disk space that is required is: the size of the mailbox + 20 MB + 25% of the mailbox size.

The *Force Caching Mode* setting is also not enforced when a user connects from a shared Windows workstation or terminal server if you configure these workstations to be excluded. You do this by setting a registry key on the Windows workstation. The registry key is in HKEY_LOCAL_MACHINE. Under `Software\Novell\GroupWise\Client`, add a dword value named `No Local Store` with a value of 1. This prevents the user from creating a Caching or Remote mailbox by using the GroupWise Windows client menus. However, the user can still create a Caching or Remote mailbox by using the startup switches `/pc`, `/pr`, or `/ps`.

- ◆ **By Default, Show Login Mode Drop-Down List on Client Toolbar:** Select this option to have the Login Mode drop-down list displayed on the client's toolbar. This enables users to change the mode themselves and is necessary only if you allow multiple modes to be used. By default, this option is enabled.

Environment Options: Views

Figure 65-3 Environment Options Dialog Box with the Views Tab Open



The *Views* Environment options determine when items open, and whether or not users can read and compose messages in HTML.

View Options

Choose from the following settings to determine what occurs when the user performs an action that closes the current view.

- ◆ **Read Next after Accept, Decline, or Delete:** Select this option to have the next available received item automatically open after the user accepts, declines, or deletes an appointment, task, or note. By default, this option is enabled.
- ◆ **Open New View after Send:** Select this option to have a new send view open after a user sends a message. By default, this option is disabled.

Allowable Read Views

Choose from the following settings to determine what read views you allow the clients to use.

- ◆ **Plain Text (Default):** Select this option to allow users to read items in plain text.
- ◆ **HTML:** Select this option to allow users to read items in HTML.

Click *Set Default* to select the default read views.

Allowable Compose Views

Choose from the following settings to determine what compose views you allow the clients to use.

- ◆ **Plain Text (Default):** Select this option to allow users to compose items in plain text.
- ◆ **HTML:** Select this option to allow users to compose items in HTML.

Click *Set Default* to select the default compose views.

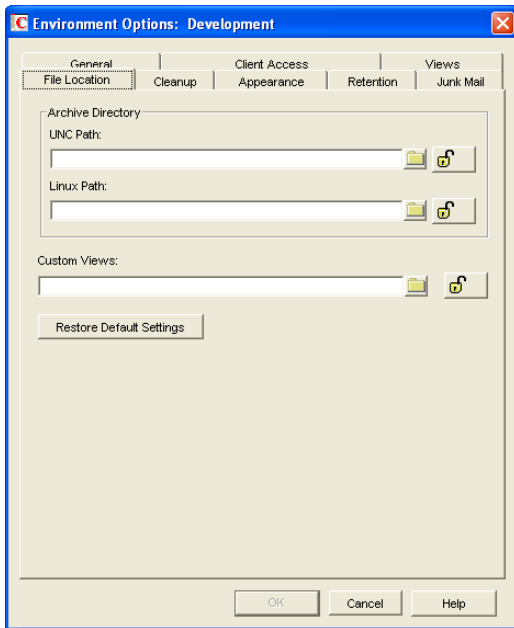
Disable HTML View

Turns off the ability to view or compose messages in HTML View.

Environment Options: File Locations

The *File Locations* options determine the locations of users' archive directories and the custom views directory.

Figure 65-4 *Environment Options Dialog Box with the File Locations Tab Open*



Archive Directory

Select the directory to be used for archiving items for both the Windows client and the Cross-Platform client. Each user must have his or her own archive directory, so this can be a local directory (for example, `c:\novell\groupwise` for the Windows client and `\home\groupwise` for the Cross-Platform client) or a personal user directory on a network server. If you select a local drive, make sure users have the directories created. If you select a network drive, make sure users have the necessary rights to access the directories.

IMPORTANT: If you want to use a network location, do not specify the same directory for users in more than one post office. The names of users' individual archive directories are based on their FIDs. FIDs are unique within a post office, but users in different post offices can have the same FID.

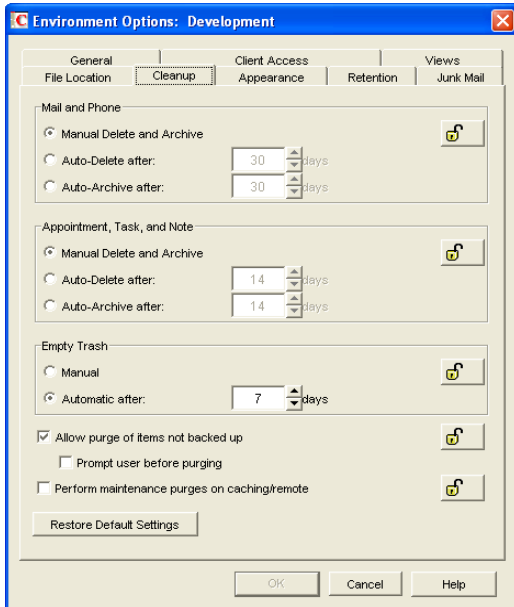
Custom Views

This option applies only if you are using custom views. Select the directory where the views are located. The GroupWise product does not include the capability to design custom views, but third-party products make use of this feature to support their specialized capabilities.

Environment Options: Cleanup

The *Cleanup* options determine the delete and archive settings for GroupWise items (mail messages, phone messages, appointments, tasks, and notes).

Figure 65-5 Environment Options Dialog Box with the Cleanup Tab Open



Mail and Phone

Choose from the following settings to determine how mail and phone messages are deleted and archived:

- ♦ **Manual Delete and Archive:** Select this option to have mail and phone messages deleted or archived only when users manually do it. This is the default setting.
- ♦ **Auto-Delete After:** Select this option to have GroupWise automatically delete mail and phone messages that are older than the specified number of days. If you use this option, you should notify users so they know they must archive items they want to save.
- ♦ **Auto-Archive After:** Select this option to have GroupWise archive mail and phone messages that are older than the specified number of days. Users must have an archive directory specified in order for items to be archived. See [“Environment Options: File Locations”](#) on page 1076 for information about setting a default archive directory location.

Appointment, Task, and Note

Choose from the following settings to determine how appointments, tasks, and notes are deleted or archived:

- ♦ **Manual Delete and Archive:** Select this option to have appointments, tasks, and notes deleted or archived only when users manually do it. This is the default setting.
- ♦ **Auto-Delete After:** Select this option to have GroupWise automatically delete appointments, tasks, or notes that are older than the specified number of days. If you use this option, you should notify users so they know they must archive items they want to save.

- ◆ **Auto-Archive After:** Select this option to have GroupWise automatically archive appointments, tasks, and notes older than the specified number of days. Users must have an archive directory specified in order for items to be archived. See “[Environment Options: File Locations](#)” on page 1076 for information about setting a default archive directory location.

Empty Trash

Deleted items are moved to the Trash folder. They can be retrieved from the Trash until it is emptied. Items in the Trash still take up disk space. Select from the following settings to determine how the Trash folder is emptied:

- ◆ **Manual:** Select this option to require the user to manually empty the Trash. This is the default setting.
- ◆ **Automatic:** Select this option to have GroupWise automatically empty items from the trash after they have been in it for the specified number of days.

Purges

- ◆ **Allow Purge of Items Not Backed Up:** Select this option to enable items that have not been backed up to be removed from the Trash. This option is enabled by default.

Select the *Prompt Before Purging* option (available only if *Allow Purge of Items Not Backed Up* is enabled) to prompt the user to confirm the purging of any files that have not been backed up.

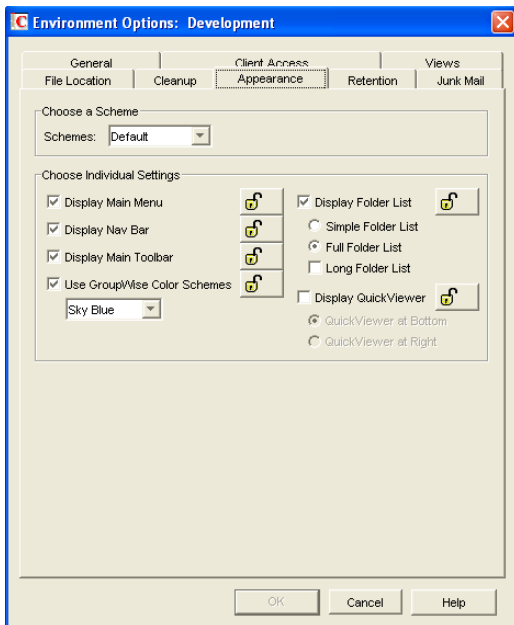
- ◆ **Perform Maintenance Purges on Caching/Remote:** On the Disk Space Management page (*Tools > GroupWise Utilities > Client Options > Send > Disk Space Management*) in ConsoleOne, you can limit the size of users’ Online mailboxes. You can now enforce the same mailbox size limits on users’ Caching and Remote mailboxes, wherever those mailboxes are located.

The size limit is applied to users’ Caching and Remote mailboxes regardless of the amount of available disk space on users’ hard drives. The size limit is applied the next time the GroupWise Windows client synchronizes with users’ Online mailboxes. Because users might lose items that they have been storing locally when the size limit is enforced, you should warn users that size limits are going to be placed on their local Caching and Remote mailboxes.

Environment Options: Appearance

The *Appearance* options determines the appearance of the GroupWise Windows client.

Figure 65-6 Environment Options Dialog Box with the Appearance Tab Open



Schemes

There are three available schemes that determine how the GroupWise Windows Client appears.

- ♦ **Default:** Displays the Main Menu, Toolbar, full Folder list, the Nav Bar, and the Sky Blue color scheme.
- ♦ **GroupWise 6.5:** Looks just like the 6.5 client. It displays the Main Menu, Toolbar, and the full Folder list.
- ♦ **Simplified:** Displays the Sky Blue color scheme, the Nav bar, and the simple Folder list.

Individual Settings

You can also control individual appearance settings for the GroupWise Windows client.

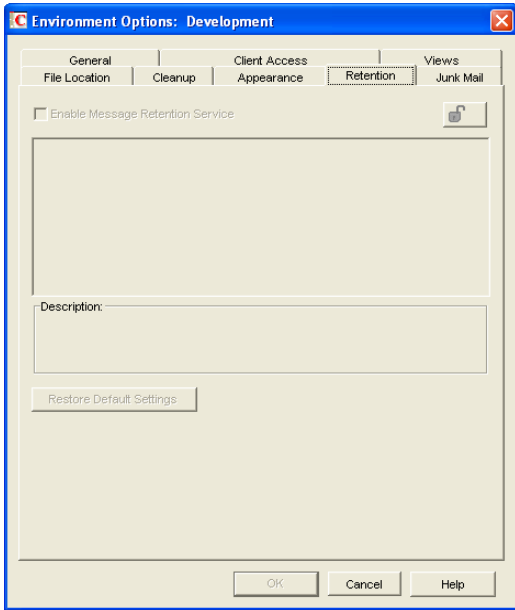
- ♦ **Display Main Menu:** Displays at the top of the window in the GroupWise client.
- ♦ **Display Nav Bar:** Displays at the top of the window in the GroupWise client.
- ♦ **Display Main Toolbar:** Displays underneath the Navigation bar in the GroupWise client.
- ♦ **GroupWise Color Scheme:** Overrides any operating system color schemes for the GroupWise client. You can select Blue, Olive Green, Silver, Sky Blue, Spring Green, or Sterling Silver.
- ♦ **Display Folder List:** Displays the Folder list on the left side of the window in the GroupWise client. You can select from a Simple Folder List or a Full Folder List. If you are using the GroupWise 6.5 Look, you can also select to view the Long Folder List.
- ♦ **Display QuickViewer:** Displays the QuickViewer in the GroupWise client. You can select to display the QuickViewer on the right side or at the bottom.

Environment Options: Retention

The *Retention* tab is displayed only if the Provides Message Retention Service setting is turned on for a trusted application. For information, see [Section 4.12, “Trusted Applications,” on page 70](#).

Message retention is configurable by administrators only, not by GroupWise users. The Retention options do not display in the GroupWise client.

Figure 65-7 Environment Options Dialog Box with the Retention Tab Open



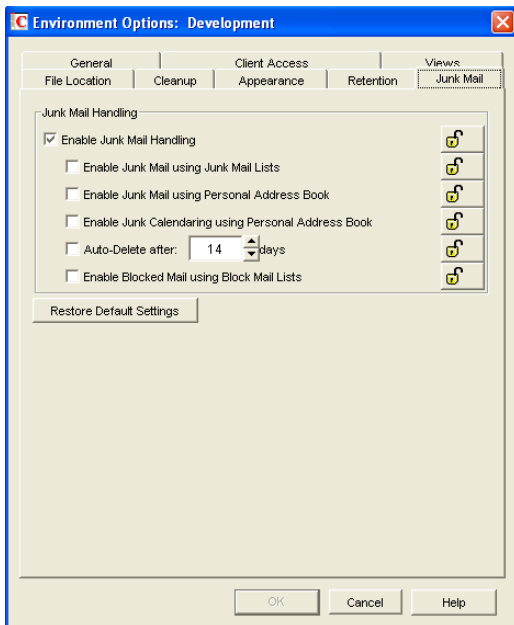
Enable Message Retention Service

Select this option to enable the Message Retention Service. If you are setting client options for a domain, all user mailboxes in the domain support message retention. Likewise, if you are setting options for a post office, all user mailboxes in the post office support message retention. After a user's mailbox is enabled for message retention, the user cannot perform any action (purging, archiving, etc.) that removes messages from the mailbox until the messages have been copied to another storage location by a trusted application that has been designed to provide the Message Retention Service.

Environment Options: Junk Mail

The Junk Mail Handling Environment options determine the junk mail handling functionality of the GroupWise client.

Figure 65-8 *Junk Mail Tab in the Environment Options Dialog Box*



Junk Mail Handling

Select *Enable Junk Mail Handling* to enable junk mail handling. This setting determines whether or not the Junk Mail Handling feature is available for a user. This setting affects both the client and the POA. Junk Mail Handling allows users to block or “junk” unwanted Internet e-mail. When this setting is disabled, the client does not display any Junk Mail Handling menus or dialog boxes, and the POA does not perform any junk mail handling for the user. When this setting is enabled, the client displays Junk Mail Handling menus and dialog boxes, and the POA performs junk mail handling if the block and junk lists are also enabled.

Enable Junk Mail Using Junk Mail Lists

Select this option to cause junking based on e-mail addresses and domain names available to users. A user can junk e-mail from a specific Internet e-mail address or from an entire Internet domain, when the e-mail addresses and Internet domains are listed in the user’s Junk List. (Initially, there are no entries in a user’s junk list.) Junked items are delivered to the Junk Mail folder in the user’s Mailbox.

When this setting is enabled or disabled and not locked, the user’s initial setting to use the Junk List is enabled or disabled. Users can change the setting. When the setting is enabled and locked, a user’s Enable Junk List setting is enabled and cannot be disabled. When the setting is disabled and locked, the Junk List is unavailable to the user. Client menu options and dialog boxes involving the Junk List are not displayed.

Enable Junk Mail Using Personal Address Book

Select this option to cause junking based on personal address book entries available to users. A user can junk e-mail from all users whose addresses are not in any personal address books (including Frequent Contacts) without building a Junk List.

When this setting is enabled or disabled and not locked, the user’s initial setting to use personal address books is enabled or disabled. Users can change the setting. When the setting is enabled and

locked, a user's *Enable Junk Mail Using Personal Address Book* setting is enabled and cannot be disabled. When the setting is disabled and locked, this option is unavailable to the user.

Auto-Delete After

Select this option and specify the number of days after which you want junked items to be automatically deleted from users' mailboxes. The default is 14 days.

When this setting is enabled or disabled and not locked, the user's initial setting to delete junked items is enabled or disabled. Users can change the setting. When the setting is enabled and locked, a user's *Automatically Delete Items* setting is enabled and cannot be disabled. When the setting is disabled and locked, this option is unavailable to the user.

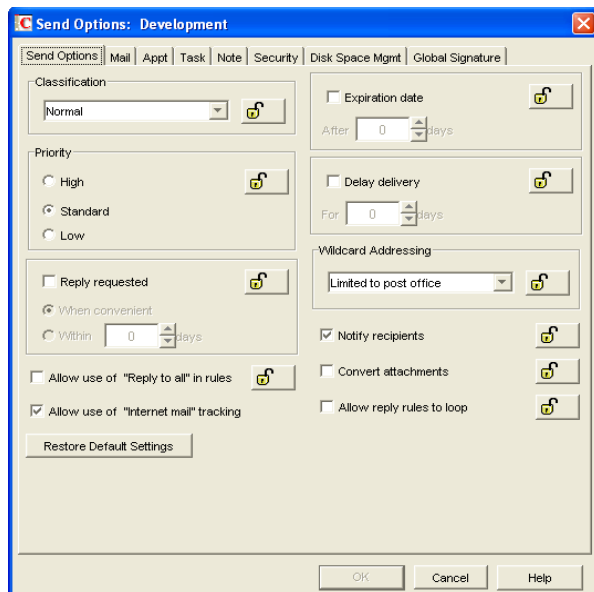
Enable Blocked Mail Using Block Mail Lists

Select this option to make blocking available to users. A user can block e-mail from an Internet e-mail address or Internet domain, when blocked e-mail addresses and Internet domains are listed in the user's Block List. (Initially, there are no entries in a user's Block List.) Blocked items are blocked when the POA processes delivery to the user's mailbox, and the items are never delivered to the user's mailbox. When the POA log uses verbose mode, the log displays information about blocked items.

When this setting is enabled or disabled and not locked, the user's initial setting to use the Block List is enabled or disabled. Users can change the setting. When the setting is enabled and locked, a user's Block List setting is enabled and cannot be disabled. When the setting is disabled and locked, blocking is unavailable to the user. Client menu options and dialog boxes involving the Block List are not displayed.

65.2.2 Modifying Send Options

- 1 If the Send Options dialog box is not displayed, follow the instructions in [Section 65, "Setting Defaults for the GroupWise Client Options,"](#) on page 1065 to display the dialog box.



- 2 Click the tab that contains the options you want to change. Refer to the following sections for information about options:

“Send Options: Send Options” on page 1083

“Send Options: Mail” on page 1085

“Send Options: Appointment” on page 1086

“Send Options: Task” on page 1087

“Send Options: Note” on page 1088

“Send Options: Security” on page 1089

“Send Options: Disk Space Management” on page 1091

“Send Options: Global Signature” on page 1092

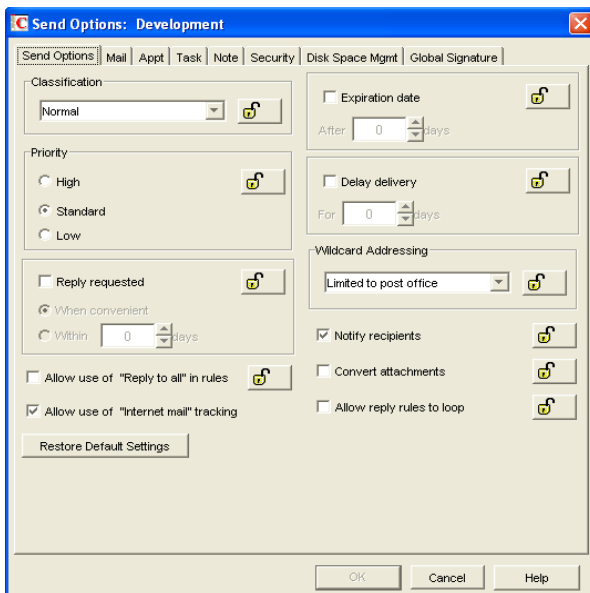
NOTE: To see which Send options are recognized by the Cross-Platform client, refer to the [client options table](#) in Section 65.1, “Client Options Summary,” on page 1065.

- 3 If you want to prevent users from changing an option’s setting, click the lock button next to it. After you click it, the lock button indicates whether the setting is locked at the domain level, the post office level, or the user level.
- 4 If you want to return all the options on a tab to their default settings, click *Restore Default Settings*.
- 5 When finished, click *OK* to save your changes.

Send Options: Send Options

The *Send Options* determine general settings that apply to all GroupWise item types (mail messages, phone messages, appointments, tasks, and notes).

Figure 65-9 *Send Options Dialog Box with the Send Options Tab Open*



Classification

Select the default for the security classification label at the top of the message box. The classifications do not provide any encryption or additional security. They are meant to alert the recipient to the relative sensitivity of the item. The options are *Normal*, *Proprietary*, *Confidential*, *Secret*, *Top Secret*, and *For Your Eyes Only*. The default is *Normal*.

Priority

Select *High*, *Standard*, or *Low* as the default item priority. Priority determines which post office directory an item is placed in. This, in turn, determines how quickly items are delivered. High priority items are queued ahead of normal or low priority items.

Reply Requested

Select the *Reply Requested* option to have items always include a reply request. By default, this option is disabled. If you enable the option, select whether the recipient is asked to reply when it is convenient or within a specific number of days.

Allow Use of Reply to All in Rules

Select this option to enable users to use the *Reply to All* action when creating rules. By default, this option is disabled, which means that only the *Reply to Sender* action is available.

Allow Use of Internet Mail Tracking

Select this option to allow users' GroupWise clients to automatically embed information in Internet-bound items. The embedded information instructs the receiving system to send back a delivery notification message (if it is supported). By default, this option is enabled.

To make Internet Status Tracking work, users must also turn on the setting in the GroupWise client (*Tools > Options > Send Options > Mail > Enable Delivery Confirmation*). By default, the *Enable Delivery Confirmation* is turned off in the GroupWise client.

Expiration Date

Select this option to have unopened messages expire after the specified number of days. By default, this option is disabled.

Delay Delivery

Select this option to delay the delivery of messages for the specified number of days. For example, if you specify 3 days, a message is not delivered until 3 days after the day it is sent. Messages are delivered at 12:01 a.m. of the appropriate day. By default, this option is disabled.

Wildcard Addressing

Wildcard addressing enables a user to send an item to all users in a post office, domain, GroupWise system, or connected GroupWise system by inserting asterisks (*) as wildcards in e-mail addresses.

- ◆ **Not Allowed:** Select this option to disable wildcard addressing.
- ◆ **Limited to Post Office (Default):** Select this option to limit wildcard addressing to the user's post office. This means that a user can send an item to all users on the same post office by entering * in the item's address field.

- ♦ **Limited to Domain:** Select this option to limit wildcard addressing to the user's domain. This means that a user can send an item to all users in the domain by entering *.* in the item's address field. A user can also send an item to all users on another post office in the domain by entering *.post_office_name in the item's address field.
- ♦ **Limited to System:** Select this option to limit wildcard addressing to the user's GroupWise system. This means that a user can send an item to all users in the GroupWise system by entering *.*.* in the item's address field. A user can also send an item to all users in another domain by entering *.domain_name or to all users in another post office by entering *.post_office_name.
- ♦ **Unlimited:** Select this option to allow unlimited use of wildcard addressing. This means that a user can send an item to all users in another GroupWise system by entering *.post_office_name.domain_name or *.domain_name in the item's address field.

Notify Recipients

Select this option to have recipients notified when they receive an item, if they are using GroupWise Notify. By default, this option is enabled.

Convert Attachments

Select this option to allow conversion of attachments in items sent to non-GroupWise e-mail systems through a GroupWise gateway.

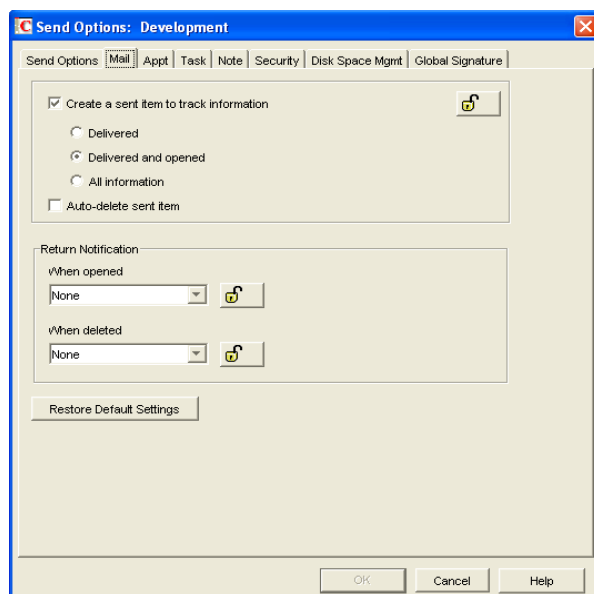
Allow Reply Rules to Loop

By default, GroupWise does not allow a rule-generated reply to be replied to by another rule-generated reply. This situation, referred to as looping, can quickly increase message traffic. To allow reply rules to loop, select this option.

Send Options: Mail

The *Mail* options apply to mail and phone messages only.

Figure 65-10 Send Options Dialog Box with the Mail Tab Open



Create a Sent Item to Track Information

By default, items the user sends are inserted in the user's Sent Items folder. Deselect this option if you do not want the items placed there. If items are not placed in the Sent Items folder, users cannot check the delivery status of the item. The following options are available only if this option is selected.

- ◆ **Delivered:** Select this option to track delivered status only. The user can open the Properties window of the message to view the status.
- ◆ **Delivered and Opened (Default):** Select this option to track delivered and opened status only. The user can open the Properties window of the sent message to view the status.
- ◆ **All Information:** Select this option to track all status information (delivered, opened, deleted, emptied). The user can open the Properties window of the message to view the status.
- ◆ **Auto-Delete Sent Item:** Select this option to automatically delete messages from the user's Mailbox after all the recipients have deleted the messages and emptied them from the Trash.

Return Notification

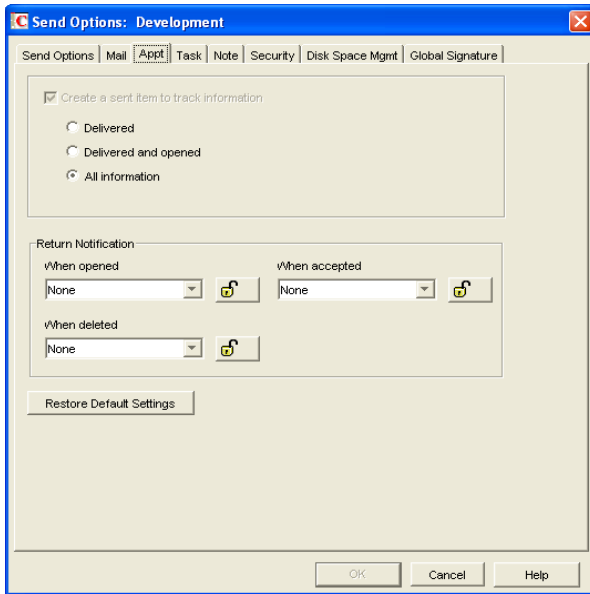
In addition to status tracking information, the user can receive notification when a message is opened or deleted. Choose from the following notification options:

- ◆ **None (Default):** The user does not receive notification.
- ◆ **Mail Receipt:** The user receives a mail message stating that the recipient opened or deleted the message.
- ◆ **Notify:** The user receives notification through GroupWise Notify when the recipient opens or deletes the message.
- ◆ **Notify and Mail:** The user will receive notification through GroupWise Notify and a mail message.

Send Options: Appointment

The *Appointment* options apply to appointments only.

Figure 65-11 Send Options Dialog Box with the Appt Tab Open



Create a Sent Item to Track Information

The setting for this option is inherited from the setting on the *Mail* tab; it can only be enabled or disabled on the *Mail* tab. If the option is enabled, you can choose from the following status tracking levels:

- ◆ **Delivered:** Select this option to track delivered status only. The user can open the Properties window of the appointment to view the status.
- ◆ **Delivered and Opened:** Select this option to track delivered and opened status only. The user can open the Properties window of the appointment to view the status.
- ◆ **All Information (Default):** Select this option to track all status information (delivered, opened, deleted, emptied). The user can open the Properties window of the appointment to view the status.

Return Notification

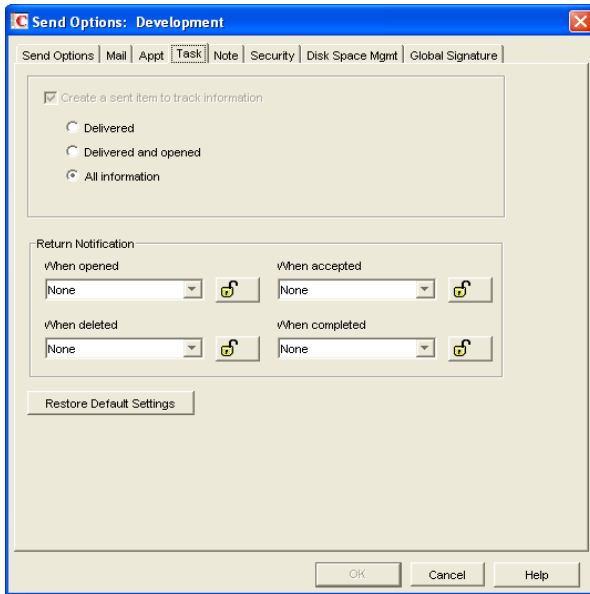
In addition to status tracking information, the user can receive notification when an appointment is opened, accepted, or deleted. Choose from the following notification options:

- ◆ **None (Default):** The user does not receive notification.
- ◆ **Mail Receipt:** The user receives a mail message stating that the recipient opened, accepted, or deleted the appointment.
- ◆ **Notify:** The user receives notification through GroupWise Notify when the recipient opens, accepts, or deletes the appointment.
- ◆ **Notify and Mail:** The user receives notification through GroupWise Notify and a mail message.

Send Options: Task

The *Task* options apply to tasks only.

Figure 65-12 *Send Options Dialog Box with the Task Tab Open*



Create a Sent Item to Track Information

The setting for this option is inherited from the setting on the *Mail* tab; it can only be enabled or disabled on the *Mail* tab. If the option is enabled, you can choose from the following status tracking levels:

- ◆ **Delivered:** Select this option to track delivered status only. The user can open the Properties window of the task to view the status.
- ◆ **Delivered and Opened:** Select this option to track delivered and opened status only. The user can open the Properties window of the task to view the status.
- ◆ **All Information (Default):** Select this option to track all status information (delivered, opened, deleted, emptied). The user can open the Properties window of the task to view the status.

Return Notification

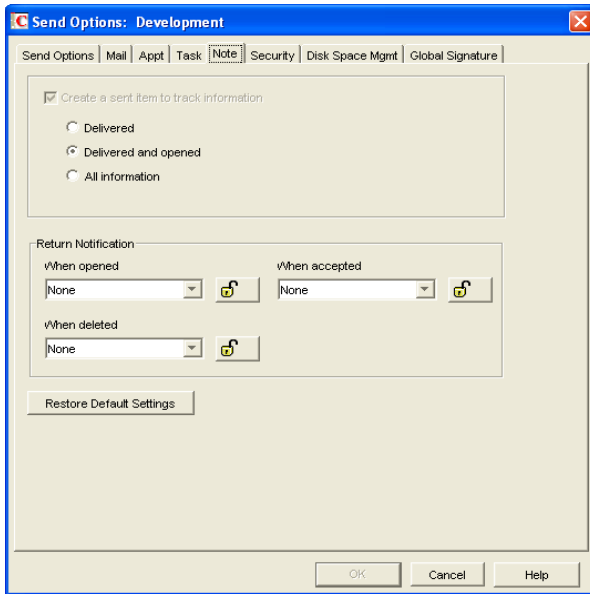
In addition to status tracking information, the user can receive notification when a task is opened, accepted, completed, or deleted. Choose from the following notification options:

- ◆ **None (Default):** The user does not receive notification.
- ◆ **Mail Receipt:** The user receives a mail message stating that the recipient opened, accepted, completed, or deleted the task.
- ◆ **Notify:** The user receives notification through GroupWise Notify when the recipient opens, accepts, completes, or deletes the task.
- ◆ **Notify and Mail:** The user receives notification through GroupWise Notify and a mail message.

Send Options: Note

The *Note* options apply to notes only.

Figure 65-13 Send Options Dialog Box with the Notes Tab Open



Create a Sent Item to Track Information

The setting for this option is inherited from the setting on the *Mail* tab; it can only be enabled or disabled on the *Mail* tab. If the option is enabled, you can choose from the following status tracking levels:

- ◆ **Delivered:** Select this option to track delivered status only. The user can open the Properties window of the note to view the status.
- ◆ **Delivered and Opened (Default):** Select this option to track delivered and opened status only. The user can open the Properties window of the note to view the status.
- ◆ **All Information:** Select this option to track all status information (delivered, opened, deleted, emptied). The user can open the Properties window of the note to view the status.

Return Notification

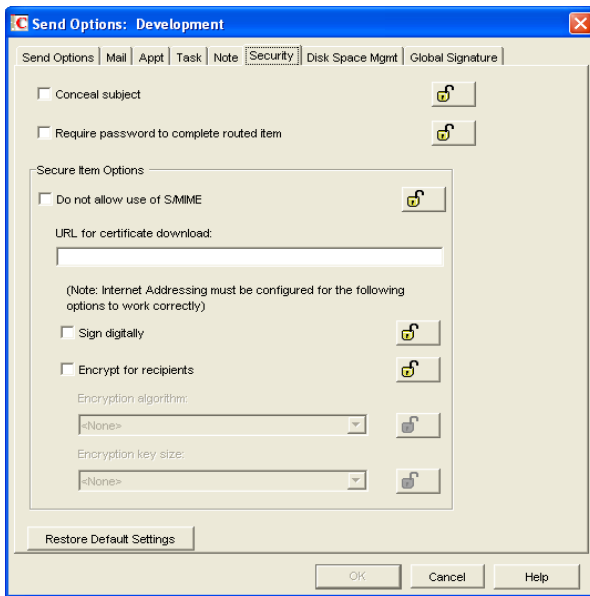
In addition to status tracking information, the user can receive notification when a note is opened or deleted. Choose from the following notification options:

- ◆ **None (Default):** The user does not receive notification.
- ◆ **Mail Receipt:** The user receives a mail message stating that the recipient opened or deleted the note.
- ◆ **Notify:** The user receives notification through GroupWise Notify when the recipient opens or deletes the note.
- ◆ **Notify and Mail:** The user receives notification through GroupWise Notify and a mail message.

Send Options: Security

The *Security* options apply to all GroupWise item types (mail messages, phone messages, appointments, tasks, and notes).

Figure 65-14 Send Options Dialog Box with the Security Tab Open



Conceal Subject

Select this option to conceal the item's subject so the notification that appears on the recipient's screen does not include the subject. The subject of the item is also concealed in the recipient's mailbox and the sender's Sent Items folder. It is visible only when the item is being read.

Require Password to Complete Routed Item

Select this option to require a user to enter a password before completing a routed item.

Secure Items Options

If users have installed security providers on their workstations, select the options you want them to use.

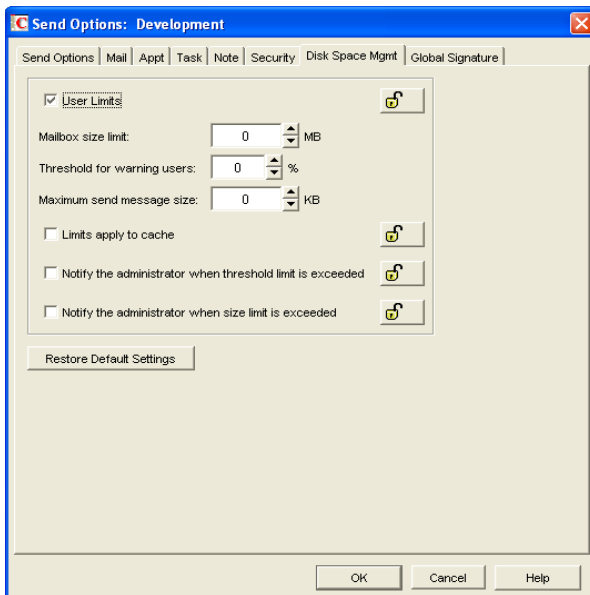
- ◆ **Do Not Allow Use of S/MIME:** Select this option to disable S/MIME functionality. This disables the *Encrypt* and *Digitally Sign* buttons (and other related S/MIME functionality) in the GroupWise client. By default, this option is enabled. When it is enabled, you can modify the rest of the options in the dialog box.
- ◆ **URL for Certificate Download:** Specify the Internet address of your preferred certification authority. If not otherwise changed in this field, the GroupWise client accesses <http://www.novell.com/groupwise/certified.html>, which lists several common certification authorities.
- ◆ **Sign Digitally:** Select this option to enable users to add a digital signature to their outgoing messages. Recipients of a digitally-signed item who have S/MIME-enabled e-mail products are able to verify that the item is actually from the sender. This setting is not a useful security measure unless you lock it as the default.
- ◆ **Encrypt for Recipients:** Select this option to enable users to encrypt an outgoing item so they can ensure that the intended recipients who have an S/MIME-enabled e-mail product are the only individuals who can read the item. This setting is not a useful security measure unless you lock it as the default.

If you enable the *Encrypt for Recipients* options, you can set the encryption algorithm and key size. The available algorithm methods (RC2, RC4, DES, 3DES) are trusted algorithms that encrypt or transform data to mask the original content. The key size sets the default size (in bits) of the encryption key that is used with the algorithm you select. These settings are not useful security measures unless you lock them.

Send Options: Disk Space Management

The *Disk Space Management* options let you enforce disk space limitations for users on a post office.

Figure 65-15 *Send Options Dialog Box with the Disk Space Management Tab Open*



User Limits

Select this option if you want to impose limits on the size of users' mailboxes or the size of messages they can send. By default, this option is disabled. If you enable it, you can modify the following options:

- ◆ **Mailbox Size Limit:** Specify the maximum amount of post office disk space available to users for storing message and attachment files. The setting uses logical disk space because attachments are shared by all recipient users on the same post office. Messages in shared folders are counted as disk space only for the owner of the shared folder. If you do not want to limit the mailbox size, set the value to zero (0).

If users meet or exceed their mailbox size limits, they cannot send items until their mailboxes are under the size limit. Users can reduce the size of their mailboxes by deleting or archiving items.

- ◆ **Threshold for Warning Users:** Select the mailbox capacity (as a percentage) that must be reached before the user is warned that his or her mailbox is reaching its limit. For example, if the mailbox size limit is 200 MB and the threshold is set at 75%, users receive warnings when their mailboxes reach 150 MB. Set the value to 0 or 100 if you do not want users to receive a warning.

- ♦ **Maximum Send Message Size:** Specify the maximum size of a message (in kilobytes) that a user can send using the GroupWise client. If the user sends an item that exceeds this size, a message notifies the user that the item is too large to send.

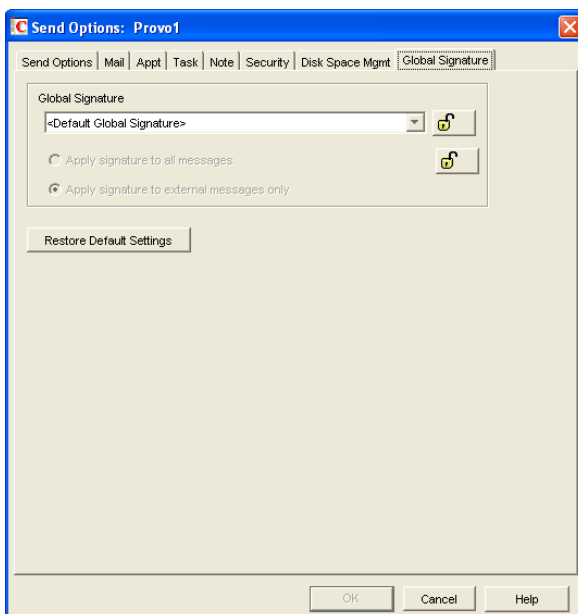
You can also set message size limits at the post office level through POA configuration, at the domain level through MTA configuration, and at the GroupWise system level through Internet Agent configuration, as described in [Section 12.3.4, “Restricting the Size of Messages That Users Can Send,”](#) on page 185.

- ♦ **Limits Apply to Cache:** Use the same disk space limits for users’ Caching mailboxes on local workstations as you are using for their Online mailboxes in the post office. If you impose this limit on users who have existing Caching mailboxes, their Caching mailboxes might be reduced in size in order to meet the new disk space limit. Such users should be warned in advance so that they can back up their Caching mailboxes before the size reduction takes place. Otherwise, user could lose messages that they want to keep.
- ♦ **Notify the Administrator When Threshold Limit Is Exceeded:** Select this option so that the administrator is notified along with the user when the user’s mailbox exceeds the size established in the *Threshold for Warning Users* field. The administrator who receives the notification must be defined on the Identification page of the Domain object.
- ♦ **Notify the Administrator When Size Limit Is Exceeded:** Select this option so that the administrator is notified when the user’s mailbox exceeds the size established in the *Mailbox Size Limit* field. The administrator who receives the notification must be defined on the Identification page of the Domain object.

Send Options: Global Signature

The *Global Signature* option lets you set the global signature. To set options at the domain level, select a domain. To set options at the post office level, select a post office. To set options for individual users, select one or more users.

Figure 65-16 *Send Options Dialog Box with the Global Signature Tab Open*



Global Signature

- 1 Select a global signature to append to users' messages.

When enabled, global signatures are automatically appended to every message that is sent by the users. For more information, see [Section 4.14, "Global Signatures," on page 72](#).

- 2 Select *Apply the signature to all messages* to add the signature to all internal or external messages.

or

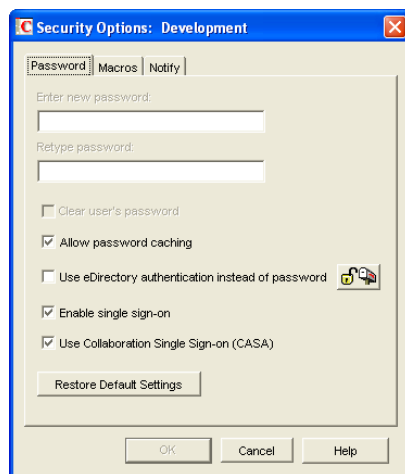
Select *Apply signature to external messages only* to apply the signature to messages that are sent through the GroupWise Internet Agent.

If you select *Default Global Signature*, the default signature that is used by the GroupWise Internet Agent is applied. If you select *None*, then no signature is applied.

NOTE: All *Global Signature* options pertain only to the Windows client.

65.2.3 Modifying Security Options

- 1 If the Security Options dialog box is not displayed, follow the instructions in [Section 65, "Setting Defaults for the GroupWise Client Options," on page 1065](#) to display the dialog box.



- 2 Click the tab that contains the options you want to change. Refer to the following sections for information about options:

["Security Options: Password" on page 1094](#)

["Security Options: Macros" on page 1095](#)

["Security Options: Notify" on page 1096](#)

NOTE: To see which Security options are recognized by the Cross-Platform client, refer to the [client options table](#) in [Section 65.1, "Client Options Summary," on page 1065](#).

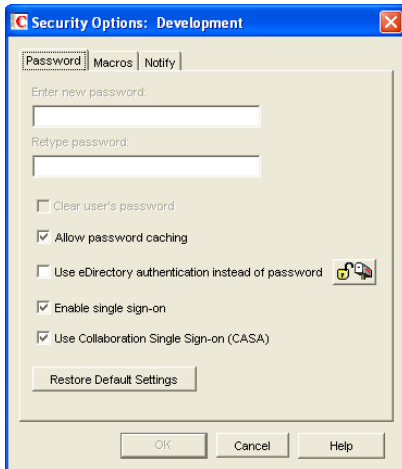
- 3 If you want to prevent users from changing an option's setting, click the lock button next to it. After you click it, the lock button indicates whether the setting is locked at the domain level, the post office level, or the user level.

- 4 If you want to return all the options on a tab to their default settings, click *Restore Default Settings*.
- 5 When finished, click *OK* to save your changes.

Security Options: Password

The *Password* options let you reset a user's password and enable various methods by which a user can set up the GroupWise client so that he or she doesn't have to enter a password at startup.

Figure 65-17 *Security Options Dialog Box with the Password Tab Open*



For background information about passwords, see [Chapter 70, “GroupWise Passwords,”](#) on [page 1133](#).

Enter New Password

This option is available only when setting client options for an individual user. You can use this option to set or reset a user's password. You should advise the user to change the password as soon as possible.

Retype Password

This option is available only when setting client options for an individual user. If you enter a new password, verify it by retyping it in this field.

Clear User Password

This option is available only when setting client options for an individual user. Select the option to clear an existing password without assigning a new password.

Allow Password Caching

Select this option to allow users to enable the *Remember My Password* option under *Security* options in the GroupWise client. The *Remember My Password* option stores the user's password in the workstation's Windows password list so that the user does not need to enter the password when starting GroupWise. This option is enabled by default.

The *Remember My Password* option applies to Windows 95/98/ME only. It is not displayed to users running the GroupWise client on Windows 2000/XP/2003. Because Windows 95/98/NT are not supported platforms for the latest client release, this option is for older versions of the client.

Allow eDirectory Authentication Instead of Password

Select this option to allow users to select the No Password Required with eDirectory option under Security options in the GroupWise client. When this option is selected in the client, the user can access his or her mailbox without requiring a password if he or she is already logged in to Novell eDirectory. Mailbox access is granted based on eDirectory authentication, not on password information.

NOTE: In versions of GroupWise prior to the GroupWise 5.5 Enhancement Pack, this option was called *Allow NDS Single Sign-on*. The option name has been changed to avoid confusion with the Novell Single Sign-on product.

Enable Single Sign-On

Select this option to give users the *Use Single Sign-on* option under *Security Options* in the GroupWise client. This option lets the user access his or her mailbox without reentering the password. After a user selects *Use Single Sign-On* in the GroupWise client, the GroupWise password is stored in eDirectory for the currently logged-in user.

IMPORTANT: Novell Single Sign-on must be installed on the user's workstation in order for this option to take effect.

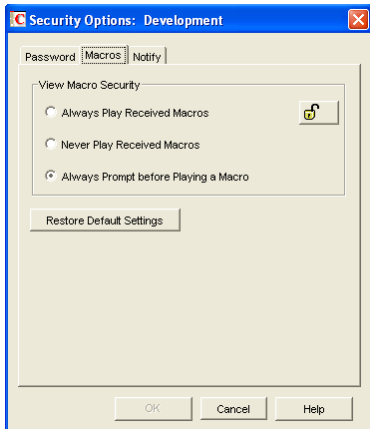
Use Collaboration Single Sign-on (CASA)

Select this option to give users the *Use Collaboration Single Sign-on (CASA)* option under *Security Options* in the GroupWise Windows client. This option lets the user access his or her mailbox without reentering the password if the *Collaboration Single Sign-on (CASA)* software is installed. After a user selects *Use Collaboration Single Sign-On (CASA)* in the GroupWise client and if the CASA client is installed, the GroupWise password is stored for the currently logged-in user.

Security Options: Macros

The *Macros* option determines how GroupWise handles macros that are included in received messages.

Figure 65-18 Security Options Dialog Box with the Macros Tab Open



View Macro Security

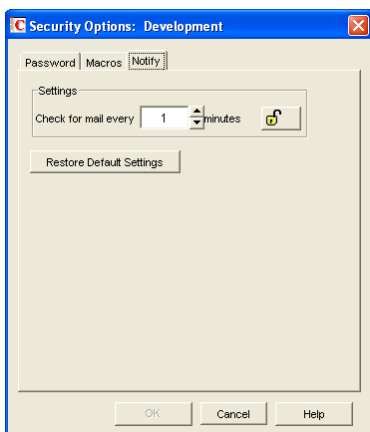
Choose from the following settings to determine the level of macro security:

- ◆ **Always Play Received Macros:** Select this option to play attached macros when the message is opened.
- ◆ **Never Play Received Macros:** Select this option to ignore attached macros. Macros do not play.
- ◆ **Always Prompt Before Playing a Macro (Default):** Select this option to have the user prompted to play the macro.

Security Options: Notify

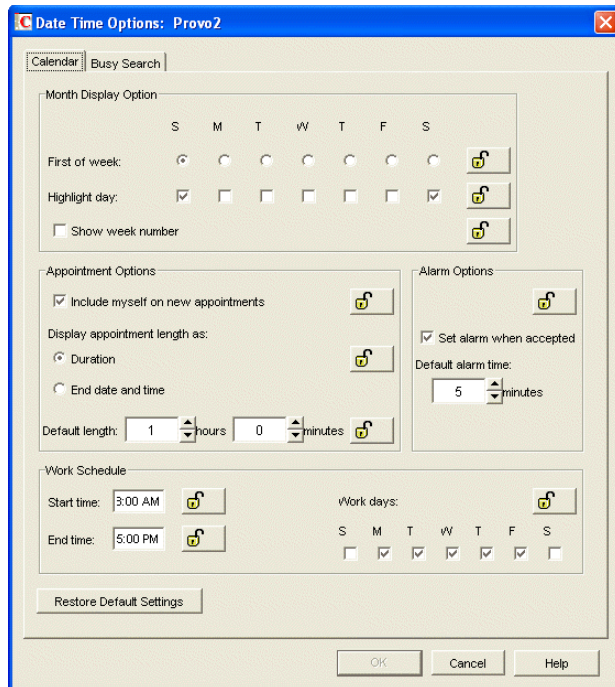
The *Notify* option determines how often GroupWise Notify checks a user's mailbox for newly received items. If new items are detected, the user is notified. The default is every minute.

Figure 65-19 Security Options Dialog Box with the Notify Tab Open



65.2.4 Modifying Date and Time Options

- 1 If the Date and Time Options dialog box is not displayed, follow the instructions in [Section 65](#), “Setting Defaults for the GroupWise Client Options,” on page 1065 to display the dialog box.



- 2 Click the tab that contains the options you want to change. Refer to the following sections for information about options:

“Date and Time Options: Calendar” on page 1097

“Date and Time Options: Busy Search” on page 1099

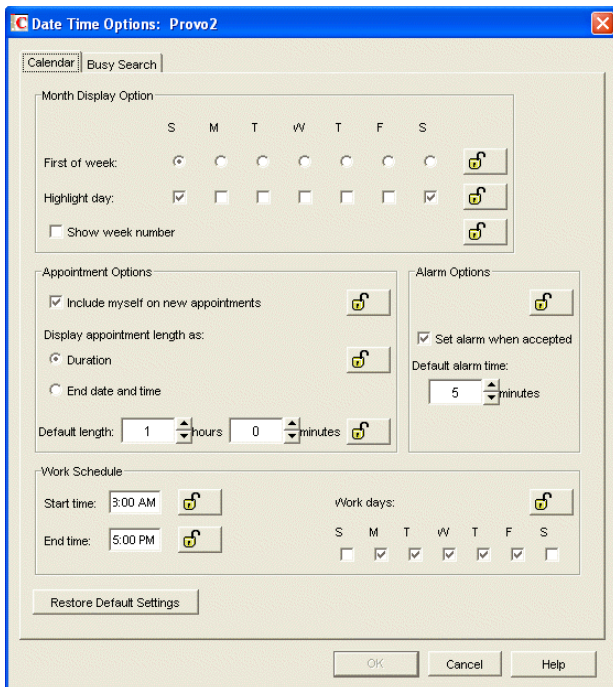
NOTE: The Date and Time options are not currently recognized by the Cross-Platform client.

- 3 If you want to prevent users from changing an option’s setting, click the lock button next to it. After you click it, the lock button indicates whether the setting is locked at the domain level, the post office level, or the user level.
- 4 If you want to return all the options on a tab to their default settings, click *Restore Default Settings*.
- 5 When finished, click *OK* to save your changes.

Date and Time Options: Calendar

The *Calendar* options determine basic settings for the GroupWise Calendar.

Figure 65-20 Date and Time Options Dialog Box with the Calendar Tab Open



Month Display Option

Select from the following options to determine how the month calendar is displayed:

- ◆ **First of Week:** Select the day of the week that you want to display as the first day on the calendar.
- ◆ **Highlight Day:** Select any days you want highlighted, such as weekends and holidays.
- ◆ **Show Week Number:** Select this option to display the week number (1 through 52) at the beginning of the calendar week.

Appointment Options

Select from the following options to determine how appointments are handled:

- ◆ **Include Myself on New Appointments:** Select this option to have the sender automatically included in the appointment's To: list. This option is enabled by default.
- ◆ **Display Appointment Length As:** When creating an appointment, the sender must specify the appointment's length. You can use this option to determine whether the sender enters a duration for the appointment or an end time for the appointment. Select the *Duration* setting to have appointments display a *Duration* field that the sender must fill in (for example, 30 minutes, 1 hour, or 10 hours). Select the *End Date and Time* setting to have appointments display *End Date and Time* fields that the sender must fill in (for example, June 3, 2007 and 10:00 a.m.). The default setting is *Duration*.
- ◆ **Default Length:** Select the default length for appointments. Users can change the length. If the appointment's length is displayed as a duration, the duration defaults to this length. If it is displayed as an end date and time, the end time defaults to the start time plus the default length (for example, if the start time is 9:00 a.m. and the default length is 1 hour, the end time defaults to 10:00 a.m.).

Alarm Options

Users can set appointment alarms so that they are notified prior to an appointment time. Select from the following options to determine the default settings for an alarms:

- ♦ **Set Alarm When Accepted:** Select this option to have an alarm automatically set when the user accepts an appointment. By default, this option is enabled.
- ♦ **Default Alarm Time:** Select the number of minutes before an appointment to notify the user. The default is 5 minutes.

Work Schedule

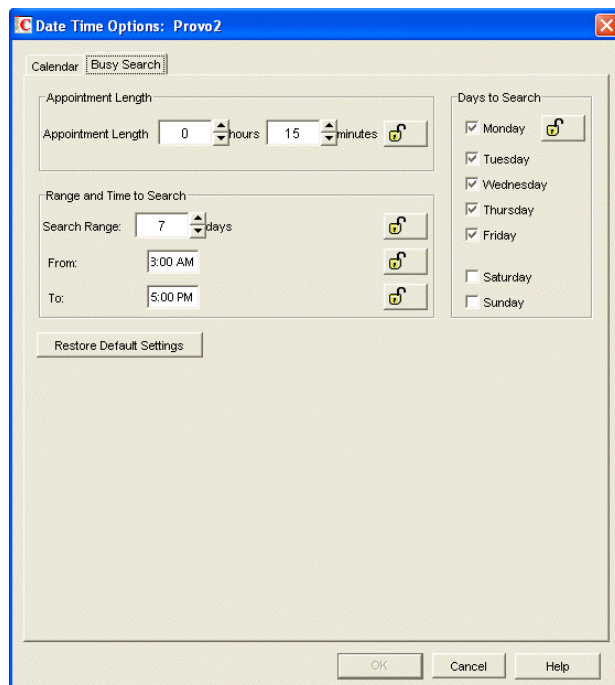
The work schedule determines the user's normal work days and hours. In the calendar and during busy searches, any days or hours outside of the work schedule are represented by gray squares (Out of Office). Users can still be scheduled for appointments during non-work hours.

- ♦ **Start Time:** Select the daily start time. The default is 8:00 a.m.
- ♦ **End Time:** Select the daily end time. The default is 5:00 p.m.
- ♦ **Work Days:** Select the work days. The start time and end time are applied to each work day.

Date and Time Options: Busy Search

The *Busy Search* options determine the amount of free time required for the appointment and the range of dates to search.

Figure 65-21 Date and Time Options Dialog Box with the Busy Search Tab Open



Appointment Length

Set the default appointment length to search. You can set the length in 15-minute increments. The default is 15 minutes. This setting is used only when the user does a busy search through the *Busy*

Search option on the *Tools* menu. Otherwise, the default appointment length defined on the *Calendar* tab is used (see “[Date and Time Options: Calendar](#)” on page 1097).

Range and Time to Search

Specify the number of days to include in the search, then set the daily start and end times for the search.

Days to Search

Select the days to search. By default, the typical work days (Monday through Friday) are selected.

65.3 Resetting Client Options to Default Settings

You can reset client options to the defaults for one or more users using Mailbox/Library Maintenance.

- 1 In ConsoleOne, select one or more User objects (or GroupWise External Entity objects).
- 2 Click *Tools > GroupWise Utilities > Mailbox/Library Maintenance*.
- 3 In the GroupWise Objects list, select *Users/Resources*.
- 4 In the *Actions* list, select *Reset Client Options*, then click *Run*.

You can distribute the GroupWise® client software in various ways:

- ◆ [Section 66.1, “Using GroupWise AutoUpdate and SetupIP to Distribute the GroupWise Windows Client,” on page 1101](#)
- ◆ [Section 66.2, “Using ZENworks Desktop Management to Distribute the GroupWise Windows Client,” on page 1114](#)
- ◆ [Section 66.3, “Using Novell ZENworks Linux Management to Distribute the GroupWise Cross-Platform Client,” on page 1119](#)

66.1 Using GroupWise AutoUpdate and SetupIP to Distribute the GroupWise Windows Client

During installation and subsequent updates, the GroupWise® 7.x Windows client Setup program (`setup.exe`) by default requires user intervention at the workstation in order to install the client software. However, by using a setup configuration file (`setup.cfg`), you can simplify or eliminate the user responses during installation, and you can cause installations and updates to occur at specific times.

With AutoUpdate enabled, users are prompted to update their Windows client software, but they are not required to update and they can turn off the update prompt. If you want, you can force users to update their client software immediately, or you can allow them a specified number of grace logins to their existing version before you force them to update. This allows you to maintain current versions of the Windows client software on the network.

By default, AutoUpdate requires that users workstations have a mapped drive to the `client\win32` directory in the software distribution directory. However, with SetupIP enabled, users can install the Windows client software by way of a TCP/IP connection to a Web server and do not required a mapped drive

- ◆ [Section 66.1.1, “Preparing to Use AutoUpdate,” on page 1102](#)
- ◆ [Section 66.1.2, “Using the Setup Configuration File,” on page 1105](#)
- ◆ [Section 66.1.3, “Modifying the Setup Configuration File,” on page 1105](#)
- ◆ [Section 66.1.4, “Adding LDAP Directory Service Accounts,” on page 1109](#)
- ◆ [Section 66.1.5, “Testing Your AutoUpdate Configuration,” on page 1110](#)
- ◆ [Section 66.1.6, “Enabling AutoUpdate,” on page 1111](#)
- ◆ [Section 66.1.7, “Modifying the addon.cfg File,” on page 1112](#)
- ◆ [Section 66.1.8, “Error Log File,” on page 1113](#)

NOTE: This section does not apply to the Cross-Platform client.

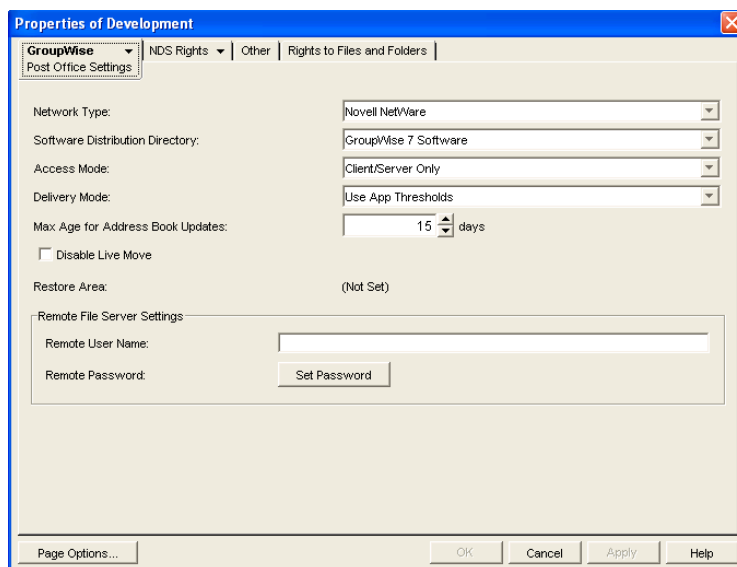
66.1.1 Preparing to Use AutoUpdate

Your preparation for implementing AutoUpdate depends on whether users install the Windows client software from a mapped drive or a TCP/IP connection.

- ♦ “Verifying the Windows Client Software in the Software Distribution Directory” on page 1102
- ♦ “Accessing the Windows Client Software from a Mapped Drive” on page 1102
- ♦ “Accessing the Windows Client Software from a TCP/IP Connection to a Web Server” on page 1103

Verifying the Windows Client Software in the Software Distribution Directory

In order for AutoUpdate to function correctly, the Windows client software must be available in the `client` subdirectory of the software distribution directory that is assigned to each post office on the Post Office Settings property page of each Post Office object.



During the initial installation of the GroupWise Administration component, the Windows client files are copied to the software distribution directory on one server. For example, if you accepted the default `z:\grpwise\software` as your target, the Windows client software was copied to `z:\grpwise\software\client\win32`.

Depending on the size of your GroupWise system, you might have created additional software distribution directories after your initial installation, as described in [Section 4.9, “Software Directory Management,”](#) on page 65. Before you enable AutoUpdate, ensure that all software distribution directories contain the Windows client software that you want to distribute to users.

Accessing the Windows Client Software from a Mapped Drive

If you want to use AutoUpdate to install the Windows client software from a software distribution directory on a mapped drive, users must be given Read and File Scan rights to the following directories:

`software_distribution_directory\client`
`software_distribution_directory\client\win32`

In addition, when AutoUpdate runs, users' workstations must have a drive mapped to the following directory:

software_distribution_directory\client\win32

Skip to [Section 66.1.2, "Using the Setup Configuration File,"](#) on page 1105.

Accessing the Windows Client Software from a TCP/IP Connection to a Web Server

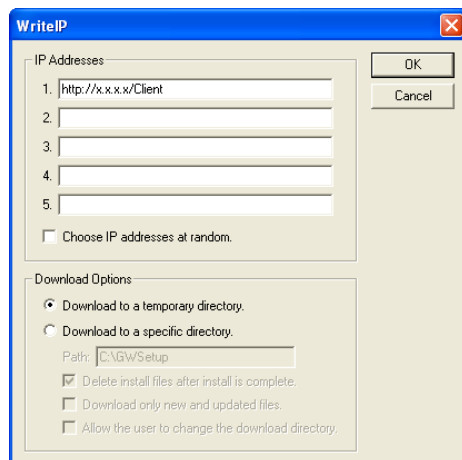
If you want to enable SetupIP, so that users do not need a mapped drive to the software distribution directory, you must configure your Web server to provide the Windows client software to users. You can make the Windows client software available on as many as five Web servers. This section walks you through setting up and testing the first Web server. Repeat the procedure as need for additional Web servers.

- 1 Create a subdirectory in the documents directory of your Web server for the Windows client software:

Web Server	Documents Directory
Apache 2 on NetWare 6.5	sys:\apache2\htdocs
Apache 1.3 on NetWare 6	sys:\apache\nwdocs
Netscape Enterprise Server for NetWare on NetWare 6	sys:\novonyx\suitespot\docs
Apache 2.2 on Linux	/srv/www/htdocs
Microsoft Internet Information Server (IIS) 5 on Windows Server 2000/2003/2003 R2	\inetpub\wwwroot

For example, you could create a subdirectory named *gw7client* in the documents directory of your Web server.

- 2 In the new client directory, create a *win32* directory.
- 3 Browse to the following directory:
software_distribution_directory\admin\utility\setupip
- 4 In the *setupip* directory, run *writeip.exe*.



- 4a** In the *IP Addresses* list, specify the location of the client directory you created in **Step 1** above.

For example, you could specify:

```
http://172.16.5.18/gw7client
```

or

```
http://intranet.corporate.net/gw7client
```

You can include proxy and port information, for example:

```
http://intranet.corporate.net/gw7client;proxy.corporate:1690
```

When you set up multiple Web servers, each location is checked in order during AutoUpdate, until a connection is made. If you select *Choose IP Address at Random*, the order in which the locations are checked is selected randomly when AutoUpdate occurs. This balances the load on each Web server.

- 4b** Select other download options as desired to control how the Windows client downloads the software from the Web server.

Download to a Temporary Directory: Select this option if you want the Windows client to download the updated software, install it, then delete the temporary location so that no trace is left on each user's workstation.

Download to a Specific Directory: Select this option if you want to control the directory on each user's workstation where the Windows client software is downloaded. This option allows you to choose whether the installation image remains on each user's workstation, the quantity of files to download, and whether each user can choose the location for the installation image. If you allow users to choose the location, users are prompted for the download directory.

- 4c** Click *OK*.

The `writeip.exe` program now creates a customized `setupip.exe` program. In addition, it creates a `writeip.ini` file that stores the options you selected when you ran `writeip.exe`.

- 4d** If you are installing in a multilingual environment and you want to suppress the language prompt during installation, add a section similar to the following to the `writeip.ini` file:

```
[Language]
ShowLanguageDialog=No
Language=Yes
```

where *Language* is one of the languages listed in the `setup.cfg` file. Add a *Language* line for each language that you want installed on each user's workstation. Without this section in the `writeip.ini` file, users are prompted to choose among the available languages.

- 5** From the `setupip` directory, copy the new `setupip.exe` file to the `software_distribution_directory\client\win32` directory.
- 6** Copy the `setupip.fil` file from the `setupip` directory to the new client directory you created on the Web server in **Step 1**.
- The `setupip.fil` file contains all of the Windows client software files that are language independent.
- 7** To support the languages in use by Windows client users, copy `setupip.xx` files from the `setupip` directory to the client directory you created on the Web server in **Step 1**.

The `setupip.xx` files (where `xx` represents a two-letter language code) contain all of the Windows client software files that are language specific.

8 Continue with [Using the Setup Configuration File](#).

66.1.2 Using the Setup Configuration File

The setup configuration file (`setup.cfg`) is an ASCII text file that supports extended ASCII characters. Its default location is the following directory:

```
software_distribution_directory\client
```

This is not the same directory where the Windows client Setup program (`setup.exe`) is located:

```
software_distribution_directory\client\win32
```

Therefore, by default, when a user runs the Setup program, the user must respond to the prompts that the Setup program displays, because the setup configuration file is not available.

The setup configuration file contains the responses normally provided by the user during the installation of the Windows client software. For example, the path for the client files, the folder for the GroupWise icons, and whether to automatically launch Notify are specified in this file. In addition, information can be added to the setup configuration file to add predefined LDAP directory service accounts to the Address Book in the client during installation.

If you modify the default setup configuration file and copy it to the same directory where the Setup program is located (that is, to the `win32` directory), the Setup program reads the setup configuration file and performs the installation according to the entries in the file. Depending on the entries in the setup configuration file, the user might or might not be prompted to provide information during the Windows client installation.

66.1.3 Modifying the Setup Configuration File

The setup configuration file (`setup.cfg`) is divided into the following sections. In the setup configuration file, each section head must be enclosed in brackets [] as shown in the list below.

Make a backup copy of the setup configuration file, then modify the file as needed so that the Setup program (`setup.exe`) performs the Windows client software installation the way you want it to, when you enable AutoUpdate.

- ♦ “[GroupWiseSetup]” on page 1105
- ♦ “[ShowSetup]” on page 1107
- ♦ “[AutoUpdate]” on page 1107
- ♦ “[Startup]” on page 1108
- ♦ “[GWCheck]” on page 1108
- ♦ “[IntegrationApps]” on page 1109
- ♦ “[Languages]” on page 1109

[GroupWiseSetup]

- ♦ “Version=” on page 1106
- ♦ “Path=” on page 1106

- ◆ “Folder=” on page 1106
- ◆ “LaunchMessenger=” on page 1106
- ◆ “LaunchNotify=” on page 1106
- ◆ “OutlookFirewallException=” on page 1106
- ◆ “GWMailTo=” on page 1106
- ◆ “IPAddress=” on page 1106
- ◆ “IPPort=” on page 1107
- ◆ “DefaultIPAddress=” on page 1107
- ◆ “DefaultIPPort=” on page 1107

Version=

Specifies the GroupWise version being installed. It must match the actual version being installed; otherwise, the Setup program does not use the setup configuration file. The default is *7.0*.

Path=

Specifies the path where you want GroupWise to be installed during a standard installation. The default path is *c:\Novell\GroupWise*.

Folder=

Specifies the Windows folder where GroupWise icons are created. The default is *Novell GroupWise*.

On the Windows *Start* menu, icons are provided for the GroupWise client, Notify, and the GroupWise Address Book.

LaunchMessenger=

Specifies whether GroupWise Messenger should be launched when GroupWise starts. The default is *No*.

LaunchNotify=

Specifies whether GroupWise Notify should be launched when GroupWise starts. The default is *No*.

OutlookFirewallException=

Specifies whether Outlook should be added to the Windows XP Firewall exceptions list. The default is *Yes*, which adds Outlook to the exceptions list.

GWMailTo=

Specifies whether GroupWise should be called when the user clicks a *MailTo* link in an HTML file displayed in a Web browser. The default is *Yes*.

IPAddress=

Optionally specifies the IP address for the client to always use (as opposed to the first time it starts). Use this setting to set the IP address per post office when using multiple post offices.

IPPort=

Optionally specifies the port for the client to always use (as opposed to the first time it starts)

DefaultIPAddress=

Optionally specifies the default IP address for the client to use the first time it starts. This should be an IP address that everyone on the system has access to (for example, *ngwnameserver*).

DefaultIPPort=

Optionally specifies the default port for the client to use the first time it starts.

[ShowSetup]

- ♦ “ShowDialogs=” on page 1107
- ♦ “ShowProgress=” on page 1107
- ♦ “Show Finish=” on page 1107

ShowDialogs=

Specify *No* to hide dialog boxes during the installation. Specify *Yes* to show the dialog boxes. The default is *Yes*.

If an entry is missing from the setup configuration file and *ShowDialogs=Yes*, the Setup program selects the default setting. If *ShowDialogs=No*, the Setup program prompts the user for a selection.

ShowProgress=

Specify *Yes* to show the progress indicator during the installation. Specify *No* to hide the progress indicator during installation. The default is *Yes*.

Show Finish=

Specify *Yes* to display the Finish dialog box during the installation. Specify *No* to hide this dialog box. The default is *Yes*.

[AutoUpdate]

When an update to the GroupWise software is available, users are prompted if they want to install the new software when they start GroupWise. For complete instructions on enabling AutoUpdate, see [Section 66.1.6, “Enabling AutoUpdate,” on page 1111](#).

- ♦ “Enabled=” on page 1108
- ♦ “SetupIPEnabled=” on page 1108
- ♦ “ForceUpdate=” on page 1108
- ♦ “GraceLoginCount=” on page 1108
- ♦ “PromptUntilUpdated=” on page 1108

Enabled=

Specify *Yes* if you want users to be prompted to update their Windows client software as soon as a newer version is available. Specify *No* if you want to disable the AutoUpdate feature. The default is *Yes*.

If you specify *No*, the *ForceUpdate=* entry below is ignored. This can be useful if you intend to distribute the client software using a different method, such as ZENworks[®] Desktop Management, or if you want to disable AutoUpdate at the post office level during a migration to a newer version of GroupWise.

SetupIPEnabled=

Specify *Yes* if you want AutoUpdate to obtain the Windows client software from a Web server, as described in “[Accessing the Windows Client Software from a TCP/IP Connection to a Web Server](#)” on page 1103. The default is *No*, which means that AutoUpdate needs a mapped drive by default.

ForceUpdate=

Select *Yes* if you want GroupWise to automatically update the users’ software. The default is *No*.

Users can still click *Cancel* to cancel the update. However, they cannot run the GroupWise client and access their mailboxes until they do update the client software.

GraceLoginCount=

Specify the number of grace logins allowed before you require the users to update their client software. The default is 0 (zero).

If *ForceUpdate* is set to *No* above, this entry is ignored.

PromptUntilUpdated=

Specify *Yes* if you want GroupWise to prompt the user to update the client each time the GroupWise client starts, until the user does update the client software. The default is *No*, which means that, if the user chooses not to update the client software, the user is allowed to continue running the current version indefinitely.

[Startup]

- ◆ “[Notify=](#)” on page 1108

Notify=

Specify *Yes* to place Notify in the Windows Startup folder so that it starts automatically when the computer starts. The default is *No*.

In the GroupWise client, users can configure GroupWise to start Notify automatically using *Tools > Options > Environment > Launch Notify on Startup*.

[GWCheck]

This section installs and enables GroupWise Check (GWCheck). GWCheck is a tool that performs maintenance and repair tasks on GroupWise databases in order to keep GroupWise running smoothly.

GWCheck is a standalone version of the Mailbox/Library Maintenance feature available in ConsoleOne®. GWCheck checks and repairs GroupWise user, message, library, and resource databases without having ConsoleOne and the GroupWise snap-in loaded. In addition to checking post office, user, and library databases, it can also check remote and archive databases that cannot be accessed by ConsoleOne because they are not available on the network.

- ♦ “InstallGWCheck=” on page 1109
- ♦ “GWCheckEnabled=” on page 1109

InstallGWCheck=

Specify *Yes* to install GWCheck files to the workstation. Specify *No* to not install GWCheck. The default is *Yes*.

GWCheckEnabled=

Specify *Yes* to install the files to the same directory as the GroupWise client (`grpwise.exe`), which results in the *Repair Mailbox* option being enabled under the *Tools* menu in the client. Specify *No* to install the files in a GWCheck subdirectory below the GroupWise client directory, which disables the *Repair Mailbox* option until the files are manually copied into the GroupWise directory. The default is *No*.

[IntegrationApps]

GroupWise installs integrations for the following applications, if found, unless the entry is set to *No*.

- ♦ Microsoft Excel
- ♦ Microsoft Word
- ♦ Microsoft PowerPoint
- ♦ Corel* Presentations*
- ♦ Corel Quattro Pro*
- ♦ Corel WordPerfect*

[Languages]

The default language is set to *English*, and all other languages are set to *No*, meaning that they are not installed. See the `setup.cfg` file for the list of languages. The GroupWise client might not yet be available in all listed languages.

66.1.4 Adding LDAP Directory Service Accounts

LDAP directory service accounts provide users with the ability to search directory services such as Bigfoot for names of people. Each search can check potentially millions of names. After locating a name through a directory service search, users can add those names to their personal address books.

You can add predefined LDAP directory service accounts to the Address Book by adding information to the setup configuration file. This information can be added even after the initial installation. After the accounts are added, this information does not need to be removed from setup configuration file. During subsequent installations, GroupWise adds any new accounts listed but does not update or duplicate existing LDAP accounts.

The user can also choose to add LDAP directory service accounts after the GroupWise client is installed.

To add an LDAP account during installation, add the following lines to the setup configuration file, providing information that is specific to the account:

```
[LDAP Account 1]
Description=Ldap Server1
Server=ldap.server1.com
Port=389
SearchRoot=c=us
Login=TRUE
```

You can add multiple accounts:

```
[LDAP Account 2]
Description=Ldap Server2
Server=ldap.server2.com
Port=389
SearchRoot=0=widget, c=us
Login=FALSE
```

Parameter	Description
Description=	The name that displays in the list of LDAP directory services in the Address Book.
Server=	The LDAP server DNS hostname or IP address.
Port=	The LDAP directory service port number. The number is usually 389.
SearchRoot=	The base or root of the LDAP directory service where the user searches for names. For example, the base could be a country, organization, or other type of grouping. This is not required for all LDAP directory services. If a search root is required, the LDAP directory service provides the information.
Login=	TRUE means users are prompted for a username and password when they use that LDAP directory service.

66.1.5 Testing Your AutoUpdate Configuration

Before you enable AutoUpdate for client users, you should test the modifications you have made to the setup configuration file.

- 1 Copy the modified `setup.cfg` file from the `client` directory to the `win32` directory in the software distribution directory.
- 2 On your own workstation or a test workstation, run `setup.exe` in the `win32` directory
- 3 If the Windows client installation goes as planned, continue with [Step 5](#) if you are using SetupIP.

or

If client workstations will be updated from the same software distribution directory where you just tested the `setup.exe` program, skip to [Section 66.1.6, “Enabling AutoUpdate,” on page 1111](#).

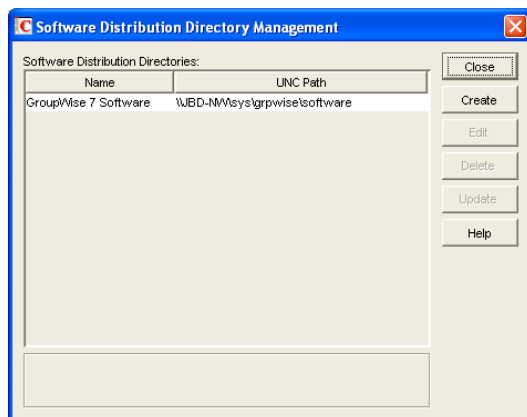
- 4 If the Windows client installation does not go as planned, review your modifications to the `setup.cfg` file, as described in [Section 66.1.3, “Modifying the Setup Configuration File,”](#) on [page 1105](#), then return to [Step 1](#) repeat the test.
- 5 After you can install successfully from the software distribution directory, copy the modified `setup.cfg` file from the `client` directory to the `win32` directory on the Web server.
- 6 E-mail the `setupip.exe` file to yourself.
- 7 On your own workstation or a test workstation:
 - 7a Make sure you are connected to the Internet, so that you can access the Web server where the Windows client software is located.
 - 7b Run `setupip.exe`.
Because you have already tested your setup configuration file, installation from the Internet should also run as expected.
- 8 If you encounter problems with setting up AutoUpdate and SetupIP, more detailed background information and instructions are provided in:
 - ♦ *TID 3730554: Novell GroupWise SetupIP Client Installation Guide* in the [Novell Support Knowledgebase](#) (<http://www.novell.com/support>)
 - ♦ *Upgrading Clients to GroupWise 6 in a NetWare Environment* (http://support.novell.com/techcenter/articles/nc2001_12c.html) by Danita Zanre
 - ♦ *Consultants Corner: (Client) Push Comes to Shove* (<http://www.novell.com/coololutions/feature/19506.html>) by Gregg Hinchman

Although these documents reference earlier versions of GroupWise, the AutoUpdate and SetupIP strategies still apply.
- 9 When testing is successful, continue with [Enabling AutoUpdate](#).

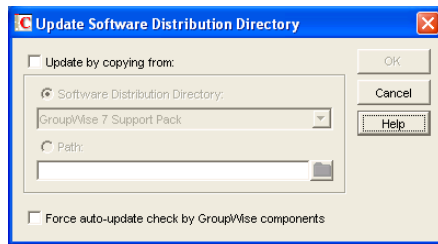
66.1.6 Enabling AutoUpdate

After you have customized the setup configuration file (`setup.cfg`) and tested it, you are ready to enable AutoUpdate. After AutoUpdate is enabled, Windows client users start experiencing client software updates the next time they start the Windows client. They might or might not be prompted and they might or might not see information displayed during the update, depending on your customized entries in the setup configuration file.

- 1 In ConsoleOne, click *Tools > GroupWise System Operations > Software Directory Management*.



- 2 Select the software distribution directory, then click *Update*.



- 3 Select *Force Auto-Update Check by GroupWise Components*.

This causes the GroupWise client to check for a new version each time it starts. If a new version is found, the user is prompted to update the client software, unless you set *ForceUpdate=Yes* in the setup configuration file.

If a mapped drive to the software distribution directory is found on the user's workstation, the client software is installed from the mapped drive. If a mapped drive to the software distribution directory is not found on the user's workstation, GroupWise checks the Web server locations you specified using *writeip.exe* and installs the client software from one of those locations.

If no connection to the software distribution directory can be made, a *setupip.err* file is created in *c:\windows* of the user's workstation. This file explains why none of the connections could be made.

- 4 Repeat **Step 1** through **Step 3** for each software distribution directory where you have updated the software and modified the setup configuration file.

66.1.7 Modifying the *addon.cfg* File

The *addon.cfg* file is an ASCII text file that supports extended ASCII characters. The GroupWise client setup program uses the *addon.cfg* file to install additional components on users' workstations. The components might include software not shipped with GroupWise. The *addon.cfg* is specific to each program being installed. The required program files and the associated *addon.cfg* file must be copied to a subdirectory under *software_distribution_directory\client\win32\addons*.

During the client installation, the GroupWise setup program searches the subdirectories under the *\addons* directory for any *addon.cfg* files. The setup program then executes the installation program for that component using the settings specified in *addon.cfg*. If an entry is missing in the *addon.cfg* file, the installation program prompts the user for the required information.

The *addon.cfg* files for Internet Browser Mail Integration, PDA Connect, and GroupWise Tip of the Day are included in the corresponding subdirectories under *addons*, but the basic control for installing these two components is in the [GWMAILTO], [PDACONNECT], and [GWTip] sections of *setup.cfg*.

For information about installing GroupWise Messenger as an additional component by modifying the *addon.cfg* file, see "Installing the Messenger Windows Client as a GroupWise Windows Client Add-On" in "Managing Messenger Client Users" in the *Novell Messenger Administration Guide*.

When creating an *addon.cfg* file for a different component, you must include at least the following section headings and associated entries. If the installation program requires additional

information, you can include that information as additional entries. The required entries are as follows:

- ♦ “[GroupWiseAddon]” on page 1113
- ♦ “[Name]” on page 1113
- ♦ “[Description]” on page 1113

[GroupWiseAddon]

This section head must be included with the following entries.

Entry	Example
<code>Install=add-on's_setup_program_filename</code>	<code>Install=setup.exe</code>
<code>Parameters=parameters_to_be_passed_on_to_the_add-on's_setup_program</code>	<code>Parameters=/install</code>
<code>Silent=parameters_to_append_to_administrator-defined_setup</code>	<code>Silent=/s</code>
<code>Size=installed_size_of_add-on_in_kilobytes</code>	<code>Size=100</code>

[Name]

Under this section head, specify the two-letter language code for the language being installed, followed by the name of the add-on. This name appears in the components listing.

Example: `US=GroupWise Tip of the Day`

[Description]

Under this section head, specify the two-letter language code followed by a short description of the add-on. This description appears in the *Description* field when the component is highlighted in the component listing.

Example: `US=GroupWise Tip of the Day introduces new features and provides tips for using the GroupWise client.`

66.1.8 Error Log File

If an error occurs during the installation and `ShowDialogs=No`, the error message is logged in `gwsetup.err` in the user's `\windows` directory. If `ErrorMessage=error_text` has been added as the last entry under the [GroupWiseSetup] section, the error text is displayed. Otherwise, a generic error message is displayed notifying the user to contact the system administrator. The log file is an ASCII text file.

66.2 Using ZENworks Desktop Management to Distribute the GroupWise Windows Client

You can use the Application Management functionality in Novell ZENworks Desktop Management to distribute the GroupWise Windows client to workstations. The following sections provide instructions:

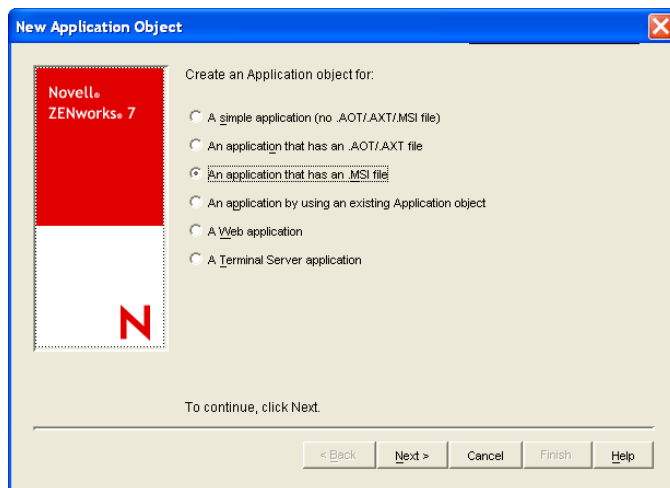
- ♦ [Section 66.2.1, “Creating a GroupWise Client Application Object,”](#) on page 1114
- ♦ [Section 66.2.2, “Using GroupWise 7 Tuner,”](#) on page 1117
- ♦ [Section 66.2.3, “Configuring ZENworks to Use a Transform File,”](#) on page 1119

IMPORTANT: This information assumes that you are familiar with ZENworks Desktop Management. For background information, or for help completing the ZENworks tasks outlined in the steps below, see the ZENworks Desktop Management documentation at the [Novell ZENworks Documentation Web site \(http://www.novell.com/documentation-index/index.jsp?category=ZENworks\)](http://www.novell.com/documentation-index/index.jsp?category=ZENworks).

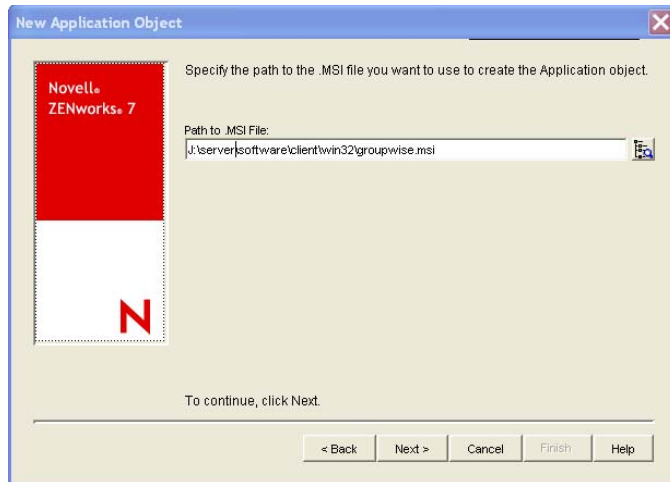
66.2.1 Creating a GroupWise Client Application Object

The following steps explain how to use ZENworks Desktop Management to create a GroupWise client Application object from the `.msi` file. Depending on your version of ZENworks Desktop Management, the steps might be slightly different. If you want to change the default MSI installation, then you must use the GroupWise 7 Tuner program to create a custom transform file. For more information on how to use GroupWise 7 Tuner, see [Section 66.2.2, “Using GroupWise 7 Tuner,”](#) on page 1117.

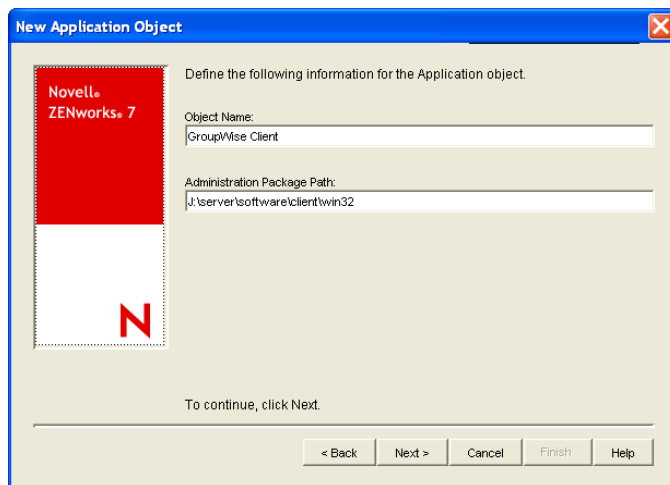
- 1 In ConsoleOne[®], right-click the container where you want to create the GroupWise client Application object, then click *New > Object* to display the New Object dialog box.
- 2 In the list of objects, click *Application*, then click *OK* to display the New Application dialog box.



- 3 Select *An Application that Has an .msi File*, then click *Next* to display the `.msi` file path page.



- 4 In the *Path to .msi File* field, browse for and select the `groupwise.msi` file.
- 5 Click *Next* to display the Application object information page, then customize the object name, source path, and target path information if necessary.

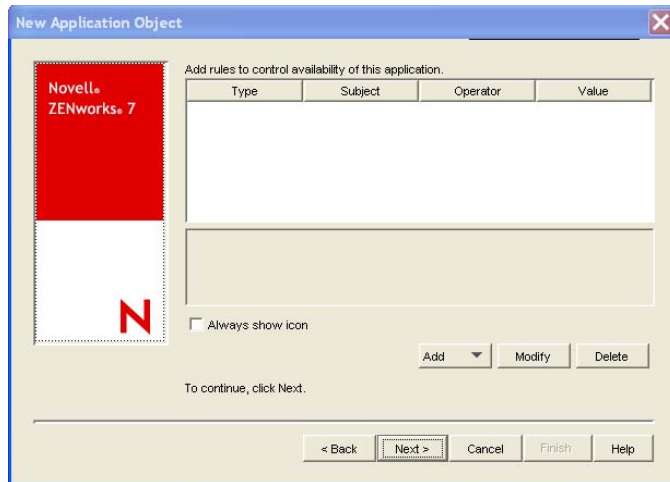


Object Name: The name to be used for the Application object in eDirectory. You might want to use a descriptive name.

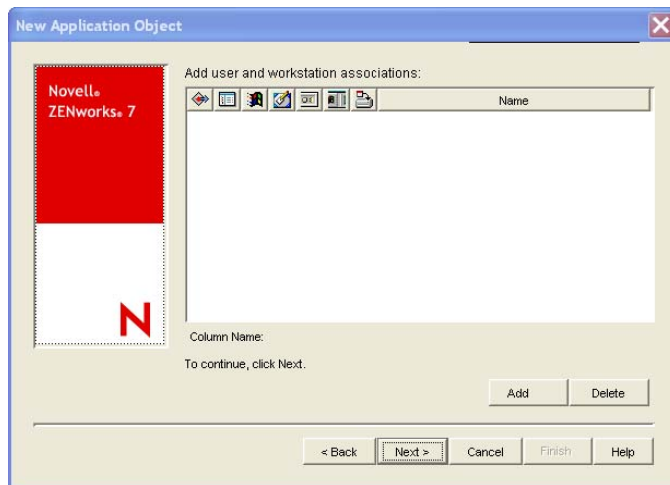
Administration Package Path: The directory from which the GroupWise client will be installed. Specify the full path to the client directory (for example, `\\server1\vol1\grpwise\software\client\win32`). Unless all users will have the same drive mapping to the volume, make sure you use a UNC path.

This path is saved as the Administration Package Path variable. If you need to change it later, you can do so on the Application object's Sources page (Application object > *Common* > *Sources*).

- 6 Click *Next* to display the rules to control availability of this application page, then modify the rules if necessary.



7 Click *Next* to display the user associations page.



You can associate the Application object with the users and workstations you want the object distributed to at this time, or you can create the associations later.

- 8 After you add the associations you want, click *Next*, review the information, then click *Finish* to create the Application object.
- 9 Right-click the newly-created GroupWise client Application object, then click *Properties*.
- 10 Configure any other Application object settings required to provide the performance or functionality you want.

For example, you can configure the Application object so that the GroupWise client is installed immediately upon distribution to the user's workstation, without any intervention by the user. Or, you can change the locations where the GroupWise client's icon is displayed. Or, you can specify the location of a transform file for custom MSI installs. For information about Application object settings, see the ZENworks Desktop Management documentation at the [Novell ZENworks Documentation Web site \(http://www.novell.com/documentation-index/index.jsp?category=ZENworks\)](http://www.novell.com/documentation-index/index.jsp?category=ZENworks).

After you associate the Application objects with the users you want, Novell Application Launcher™ displays the Application object's icon on the users' workstations, if the workstation meets the

operating system requirements. If the Application object's icon does not appear immediately, have the user refresh Novell Application Launcher.

If a service is preventing the GroupWise Windows client from installing correctly you can add a property to the GroupWise application object that stops the service until the installation has finished.

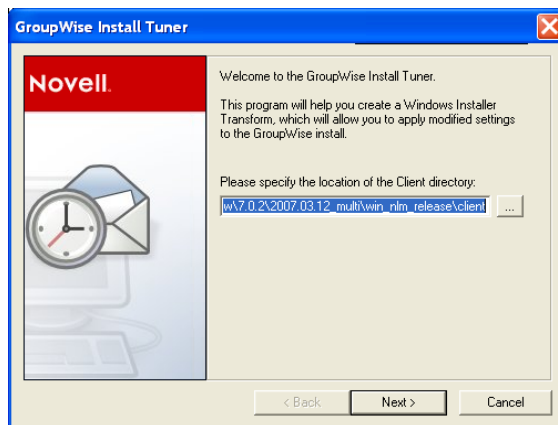
- 1 In ConsoleOne, right-click the container where you created the GroupWise client Application object, then double-click the GroupWise Application object.
- 2 Click *MSI > Properties*, then click *Add*.
- 3 In the *Value name* field, type *STOPSERVICE*.
- 4 In the *Value Data* field, type the name of the service to stop.
- 5 Click *OK* twice.

66.2.2 Using GroupWise 7 Tuner

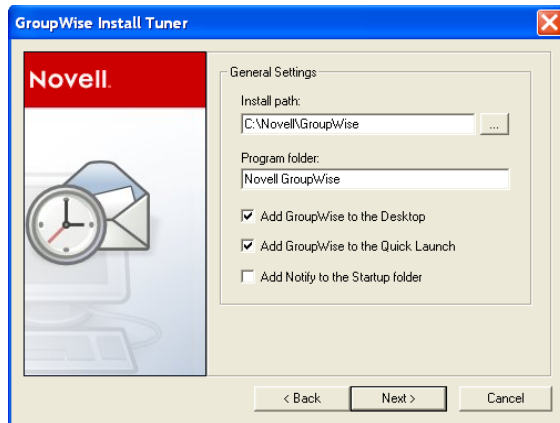
GroupWise 7 Tuner is an application that allows you to customize your MSI install. The Tuner application creates a transform file called *groupwise.mst*, which you can specify to use when performing an MSI install with ZENworks. You must have write access to the software distribution directory to use the GroupWise 7 Tuner application.

NOTE: If you install the GroupWise client using a Tuner file to a protected area, such as the *C:\Program Files* directory, the installation fails if you try to install using a non-Administrator user. You must install the GroupWise client to an unprotected area such as, *C:\Novell\GroupWise* if you are using a non-Administrator user.

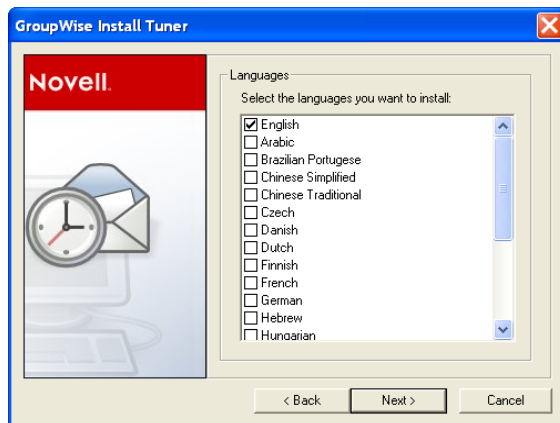
- 1 From the *\admin\UTILITY\GWTUNER* directory of the GroupWise 7 Support Pack 1 or greater download, select the *GWTuner.exe* file, then click *OK* to run the GroupWise 7 Tuner application.
- 2 Specify the location of the client distribution directory on your GroupWise system, then click *Next*.



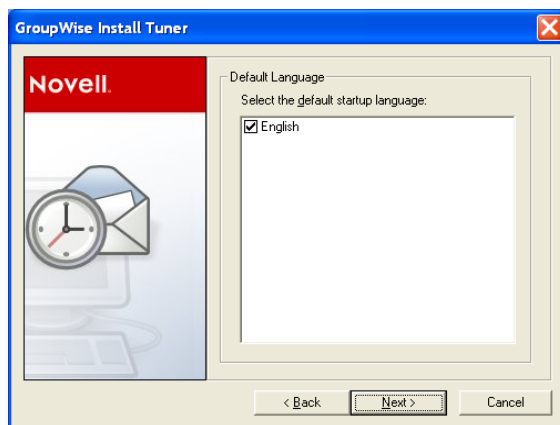
- 3 Specify where the GroupWise client should be installed on the client machines.



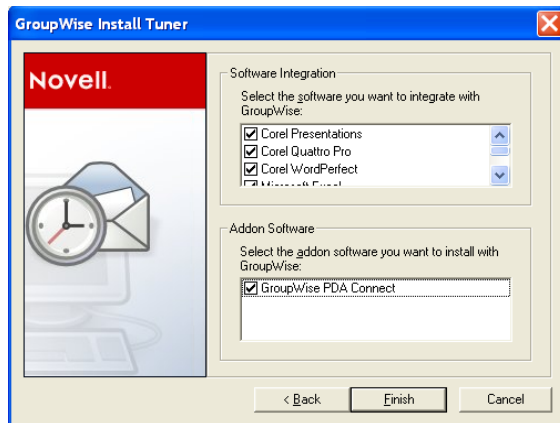
- 4 Specify which program folder the GroupWise client should be installed to.
- 5 Select if you want to add a GroupWise icon to the client desktop.
- 6 Select if you want to add a GroupWise icon to the client Quick Launch.
- 7 Select if you want to add GroupWise to the client Startup folder.
- 8 Click *Next* to continue.
- 9 Select the languages to install, then click *Next*.



- 10 Select the default startup language for the client, then click *Next*.



- 11 Select which software integration you want the client to use.



- 12 Select which add-on software to install with the client, then click Finish to create the transform file (`groupwise.mst`) in the client software distribution directory.

66.2.3 Configuring ZENworks to Use a Transform File

After you have created the transform file (`groupwise.mst`), you must configure ZENworks to use the transform file when doing MSI installations.

- 1 From ConsoleOne, right-click the application file that was created in [Section 66.2, “Using ZENworks Desktop Management to Distribute the GroupWise Windows Client,”](#) on [page 1114](#), then click *Properties*.
- 2 Click the *MSI > Transform* tab.
- 3 Click *Add*, then browse to the location of the transform file (`groupwise.mst`).
- 4 Click *OK* to add the transform file to the Transform List.
- 5 Click *OK* again.

66.3 Using Novell ZENworks Linux Management to Distribute the GroupWise Cross-Platform Client

You can install the GroupWise Cross-Platform client and agents using Novell ZENworks Linux Management or later. Refer to the [Novell ZENworks Linux Management site \(http://www.novell.com/products/zenworks/linuxmanagement/\)](http://www.novell.com/products/zenworks/linuxmanagement/) for additional information.

Supporting the GroupWise Client in Multiple Languages

67

The GroupWise® client software is available in a broad range of languages to meet the needs of users in many countries. If your GroupWise system services users who speak more than one language, the following tasks help you meet your multilingual users' needs.

- ♦ [Section 67.1, “Providing the GroupWise Client Software in Multiple Languages,” on page 1121](#)
- ♦ [Section 67.2, “Providing Post Office Support for Multiple Languages,” on page 1121](#)

67.1 Providing the GroupWise Client Software in Multiple Languages

- 1 Make sure that you have the multilingual version of GroupWise.
- 2 Install the client software in the languages you need in one or more software distribution directories, following the instructions in [Section 4.9, “Software Directory Management,” on page 65](#).
- 3 Distribute the client software to users, as described in [Chapter 66, “Distributing the GroupWise Client,” on page 1101](#).

By installing the GroupWise client software in their language of choice, users can begin using GroupWise in that language immediately. However, there are a few language-related details of GroupWise functionality that are not taken care of by the client software running on users' workstations. For a fuller multilingual implementation, continue with [Section 67.2, “Providing Post Office Support for Multiple Languages,” on page 1121](#).

67.2 Providing Post Office Support for Multiple Languages

A few aspects of GroupWise functionality are affected by the language in use by the POA running for the post office to which users belong. The POA returns certain text in the language in which it is running, not the language in use on users' workstations.

- ♦ The status information (Delivered, Opened, and so on) displayed in the Properties page of items
- ♦ The text of return notification mail receipts (if the user has enabled this type of notification)
- ♦ The sort order in the Address Book

In some circumstances, these issues can be resolved by grouping users who speak the same language into the same post office and then installing the POA in the same language that the users are using. For more information, see [Section 11, “Creating a New Post Office,” on page 155](#).

At present, the POA is available in fewer languages than the GroupWise client, so this solution helps only those client users who are somewhat familiar with the language in use by the POA. For more information, see [Chapter 7, “Multilingual GroupWise Systems,” on page 105](#).

Tools for Analyzing and Correcting GroupWise Client Problems

68

The following tools can assist you in analyzing and correcting GroupWise® client problems.

- ♦ [Section 68.1, “GroupWise Exception Handler for the Windows Client,” on page 1123](#)
- ♦ [Section 68.2, “GroupWise Check,” on page 1123](#)

68.1 GroupWise Exception Handler for the Windows Client

In the event that the GroupWise Windows client causes an exception (or “crashes”), GroupWise generates a GroupWise Exception Report. This report contains information that is useful in analyzing the problem that the client is having so that it can be solved.

The report is saved in `\temp\grpwise.rpt`. The `\temp` directory used is the one specified by the `TMP` environment variable, or if not defined by `TMP`, the one specified by the `TEMP` environment variable. If neither environment variable is defined, GroupWise uses the current the `windows` directory.

Each time an exception or crash occurs, a new report is appended to `grpwise.rpt`. If the file reaches 100 KB, the oldest reports (at the beginning of the file) are deleted.

The GroupWise Exception Report contains information such as the date and time the report was generated, the exception code, fault address, date of `grpwise.exe`, computer and username where the exception occurred, hardware and operating system information, process modules, raw stack dumps, and call stacks.

68.2 GroupWise Check

GroupWise Check (GWCheck) is a tool that performs maintenance and repair tasks to keep GroupWise operating efficiently. It is essentially a standalone version of the Mailbox/Library Maintenance feature available in ConsoleOne®. GroupWise Check checks and repairs GroupWise user, message, library, and resource databases without having ConsoleOne and the GroupWise snap-in loaded. In addition to checking post office, user, and library databases, it also checks remote and archive databases.

- ♦ [Section 68.2.1, “Enabling GroupWise Check in the Windows Client,” on page 1124](#)
- ♦ [Section 68.2.2, “Using GroupWise Check with the Cross-Platform Client,” on page 1124](#)

68.2.1 Enabling GroupWise Check in the Windows Client

GroupWise Check can be installed with the GroupWise Windows client (unless you have specified in `setup.cfg` that it not be installed), and is available by clicking *Tools > Repair Mailbox* in the client in Caching and Remote modes after you complete the following:

- 1 Locate the directory named `gwcheck`. This is a subdirectory of the directory where the client is installed (usually `c:\novell\groupwise`).
- 2 Locate `grpwise.exe`. It is usually in `c:\novell\groupwise`.
- 3 Copy all the files in `gwcheck` to the directory where `grpwise.exe` is located.

You can now run GroupWise Check in Caching and Remote mode. The GroupWise Check dialog box is titled GroupWise Mailbox Maintenance. You can also use Ctrl+Shift when accessing a Caching or Remote mailbox to run GroupWise Check before opening the mailbox.

For detailed information about GroupWise Check, click Help or see [Section 34.1, “GroupWise Check,”](#) on page 429.

68.2.2 Using GroupWise Check with the Cross-Platform Client

GroupWise Check is not accessible from the Cross-Platform client but can be installed on a Linux workstation if you need to repair local databases. For installation instructions, see [Section 34.1.3, “Using GWCheck on Linux,”](#) on page 432.

GWCheck is installed by default on the Cross-Platform client for Macintosh. You must start GWCheck from a terminal window on a Macintosh. For further instructions, see [Section 34.1.4, “Using GWCheck on Macintosh,”](#) on page 434.

Startup Switches for the GroupWise Client

69

The GroupWise® client has optional startup switches that you can use when you start the program. Some of these startup switches are for your convenience, while others are necessary to run GroupWise on your particular hardware. Some switches are not available in the Cross-Platform client.

Windows Client	Cross-Platform Client
<i>/@u-?</i>	<i>-@u=?</i>
<i>/@u-user_ID</i>	<i>-@u=user_ID</i>
<i>/bl</i>	N/A
<i>/c</i>	N/A
<i>/cm</i>	N/A
<i>/iabs</i>	N/A
<i>/ipa-IP_address_or_hostname</i>	<i>-ipa=IP_address_or_hostname</i>
<i>/ipp-port_number</i>	<i>-ipp=port_number</i>
<i>/l-xx</i>	<i>-l= xx</i>
<i>/la-network_ID</i>	N/A
<i>/nu</i>	<i>-nu</i>
<i>/ph-pathname</i>	<i>-ph=pathname</i>
<i>/pc-path_to_caching_mailbox</i>	<i>-pc=path_to_caching_mailbox</i>
<i>/pr-path_to_remote_mailbox</i>	N/A
N/A	<i>-ui=xxx</i>

69.1 /@u-?

Displays a login dialog box whenever you open the GroupWise client, allowing you to supply any necessary login information.

Syntax: */@u-?*

Example: `groupwise.exe /@u-?`

69.2 /@u-user_ID

Lets you use your GroupWise user ID to use the GroupWise client as yourself on another user's computer. The other user remains logged on to the network.

Syntax: /@u-user_ID

Example: groupwise.exe /@u-ltanaka

69.3 /bl

Prevents the GroupWise client logo screen from being displayed when you start the GroupWise client.

Syntax: /bl

Example: groupwise.exe /bl

This startup switch is not available in the Cross-Platform client.

69.4 /c

Checks for unopened items. If there are unopened items, the GroupWise client opens as usual. Otherwise, the GroupWise client does not start.

Syntax: /c

Example: groupwise.exe /c

This startup switch is not available in the Cross-Platform client.

69.5 /cm

Checks for unopened items. If there are unopened items, the GroupWise client opens minimized and a beep sounds. Otherwise, the GroupWise client does not start.

Syntax: /cm

Example: groupwise.exe /cm

This startup switch is not available in the Cross-Platform client.

69.6 /iabs

Initializes the Address Book when the GroupWise client starts.

Syntax: /iabs

Example: groupwise.exe /iabs

This startup switch is not available in the Cross-Platform client.

69.7 /ipa-IP_address_or_hostname

Lets you specify the IP address or the hostname when you are running in client/server mode.

Syntax: /ipa-IP_address

Example: groupwise.exe /ipa=127.65.45.1

69.8 /ipp-port_number

Lets you specify the IP port number when you are running in client/server mode.

Syntax: /ipp-port_number

Example: groupwise.exe /ipp-1677

69.9 /l-xx

Applies only if you have two or more language versions or language modules. This option instructs GroupWise to override the default environment language (under Environment in Options) with the language specified by the language code *xx*. The language codes are listed below. This table lists the language codes used by all Novell® products. GroupWise might not yet be available in some of the listed languages. For current information, contact your local reseller.

Table 69-1 Language Codes

Language	Code
Arabic	AR
Chinese Simplified	ZH-CN
Chinese Traditional	ZH-TW
Czech	CS
Danish	DK
Dutch	NL
English	US
Finnish	SU
French	FR
German	DE
Hebrew	HE
Hungarian	MA
Italian	IT
Japanese	JA
Korean	KO
Norwegian	NO
Polish	PL
Portuguese	BR
Russian	RU
Spanish	ES
Swedish	SV

Syntax: /l-xx

Example: groupwise.exe /l-ES

69.10 /la-network_ID

Lets you use your network ID to use the GroupWise client as yourself on another user's computer. The other user remains logged on to the network.

Syntax: /la-network_ID

Example: groupwise.exe /la-jgrey

This startup switch is not available in the Cross-Platform client.

69.11 /nu

Turns off AutoRefresh. If this option is selected, click *View > Refresh* whenever you want to update the display to see the items currently in your mailbox.

Syntax: /nu

Example: groupwise.exe /nu

69.12 /ph-pathname

Lets you specify the path to the post office.

Syntax: /ph-pathname

Example: groupwise.exe /ph-j:\mail\denver1

69.13 /pc-path_to_caching_mailbox

Opens GroupWise in Caching mode. GroupWise must be restarted when you change from Online to Caching.

Syntax: /pc-path_to_caching_mailbox

Example: groupwise.exe /pc-c:\novell\groupwise\cache

69.14 /pr-path_to_remote_mailbox

Opens the GroupWise client in Remote mode. This startup switch can be used in the Target text box only.

Syntax: /pr-path_to_remote_mailbox

Example: groupwise.exe /pr-c:\novell\groupwise\remote

This startup switch is not available in the Cross-Platform client.

69.15 -ui=xxx

Lets you specify which user interface “Look and Feel” to use. This switch is currently only available on Linux. Currently only gtk is supported. This starts the GroupWise Cross-Platform client on Linux using the GTK “Look and Feel”. This only works properly if you are using the GNOME* desktop manager.

Syntax: -ui=xxx

Example: /opt/novell/groupwise/client/bin/groupwise.sh -ui=gtk

this startup switch is not available in the Windows client or the Macintosh Cross-Platform client.