

# **Configuring Google Cloud Messaging Service for Android Devices**

## **ZENworks® Mobile Management 2.8.x**

November 2013

## Legal Notices

Novell, Inc., makes no representations or warranties with respect to the contents or use of this documentation, and specifically disclaims any express or implied warranties of merchantability or fitness for any particular purpose. Further, Novell, Inc., reserves the right to revise this publication and to make changes to its content, at any time, without obligation to notify any person or entity of such revisions or changes.

Further, Novell, Inc., makes no representations or warranties with respect to any software, and specifically disclaims any express or implied warranties of merchantability or fitness for any particular purpose. Further, Novell, Inc., reserves the right to make changes to any and all parts of Novell software, at any time, without any obligation to notify any person or entity of such changes.

Any products or technical information provided under this Agreement may be subject to U.S. export controls and the trade laws of other countries. You agree to comply with all export control regulations and to obtain any required licenses or classification to export, re-export or import deliverables. You agree not to export or re-export to entities on the current U.S. export exclusion lists or to any embargoed or terrorist countries as specified in the U.S. export laws. You agree to not use deliverables for prohibited nuclear, missile, or chemical biological weaponry end uses. See the [Novell International Trade Services Web page \(http://www.novell.com/info/exports/\)](http://www.novell.com/info/exports/) for more information on exporting Novell software. Novell assumes no responsibility for your failure to obtain any necessary export approvals.

Copyright © 2012-13 Novell, Inc. All rights reserved. No part of this publication may be reproduced, photocopied, stored on a retrieval system, or transmitted without the express written consent of the publisher.

Novell, Inc.  
1800 South Novell Place  
Provo, UT 84606  
U.S.A.  
[www.novell.com](http://www.novell.com)

*Online Documentation:* To access the latest online documentation for this and other Novell products, see the [Novell Documentation Web page \(http://www.novell.com/documentation\)](http://www.novell.com/documentation).

## Novell Trademarks

For Novell trademarks, see [the Novell Trademark and Service Mark list \(http://www.novell.com/company/legal/trademarks/tmlist.html\)](http://www.novell.com/company/legal/trademarks/tmlist.html).

## Third-Party Materials

All third-party trademarks are the property of their respective owners.

## Table of Contents

<b>Google Cloud Messaging for Android</b>	<b>4</b>
<b>Set up GCM</b>	<b>6</b>
Step 1: Create a Google API Project .....	6
Step 2: Enable GCM Service .....	7
Step 3: Obtain the API Key from the Google API Website .....	7
Step 4: Register the Project ID with Google .....	9
<b>Configure the Server for GCM Service</b>	<b>9</b>

# Google Cloud Messaging for Android

## What Is GCM

Google Cloud Messaging (GCM) for Android is a service that allows *ZENworks Mobile Management* to send push notifications from the server to the *ZENworks Mobile Management* Android device agent.

## How GCM Works

*ZENworks Mobile Management* can use the Google Cloud Messaging service to let Android devices know that it is time to synchronize. Each device establishes an accredited and encrypted IP connection with the GCM service. Whenever notifications for the device are available, the *ZENworks Mobile Management* server connects with GCM servers. GCM then pings the device telling it to synchronize with *ZENworks Mobile Management*. This method of initiating synchronization is used in place of the *ZENworks Mobile Management* app's device connection schedule, eliminating delayed updates to the device. Using the service offers added functionality in the following ways:

- Security commands such as Full Wipe or Lock Device are applied immediately.
- Changes made to a policy suite or user settings are applied immediately.
- Android corporate resource assignments are applied immediately.
- Fewer resources are used than with direct push, since the connection is not persistent.

## Requirements

- *ZENworks Mobile Management* version 2.8.2 or later
- Port 5228-5230 (GCM does not provide specific IPs, so it frequently changes IPs).
- A Google Mail (Gmail) account (required for obtaining the GCM token and Sender ID)
- Submit Sender ID to Google for approval (approval process can take up to several weeks)

## Prerequisites for Devices

- Devices must run Android 2.2 or higher.
- Certain 2.2.x devices will not register with GCM properly. In this case, the *ZENworks Mobile Management* device connection schedule handles the aspects of queuing of messages and delivery to the target Android app running on the device.
- Devices with an Android OS lower than 4.0.4 must have a Gmail account and have the Google Play Store application installed on the device.
- A Google account is not required on devices running Android OS 4.0.4 or higher.

## An Overview of the Steps to Set Up GCM Service

Only one project is required per *ZENworks Mobile Management* system, regardless of the number of organizations hosted on the server.

From the main page of the Google APIs Console:

1. Create a Google API project that will generate the GCM Sender ID.
2. Enable the GCM Service in the main page of the Google APIs Console.
3. Obtain an API Key.
4. Submit Sender ID to Google for approval (approval process can take up to several weeks)

On the *ZENworks Mobile Management* server:

5. Enter the GCM credentials on the *ZENworks Mobile Management* server and enable the service for each organization.

# Set up GCM

---

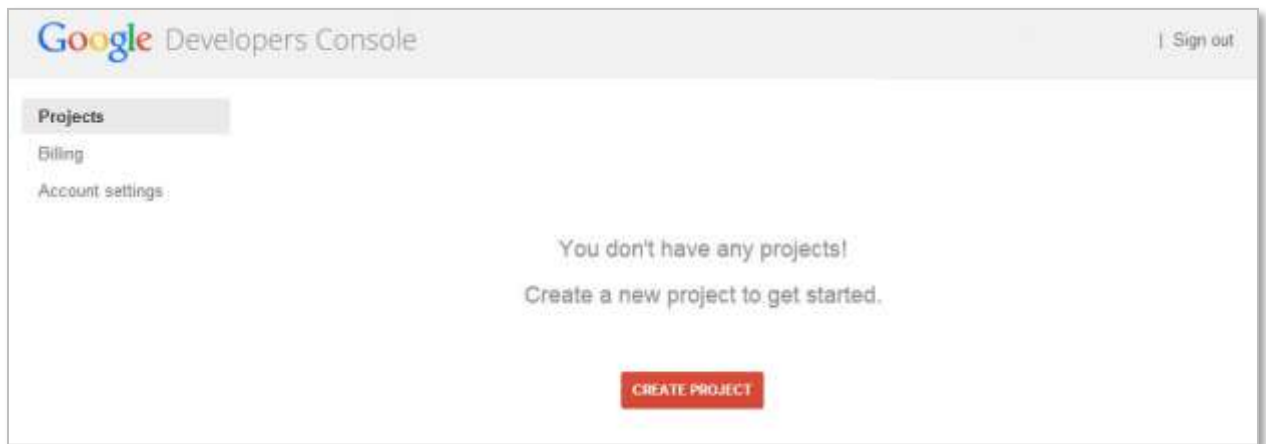
## Step 1: Create a Google API Project

Make sure you have a Gmail account before you begin.

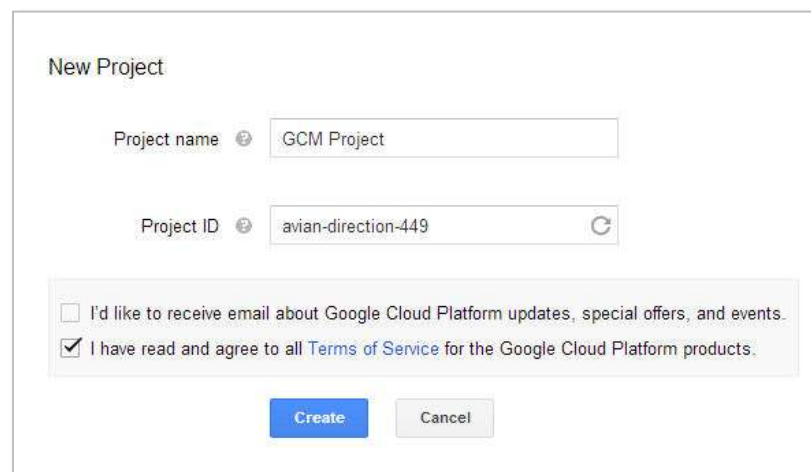
1. Navigate to the Google API Console page at <https://code.google.com/apis/console> and sign in using your Gmail account credentials. Do not choose the option to use an older version of the Developers Console.

**Note:** If you have existing projects, you will see the Google API dashboard first. Create a new project by clicking *Create project . . .*

2. Click **Create project . . .**



3. Enter a name for the project in the **Project name** field. Make a note of the **Project ID** that has been assigned. This will be used later as the GCM **Sender ID**.
4. Check the box next to the *Terms of Service* for the Google Platform products and click **Create**. The *Project ID* and *Project Number* will display on the main Google API Console page.

A screenshot of the 'New Project' form. It features two input fields: 'Project name' with the value 'GCM Project' and 'Project ID' with the value 'avian-direction-449'. Below the fields are two checkboxes: the first is unchecked with the text 'I'd like to receive email about Google Cloud Platform updates, special offers, and events.', and the second is checked with the text 'I have read and agree to all Terms of Service for the Google Cloud Platform products.'. At the bottom are 'Create' and 'Cancel' buttons.

---

## Step 2: Enable GCM Service

1. From the left panel of the main Google API Console page, select **APIs & auth > APIs**.
2. Scroll to locate the **Google Cloud Messaging for Android** and click **OFF** to toggle the option ON.

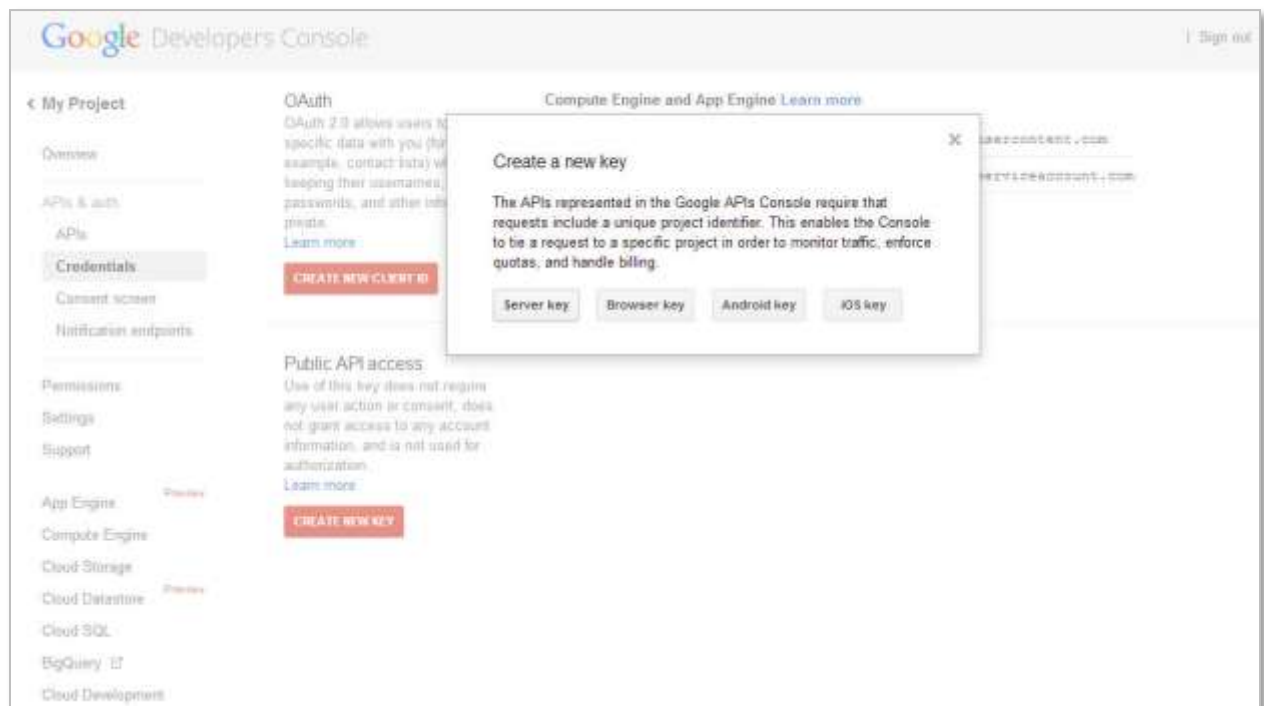


3. When the terms of service display, check the box beside the agreement statement and click **Accept**. GCM is now enabled for the project.

---

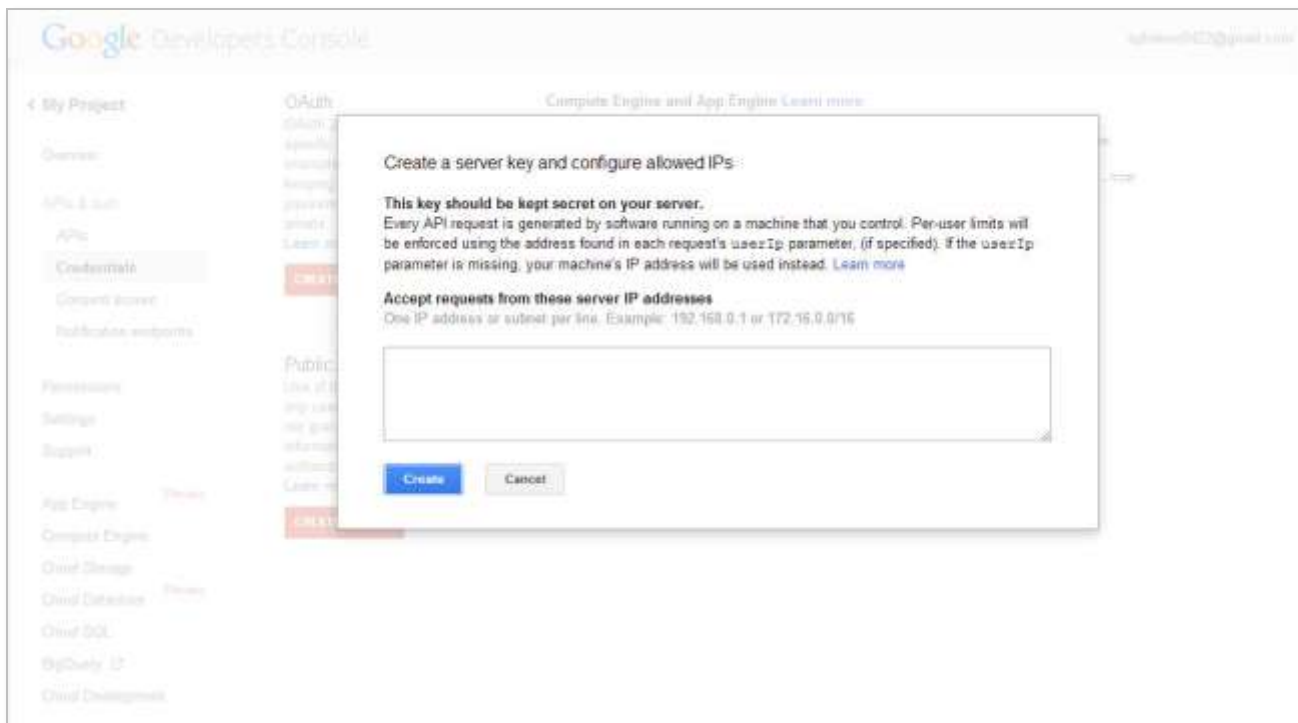
## Step 3: Obtain the API Key from the Google API Website

1. Again, from the left panel of the main Google API Console page, select **APIs & auth > Credentials**.
2. Under *Public API access*, click the **CREATE NEW KEY** button.

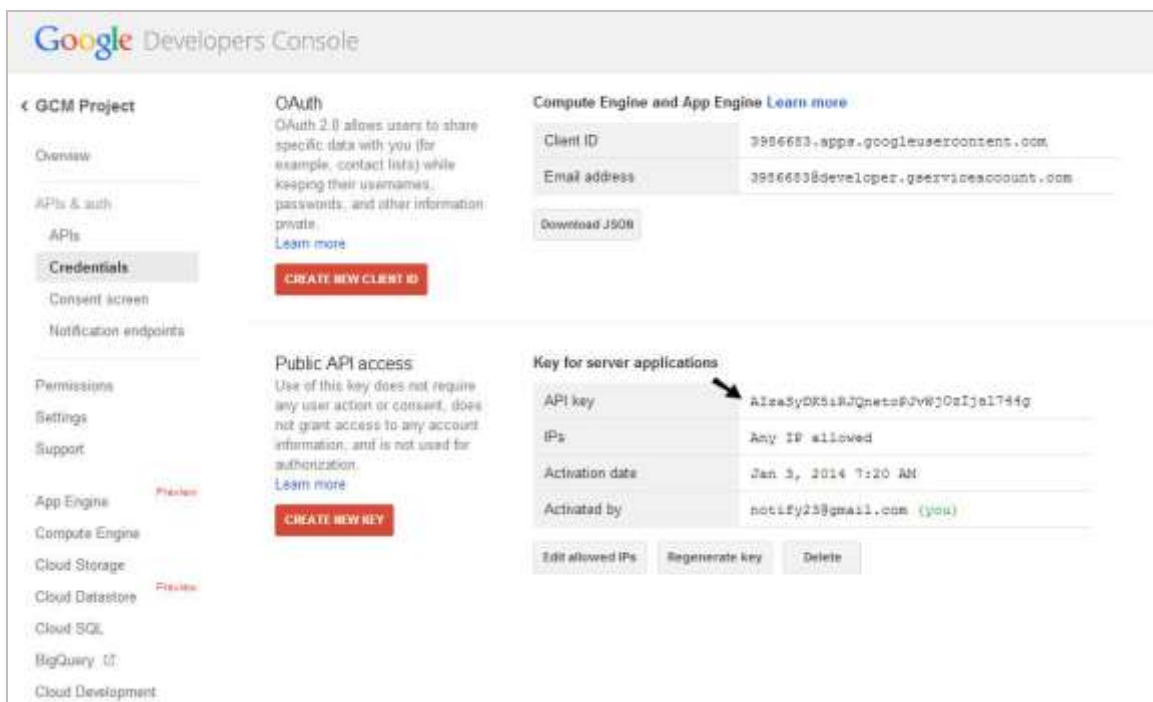


3. Select the **Server key** option on the pop-up.

4. On the pop-up, click **Create**.



5. Make a note of the **API key**. You will need this along with the *Sender ID* created in Step 1 to configure the *ZENworks Mobile Management* server for GCM service.





---

## Step 4: Register the Project ID with Google

The last step is to register the Project ID (Sender ID) for GCM Cloud Connection Service (CCS). Registering your Project ID whitelists it with Google and gives your server access to the GCM APIs.

Once you have submitted the CCS form, approval from Google can take from one day to several weeks, so you will want to submit the form as soon as you generate the Sender ID and API Key.

1. From a browser, navigate to <https://services.google.com/fb/forms/gcm>.
2. Fill out the form, entering your *Sender ID* in the **GCM Project ID** field.
3. Click **Submit** to send the form.

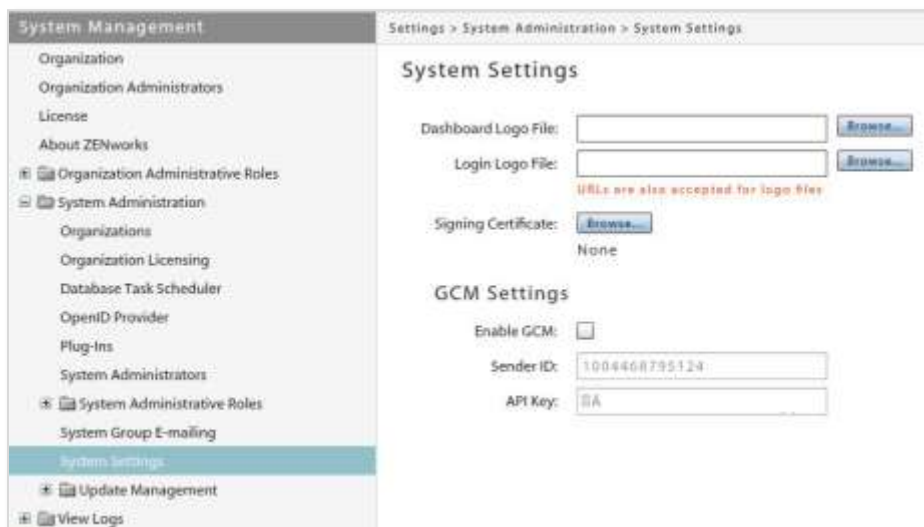
## Configure the Server for GCM Service

The GCM service must be enabled for the system on the *ZENworks Mobile Management* server under *System Settings*. GCM credentials (Sender ID and API Key) are also entered here.

Only one set of credentials is required per system, regardless of the number of organizations the system hosts. The GCM service can be turned on or left off for each individual organization.

### Enter your GCM credentials and enable the GCM service for the system

1. From the *ZENworks Mobile Management* dashboard, select **System > System Administration > System Settings**.
2. Check the box next to **Enable GCM**.



3. Enter the **Sender ID** and the **API Key** that were generated via the Google API Console.
4. Click **Save Changes**.

## Toggle the service on for each organization that will use GCM

1. From the *ZENworks Mobile Management* dashboard, select **System > Organization**.
2. Check the box next to **Use GCM** to turn on the service for the organization.

The screenshot shows the 'Organization Settings' page in the ZENworks Mobile Management interface. The left sidebar contains navigation options: Organization, Organization Administrators, License, About ZENworks, Organization Administrative Roles, System Administration, and View Logs. The main content area is titled 'Organization Settings' and contains the following fields and controls:

- Organization Name: \* ABC Co.
- Organization Alias: \* ABC Co.
- Contact Person: \* Jeremy Smith
- Contact Person's E-mail Address: \* jsmith@company.co
- Contact Person's Secondary E-mail: [Empty field]
- Contact Person's Phone Number: \* 3301234567 Ext: [Empty field]
- Contact Person's Secondary Phone: [Empty field] Ext: [Empty field]
- Send Welcome Letter to Users:
- Display EULA:   
Note: If this setting is enabled, the user must accept an End User License Agreement to complete enrollment of the ZENworks device app
- Maximum Number of Devices Per User: 3 [ +/- ]  
Note: Limits the number of devices a user can enroll. Select a maximum ranging from 1 to 99.
- SMTP Server: 192.168.2.3
- Signing Certificate: [Upload]
- Use GCM:
- APNs Certificate: [Edit] [Test Now]  
com.apple.mgmt.External.af853723-55b9-4018-8360-a62d0df167f7 (Enabled)
- APNs Expiration Date: Oct 11 2014 10:49AM

3. Click **Save Changes**.
4. To turn on GCM service for other organizations hosted by the system, switch to another organization and mark the **Use GCM** checkbox.

To switch organizations:

Select *System > System Administration > Organizations* and click the **Switch Organizations** button.