

Upgrading to NOWS SBE 2.0

Readme

May 9, 2008

- ♦ [Section 1, “Documentation,” on page 1](#)
- ♦ [Section 2, “Upgrading to NOWS SBE 2.0,” on page 1](#)
- ♦ [Section 3, “Documentation Conventions,” on page 12](#)
- ♦ [Section 4, “Legal Notices,” on page 12](#)

1 Documentation

The following sources provide information about Novell® Open Workgroup Small Business Edition 2.0:

- ♦ [Novell Open Workgroup Suite Small Business Edition Documentation \(http://www.novell.com/documentation/nows_sbe_20/index.html\)](http://www.novell.com/documentation/nows_sbe_20/index.html)
- ♦ [Installation Quick Start \(http://www.novell.com/documentation/nows_sbe_20/nows_quick_start/data/bookinfo.html\)](http://www.novell.com/documentation/nows_sbe_20/nows_quick_start/data/bookinfo.html)

2 Upgrading to NOWS SBE 2.0

This Readme explains how to upgrade to NOWS SBE 2.0.

Although NOWS SBE 2.0 includes many important changes, these changes are largely back-end changes. Effectively, upgrading to NOWS SBE 2.0 means upgrading from Novell Open Enterprise Server 1 (OES 1) to OES 2 and from SUSE® Linux Enterprise Server 9 (SLES 9) to SLES 10.

Additional information about the NOWS SBE 2.0 upgrade can be found in existing Novell OES 2 documentation. See [Novell Upgrading to OES 2 Linux at \(http://www.novell.com/documentation/oes2/inst_oes_lx/index.html?page=/documentation/oes2/inst_oes_lx/data/bujr8yu.html#bujr8yu\)](http://www.novell.com/documentation/oes2/inst_oes_lx/index.html?page=/documentation/oes2/inst_oes_lx/data/bujr8yu.html#bujr8yu).

2.1 Upgrading the Server

Use the following instructions to complete the upgrade applicable to your chosen installation source.

- ♦ [“Upgrading Using Physical Media or ISO” on page 2](#)
- ♦ [“Overwriting NOWS SBE 1.0 Settings” on page 3](#)
- ♦ [“Maintaining NOWS SBE 1.0 Settings” on page 3](#)
- ♦ [“Verifying and Customizing the Update Options in Installation Settings” on page 5](#)
- ♦ [“Accepting the Installation Settings” on page 6](#)
- ♦ [“Specifying Configuration Information” on page 7](#)

2.1.1 Upgrading Using Physical Media or ISO

- 1 Ensure that the server meets the upgrade requirements. See [Novell OES 2 documentation \(http://www.novell.com/documentation/oes2/inst_oes_1x/index.html?page=/documentation/oes2/inst_oes_1x/data/bu6wa3i.html\)](http://www.novell.com/documentation/oes2/inst_oes_1x/index.html?page=/documentation/oes2/inst_oes_1x/data/bu6wa3i.html).
- 2 Decide if you want your upgrade to completely overwrite your old system settings or maintain them. For system stability purposes it is recommended that you overwrite your existing settings. However, you have two options:
 - ♦ You can upgrade by completely overwriting your old system. Continue to **Step 3**.
 - ♦ You can upgrade while maintaining system settings, but you must manually install a package that reconfigures the existing configuration before continuing with the upgrade process.

WARNING: If you do not run this reconfiguring package, and you attempt to upgrade without overwriting, your installation might be corrupted.

To run the reconfiguring package:

1. Point your browser to the NOWS SBE 1.0 administration page. Log in using your administrative username and password.
2. In the *NOWS Server Updates* panel, click *Check Now*. If there are updates available, click *View Update Summary*.
3. The *Component Downloads and Updates* window appears. Under the *Novell* pane, there should be a package available for update called *NOWS SBE 1 to 2 Upgrade Tools*.
4. Carefully read the file information and warning in the package description section.

IMPORTANT: Using this package causes irreversible changes to your system that will make the system unusable until you perform the upgrade to NOWS SBE 2.0. Do not use this upgrade package until immediately before you are ready to begin the upgrade.

5. When you are ready, click *Install*.

A successful install is reported. Wait for the server operations to complete. This might take several minutes. The server then automatically shuts itself down.

6. Continue to **Step 3**.

- 3 Insert the *NOWS SBE 2.0* disc into the DVD-ROM drive of the server you want to upgrade to NOWS SBE 2, then reboot the server.

Depending on your hardware configuration, your computer might automatically boot to the DVD-ROM or you might need to select the DVD-ROM manually.

- 4 From the DVD boot menu, select the Installation option that matches your environment, but do not press Enter.

Choosing any of the three following upgrade options overwrites your existing NOWS SBE 1.0 settings. See **“Overwriting NOWS SBE 1.0 Settings” on page 3**.

- ♦ **Installation:** The normal installation mode. All default hardware functions are enabled.
- ♦ **Installation—ACPI Disabled:** If the normal installation fails, it might be because of the system hardware not supporting ACPI (advanced configuration and power interface). If this seems to be the case, use this option to install without ACPI support.

- ♦ **Installation—Local APIC Disabled:** If the normal installation fails, it might be because of the system hardware not supporting local APIC (advanced programmable interrupt controllers). If this seems to be the case, use this option to install without local APIC support.

If you are not sure, try *Installation—ACPI Disabled* or *Installation—Safe Settings* first.

Choosing the following option allows you to maintain your existing NOWS SBE 1.0 settings. See “[Maintaining NOWS SBE 1.0 Settings](#)” on page 3.

- ♦ **Installation—Safe Settings:** Boots the system with the DMA mode (for DVD-ROM drives) and power management functions disabled. Experts can also use the command line to enter or change kernel parameters.

5 Press Enter to begin the upgrade.

6 If you selected to overwrite your existing settings, continue with “[Overwriting NOWS SBE 1.0 Settings](#)” on page 3.

or

If you selected to maintain your existing settings, continue with “[Maintaining NOWS SBE 1.0 Settings](#)” on page 3.

2.1.2 Overwriting NOWS SBE 1.0 Settings

1 On the License Agreement page, click *Yes, I Agree to the License Agreement > Next*.

A Media Check window appears.

2 Click *Start Check*. The process takes a moment. If there are no problems with your media, click *Next*.

An Installation Settings window appears. The installer automatically chooses system-appropriate settings.

WARNING: All preexisting partitions are automatically set to be deleted, and new partitions are created in their place. All preexisting data will be lost.

3 If you want to continue and overwrite preexisting partitions, click *Accept*.

A Confirm Installation window appears. This is the last opportunity to make changes before the new installation is written to your hard disk.

4 Click *Install*.

The installation takes over an hour, depending on your hardware. After the installation finishes, an automated system configuration window appears.

5 Click *Next*. Your installation completes and your computer reboots.

6 After rebooting, the login dialogue box appears. This dialogue box provides a URL. Using another computer, enter the URL in your Web browser. You are directed to your new NOWS SBE 2.0 Administration page.

2.1.3 Maintaining NOWS SBE 1.0 Settings

1 Select a language, then click *Next*.

A Media Check window appears.

2 Click *Start Check*. The process takes a moment. If there are no problems with your media, click *Next*.

- 3 In the License Agreement window, click *Yes, I Agree to the License Agreement* then click *Next*.
- 4 When the *Installation Mode* screen displays, select *Update > Next*.
- 5 In the License Agreement window, click *Yes, I Agree to the License Agreement* then click *Next*.

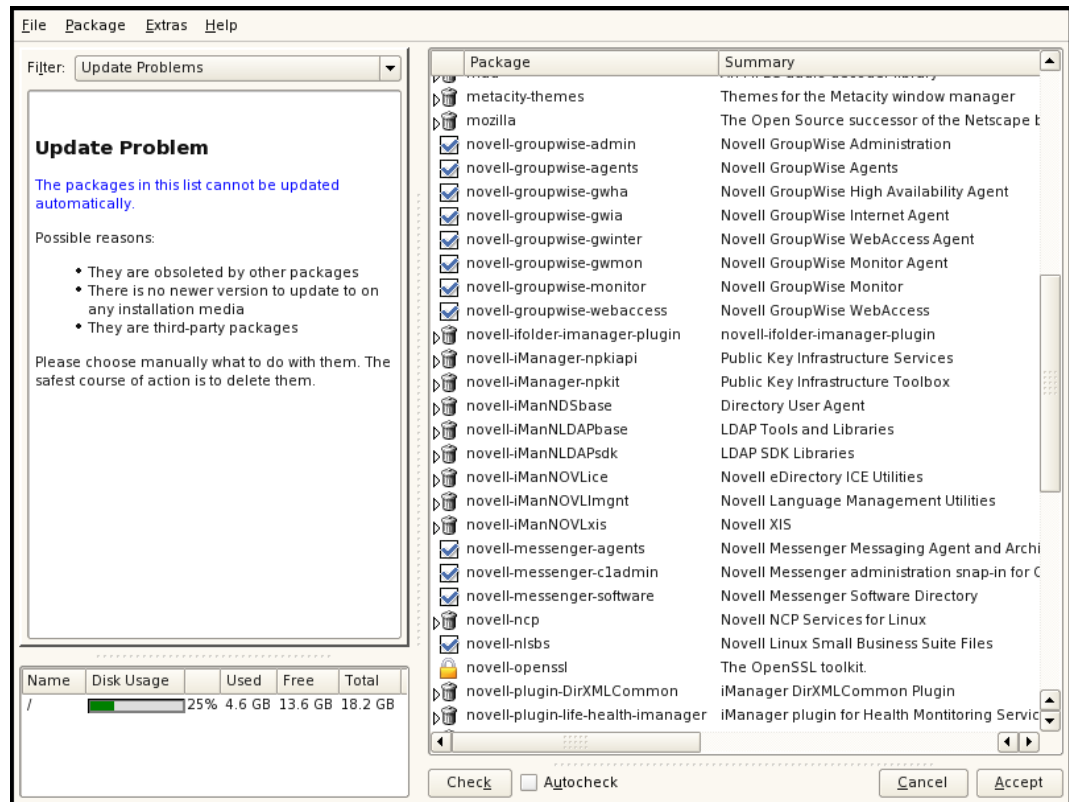
A *Select for Updates* window appears.

- 6 Select *SUSE Linux Enterprise Server 9*, then click *Next*.
- 7 After the OES 2 installation source has been added, a notification displays. Carefully read the notification.

This notification appears when the *Delete Unmaintained Packages* option is selected. Packages that are no longer supported or appear in a different form in the newer version of the software will be deleted, because they can cause compatibility issues.

- 8 Click *OK*.
- 9 An *Installation Settings* window appears. The proper settings should be selected automatically, but some changes need to be made. Click *Changes*.
- 10 In the pop-up menu that appears, select *Packages*.
- 11 In the package manager window that appears, manually change packages from being marked for deletion to being marked for installation.
 - ◆ To keep a package, right-click it and select *Keep*.
 - ◆ To delete a package, select it and click the trash can icon.

Keep the following checked packages:



- 12 When you finish, click *Accept*.

- 13** A *Changed Packages* window appears. Review the changes and click *Continue*.
- 14** If you want to customize installation settings, see [Section 2.1.4, “Verifying and Customizing the Update Options in Installation Settings,” on page 5.](#)

OR

If you want to accept the defaults, click *Accept*.

A Confirm Update window appears. This is the last opportunity to make changes before the new installation is written to your hard disk. For more information about accepting your settings, see [Section 2.1.5, “Accepting the Installation Settings,” on page 6.](#)

- 15** If you are ready to begin, click *Start Update*.
- The installation might take over an hour, depending on your hardware configuration.
- 16** After the install finishes, see [Section 2.1.6, “Specifying Configuration Information,” on page 7.](#)

2.1.4 Verifying and Customizing the Update Options in Installation Settings

IMPORTANT: To verify that previously installed services are selected for installation and to install any additional OES services during the upgrade, you must customize the Update Options in the Installation Settings dialog box.

This section assumes that you have completed [Step 1](#) through [Step 15](#) in [“Maintaining NOWS SBE 1.0 Settings” on page 3.](#) To verify or customize the software packages that are installed on the server:

- 1** If you want to install additional add-on products, click *Add-On Products* to add applications as necessary.
- 2** In the Installation Settings dialog box, click *Update Options*.
- 3** In the Update Options dialog box, accept the default selections, then click *Select Patterns*.

The default selections are:

- ♦ *Update with Installation of New Software and Features based on the Selection*
- ♦ *Delete Unmaintained Packages*

IMPORTANT: Because the *Delete Unmaintained Packages* option is selected, packages from any of the following existing products and services are marked for deletion:

- ♦ OES 1 services not included in OES 2, such as Novell iFolder[®] 2, eGuide, and Virtual Office.
- ♦ Other Novell products, such as GroupWise[®], ZENworks[®], and Identity Manager.
- ♦ SLES 9 services not included in SLES 10.
- ♦ Third-party products.

Consult the documentation for these services to see whether they are supported and how to update the packages from SLES 9 to SLES 10.

- 3a** Take one of the following actions as applicable:
- ♦ Delete these packages by clicking *Accept* on the Installation Summary page.
 - ♦ Keep specific packages by clicking the *Packages* link on the Installation Settings page, then changing each specific package's status to *Keep*.

- ◆ Keep all packages by clicking the *Update Options* link on the Installation Settings page, then deselecting the *Delete Unmaintained Packages* option.

Keeping any packages that are targeted for deletion requires expert knowledge about your system and requires you to resolve package dependency conflicts.

- 4 All of the OES Services patterns that were previously installed are selected by default. Do the following to verify the selections and customize your software selections:

- 4a Ensure that the patterns for the services you are upgrading are selected, then select the patterns for any new OES Services patterns that you might want also to install.

IMPORTANT: If you are upgrading to NOWS SBE 2.0, be sure that the NOWS SBE 2.0 install pattern is checked.

A description of each pattern displays to the left of the pattern when it is selected. For a description of OES Services patterns and the components selected with each pattern, see Table 2-3 at (http://www.novell.com/documentation/oes2/inst_oes_lx/index.html?page=/documentation/oes2/inst_oes_lx/data/bs89suo.html).

IMPORTANT: If you deselect a pattern after selecting it, you are instructing the installation program not to install that pattern and all of its dependent patterns. Rather than deselecting a pattern, click *Cancel* to cancel your software selections, then click the *Select Patterns* heading again to choose your selections again.

Selecting only the patterns that you want to install ensures that the patterns and their dependent patterns and packages are installed.

If you click *Accept*, then return to software pattern selection page, the selections that you made become your base selections and must be deselected if you want to remove them from the installation proposal.

Selecting a pattern automatically selects the other patterns that it depends on to complete the installation.

- 4b Click *Details* to view the details of your selection and add or remove specific packages for installation.
- 5 When you have selected the software components that you want to install, click *Accept*.
- 6 (Conditional) If the prompt for the AGFA Fonts license displays, read the agreement, then click *Accept*.
- 7 (Conditional) If the prompt for *Automatic Changes* displays, click *Continue*.
- 8 (Conditional) If prompted, resolve any dependency conflicts.
- 9 When the Update Options dialog box displays again, click *Accept*.
- 10 Continue with [Section 2.1.5, “Accepting the Installation Settings,”](#) on page 6.

2.1.5 Accepting the Installation Settings

This section assumes that you have completed [Step 1](#) through [Step 15](#) in “[Maintaining NOWS SBE 1.0 Settings](#)” on page 3.

- 1 Review the final Installation Summary page to ensure that you have all the Installation Settings you want. Make sure that it shows all the OES Services that you want to update and install.
- 2 After you have changed all the Installation Settings as desired, click *Accept*.
- 3 In the Confirm Update dialog box, click *Start Update*.

The base installation settings are applied and the packages are installed.

- 4 After the server reboots, continue with [Section 2.1.6, “Specifying Configuration Information,” on page 7](#).

2.1.6 Specifying Configuration Information

When the server reboots, you are required to complete the following configuration steps:

- ♦ [“Testing the Connection to the Internet” on page 7](#)
- ♦ [“Specifying Novell Customer Center Configuration Settings” on page 7](#)
- ♦ [“Updating the Server Software During the Upgrade” on page 9](#)
- ♦ [“Specifying Service Configuration Settings” on page 10](#)
- ♦ [“Specifying LDAP Configuration Settings” on page 10](#)
- ♦ [“Specifying eDirectory Configuration Settings” on page 11](#)
- ♦ [“Configuring Novell Open Enterprise Server Services” on page 11](#)

2.1.6.1 Testing the Connection to the Internet

On the *Test Internet Connection* page:

- 1 Select *Yes, Test Connection to the Internet*, then click *Next*.

Obtaining the latest SUSE release notes might fail at this point. If it does, view the log to verify that the network configuration is correct, then click *Next*.

If the network configuration is not correct, click *Back > Back* and fix your network configuration.

- 2 Or, you can skip this test by clicking *No, Skip This Test*; however, most OES services require a connection to the Internet.

Skipping this test also skips downloading release notes, configuring the Novell Customer Center, and updating online.

- 3 Continue with [“Specifying Novell Customer Center Configuration Settings” on page 7](#).

or

If you skipped the test, continue with [“Specifying LDAP Configuration Settings” on page 10](#) or [“Specifying eDirectory Configuration Settings” on page 11](#).

2.1.6.2 Specifying Novell Customer Center Configuration Settings

To receive support and updates for your OES 2 server, you need to register it in the Novell Customer Center. When the Novell Customer Center Configuration page is displayed, you have two options. You can choose to register the server during the installation or register it later.

To register the server during the upgrade:

- 1 On the Novell Customer Center Configuration configuration page, select all of the following options, then click *Next*.

Option	What it Does
<i>Configure Now</i>	Proceeds with registering this server and the SLES 10 SP1 and OES product in the Novell Customer center.
<i>Hardware Profile</i>	Sends the information to the Novell Customer Center about the hardware that you are installing SLES 10 SP1 and OES 2 on.
<i>Optional Information</i>	Sends optional information to the Novell Customer Center for your registration. For this release, this option doesn't send any additional information.
<i>Registration Code</i>	Makes the registration with activation codes mandatory.
<i>Regularly Synchronize with the Customer Center</i>	Keeps the installation sources for this server valid. It does not remove any installation sources that were manually added.

- 2 After you click *Next*, a message is displayed. Wait until this message disappears and the Manual Interaction Required page displays.
- 3 On the Manual Interaction Required page, note the information that you will be required to specify, then click *Continue*.
- 4 On the Novell Customer Center Registration page, specify the required information in the following fields:

Field	Information to Specify
<i>Email Address</i>	The e-mail address for your Novell Login account.
<i>Confirm Email Address</i>	The same e-mail address for your Novell Login account
<i>Activation Code for SLES Components (optional):</i>	Specify your permanent registration code for the SLES SP1 product. If you don't enter the permanent registration code now, a temporary code and organization are made for this server and the SLES SP1 product. This let you have updates for 15 days, until you register this system in the Novell Customer Center with the permanent activation code.
<i>Activation Code for OES Components (optional):</i>	Specify your permanent registration code for the OES product. If you don't enter the permanent registration code now, a temporary code and organization are made for this server and the OES 2 product. This lets you have updates for 15 days, until you register this system with the permanent activation code.
<i>System Name or Description (optional):</i>	The hostname for the system is specified by default. If you want to change this to a description for the Novell Customer Center, specify a description to identify this server.

- 5 Click *Submit*.
- 6 When the message to complete the registration displays, click *Continue*.
- 7 After you click *Continue*, a message is displayed with the Manual Interaction Required page. Wait until this message disappears and Novell Customer Center Configuration page displays with the message that `Your configuration was successful.`

- 8 When you see the message `Your configuration was successful` on the Novell Customer Center Configuration page, click *OK*.
- 9 Continue with “[Updating the Server Software During the Upgrade](#)” on page 9.

To register the server and get online updates after the installation is complete:

- 1 Click *Configure Later*.
- 2 Continue with “[Specifying Service Configuration Settings](#)” on page 10.
- 3 Register the server after the installation is complete by using the procedures in “[Registering the Server in the Novell Customer Center](#)” at (http://www.novell.com/documentation/oes2/inst_oes_lx/index.html?page=/documentation/oes2/inst_oes_lx/data/b9xir3a.html).

2.1.6.3 Updating the Server Software During the Upgrade

If you have a successful connection to the Internet and have registered the server in the Novell Customer Center, the server displays the Online Update dialog box. You can run the online update now or skip it and get updates later.

To get updates during the upgrade:

- 1 On the Online Updates page, click *Run Update*.
- 2 On the page that shows that updates are available, select the updates that you want to install, then click *Accept*. The check marks that are shown on the summary portion of the page are patches that have already been installed on your system.
- 3 When you see the message, `Installation finished` on the Patch Download and Installation page, click *Next*.
- 4 If the update makes changes to YaST, a message displays. Click *OK* to restart YaST.
- 5 Because the installation was interrupted, another message displays. Click *Yes* to continue with the installation.
- 6 The online update displays again with additional updates. If a patch has changes to the kernel, you might want to deselect it and install it later after the installation is complete. For procedures, see “[Updating an OES 2 Linux Server](#)” at (http://www.novell.com/documentation/oes2/inst_oes_lx/index.html?page=/documentation/oes2/inst_oes_lx/data/bxlu3xc.html).
If you do install patches that have changes to the kernel, click *OK* when you see the message `The kernel has been updated`. The system will reboot now then continue the installation.
- 7 Because the installation was interrupted again, another message displays. Click *Yes* to continue with the installation.
- 8 After all the patches are installed, continue with “[Specifying Service Configuration Settings](#)” on page 10.

To skip getting updates during the upgrade:

- 1 On the Online Update page, click *Skip Update*.
- 2 Continue with “[Specifying Service Configuration Settings](#)” on page 10.

2.1.6.4 Specifying Service Configuration Settings

NOTE: If a message appears indicating a previously installed and configured application, click *Upgrade*.

- 1 On the *Installation Settings* page, select or deselect the following options:

CA Management: You can accept the default settings or change the settings for a greater security level.

The certificate that is created is used by the Apache Web server. If you disable this configuration, each service that uses Apache does not work. The option to run the CA Management configuration is selected by default.

For more information about Certificate Authority Management, see in the “[Managing X.509 Certification](http://www.novell.com/documentation/sles10/sles_admin/data/cha_yast_ca.html)” in the *SUSE LINUX Enterprise Server 10 Installation and Administration Guide* (http://www.novell.com/documentation/sles10/sles_admin/data/cha_yast_ca.html).

Do Not Enable OpenLDAP Server: Because the Novell eDirectory™ LDAP server replaces the SLES 10 OpenLDAP server, you must not enable this option. It is disabled by default.

- 2 If you updated the server during the upgrade, the default settings for CA management loses the root password. You need to reset the password for `root`.
 - 2a On the Installation Settings page, click the *CA Management* link.
 - 2b On the Managing CA and Certificates page, click *Edit Default Settings*.
 - 2c On the Edit Default Settings page, specify the password for `root` in the *Password* and *Confirm Password* fields, then click *Next*.
- 3 When the setting are as desired, click *Next* and continue with one of the applicable procedures as follows:
 - ♦ “[Specifying LDAP Configuration Settings](#)” on page 10.
 - ♦ “[Specifying eDirectory Configuration Settings](#)” on page 11.

2.1.6.5 Specifying LDAP Configuration Settings

Many of the OES services require eDirectory. If eDirectory was not selected as a product to upgrade or install but other OES services that do require LDAP services were installed, the LDAP Configuration service displays, expecting you to complete the required information.

To specify the required information on the Configured LDAP Server page:

- 1 In the *eDirectory Tree Name* field, specify the name for the existing eDirectory tree that you are installing this server into.
- 2 In the *Admin Name and Context* field, specify the name and context for user Admin on the existing tree.
- 3 In the *Admin Password Name* field, specify a password for user for user Admin on the existing tree.
- 4 Add the LDAP servers that you want the services on this server to use. The servers that you add should hold the master or a read/write replica of eDirectory. Do the following for each server you want to add.
 - 4a Click *Add*.

- 4b** In the next dialog box, specify the following information for the server to add:
 - ♦ IP Address
 - ♦ LDAP port and secure LDAP port
- 5** Click *Add*.
- 6** When all the LDAP servers that you want to specify are listed, click *Next*.
- 7** Verify that the Novell Open Enterprise Server Configuration page displays the settings that you expected, then click *Next*.
- 8** Continue with “[Configuring Novell Open Enterprise Server Services](#)” on page 11.

2.1.6.6 Specifying eDirectory Configuration Settings

If eDirectory is installed on the server in OES 1, do the following when this dialog box is displayed.

- 1** Click *Upgrade*.
- 2** In the eDirectory Upgrade dialog box, click *Yes*.
- 3** In the eDirectory Upgrade-Existing Server Information dialog box, specify the context and password information for the user Admin and browse to or specify the path to the `nds.conf` file. Then click *Next*.
- 4** In the Novell Modular Authentication Service dialog box, accept the default selections or add new methods by selecting them, then click *Next*.
- 5** Continue with “[Configuring Novell Open Enterprise Server Services](#)” on page 11.

2.1.6.7 Configuring Novell Open Enterprise Server Services

- 1** After you complete the LDAP configuration or eDirectory configuration, the *Novell Open Enterprise Server Configuration* summary page is displayed, showing all the OES components you updated and installed and their configuration settings. Review the setting for each component and click the component heading to change any settings.

When specifying the configuration information for OES services, see the information in “[Guidelines for Configuring OES 2 Linux Components](http://www.novell.com/documentation/oes2/inst_oes_lx/index.html?page=/documentation/oes2/inst_oes_lx/data/bacxet2.html)” at (http://www.novell.com/documentation/oes2/inst_oes_lx/index.html?page=/documentation/oes2/inst_oes_lx/data/bacxet2.html).

- 2** When you are satisfied with the settings for each component, click *Next*.
- 3** When confirming the OES component configurations, you might receive the following error:

The proposal contains an error that must be resolved before continuing.

If this error is displayed, check the summary list of configured products and look for a message immediately below each product heading that indicates the product or service needs to be configured. If you are running the YaST graphical interface, the text is red.

For example, if you have selected Linux User Management in connection with other OES products or services, you might see a message similar to the following:

Linux User Management needs to be configured before you can continue or disable the configuration.

If you see a message like this, do the following:

- 3a** On the summary page, click the heading for the component.

3b Supply the missing information in each configuration page.

When specifying the configuration information for OES services during the upgrade, see the information in “Guidelines for Configuring OES 2 Linux Components” at (http://www.novell.com/documentation/oes2/inst_oes_lx/index.html?page=/documentation/oes2/inst_oes_lx/data/bacxet2.html).

When you have finished configuring a component, you are returned to the *Novell Open Enterprise Server Configuration* summary page.

3c If you want to skip the configuration of a specific component and configure it later, click *Enabled* in the *Configuration is enabled* status to change the status to *Configuration is disabled*.

If you change the status to *Configuration is disabled*, you must configure the OES components after the installation is complete. See “Installing or Configuring OES 2 Services on an Existing OES 2 Linux or SLES 10 SP 1 Server” at (http://www.novell.com/documentation/oes2/inst_oes_lx/index.html?page=/documentation/oes2/inst_oes_lx/data/b9jm24r.html).

4 After resolving all product configuration problems, click *Next* to proceed with the configuration of all components.

5 After rebooting, the login dialog box appears. This dialog box provides a URL. Using another computer, enter the URL in your Web browser. You are directed to your new NOWS SBE 2.0 Administration page.

3 Documentation Conventions

In this documentation, a greater-than symbol (>) is used to separate actions within a step and items in a cross-reference path.

A trademark symbol (®), TM, etc.) denotes a Novell trademark; an asterisk (*) denotes a third-party trademark

4 Legal Notices

Novell, Inc. makes no representations or warranties with respect to the contents or use of this documentation, and specifically disclaims any express or implied warranties of merchantability or fitness for any particular purpose. Further, Novell, Inc. reserves the right to revise this publication and to make changes to its content, at any time, without obligation to notify any person or entity of such revisions or changes.

Further, Novell, Inc. makes no representations or warranties with respect to any software, and specifically disclaims any express or implied warranties of merchantability or fitness for any particular purpose. Further, Novell, Inc. reserves the right to make changes to any and all parts of Novell software, at any time, without any obligation to notify any person or entity of such changes.

Any products or technical information provided under this Agreement may be subject to U.S. export controls and the trade laws of other countries. You agree to comply with all export control regulations and to obtain any required licenses or classification to export, re-export, or import deliverables. You agree not to export or re-export to entities on the current U.S. export exclusion lists or to any embargoed or terrorist countries as specified in the U.S. export laws. You agree to not use deliverables for prohibited nuclear, missile, or chemical biological weaponry end uses. Please refer to the [Novell International Trade Services Web page \(http://www.novell.com/info/exports/\)](http://www.novell.com/info/exports/) for

more information on exporting Novell software. Novell assumes no responsibility for your failure to obtain any necessary export approvals.

Copyright © 2007-2008 Novell, Inc. All rights reserved. No part of this publication may be reproduced, photocopied, stored on a retrieval system, or transmitted without the express written consent of the publisher.

Novell, Inc. has intellectual property rights relating to technology embodied in the product that is described in this document. In particular, and without limitation, these intellectual property rights may include one or more of the U.S. patents listed on the [Novell Legal Patents Web page \(http://www.novell.com/company/legal/patents/\)](http://www.novell.com/company/legal/patents/) and one or more additional patents or pending patent applications in the U.S. and in other countries.

For Novell trademarks, see [the Novell Trademark and Service Mark list \(http://www.novell.com/company/legal/trademarks/tmlist.html\)](http://www.novell.com/company/legal/trademarks/tmlist.html).

All third-party trademarks are the property of their respective owners.