

SecureWave
Safeguarding Tomorrow

**Sanctuary Device
Control Stand-Alone
Decryption Tool**

www.securewave.com



Liability Notice

Information in this manual may change without notice and does not represent a commitment on the part of SecureWave.

SecureWave, S.A. provides the software described in this manual under a license agreement. The software may only be used in accordance with the terms of the contract.

No part of this publication may be reproduced, transmitted, or translated in any form or by any means, electronic, mechanical, manual, optical, or otherwise, without the prior written permission of SecureWave.

SecureWave claims copyright in this program and documentation as an unpublished work, revisions of which were first licensed on the date indicated in the foregoing notice. Claim of copyright does not imply waiver of other rights by SecureWave.

Copyright 2000-2007© SecureWave, S.A.
All rights reserved.

Trademarks

Sanctuary is a trademark of SecureWave, S.A.
All other trademarks recognized.

SecureWave, S.A.
Atrium Business Park
23, rue du Puits Romain
L-8070 Bertrange
Luxembourg

Phone: +352 265 364-11 (add prefix 011 when calling from USA or Canada)
Fax: +352 265 364-12 (add prefix 011 when calling from USA or Canada)
Web: www.securewave.com

Technical Support hours are Monday to Friday, 8:00 to 20:00 CET/CEST in Europe and 8:00 AM to 8:00 PM ET/EDT in North America.

You can contact our technical support team by calling:

+352 265 364 300 (International),
+1-877-713-8600 (US Toll Free),
+44-800-012-1869 (UK Toll Free)

or by sending an email to support@securewave.com

Published on: July 2007

Contents

Introduction	3
Additional information	3
Symbol explanation	4
Typefaces	4
Keyboard conventions	4
Support and contact information	4
The Sanctuary Device Control Stand-Alone Decryption Tool	5
Introduction	5
Exporting keys	5
Accessing a media encrypted by Sanctuary Device Control from a non-protected computer	5
Introduction	5
Accessing the encrypted media from a non-protected machine	6
Installing Sanctuary Device Control Stand-Alone Decryption Tool	7
Table of Figures	11
Index of Tables	13
Index	15

Introduction

Additional information

In addition to this quick setup and configuration guide, SecureWave also provides the following:

- > Detailed administrator guides are provided with the installation CD
- > Product specific help is available with your licensed Sanctuary products
- > Current information is also available on our web site at: further information is available on our web site at:
www.securewave.com

In this regularly updated Web site, you can find:

- > The latest software upgrades and patches (for registered users)
- > The very latest troubleshooting tips and answers to Frequently Asked Questions (FAQ)
- > Other general support material that you may find useful
- > New information about Sanctuary
- > Our Knowledge Base (KB), with FAQ (Frequent Asked Questions) and practical information of your every day use of Sanctuary solutions

You also have the following e-books available:



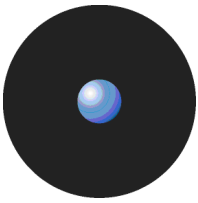
Publication name	Publication type
Sanctuary's Quick Setup and Configuration Guide	 Printed booklet
Sanctuary's Architecture Guide	 eBook
Sanctuary's Setup Guide	
Sanctuary Device Control Administrator's Guide	
Sanctuary Application Control Suite Administrator's Guide	
Installing Sanctuary Application Control Terminal Services Edition on Citrix Environments	
Sanctuary Device Control Stand-Alone Decryption Tool	
Sanctuary's WEPOS & Windows XPe Setup Guide	
Sanctuary's Help file	
Understanding Sanctuary Device Control's Encryption Schemas	
Readme file	
Licence file	

Table 1: Available publications



Symbol explanation

We use the following symbols to emphasize important points about the information you are reading throughout this guide:



Special note. This symbol identifies additional information about the topic reading. These notes may also relate to other parts of the system or be points that need particular attention.



Time saver. This symbol describes 'short-cuts' or tips that may save you time.



Caution. This symbol identifies potential risk when working with certain aspects of Sanctuary, e.g. loss of data or potential problems with the operation of your system.

Typefaces

We use the following typefaces to differentiate between certain types of contents throughout this guide:

Italic Represent fields, menu options, and cross-references

Fixed width Shows messages or commands that should be typed at the command prompt

SMALL CAPS Represents buttons you select

Keyboard conventions

A plus sign between two keyboard keys means that you must press those keys at the same time. For example, ALT+R means that you hold down the ALT key while you press R.

A comma between two or more keys means you must press each of them consecutively. For example 'Alt,R,U' means that you press each key in sequence.

Support and contact information

If you still have a question after reviewing the online help, documentation, or SecureWave knowledge base, you can contact your SecureWave customer support team by telephone, fax, email, or regular mail.

Technical Support hours are Monday to Friday, 8:00 to 20:00 CET/CEST in Europe and 8:00 AM to 8:00 PM ET/EDT in North America.

You can contact our technical support team by calling:

+352 265 364 300 (International),
+1-877-713-8600 (US Toll Free),
+44-800-012-1869 (UK Toll Free)

or by sending an email to support@securewave.com

Alternatively, you can write to customer support at:

SecureWave, S.A.
Atrium Business Park
23, rue du Puits Romain
L-8070 Bertrange
Luxembourg

The Sanctuary Device Control Stand-Alone Decryption Tool

Introduction

There may be situations where data on a specifically authorized (encrypted) media would need to be accessed from a machine that is not protected by Sanctuary Device Control. The purpose of the Sanctuary Device Control Stand-Alone Decryption Tool is to allow access to the encrypted media from a non-protected computer.



It is possible to exchange device-specific encrypted media between two computers members of different domains or organizations, on which the Sanctuary Client Driver is installed, using our Easy Exchange encryption method.

Exporting keys

There are two different ways to export encryption keys. The most secure way is to export the disk encryption keys on a file and send them by a different channel (using e-mail for example) to the person that needs to access the encrypted media outside the company. The second way is to export the keys on the encrypted media itself. This second method is significantly less secure as the level of difficulty to access data will be directly linked to the media password complexity.

Accessing a media encrypted by Sanctuary Device Control from a non-protected computer.

Introduction

To access an encrypted media on machines where the Sanctuary Client Driver is not installed, a user will have to use the Sanctuary Device Control Stand-Alone Decryption Tool. The user needs the following:

- > Have the Sanctuary Device Control Stand-Alone Decryption Tool installed on his computer. This tool can be found on the Sanctuary CD under the SADEC folder.
- > Please refer to *Installing Sanctuary Device Control Stand-Alone Decryption Tool* on page 7 for more details.



The Sanctuary Device Control Stand-Alone Decryption Tool can only be installed on Windows 2000 Professional, Windows XP Professional and Windows 2003.

- > The user needs the encrypted device plugged on his computer.
- > If the disk encryption keys were not stored on the device, he will need the encryption keys file.
- > And finally the user will need the password to access the device and/or the encrypted key file.



Accessing the encrypted media from a non-protected machine

1. Install the Sanctuary Device Control Stand-Alone Decryption Tool.
2. Attach the device to the computer.
3. In Windows Explorer, select the *Unlock media...* entry from the contextual menu of the encrypted drive.

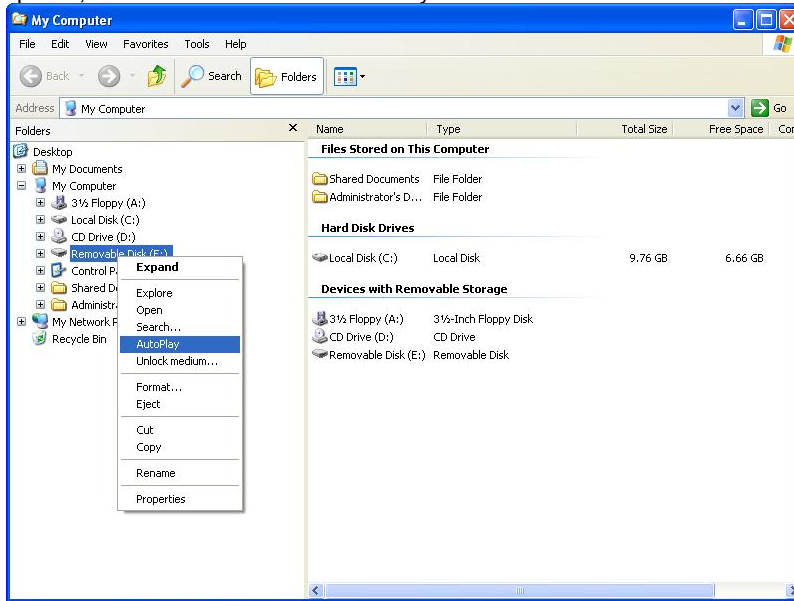


Figure 1: Unlocking the media

4. If the disk encryption key was exported on the encrypted media, click on MEDIA. If the key was exported on a file click FOLDER and browse for the file using the ellipsis button (...)

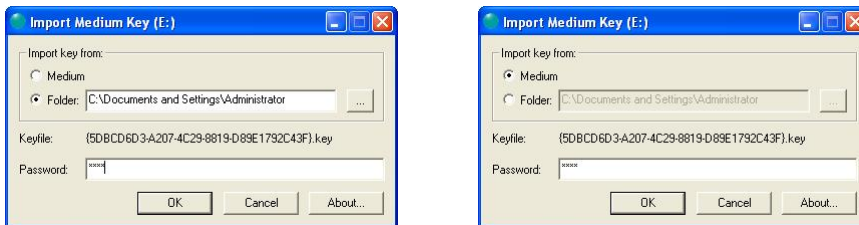


Figure 2: Importing data

5. Type in the media password in the *Password* field.
6. Click Ok, providing you have entered the right key and media password, the media should be unlocked and accessible using Windows Explorer.



All data copied from the media to the computer hard drive will be decrypted during the copy operation and will be copied on the hard disk drive in unencrypted format. Make sure you store the files copied to a secure location. All data copied from the hard drive to the media is encrypted during the copy operation and copied on the removable media in encrypted format.

Installing Sanctuary Device Control Stand-Alone Decryption Tool

This chapter explains how to install the Sanctuary Device Control Stand-Alone Decryption Tool onto the client computers you want to control.

To install the Sanctuary Device Control Stand-Alone Decryption Tool on your client computers, follow the steps below:

1. Log on to the client computer with administrative rights.
2. Close all programs running on the computer.
3. Select the SADEC folder on the Sanctuary CD-ROM or navigate to the network share where the Sanctuary Device Control Stand-Alone Decryption Tool setup files are located. Run SETUP.EXE. The Setup program launches the MSI installer.
4. When this is complete, the *Welcome* dialog is displayed. Click on NEXT to continue.



Figure 3: SADEC installation: welcome screen

5. The *License Agreement* is displayed in the next dialog. Copyright and international treaties protect the Sanctuary Device Control software. Read the license agreement carefully, and providing you agree with its terms, click on I ACCEPT and then click NEXT to continue.

If you do not agree with its terms, click on I DO NOT ACCEPT to terminate *Setup* without installing Sanctuary Device Control Stand-Alone Decryption Tool.



Installing Sanctuary Device Control Stand-Alone Decryption Tool



Figure 4: SADEC installation: license agreement

6. You now have the chance to select the target directory where SADEC will be installed:



Figure 5: SADEC installation: select installation folder

Click on CHANGE and select the installation folder (if different from the default one).

7. Click on INSTALL to start the installation. This will take about 2 minutes depending on the hardware in use.

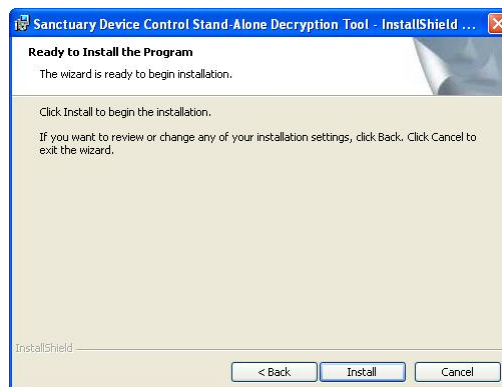
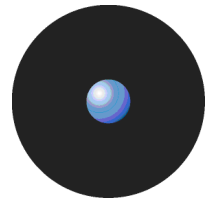


Figure 6: SADEC installation: ready to install



8. The Sanctuary Device Control Stand-Alone Decryption Tool setup will then prompt you to reboot one final time.



Figure 7: SADEC installation: restart message

Table of Figures

Figure 1: Unlocking the media	6
Figure 2: Importing data.....	6
Figure 3: SADEC installation: welcome screen	7
Figure 4: SADEC installation: license agreement	8
Figure 5: SADEC installation: select installation folder	8
Figure 6: SADEC installation: ready to install	8
Figure 7: SADEC installation: restart message.....	9

Index of Tables

Table 1: Available publications	3
---------------------------------------	---

Index

A

Accessing a media encrypted by Sanctuary Device Control from a non-protected computer; 5, 6
Additional Information; 3

C

Contact Information; 4

E

Encryption
 Export Keys; 5
 Password; 6
Explanation of Symbols; 4

I

Installing; 5, 7

S

SADEC; 5
Sanctuary Device Control Stand-Alone Decryption Tool
 Installing; 7
Sanctuary Device Control Stand-Alone Decryption Tool; 5

U

Unlock media; 6