

# **AdminStudio 10.0 SP2 ZENworks Edition**

## **Installation Guide**

# Legal Information

**Book Name:** AdminStudio 10.0 SP2 ZENworks Edition Installation Guide  
**Part Number:** ADS-1000-IGZSP2  
**Product Release Date:** September 15, 2011

## Copyright Notice

Copyright © 2001–2011 Flexera Software, Inc. and/or InstallShield Co. Inc. All Rights Reserved.

This product contains proprietary and confidential technology, information and creative works owned by Flexera Software, Inc. and/or InstallShield Co. Inc. and their respective licensors, if any. Any use, copying, publication, distribution, display, modification, or transmission of such technology in whole or in part in any form or by any means without the prior express written permission of Flexera Software, Inc. and/or InstallShield Co. Inc. is strictly prohibited. Except where expressly provided by Flexera Software, Inc. and/or InstallShield Co. Inc. in writing, possession of this technology shall not be construed to confer any license or rights under any Flexera Software, Inc. and/or InstallShield Co. Inc. intellectual property rights, whether by estoppel, implication, or otherwise.

All copies of the technology and related information, if allowed by Flexera Software, Inc. and/or InstallShield Co. Inc., must display this notice of copyright and ownership in full.

## Trademarks

Flexera Software, AdminStudio, FlexEnabled, FLEXIm, FlexNet, FlexCertified, FlexNet Connect, FlexNet Connector, FlexNet Manager, FlexNet Publisher, Globetrotter, InstallShield, InstallShield Developer, InstallShield DevStudio, InstallShield Professional, and Package For The Web are registered trademarks or trademarks of Flexera Software, Inc. and/or InstallShield Co. Inc. in the United States of America and/or other countries. All other brand and product names mentioned herein are the trademarks and registered trademarks of their respective owners.

## Restricted Rights Legend

The software and documentation are “commercial items,” as that term is defined at 48 C.F.R. §2.101, consisting of “commercial computer software” and “commercial computer software documentation,” as such terms are used in 48 C.F.R. §12.212 or 48 C.F.R. §227.2702, as applicable. Consistent with 48 C.F.R. §12.212 or 48 C.F.R. §227.2702-1 through 227.7202-4, as applicable, the commercial computer software and commercial computer software documentation are being licensed to U.S. government end users (A) only as commercial items and (B) with only those rights as are granted to all other end users pursuant to the terms and conditions set forth in the Flexera Software, Inc. standard commercial agreement for this software. Unpublished rights reserved under the copyright laws of the United States of America.

---

# Contents

<b>1</b>	<b>AdminStudio 10.0 SP2 ZENworks Edition Installation Guide</b>	<b>5</b>
	<b>Components &amp; Editions</b>	<b>6</b>
	ZENworks Limited Editions	6
	Standard, Professional, and Enterprise Editions and Add-On Packs	8
	<b>Contacting Us</b>	<b>11</b>
<b>2</b>	<b>AdminStudio 10.0 SP2 System Requirements</b>	<b>13</b>
	<b>Hardware and Software Requirements</b>	<b>13</b>
	<b>ZENworks Edition Requirement: Connection to a ZENworks Server</b>	<b>14</b>
<b>3</b>	<b>Installing AdminStudio 10.0 SP2 ZENworks Edition</b>	<b>15</b>
<b>4</b>	<b>Activating Your Product</b>	<b>21</b>
	<b>About Activation</b>	<b>22</b>
	<b>Activating AdminStudio ZENworks Edition</b>	<b>22</b>
	<b>Activation Troubleshooting</b>	<b>26</b>
	General Troubleshooting	26
	Offline Activation Via Email	27
	Activating Products Silently	28
	Reactivating AdminStudio on a Different Computer	29
<b>5</b>	<b>Evaluating AdminStudio</b>	<b>31</b>
	<b>Evaluating AdminStudio Enterprise Edition Client Tools</b>	<b>31</b>
	<b>Evaluating the AdminStudio Enterprise Server Web Tools</b>	<b>33</b>

**6 Upgrading Your Product Edition ..... 35**

**Index ..... 37**

# AdminStudio 10.0 SP2 ZENworks Edition Installation Guide

Congratulations on choosing AdminStudio, the premier solution for preparing reliable, manageable applications and patches for enterprise use. Using AdminStudio to standardize the way you package, test, distribute, and manage your applications ensures higher quality software deployments that save you time and lower TCO.

From large corporations managing hundreds of applications to small companies looking for a simple way to migrate software to the Windows Installer (MSI) standard, AdminStudio makes it easy for any organization to maintain reliable software.

- **Migrating Applications to Windows Installer**—AdminStudio's automated, intelligent tools make it easy to quickly convert any application to MSI and take advantage of cost-saving benefits such as self-healing, rollback, and install-on-demand.
- **Centrally Managing Resources and Packaging Projects**—Besides powerful software packaging technology, enterprises looking to standardize packaging across their organization need centralized management tools. AdminStudio has the enterprise-class functionality organizations need to effectively manage all the people, projects, and data involved in the packaging process.

Information about installing the AdminStudio ZENworks Edition is presented in the following sections:

**Table 1-1 • Installing AdminStudio 10.0 SP2 ZENworks Edition**

Topic	Content
<b>AdminStudio 10.0 SP2 System Requirements</b>	Lists the hardware and software requirements for the components of the AdminStudio client tools.
<b>Installing AdminStudio 10.0 SP2 ZENworks Edition</b>	Explains how to install AdminStudio ZENworks Edition.
<b>Activating Your Product</b>	Explains how to activate your AdminStudio serial number, and provides activation troubleshooting information.

**Table 1-1** • Installing AdminStudio 10.0 SP2 ZENworks Edition

Topic	Content
<b>Evaluating AdminStudio</b>	Explains how to evaluate the AdminStudio Enterprise Edition client tools and the AdminStudio Enterprise Server Web tools, and also how to activate your product after purchasing a serial number.
<b>Upgrading Your Product Edition</b>	Explains how to use AdminStudio's built-in upgrade capability to activate features in a higher Edition without re-installing the application.

## Components & Editions

In addition to the ZENworks Limited Editions, AdminStudio 10.0 SP2 is also available in Standard, Professional, and Enterprise Editions, and also offers several add-on packs. This section lists the AdminStudio components that are included in each Edition and describes the add-on packs.

- [ZENworks Limited Editions](#)
- [Standard, Professional, and Enterprise Editions and Add-On Packs](#)

## ZENworks Limited Editions

AdminStudio provides two ZENworks Limited Editions:

- [ZENworks Edition for ZENworks 10 and 11 Users](#)
- [ZENworks Edition for ZENworks 7 Users](#)

### ZENworks Edition for ZENworks 10 and 11 Users

The AdminStudio 10.0 SP2 ZENworks Edition for Novell ZENworks Configuration Manager (ZCM) 10 and 11 customers includes all of the features of AdminStudio Standard Edition, the basic version of the AdminStudio solution. AdminStudio Standard Edition provides a cost-effective way for software packagers to migrate applications to Windows Installer. It enables control over MSI packaging, customization, and distribution activities, helping organizations rapidly and reliably package and deploy applications. For more information, see [Standard Edition](#).

## ZENworks Edition for ZENworks 7 Users

AdminStudio 10.0 SP2 ZENworks Edition for ZENworks 7 users is a customized version of AdminStudio that allows system administrators to rapidly prepare reliable Windows Installer (.msi) software packages for distribution across their enterprises. AdminStudio enables companies to take full advantage of the benefits of Windows Installer and reduces total cost of ownership by simplifying the installation, customization, and management of applications. AdminStudio 10.0 SP2 ZENworks Edition for ZENworks 7 users includes the following components:

- **Repackager**—Use to repackage and convert Novell ZENworks projects (.axt/.aot) into Windows Installer packages. Full Repackager functionality is provided, except for InstallScript MSI Conversion.
- **Distribution Wizard (Customized for ZENworks)**—Prepare a Windows Installer package for distribution via ZENworks desktop application distribution or via ZENworks server distribution.
- **Tuner**—You can use Tuner to quickly create transforms (.mst), including Response File transforms, to customize software already in the Windows Installer format and automatically validate that any changes conform to Microsoft guidelines.



---

**Note** • For more information, see **About AdminStudio ZENworks Edition** in the AdminStudio 10.0 Help Library.


## Standard, Professional, and Enterprise Editions and Add-On Packs

AdminStudio 10.0 SP2 is available in Standard, Professional, and Enterprise Editions. You also have the option of purchasing an additional Virtualization Pack and Application Compatibility Pack. Also, functionality varies depending upon whether you have purchased the Per Admin pricing model or the Per Desktop pricing model

Edition	AdminStudio	Virtualization Pack	Application Compatibility Pack
Standard	<p><b>Tools</b></p> <ul style="list-style-type: none"><li>• Repackager</li><li>• Distribution Wizard</li><li>• FlexWrap</li><li>• InstallShield 2011</li><li>• Tuner</li><li>• Application Isolation Wizard</li></ul> <p><b>Functionality</b></p> <ul style="list-style-type: none"><li>• Windows Installer repackaging</li><li>• Windows Installer customization</li><li>• Preparation for distribution</li></ul>	<p><b>Tools</b></p> <ul style="list-style-type: none"><li>• Automated Application Converter (Single Application Version)</li><li>• Virtual Package Editor</li><li>• Microsoft App-V Assistant</li><li>• ThinApp Assistant</li><li>• Citrix Assistant</li></ul> <p><b>Functionality</b></p> <ul style="list-style-type: none"><li>• Convert to virtual applications</li><li>• App-V package editing</li></ul>	N/A

Edition	AdminStudio	Virtualization Pack	Application Compatibility Pack
<b>Professional</b>	<p><b>Tools</b></p> <p>Same as <b>Standard</b>, plus:</p> <ul style="list-style-type: none"> <li>• ConflictSolver</li> <li>• Application Manager</li> <li>• OS Snapshot Wizard</li> <li>• QualityMonitor</li> <li>• Predeployment Test</li> </ul> <p><b>Functionality</b></p> <p>Same as <b>Standard</b>, plus:</p> <ul style="list-style-type: none"> <li>• Application management</li> <li>• Testing, validation, and conflict testing</li> <li>• Standard reporting</li> </ul>	<p><b>Tools</b></p> <p>Same as <b>Standard</b>, plus:</p> <ul style="list-style-type: none"> <li>• Automated Application Converter (Single Application Version) with Virtualization Suitability Testing</li> </ul> <p><b>Functionality</b></p> <p>Same as <b>Standard</b>, plus:</p> <ul style="list-style-type: none"> <li>• Test for virtualization suitability</li> <li>• Store App-V data in Application Manager</li> <li>• App-V package testing, validation, and conflict testing</li> <li>• Automated conversion of legacy packages to Windows Installer</li> </ul>	<p><b>Tools &amp; Functionality</b></p> <p><b>Compatibility Solver</b> with the following functionality:</p> <ul style="list-style-type: none"> <li>• Project-level compatibility assessment and cost/effort reporting for all applications</li> <li>• Application testing and basic reporting for Windows 7 (32- and 64-bit versions)</li> <li>• Auto-fixing for Windows 7</li> </ul>
<b>Professional Complete</b>	Includes Professional Edition with both the <b>Virtualization Pack</b> and the <b>Application Compatibility Pack</b> .		

Edition	AdminStudio	Virtualization Pack	Application Compatibility Pack
<b>Enterprise (Per Admin)</b>	<b>Tools</b> Same as <b>Professional</b> , plus: <ul style="list-style-type: none"> <li>PackageExpert</li> <li>OS Security Patch Wizard</li> <li>Job Manager</li> <li>Report Center</li> <li>Software Repository</li> <li>Security Console</li> </ul> <b>Functionality</b> Same as <b>Professional</b> , plus: <ul style="list-style-type: none"> <li>Application Readiness Dashboard</li> <li>Process and workgroup management features</li> </ul>	<b>Tools</b> Same as <b>Professional</b> , plus: <ul style="list-style-type: none"> <li>Automated Application Converter (Multiple Application Version) with Suitability Testing</li> </ul> <b>Functionality</b> Same as <b>Professional</b> , plus: <ul style="list-style-type: none"> <li>Automated conversion of multiple packages to virtual applications</li> <li>Automated conversion of multiple legacy packages to Windows Installer</li> <li>Application Readiness Dashboard (Including Virtualization Reports)</li> </ul>	<b>Tools &amp; Functionality</b> All of the <b>Compatibility Solver</b> functionality available in Professional, plus: <ul style="list-style-type: none"> <li>Detailed compatibility assessment reports, including post-fixing results and status by packages</li> <li>Application testing and reporting for Windows 7 (32- and 64-bit versions), and Windows Server 2008 and 2008 R2</li> <li>Auto-fixing for Windows Server 2008 and 2008 R2</li> </ul>
<b>Enterprise (Per Admin) Complete</b>	Includes Enterprise Edition (Per Admin) with both the <b>Virtualization Pack</b> and the <b>Application Compatibility Pack</b> .		
<b>Enterprise (Per Desktop)</b>	<b>Tools &amp; Functionality</b> Same as <b>Enterprise (Per Admin)</b>	<b>Tools &amp; Functionality</b> Same as <b>Enterprise (Per Admin)</b>	<b>Tools &amp; Functionality</b> All of the <b>Compatibility Solver</b> functionality available in <b>Enterprise (Per Admin)</b> , plus: <ul style="list-style-type: none"> <li>Testing can be done on groups of applications at a time</li> </ul> <b>Web Application Compatibility Pack (Optional Add-On)</b> <ul style="list-style-type: none"> <li>Test compatibility of web applications with Internet Explorer 8.0 and 9.0 browser</li> <li>Test integration of desktop application with Internet Explorer 8.0 and 9.0 browser</li> </ul>

Edition	AdminStudio	Virtualization Pack	Application Compatibility Pack
<b>Enterprise (Per Desktop) Complete</b>	Includes Enterprise Edition (Per Desktop) with both the <b>Virtualization Pack</b> and the <b>Application Compatibility Pack</b> . 		
	<b>Note</b> • Web Application Compatibility Pack is available as an optional add-on feature.		

## Contacting Us

You may contact us from anywhere in the world by visiting our Web site at:

<http://www.flexerasoftware.com>



# AdminStudio 10.0 SP2 System Requirements

Before installing the AdminStudio 10.0 SP2 ZENworks Edition, review the following requirements:

- [Hardware and Software Requirements](#)
- [ZENworks Edition Requirement: Connection to a ZENworks Server](#)

## Hardware and Software Requirements

The following table lists the recommended system configuration for a machine running the AdminStudio ZENworks Edition:

**Table 2-1** • Hardware and Software Requirements

Item	Description
<b>Processor</b>	32-bit (x86) or 64-bit (x64) processor at 1 GHz or greater
<b>RAM</b>	1 GB
<b>Hard Disk</b>	1.1 GB
<b>Display</b>	Designed for XGA at 1024 x 768 resolution or higher
<b>Operating System</b>	Windows 7 SP1, Windows 7, Windows Vista, Windows XP (SP1 or later is recommended), or Windows Server 2003 or later. Predeployment Test and Configuration Manager Web Console require Microsoft IIS 5 or later.
<b>Browser</b>	Microsoft Internet Explorer 5.5 or later
<b>Privileges</b>	Administrative privileges on the system

## ZENworks Edition Requirement: Connection to a ZENworks Server

To use AdminStudio ZENworks Edition, you must be able to connect to a ZENworks server. The first time you launch one of the AdminStudio tools, you will be prompted to enter the login credentials to a ZENworks server. After you successfully connect to that server, you will not be required to enter this information again.



---

**Note** • For more information, see [Activating AdminStudio ZENworks Edition](#).

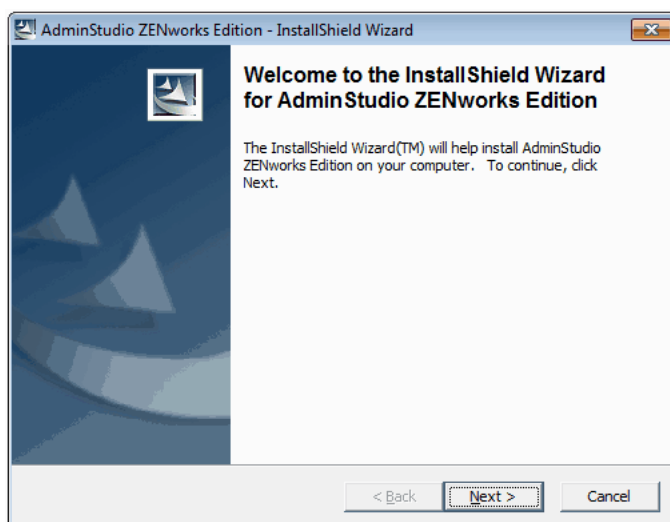
# Installing AdminStudio 10.0 SP2 ZENworks Edition

To install AdminStudio 10.0 SP2 ZENworks Edition, perform the following steps.

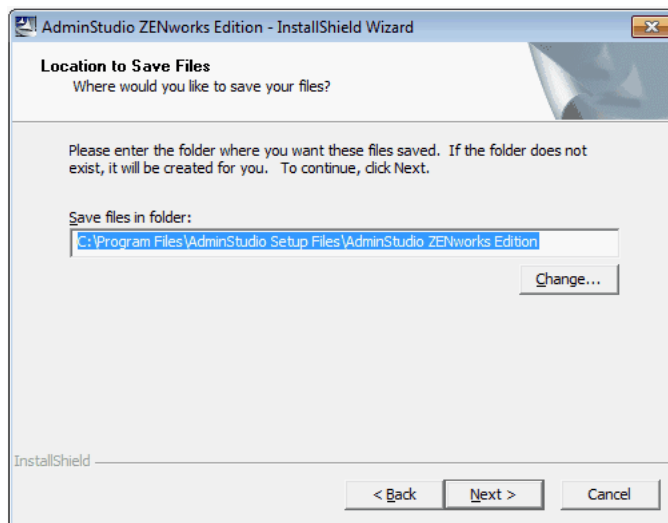


**Task:** *To install AdminStudio ZENworks Edition:*

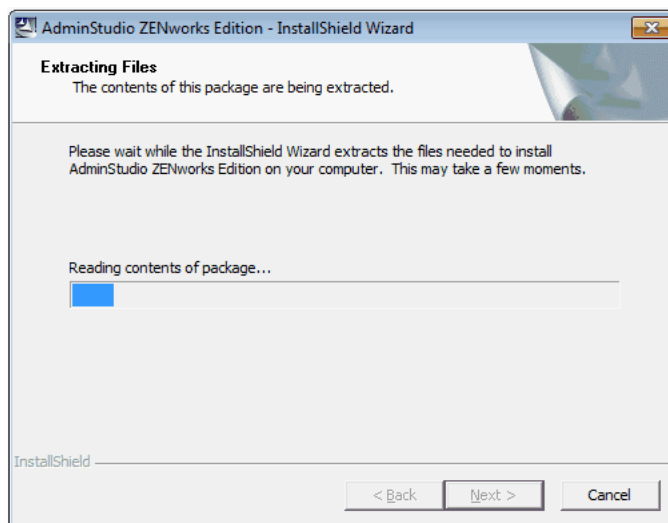
1. Launch the AdminStudio ZENworks Edition installation program. The InstallShield Wizard opens.



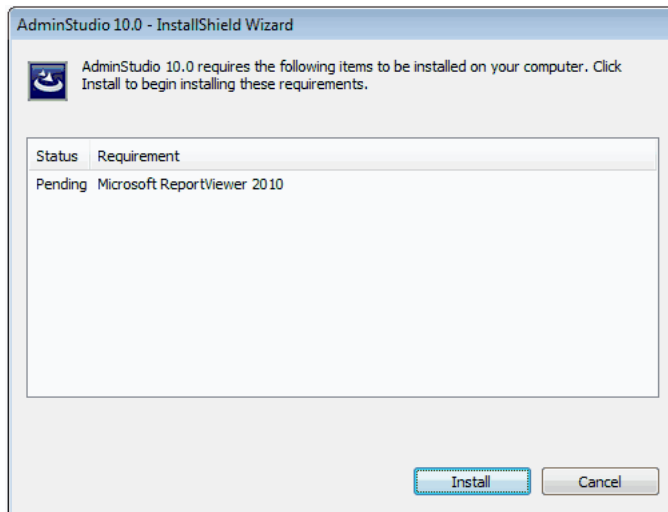
2. Click **Next**. The **Location to Save Files** panel opens.



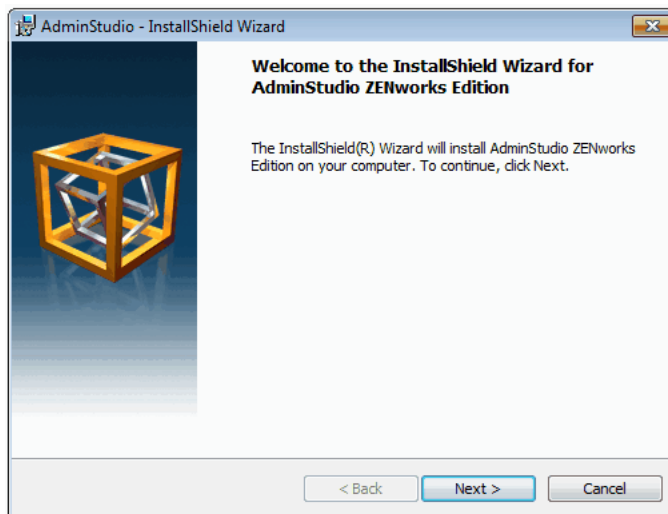
3. Select a folder where you would like the installation files saved, or accept the default location, and click **Next**. The **Extracting Files** panel opens.



When extraction is complete, you will probably be prompted to install the Microsoft ReportViewer 2010, if it is not already installed.



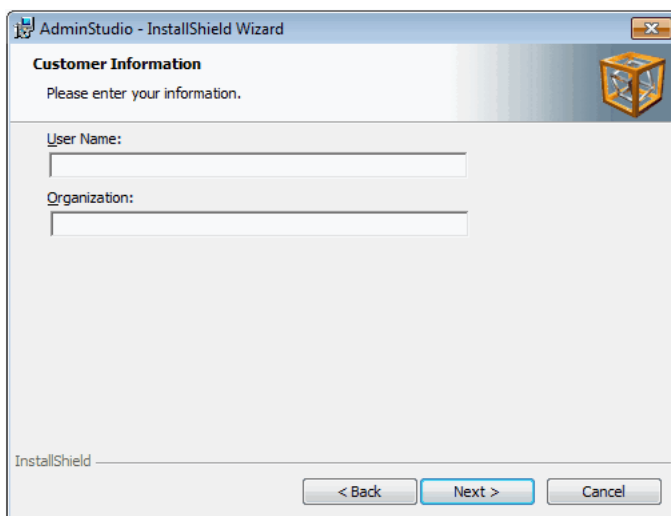
4. Click **Install**. When the installation of that component is complete, the **Welcome** panel opens.



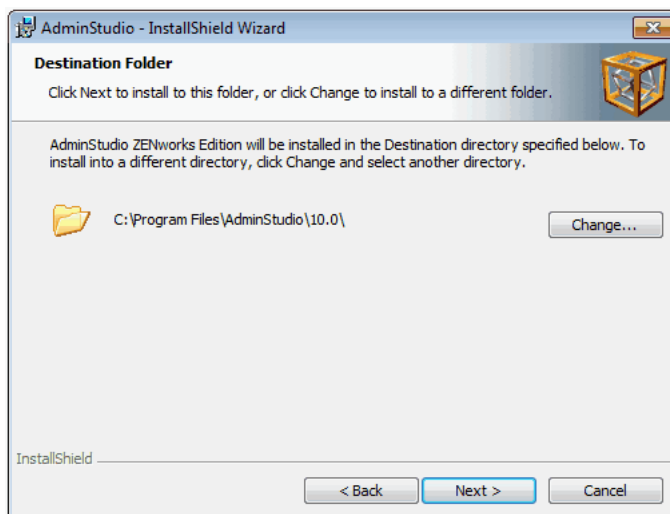
5. Click **Next**. The **License Agreement** panel opens.



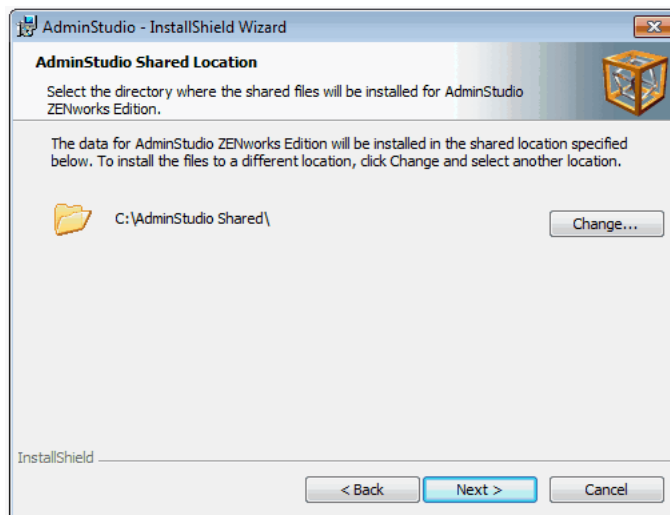
6. Select the **I accept the terms in the license agreement** option and click **Next**. The **Customer Information** panel opens.



7. Enter a **User Name** and **Organization** name to identify this installation of AdminStudio, and click **Next** to continue. The **Destination Folder** panel opens.

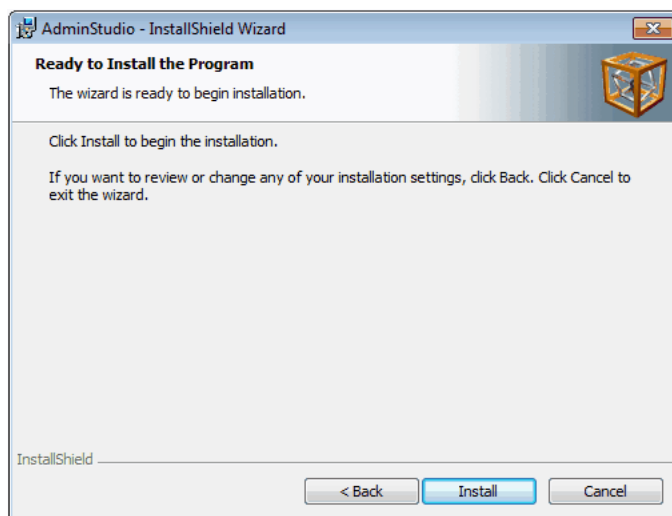


8. If you want to install AdminStudio in the specified directory, click **Next**. If you want to select a different directory, click **Change**, select a new directory, and then click **Next**. The **AdminStudio Shared Location** panel opens.



The AdminStudio Shared directory contains shared information for repackaging and conflict identification, and other AdminStudio functions. If you are working in a team environment, the AdminStudio Shared directory should be set to a centralized network location, accessible by all AdminStudio users at your organization, rather than on your local machine.

9. Specify the location of your organization's AdminStudio Shared directory, and click **Next**. The **Ready to Install the Program** panel opens.



10. Click **Install** to begin the installation process.
11. When installation is complete, click **Finish** to exit the installer.
12. To install the AdminStudio 10.0 Service Pack 2 update, click on one of the following links to download the SP2 installer:
  - **ZENworks Edition for ZENworks 10 and 11 Users:**  
[http://download.novell.com/  
sendredirect?target=%2Fprot%2FzA6bsgK6XKk%7E%2FAdminStudioSE10SP2.iso&buildid=zA6bsgK6XKk~&fileid=ssOm5eaVwp4~&mirror=AkamaiHost&nohost=false](http://download.novell.com/sendredirect?target=%2Fprot%2FzA6bsgK6XKk%7E%2FAdminStudioSE10SP2.iso&buildid=zA6bsgK6XKk~&fileid=ssOm5eaVwp4~&mirror=AkamaiHost&nohost=false)
  - **ZENworks Edition for ZENworks 7 Users:**  
[http://download.novell.com/  
sendredirect?target=%2Fprot%2FzA6bsgK6XKk%7E%2FZEN7\\_SoftwarePackaging\\_10SP2.iso&buildid=zA6bsgK6XKk~&fileid=qIPYHZv7OoY~&mirror=AkamaiHost&nohost=false](http://download.novell.com/sendredirect?target=%2Fprot%2FzA6bsgK6XKk%7E%2FZEN7_SoftwarePackaging_10SP2.iso&buildid=zA6bsgK6XKk~&fileid=qIPYHZv7OoY~&mirror=AkamaiHost&nohost=false)
13. Run the installer to install Service Pack 2. When installation is complete, click **Finish** to exit the installer.
14. Then, proceed with one of the following:
  - [Activating AdminStudio ZENworks Edition](#)
  - [Evaluating AdminStudio Enterprise Edition Client Tools](#)

---

# Activating Your Product

AdminStudio product activation requires you to enter a valid serial number for one of the Editions of AdminStudio. This chapter includes the following topics to assist you with activating your product:

- [About Activation](#)
- [Activating AdminStudio ZENworks Edition](#)
- [Activation Troubleshooting](#)



---

**Note** • You can also choose to evaluate the AdminStudio Enterprise Edition client tools for 60 days without obtaining a serial number. See [Evaluating AdminStudio](#) for more information.

## About Activation

AdminStudio product activation requires you to enter a valid serial number for one of the Editions of AdminStudio. When you launch AdminStudio or one of its tools for the first time, a dialog box opens, informing you that you are in trial mode, and prompting you to choose to either activate or evaluate the product.

To start using AdminStudio, do one of the following:

- **You want to activate AdminStudio ZENworks Edition**—If you want to activate AdminStudio ZENworks Edition, see [Activating AdminStudio ZENworks Edition](#).
- **You want to evaluate the AdminStudio Enterprise Edition client tools**—If you want to evaluate the AdminStudio Enterprise Edition client tools for 60 days, see [Evaluating AdminStudio](#).



**Note** • If you want to evaluate the AdminStudio Enterprise Server Web tools (Job Manager, Report Center, Security Console), you need to obtain an Enterprise Server serial number from an AdminStudio Sales Representative. See [Evaluating the AdminStudio Enterprise Server Web Tools](#).

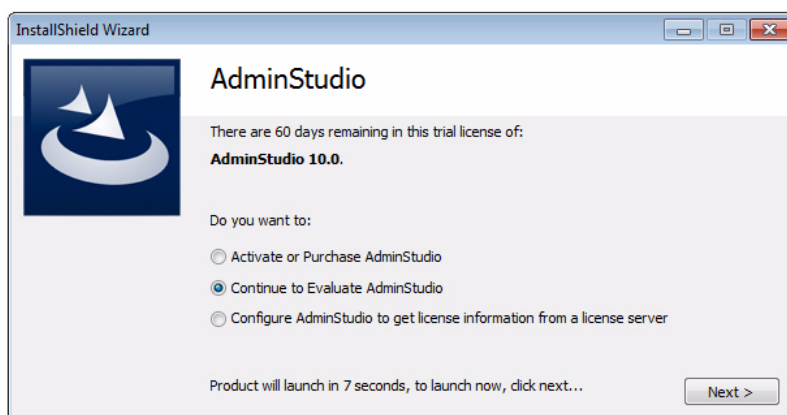
## Activating AdminStudio ZENworks Edition

If you want to activate AdminStudio ZENworks Edition, perform the following steps.

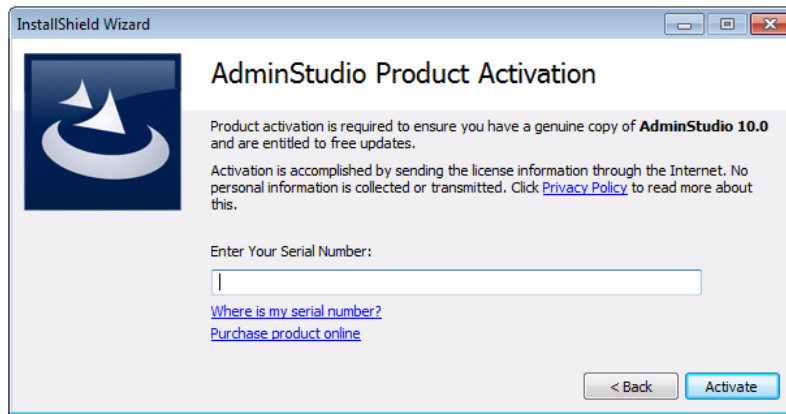


**Task:** *To activate your installation of AdminStudio ZENworks Edition:*

1. Launch AdminStudio ZENworks Edition. The following dialog box opens, prompting you to either activate or evaluate AdminStudio.



2. Select **Activate or Purchase AdminStudio** and click **Next**. The AdminStudio Product Activation dialog box opens, and you are prompted to **Enter Your Serial Number**.



3. Enter the serial number that you received from Novell and click **Activate**. First, a message appears stating that the serial number is being validated, and then the message **Activation Complete** appears. Your product would then be fully activated and you would be able to use all of the tools that are included in the AdminStudio ZENworks Edition that you have downloaded.



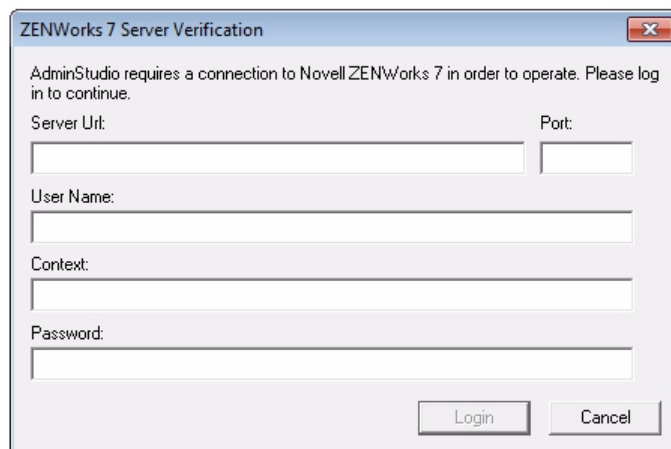
**Note** • If you do not have an online connection, you can activate your product via email. See [Email Activation](#).

4. Click **Finish**. AdminStudio launches. You will then be prompted to log in to a ZENworks eDirectory or a ZENworks Configuration Management server.




**Note** • Your organization should have previously installed the ZENworks server and provided you with the appropriate login credentials for that server.

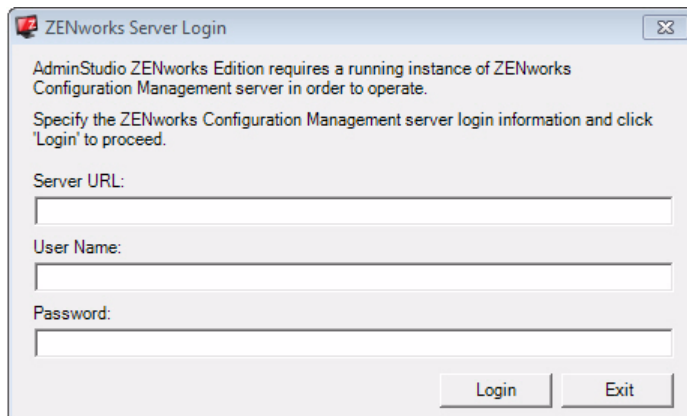
- **AdminStudio ZENworks Edition for ZENworks 7 Users**—If you are activating AdminStudio ZENworks Edition for ZENworks 7, the **ZENworks 7 Server Verification** dialog box opens:



Enter the following information:


Field	Description
<b>Server Url</b>	Enter the IP address of your organization's ZENworks 7 server, such as:  111.22.33.444  <b>Note</b> • Do not include an <code>http://</code> or <code>https://</code> prefix.
<b>Port</b>	Enter the port of used for your ZENworks 7 Server installation. The default LDAP port for ZENworks 7 Server installation is <b>636</b> . However, if a different port was used, enter that port number here.
<b>User Name</b>	Enter a user name for this ZENworks 7 Server.
<b>Context</b>	Enter the context that was specified during the ZENworks 7 Server installation. The context identifies where your ZENworks 7 admin account is located in the tree.
<b>Password</b>	Enter a password for this ZENworks 7 Server.

- **AdminStudio ZENworks Edition for ZENworks 10 and 11 Users**—If you are activating AdminStudio ZENworks Edition for ZENworks 10 and 11, the **ZENworks Server Login** dialog box opens:



The image shows a Windows-style dialog box titled "ZENworks Server Login". It contains the following text: "AdminStudio ZENworks Edition requires a running instance of ZENworks Configuration Management server in order to operate. Specify the ZENworks Configuration Management server login information and click 'Login' to proceed." Below this text are three input fields labeled "Server URL:", "User Name:", and "Password:". At the bottom right of the dialog are two buttons: "Login" and "Exit".

Enter the following information:

Field	Description
<b>Server URL</b>	<p>Enter the URL of your organization's ZENworks Configuration Management server, preceded by <code>http://</code>, such as:</p> <p><code>http://111.22.33.444</code></p> <p>You can enter either the server name or the IP address.</p>  <hr/> <p><b>Note</b> • Do not use the <code>https://</code> prefix.</p>
<b>User Name Password</b>	<p>Enter the login credentials to login to your ZENworks Configuration Management server.</p>



**Tip** • After a successful login, you will not be prompted to login again.

5. Click **Login**. AdminStudio ZENworks Edition opens.

# Activation Troubleshooting

AdminStudio is protected by Flexera Software's own licensing technology in order to ensure the acceptable use of our products on a single and unique machine.

In order to install the full version of AdminStudio, it must first be activated through communication with a Flexera Software-hosted activation server. While we have thoroughly tested our license protection, there are some circumstances that could prevent this activation from occurring. The troubleshooting steps in this section should resolve these circumstances.

- [General Troubleshooting](#)
- [Offline Activation Via Email](#)
- [Activating Products Silently](#)
- [Reactivating AdminStudio on a Different Computer](#)

## General Troubleshooting

The following troubleshooting steps should resolve most activation issues:

- [General Troubleshooting Steps](#)
- [Virtual Environments](#)
- [Authenticated Proxy Support for Activation](#)

### General Troubleshooting Steps

If you are having trouble activating your product, review the following troubleshooting steps:

- **Disable any firewalls or proxy settings.** Certain firewall and proxy configurations can prevent the Activation Service from communicating with Flexera Software's servers. We recommend temporarily disabling firewalls and proxies while installing and uninstalling in order to allow full communication with our servers. If you are unable to modify these services, then an email activation may be required. See [Offline Activation Via Email](#)
- **Check the serial number.** Confirm that the serial number you are entering is correct, and that it has been entered in the format XXXXXX-XXX-XXXXXXXXXX (7-3-10).
- **Was your product previously activated on another machine?** If your product has been previously activated on another machine, you must first deactivate the license on that machine through a full uninstall before it can be activated on the new machine. Deactivation requires an internet connection to communicate with the server to properly free up a different machine for activation.



---

**Note** • For more detailed information about deactivation, please see the following knowledge base article: [Activation and Deactivation Information for InstallShield and AdminStudio](#)

## Virtual Environments

Some known issues with activation relate to virtual environments (VMware, VirtualPC, etc.) and running system restore utilities. It is recommended that AdminStudio be installed on stable systems that are not run in virtual environments and that are not re-imaged frequently.

## Authenticated Proxy Support for Activation

AdminStudio 7.5 or later supports authenticated proxies for activation.

# Offline Activation Via Email

If you are unable to activate through the automatic online method (due to firewalls, anti-virus software, or any other reason), an email activation is required.



---

**Task:** *To perform offline activation via email:*

1. Attempt to activate AdminStudio through the Internet. If it cannot be completed, the activation wizard displays a message explaining why it could not occur.
2. Click the **Proceed with offline activation** button. The **Offline Activation** dialog box opens. The **Request** text box contains your request text. The request text starts with `<?xml version`, and it ends with `</Request>`.
3. Perform one of the following steps:
  - **To copy the request text to the clipboard**, click the **Copy** button. Note that all of the text in the **Request** text box must be selected when you do this. The activation wizard copies the request text to your clipboard, enabling you to paste it into another application, such as Notepad. Send the request text to the email address that is provided in the activation wizard.
  - **To save the request text to a text file that you can email from a different machine**, click the **Save** button. The wizard lets you save the text as a `.request` file. Send the `.request` file to the email address that is displayed in the activation wizard.
  - **To print the request text**, click the **Print** button. The wizard uses your machine's default text editor to print the request text to your machine's default printer. Send the request text to the email address that is provided in the activation wizard.
  - **To email the request text to AdminStudio Support from the machine that is running the activation wizard**, click the **E-mail** button. The wizard opens a new email message in your default email client. The body of the message contains the request text that AdminStudio Support needs. The **To** field has the email address where you should send the message. Send the message.

When AdminStudio Support receives the email message from you, a representative will email to you a message with the response text. If you still have time left in your trial period, you can use AdminStudio while you wait for the message.

4. When you receive the email message from AdminStudio Support and you are ready to complete the activation process, launch AdminStudio to open the activation wizard.

5. Proceed to the **Offline Activation** dialog box, which has **Response** text box.
6. Copy the response text that is in the email message from AdminStudio Support to your clipboard. The response text starts with `<?xml version=`, and it ends with `</Response>`. In the wizard, click the **Paste** button.



---

**Note** • As an alternative for step 6, you can copy the response text and paste it into a text file. Change the name of the text file to `License.response`. In the **Offline Activation** dialog box, click the **Load** button, and then select the `License.response` file.

7. Click the **Activate** button. The activation wizard activates AdminStudio.

Activation is a one-time process. Once you have completed activation, the activation wizard is no longer displayed when you launch AdminStudio.

## Activating Products Silently

AdminStudio 7.5 or later supports silent activation, enabling you to use public Windows Installer properties to enter the serial number automatically during installation.

To enable silent activation, you need to set the following public Windows Installer properties.

- **PRODUCTID property**—Set the `PRODUCTID` property to a valid AdminStudio serial number. Enter this number in the following 7-3-10 format, including dashes: `XXXXXX-XXX-XXXXXXXXXX`.
- **ASACTSTATUS property**—Set the `ASACTSTATUS` property to 0 to allow the installer to show the status of the activation process as the product is activated, or set it to 1 to perform the activation without showing any status of the activation process.

## Reactivating AdminStudio on a Different Computer

AdminStudio uses a security technology known as the Activation Service. With this licensing software, the user of the installed product is required to “activate” via communication with a Flexera Software-hosted server. This process enables the product to work on a single, unique computer at a time, while disallowing simultaneous installation on other unauthorized systems.

If, after installing AdminStudio on a computer, you get a new computer or reformat the hard drive on your existing computer and then reinstall AdminStudio on that new computer or reformatted hard drive, the serial number you initially entered will no longer activate AdminStudio. Because you have already used that serial number to activate an installation of AdminStudio, it is now deactivated.

To reactivate your serial number, you need to first deactivate the license on that machine through a full uninstall before it can be activated on the new machine. Deactivation requires an internet connection to communicate with the server to properly free up a different machine for activation.



---

**Note** • If you are unable to perform a full uninstall of AdminStudio (because, for example, you no longer have the computer you originally installed AdminStudio on), you need to contact AdminStudio Sales to have them authorize a new activation.

## Chapter 4: Activating Your Product

### Activation Troubleshooting

# Evaluating AdminStudio

You can choose to evaluate AdminStudio for 60 days. By clicking **Continue to Evaluate AdminStudio** on the dialog box that opens when you launch AdminStudio, you can begin evaluating the AdminStudio Enterprise Edition client tools. To evaluate the AdminStudio Enterprise Server Web tools, you need to contact AdminStudio Sales and obtain an evaluation serial number.

- [Evaluating AdminStudio Enterprise Edition Client Tools](#)
- [Evaluating the AdminStudio Enterprise Server Web Tools](#)

## Evaluating AdminStudio Enterprise Edition Client Tools

To evaluate the Enterprise Edition client tools, perform the following steps.

**Task:**

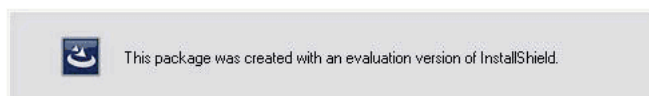
***To evaluate the AdminStudio Enterprise Edition client tools:***

1. Run the AdminStudio installation, as described in [Installing AdminStudio 10.0 SP2 ZENworks Edition](#).
2. Launch AdminStudio. A dialog box opens, stating that you are using a time-limited trial version.
3. If you want to evaluate AdminStudio, select the **Continue to Evaluate AdminStudio** option and click **Next** (or just wait ten seconds). The product will launch.
  - When you run AdminStudio in this trial mode, all of its features are fully available.
  - Each time you open AdminStudio while you are in evaluation mode, this dialog box shows you how many days are left in your trial period.

4. If you have five or fewer days left in your trial period, the dialog box remains open, requiring you to click before you can proceed. Do one of the following:
  - a. If your trial period is not over, you can continue to use AdminStudio by selecting the **Continue to Evaluate AdminStudio** option and clicking **Next**.
  - b. If you have already purchased a serial number or want to purchase one online, select **Activate or Purchase AdminStudio** and click **Next**.

### Evaluating AdminStudio's Microsoft App-V Support

While evaluating the AdminStudio Enterprise Edition client tools, you will be able to convert a Windows Installer package to an App-V application using the Automated Application Converter, Repackager, and the InstallShield App-V Assistant. However, an App-V application built using an evaluation version of AdminStudio will display the following message every time it is launched:



**Figure 5-1:** Evaluation Version Message

After purchasing the AdminStudio Virtualization Pack, you will be able to remove this message by rebuilding the App-V application.

### Evaluating the Automated Application Converter “Multiple Application” Option

The Multiple Application option of Automated Application Converter is only available when you purchase the Virtualization Pack with AdminStudio Enterprise Edition.



**Note •** *If you purchase the Virtualization Pack with AdminStudio Standard or Professional Editions, you will only be able to convert one package at a time, using one virtual machine.*

When using an evaluation version of AdminStudio, you will be able to use Automated Application Converter to convert a directory full of Windows Installer packages into individual virtual packages, but the conversion will be limited to three packages per run, using only one virtual machine. Therefore, only the first three packages that Automated Application Converter encounters will be converted to virtual applications.

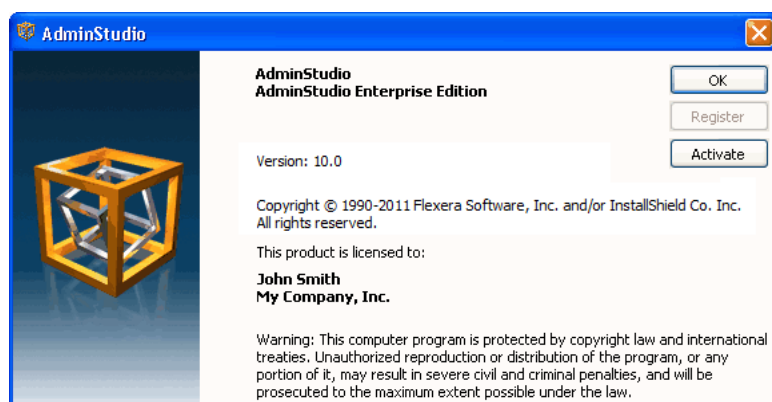
# Evaluating the AdminStudio Enterprise Server Web Tools

If you want to evaluate the AdminStudio Enterprise Server Web tools (Job Manager, Report Center, Security Console), you need to obtain an Enterprise Edition Serial Number from an AdminStudio Sales Representative.

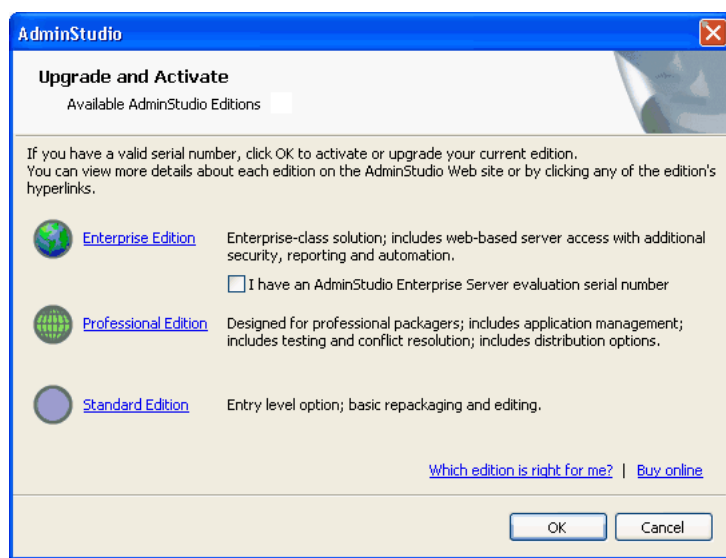


**Task:** *To evaluate the AdminStudio Enterprise Server Web tools:*

1. Follow the steps in [Evaluating AdminStudio Enterprise Edition Client Tools](#).
2. Contact an AdminStudio Sales Representative and obtain an AdminStudio Enterprise Server Evaluation Serial Number.
3. Open the AdminStudio interface and select **About AdminStudio** from the **Help** menu.



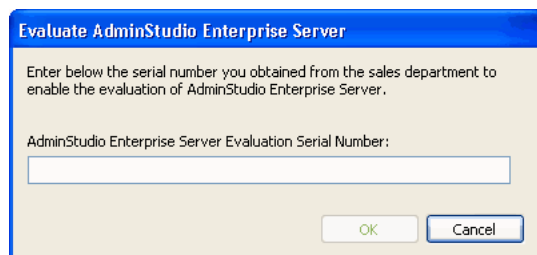
4. Click **Activate**. The **Upgrade and Activate** dialog box opens.



## Chapter 5: Evaluating AdminStudio

### Evaluating the AdminStudio Enterprise Server Web Tools

5. Select the **I have an Adminstudio Enterprise Server evaluation serial number** option and click **OK**. The **Evaluate Enterprise Edition** dialog box opens.



6. Enter the serial number and click **OK**. You will be prompted to install the AdminStudio Enterprise Server on the current machine.



**Caution** • AdminStudio Enterprise Server requires Windows Server 2003 or later operating system on a 32-bit (x86) or 64-bit (x64) processor at 1 GHz or greater. You cannot install or evaluate AdminStudio Enterprise Server on a non-server machine.

7. Click **Yes**. The AdminStudio Enterprise Server installation begins.
8. Install AdminStudio Enterprise Server, as described in the *AdminStudio Web Server Installation Guide*, which is available on the Flexera Software Downloads site.

# Upgrading Your Product Edition

An upgrade feature has been built-in to AdminStudio that allows you to activate features in a higher Edition without re-installing the application. You just need to enter a Serial Number for the upgrade that you purchased, and the features of that Edition are immediately unlocked and are available to you.

To upgrade, perform the following steps:



---

**Task:** *To upgrade your AdminStudio Edition:*

1. Contact an AdminStudio Sales Representative and purchase a Serial Number for the desired Edition.
2. Launch AdminStudio.
3. On the **Help** menu, click **About AdminStudio**. The **About AdminStudio** dialog box opens.
4. Click the **Upgrade** button. The **Upgrade and Activate** dialog box opens.
5. Click **OK** to upgrade your edition. The **AdminStudio Product Activation** dialog box opens, prompting you to enter the serial number of the edition that you want to upgrade to.
6. Enter the serial number of the edition you purchased and click the **Activate** button. After a few seconds, you will receive a message that activation was successful. The functionality of the upgraded edition is immediately available to you.



---

**Note** • You can also obtain an AdminStudio Enterprise Server Evaluation serial number from AdminStudio Sales which will allow you to try out the AdminStudio Enterprise Server Web tools before purchasing Enterprise Edition. See [Evaluating the AdminStudio Enterprise Server Web Tools](#) for more information.



---

# Index

## A

- activation [21](#)
  - about [22](#)
  - offline [27](#)
  - silent [28](#)
  - troubleshooting [26](#)
  - using Windows Installer properties [28](#)
  - via email [27](#)
- AdminStudio
  - about activation [22](#)
  - activation [21](#)
  - AdminStudio Shared directory [19](#)
  - client tools installation [15](#)
  - editions [6](#)
  - Enterprise edition [6](#)
  - evaluating AdminStudio Enterprise Server Web tools [33](#)
  - evaluating Enterprise Edition client tools [31](#)
  - how to evaluate [31](#)
  - installing [15](#)
  - Professional edition [6](#)
  - reactivating on different computer [29](#)
  - Standard edition [6](#)
  - test drive [31](#)
  - trial version [31](#)
  - upgrading [35](#)
  - upgrading to Professional or Enterprise Edition [35](#)
  - upgrading your product Edition [35](#)
- AdminStudio Shared directory [19](#)
- App-V applications
  - evaluating AdminStudio's App-V support [32](#)

## B

- batch convert option
  - evaluating [32](#)

## E

- email activation [27](#)
- evaluating
  - AdminStudio [31](#)
  - AdminStudio Enterprise Server [33](#)
  - AdminStudio's Microsoft App-V support [32](#)
  - batch convert option [32](#)

## I

- installing
  - AdminStudio [15](#)
  - reactivating AdminStudio on a different computer [29](#)

## O

- offline activation [27](#)

## R

- reactivation
  - of AdminStudio on a different computer [29](#)
- registration
  - offline [27](#)

## **S**

silent activation [28](#)  
system requirements  
    hardware and software [13](#)

## **T**

trial version  
    AdminStudio [31](#)

## **U**

upgrading  
    AdminStudio product Edition [35](#)

## **W**

watermark [32](#)