

# Bundle Commander

Administration Guide 1.2.0

Copyright, Trademarks, and Legal  
**ROVABU Software B.V.**  
[www.bundlecommander.com](http://www.bundlecommander.com)

January 28, 2013

© Copyright 2013 ROVABU Software B.V.. All rights reserved.

Novell and Novell ZENworks are either registered trademarks or trademarks of Novell in the United States and/or other countries.

Microsoft and Windows are either registered trademarks or trademarks of Microsoft Corporation in the United States and/or other countries.

Bundle Commander is a registered trademark of ROVABU Software BV in the Netherlands and/or other countries.

All other trademarks are the property of their respective owners.

## Table of Contents

---

|  |           |
|--|-----------|
| <b>About This Guide</b> .....  | <b>7</b>  |
| What is in this guide? .....   | 7         |
| Who should use this guide? .....                                     | 7         |
| Where do I find the latest information about Bundle Commander? ..... | 7         |
| <b>Support</b> .....   | <b>8</b>  |
| <b>Overview</b> .....  | <b>9</b>  |
| Standard Edition .....   | 9         |
| Professional Edition.....  | 9         |
| Product Comparison Chart .....                                       | 10        |
| <b>System Requirements</b> .....                                     | <b>11</b> |
| Novell ZENworks.....   | 11        |
| Credentials.....   | 11        |
| Operating System .....   | 11        |
| Microsoft .NET Framework 4 Extended .....                            | 11        |
| <b>Installation</b> .....  | <b>12</b> |
| Download .....   | 12        |
| Install .....  | 12        |
| Upgrade .....  | 15        |
| Uninstall.....   | 16        |
| <b>Launching</b> .....   | <b>17</b> |
| Connection Details .....   | 17        |
| Credentials.....   | 17        |
| File System.....   | 19        |
| Bundle Folders.....  | 21        |
| <b>Home</b> .....  | <b>22</b> |
| Connection .....   | 22        |
| Drives.....  | 22        |
| Bundles .....  | 23        |
| <i>Create Bundle(s)</i> .....  | 23        |
| <i>Create Bundle Folder</i> .....                                    | 24        |
| <i>Create Bundle Group</i> .....                                     | 24        |
| <i>Create Web Bundle</i> .....                                       | 25        |
| Configuration.....   | 26        |

|   |           |
|---|-----------|
| Options .....                                 | 26        |
| Licensing .....                               | 26        |
| Logfiles.....                                 | 27        |
| Credential Vault.....                         | 27        |
| Reports .....                                 | 27        |
| Export .....                                  | 27        |
| Print .....                                   | 27        |
| General .....                                 | 28        |
| About .....                                   | 28        |
| Check for updates.....                        | 28        |
| Website.....                                  | 28        |
| Relationships .....                           | 28        |
| Users.....                                    | 28        |
| Devices.....                                  | 28        |
| <b>ENGL.....</b>                              | <b>30</b> |
| <b>Import Wizards .....</b>                   | <b>32</b> |
| Import MSIs .....                             | 32        |
| <i>The Generic MSI Import Wizard .....</i>    | <i>32</i> |
| Architecture Level .....                      | 33        |
| Bundle Folder .....                           | 33        |
| Display Mode.....                             | 33        |
| CreateAsSandbox .....                         | 33        |
| GrantAdministratorPrivilege .....             | 33        |
| UILevel.....                                  | 33        |
| Security Level.....                           | 33        |
| <i>The Packaging Robot Import Wizard.....</i> | <i>33</i> |
| Import Virtual Applications .....             | 34        |
| <i>The App-V Import Wizard.....</i>           | <i>34</i> |
| <i>The ThinApp Import Wizard .....</i>        | <i>37</i> |
| <i>The ZAV Import Wizard .....</i>            | <i>38</i> |
| <b>Creating Windows Bundles (MSI) .....</b>   | <b>39</b> |
| General .....                                 | 39        |
| GroupWise 2012.....                           | 40        |
| General.....                                  | 45        |

|  |           |
|--|-----------|
| Bundle Type .....  | 45        |
| Settings .....   | 45        |
| Bundle Details.....  | 45        |
| Executable Security Level .....                                  | 45        |
| Architecture.....  | 45        |
| <i>Properties</i> .....  | 47        |
| <i>Transforms</i> .....  | 47        |
| <i>User Assignments</i> .....                                    | 48        |
| <i>Device Assignments</i> .....                                  | 49        |
| <i>Administrator Notes</i> .....                                 | 50        |
| Novell Vibe Desktop .....  | 53        |
| Novell Filr.....   | 54        |
| <b>Creating Windows Bundles (MSP) .....</b>                      | <b>55</b> |
| General .....  | 55        |
| Adobe Reader 10.1.4.....   | 55        |
| <i>General</i> .....   | 55        |
| Bundle Type.....   | 55        |
| Settings.....  | 56        |
| Bundle Details.....  | 56        |
| Executable Security Level .....                                  | 56        |
| Architecture.....  | 56        |
| <i>User Assignments</i> .....                                    | 56        |
| <i>Device Assignments</i> .....                                  | 56        |
| <b>Creating Windows Bundles (EXE) – Install Bundle Type.....</b> | <b>57</b> |
| General .....  | 57        |
| Microsoft Silverlight .....                                      | 59        |
| <i>General</i> .....   | 60        |
| Bundle Type.....   | 60        |
| Settings.....  | 60        |
| Bundle Details.....  | 60        |
| Executable Security Level .....                                  | 60        |
| Architecture.....  | 60        |
| <i>Environment Variables</i> .....                               | 61        |
| <i>User Assignments</i> .....                                    | 61        |

|  |           |
|--|-----------|
| <i>Device Assignments</i> .....                                  | 61        |
| <i>Administrator Notes</i> .....                                 | 61        |
| Novell iFolder 3.8.....  | 62        |
| <b>Creating Windows Bundles (EXE) – Launch Bundle Type</b> ..... | <b>63</b> |
| General.....   | 63        |
| GroupWise 2012.....  | 64        |
| <i>General</i> .....   | 65        |
| Bundle Type.....   | 65        |
| Settings.....  | 65        |
| Bundle Details.....  | 65        |
| Executable Security Level .....                                  | 66        |
| Architecture.....  | 66        |
| <i>Environment Variables</i> .....                               | 66        |
| <i>User Assignments</i> .....                                    | 66        |
| <i>Device Assignments</i> .....                                  | 66        |
| <i>Administrator Notes</i> .....                                 | 66        |

## About This Guide

---

This guide is provided to help administrators understand and implement Bundle Commander for Novell ZENworks Configuration Management.

### What is in this guide?

This guide contains the following information:

- An overview of the features and functionality
- An explanation of the architecture
- Instructions on running the application
- Troubleshooting, tips, and FAQ

### Who should use this guide?

This guide is intended for the administrators who are responsible for the preliminary setup and for running Bundle Commander for Novell ZENworks. Those administrators need to have a thorough understanding of Novell ZENworks administration, Windows, and Windows application management.

### Where do I find the latest information about Bundle Commander?

You can find information about the latest version of Bundle Commander, including new features and fixed issues, at our Web site at <http://www.bundlecommander.com> , on our Twitter Page <http://www.twitter.com/bundlecommander>, our LinkedIn page, and on Facebook: <http://www.facebook.com/bundlecommander>

## Support

For general information, technical information, the partner locator, pricing information, and support, browse to <http://www.bundlecommander.com> to find information about the latest versions, blog articles, and the support forums. You can also contact us at [support@bundlecommander.com](mailto:support@bundlecommander.com).



The screenshot shows a Firefox browser window titled "Bundle Commander - FrontMotion Firefox" with the address bar displaying "www.bundlecommander.com". The website content includes the "Bundle Commander" logo, a navigation menu with links for Home, About, Blog, Contact us, Partners, Products, Store, and Support, and social media icons for Facebook, Twitter, LinkedIn, and RSS. The main text describes the software's purpose: "Bundle Commander for Novell ZENworks Configuration Management provides a new way of creating Windows Bundles in a simple and intuitive way. Creating Windows Bundles, finding and deploying installation parameters for software which needs to be deployed is one of the most time consuming and troublesome tasks that administrators must undertake to deploy Windows applications. Bundle Commander lowers the cost associated with application management by automating the manual steps that have to be repeated for every new application." It also mentions the Chief Architect and Product Developer, Roel van Bueren of ROVABU Software BV, and the software's history with ZENworks, Windows Installer, and Windows applications since Windows 3.1. A video player is embedded, showing a screenshot of the "GroupWise 2012" software interface with a "from Roel van Bueren PLUS" watermark. The video player shows a progress bar at 03:45 and a "vimeo" logo. At the bottom of the page, the copyright notice reads "Copyright © 2012. ROVABU Software BV / Bundle Commander".



## Overview

---

Bundle Commander for Novell ZENworks Configuration Management provides a new way to create Windows bundles in a simple and intuitive way.

Creating Windows bundles, figuring out installation parameters, and deploying installation parameters for software that needs to be deployed, is one of the most time-consuming and troublesome tasks that administrators must undertake to deploy Windows applications. Bundle Commander lowers the cost associated with application management by automating the manual steps that have to be repeated for every new application.

Chief Architect and Product Developer for Bundle Commander is Roel van Bueren of ROVABU Software BV. Roel has worked with ZENworks since it was released in 1998, Windows Installer technology since it was released with Office 2000 in 1999, and Windows applications and application installers since Windows 3.1.

### Standard Edition

Bundle Commander Standard Edition is licensed per ZENworks Management Zone for an unlimited number of machines and administrators.

### Professional Edition

Bundle Commander Professional Edition is licensed per ZENworks Management Zone, per registered ZENworks device. A license is subscription based and granted for a duration of one (1) year.

## Product Comparison Chart

| Standard Edition  | Professional Edition<br>(Subscription per 12 months)  |
|---|---|
| Create Install and Launch bundles   | Create Install and Launch bundles   |
| <a href="#">ITNinja Integration</a>   | <a href="#">ITNinja Integration</a>   |
| Configuration Wizards for Novell GroupWise, Novell Filr, and Novell Vibe Desktop  | <a href="#">Configuration Wizards for applications such as Novell GroupWise, Novell Filr, Novell Vibe Desktop, Adobe Flash, Oracle J2RE, Apple QuickTime, Apple iTunes, and Microsoft Live Essentials</a> |
| Generic MSI Import Wizard<br>(A maximum of 5 MSI setups can be imported)  | Generic MSI Import Wizard   |
| <a href="#">BRAIN FORCE Packaging Robot</a> Import Wizard<br>(A maximum of 5 MSI setups can be imported)                            | <a href="#">BRAIN FORCE Packaging Robot</a> Import Wizard   |
| <a href="#">Provides unattended/silent switches for Novell legacy setups</a> like Novell iFolder 3.8, and Novell Client for Windows | <a href="#">Provides unattended/silent switches for legacy setups</a> (NSIS, InnoSetup, InstallShield, Ethalone Ghost Installer, InstallAware)  |
|   | Provides best practice public properties for MSI packages   |
|   | ZENworks Application Virtualization Import Wizard   |
|   | <a href="#">Microsoft App-V Import Wizard</a>   |
|   | <a href="#">VMware ThinApp Import Wizard</a>  |
|   | Add relationships to users and/or devices   |
|   | Print and export Bundle Folder information to Excel, PDF, and XPS   |
|   | <a href="#">ENGL Imaging Toolkit</a> integration  |
|   | Professional support (email, <a href="#">forums</a> )   |
|   | <a href="#">Application Setup Center</a>  |

## System Requirements

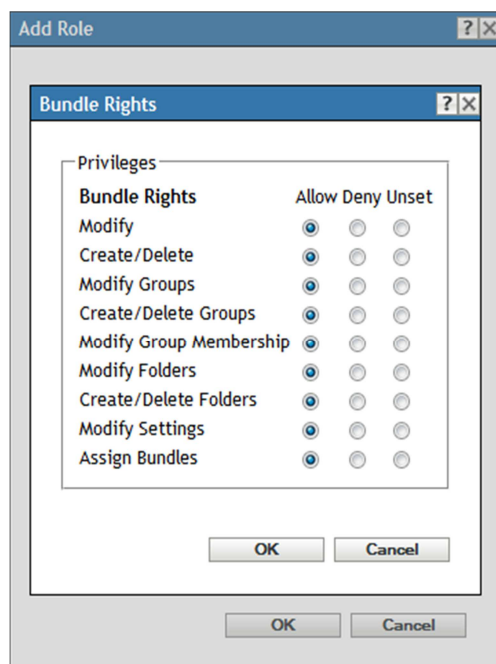
Before you run Bundle Commander, you need to meet some configuration requirements for your Microsoft Windows devices.

### Novell ZENworks

Novell ZENworks Configuration Management 10.3.4 and later is supported.

### Credentials

You need to have access to the Administrator user credentials or you need to create a ZENworks administrator user who is either a Super Administrator or who has all Bundle Rights.



## Operating System

Bundle Commander is supported on the following Windows operating systems:

- Microsoft Windows XP (SP3)
- Microsoft Windows 7 x86 or x64
- Microsoft Windows 8 x86 or x64
- Microsoft Windows Server 2008
- Microsoft Windows Server 2008 R2
- Microsoft Windows Server 2012

The Windows device on which you run Bundle Commander does not need to be registered in the ZENworks Management Zone you want to use Bundle Commander against.

### Microsoft .NET Framework 4 Extended

Microsoft .NET Framework 4 Extended should be installed. If you do not have this installed, you can download it from Microsoft's Web site as [Microsoft .NET Framework 4 \(Standalone Installer\)](#).

## Installation

---

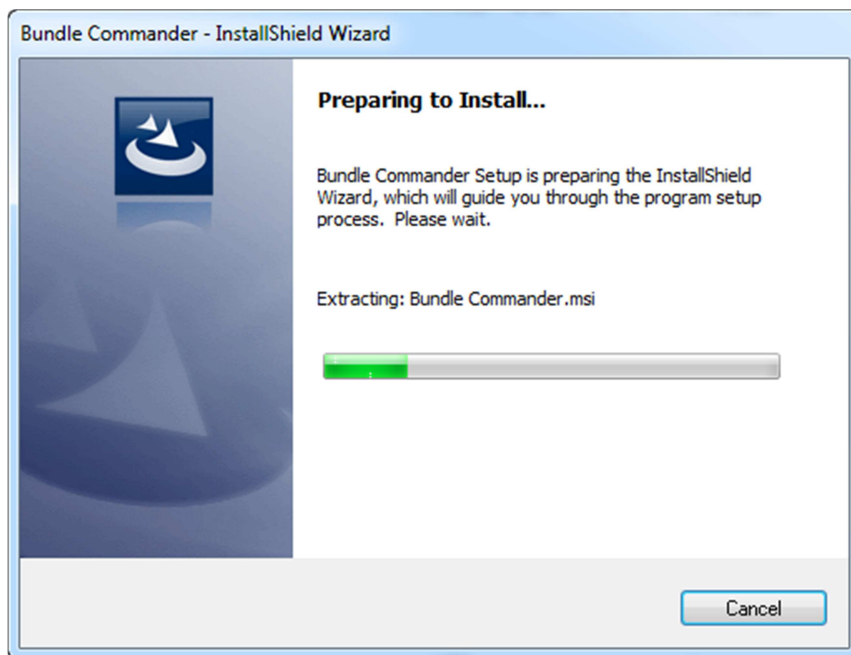
### Download

Download BundleCommander-setup-1.2.xyz.exe from either <http://download.novell.com> or by using the download link in the email message you've received after registration on the registration page of the Bundle Commander website. Xyz is the latest build as reported on the support forums of the Bundle Commander web site (<http://www.bundlecommander>).

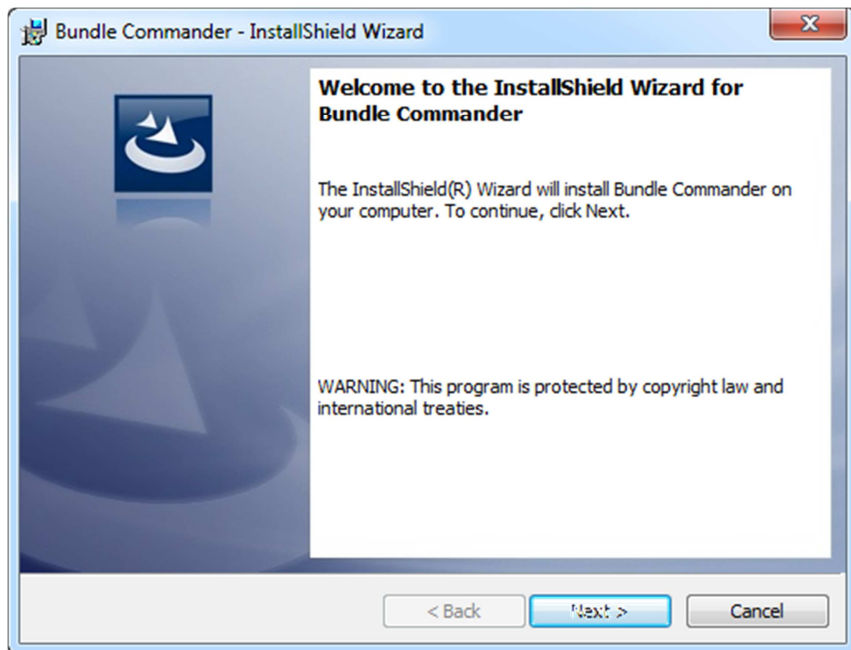
Copy the setup to any folder on your Administrator device. Run the setup from there. You can install Bundle Commander on multiple Windows Administrator machines in your network if needed.

### Install

Run the setup first.



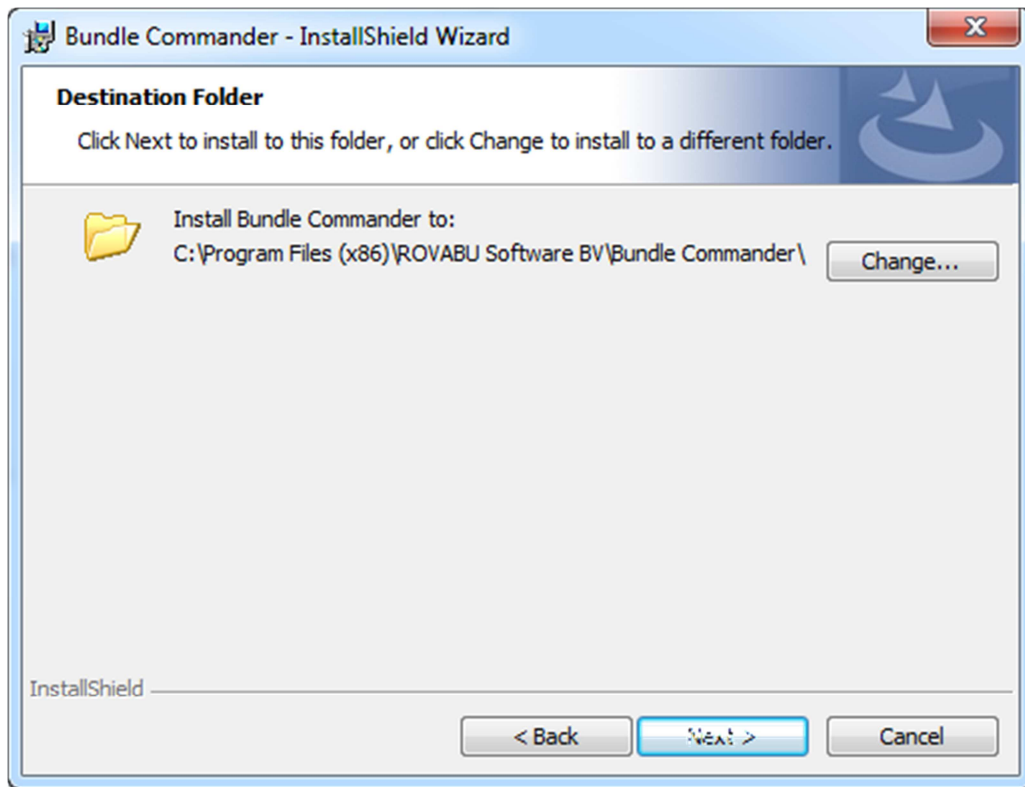
When the welcome screen is shown, click Next.



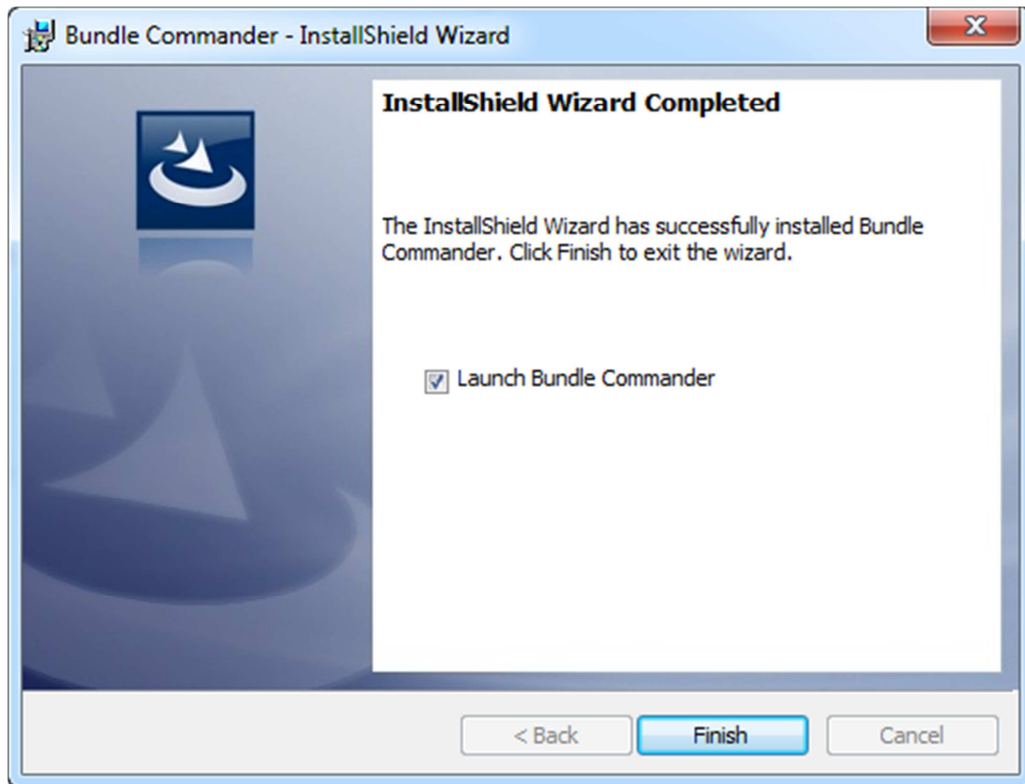
Read the License Agreement carefully, click the I accept option, then click Next.



The default installation directory is C:\Program Files\ROVABU Software BV\Bundle Commander. Optionally, you can change the destination folder:

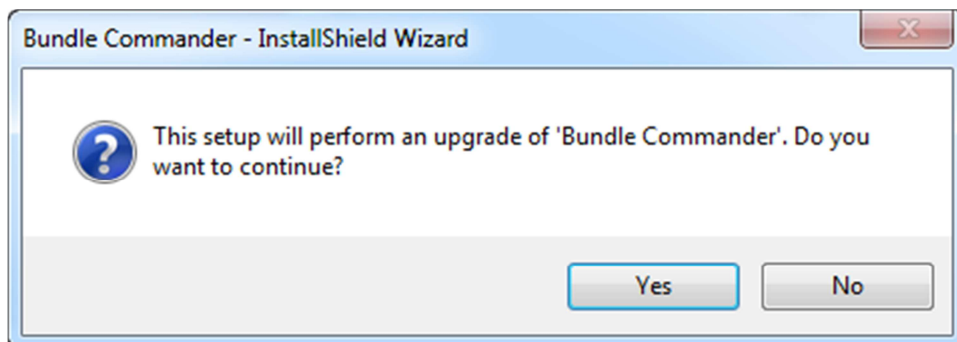


After the installation, you can select the Launch Bundle Commander check box to launch Bundle Commander.



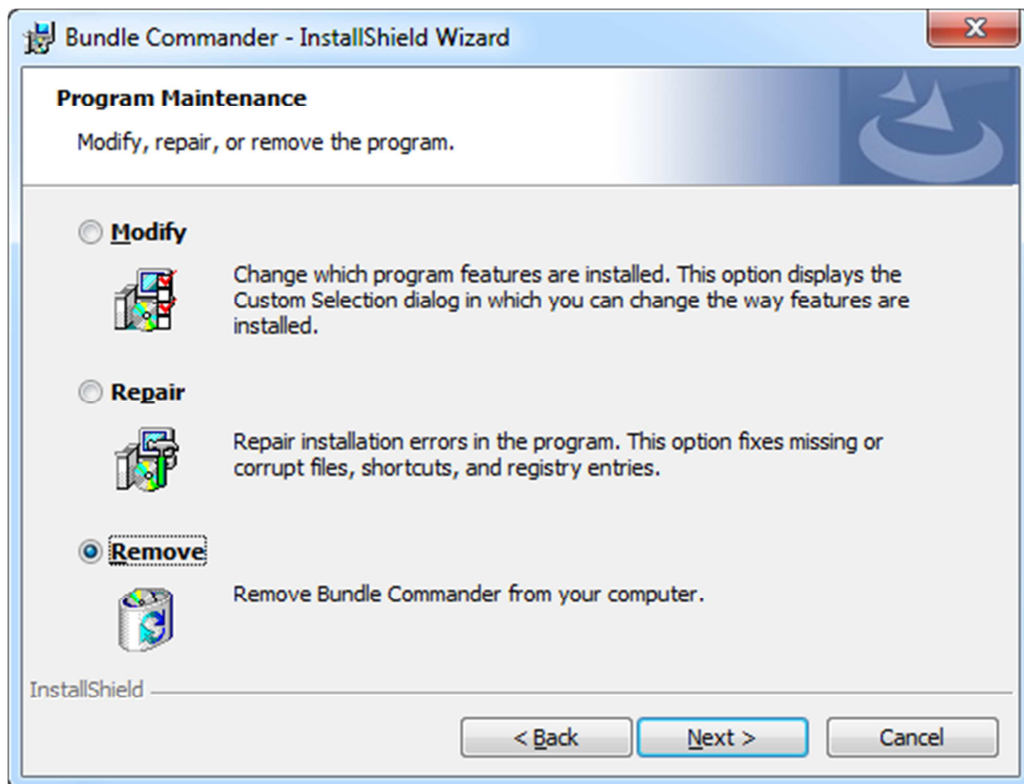
## Upgrade

When you want to upgrade to a new build of Bundle Commander, just run the new setup. The setup detects that you have an older version installed and gives you the option to upgrade.



## Uninstall

To remove Bundle Commander, run the setup again and select Remove.



You can also use the Windows Control Panel to remove Bundle Commander.

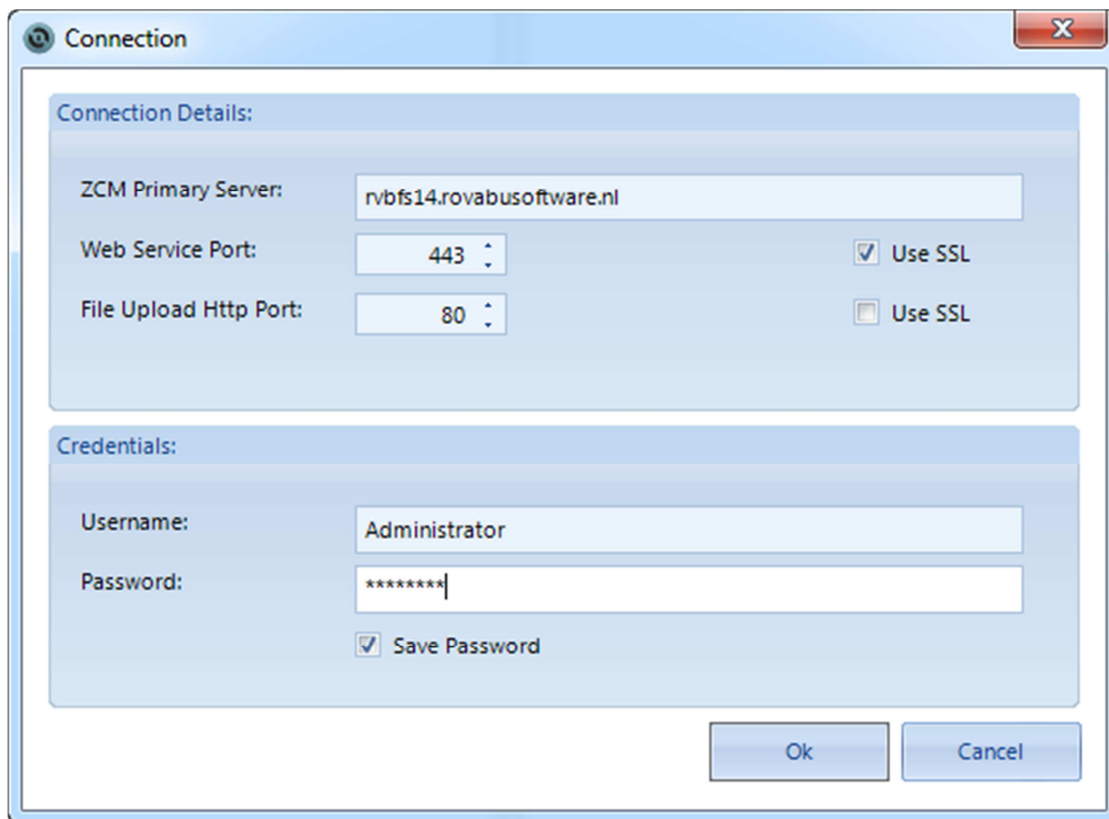


## Launching

Use the shortcut on the Start Menu or the desktop to launch Bundle Commander and view the *Administration Guide*. After the initial launch, the Connection screen is displayed automatically.

### Connection Details

Bundle Commander connects through the Web service interface of your ZENworks Primary Server. In Bundle Commander's Connection screen, you must provide the correct DNS name or IP address of your ZENworks Primary Server, as well as the Web Service port and File Upload port and whether you are using SSL. If you have configured custom port numbers, you can review the `..\tomcat\conf\server.xml` configuration file and search for *Connector port*:

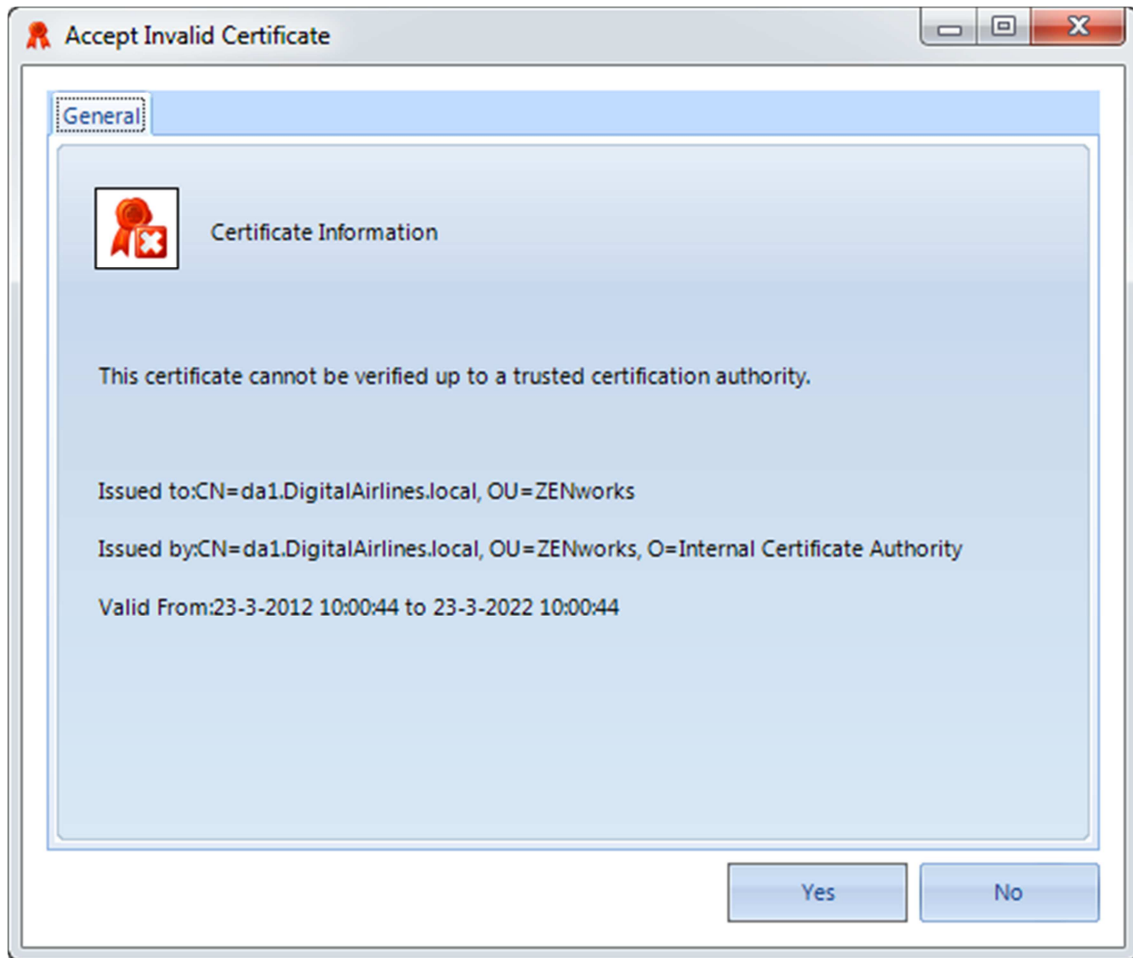


### Credentials

Provide the user name and password of either the Administrator user of your ZENworks Management Zone, a ZENworks administrator who is a Super Administrator, or a ZENworks administrator who has all Bundle Rights. You can optionally save the password for the selected user, which will then be encrypted and stored in the following location:

```
C:\Users\\AppData\Local\ROVABU Software BV\Bundle  
Commander\settings.xml
```

If you do not have a valid certificate installed and configured, an Accept Invalid Certificate screen is shown, similar to what you see when you log in to ZENworks Control Center:

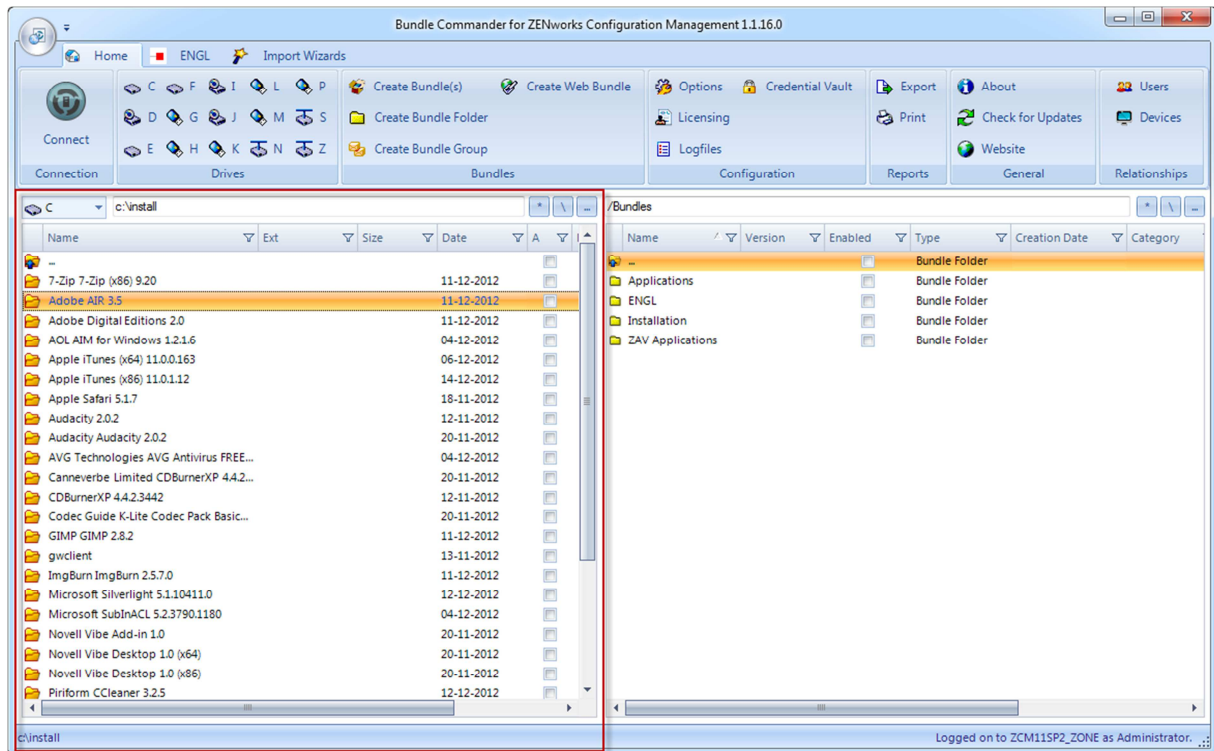


After a successful connection, the right panel shows the bundles and bundle folders in your main Bundles folder, similar to ZENworks Control Center.

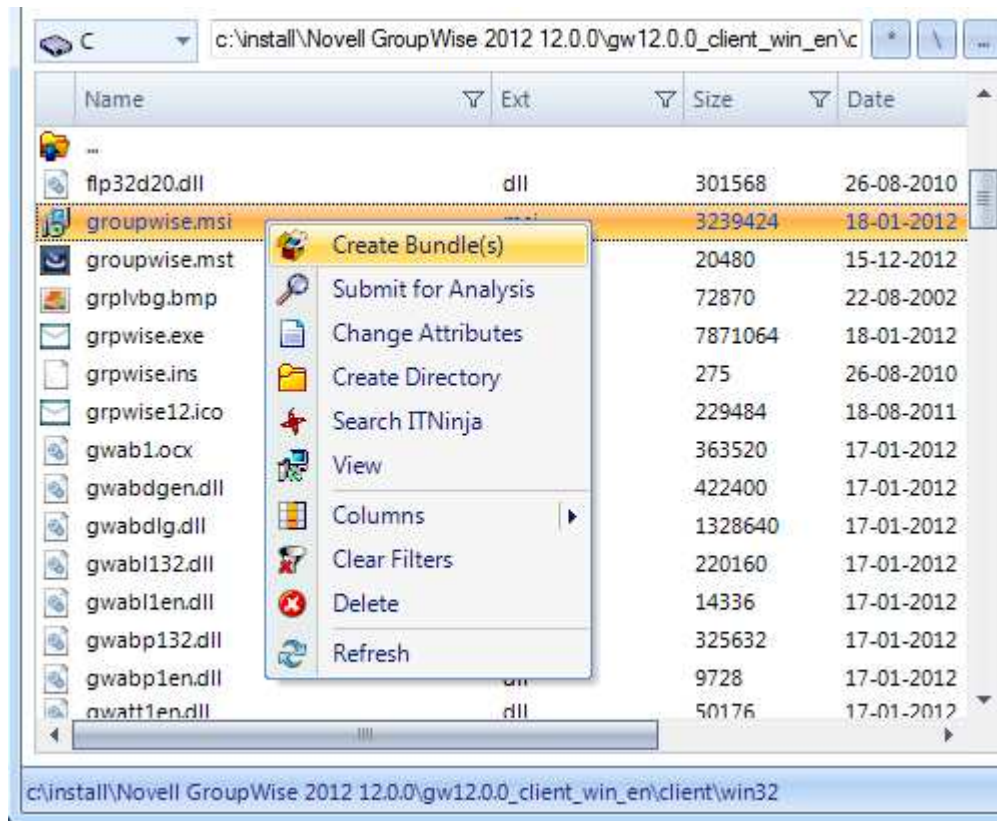
## File System

The left panel shows the directories and files of the default directory.

You can switch to a different directory by double-clicking a directory. You can switch to a different drive by clicking one of the Drive icons in the Drives ribbon group.



When you right-click a file, Bundle Commander gives you these options:

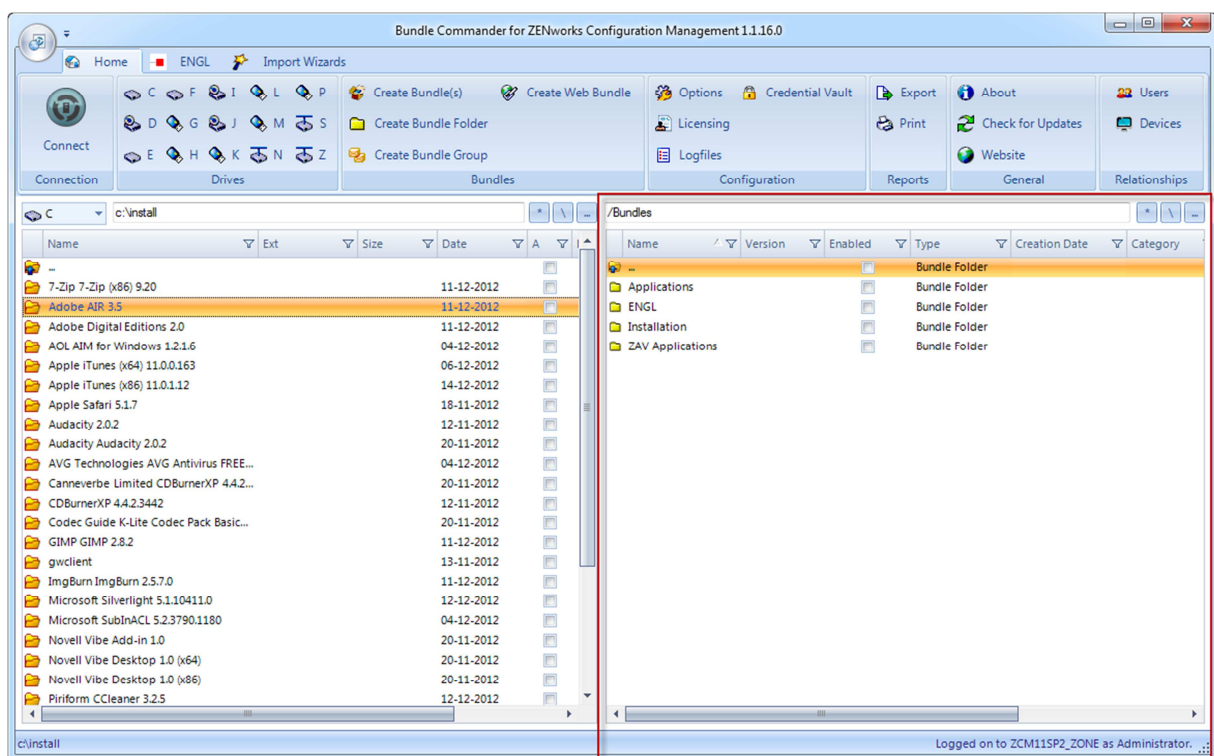


- Create Bundle(s) allows you to create a bundle out of the selected file. Bundle Commander assists and advises you based on the selected file or installer. This option is also available in the Bundles ribbon group.
- If you want to request support for a specific legacy setup that we are not supporting yet, please send us the details by selecting the setup in Bundle Commander and then selecting Submit for Analysis.
- Change Attributes allows you to change the Read, System, Archive and Hidden file attribute types.
- Create Directory creates a subdirectory in the current directory.
- Search ITNinja is available for MSI setups only. With this option, you can use the Productname and Productversion of the selected MSI setup to query <http://www.itninja.com> for more setup and deployment information. ITNinja is a rapidly growing community where IT professionals ask questions, research software and other technical topics, and share information and ideas. Founded by Bob Kelly in September of 1999, ITNinja was previously known as AppDeploy.com. As a leading destination for end point administrators to discuss topics related to setup and deployment, ITNinja expands the scope of AppDeploy, adding numerous topics while leveraging its rich application and deployment data.

- View is an MSI viewer which you can use to browse through an MSI's tables and rows.
- Columns lets you change the visibility of the columns.
- Clear Filters lets you remove filters that have been set for one or more columns.
- Delete deletes a selected file or selected files.
- Refresh updates the current directory and file list.

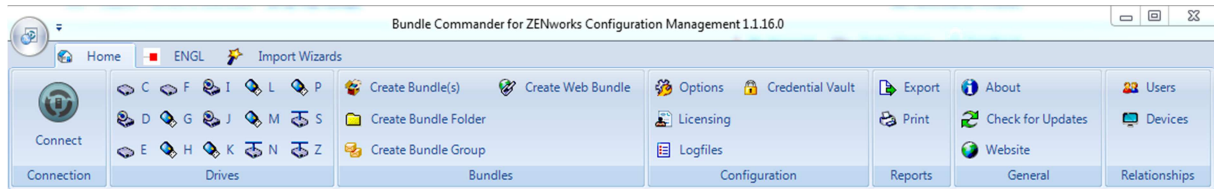
## Bundle Folders

The right panel shows the bundle folders in the connected ZENworks Management Zone as well as the bundles that are stored in these folders.



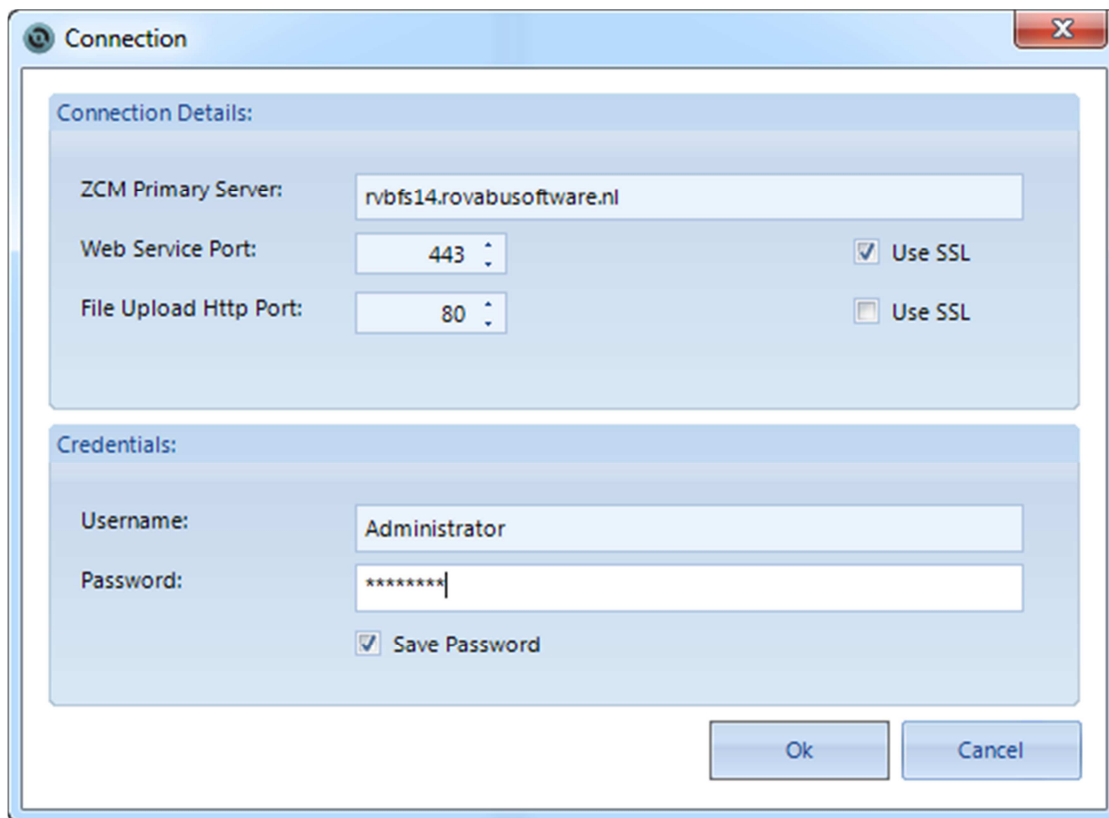
## Home

Most features in the Main screen are available through the ribbon in the upper part of the screen.



## Connection

Connect connects Bundle Commander to a specified Primary Server of a ZENworks Management Zone



## Drives

The Drives ribbon group lists all available drive letters of your file system. The icons reflect whether the drive is a local drive, a USB stick, removable drive, network drive, or CD-ROM/DVD-drive.

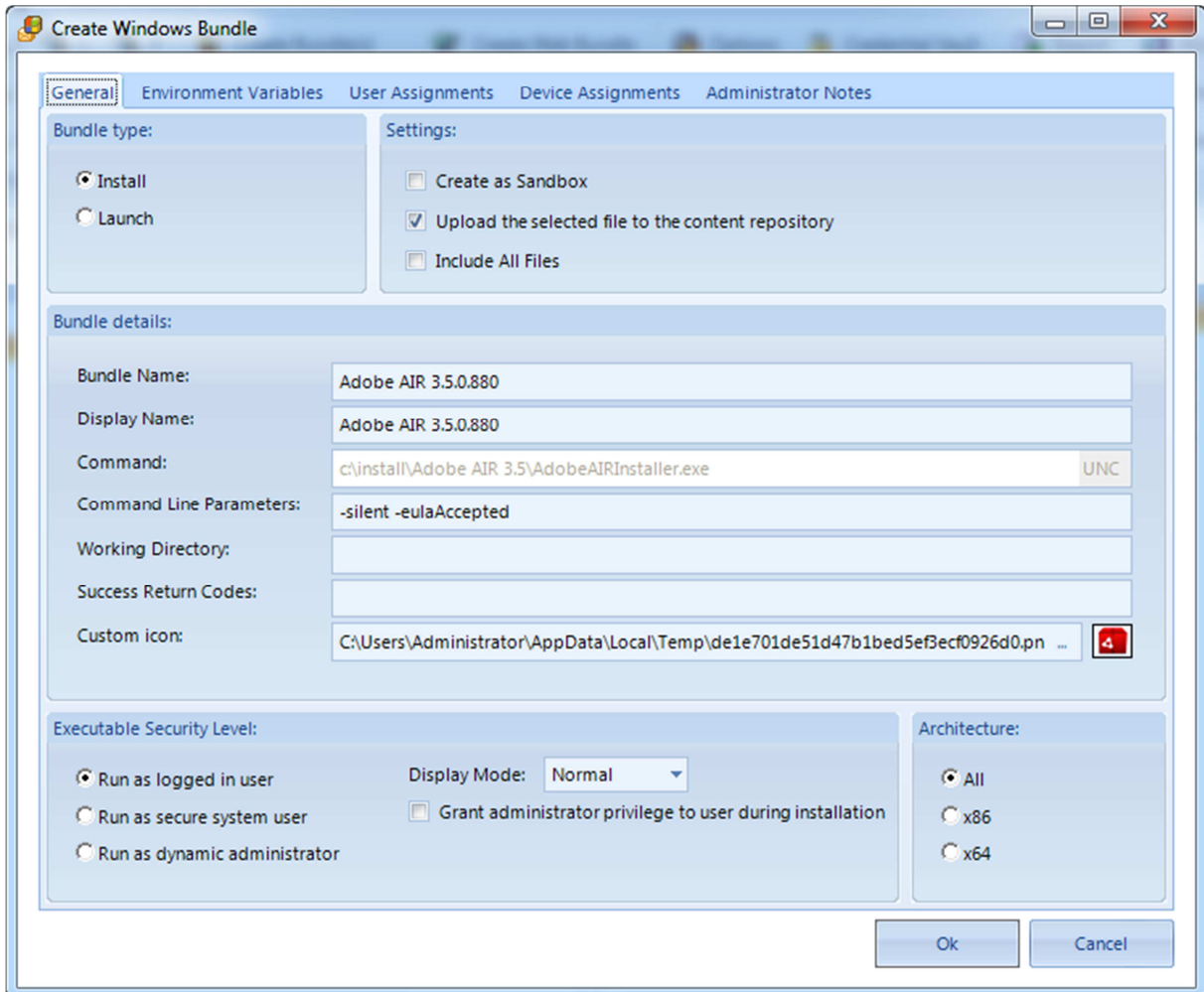


## Bundles

The Bundles ribbon group lets you create a Windows bundle, a bundle folder, a bundle group, or a Web bundle.

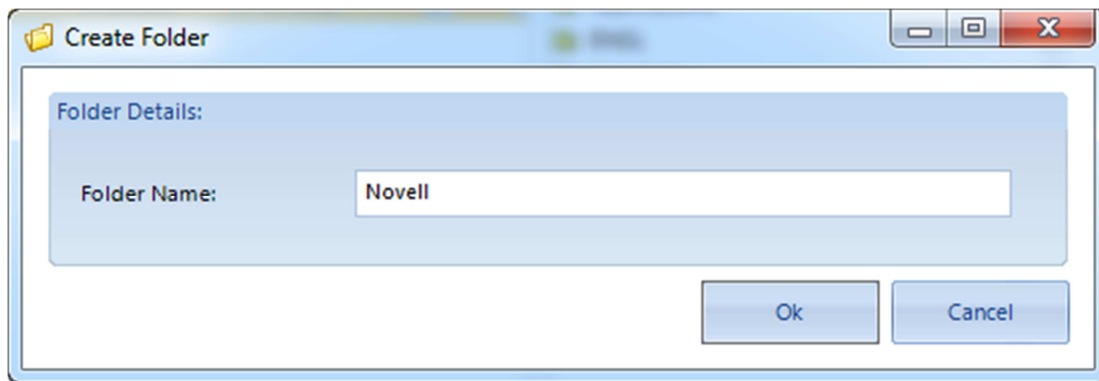
### Create Bundle(s)

Create a Windows bundle from a selected file on your file system. Depending on the type of file selected, Bundle Commander advises you to create an Install bundle or a Launch bundle for the selected file. The Bundle Type is set accordingly. For more details about creating Windows Bundles, read the "Creating Windows Bundles" chapter.



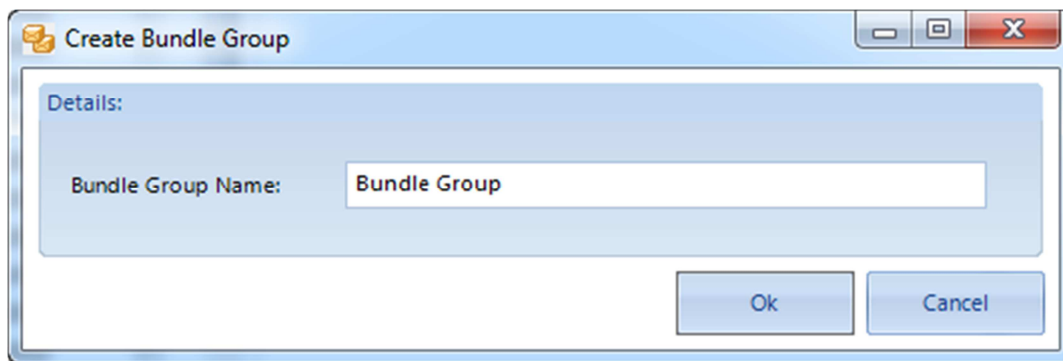
### *Create Bundle Folder*

Creates a bundle folder.



### *Create Bundle Group*

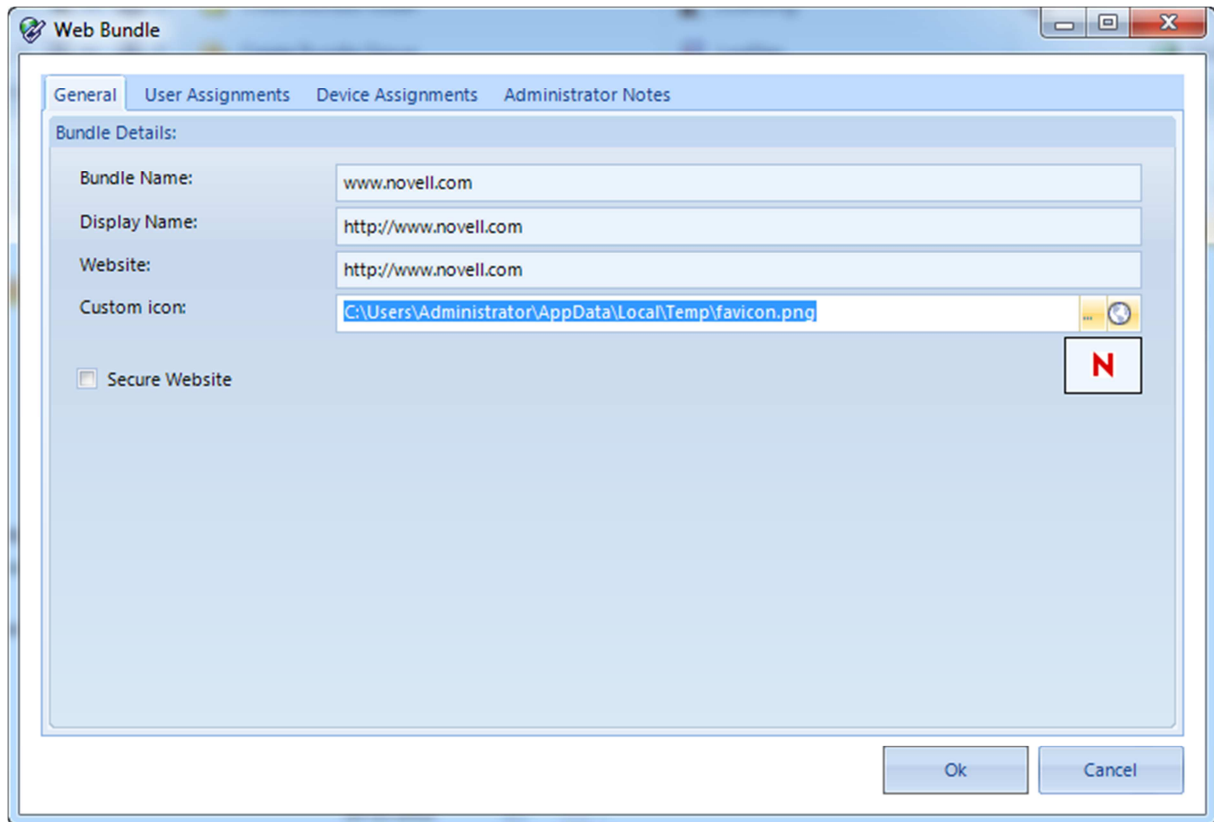
Creates a bundle group.





## Create Web Bundle

Creates a Windows bundle based on the Web Application category, with one Launch URL action.

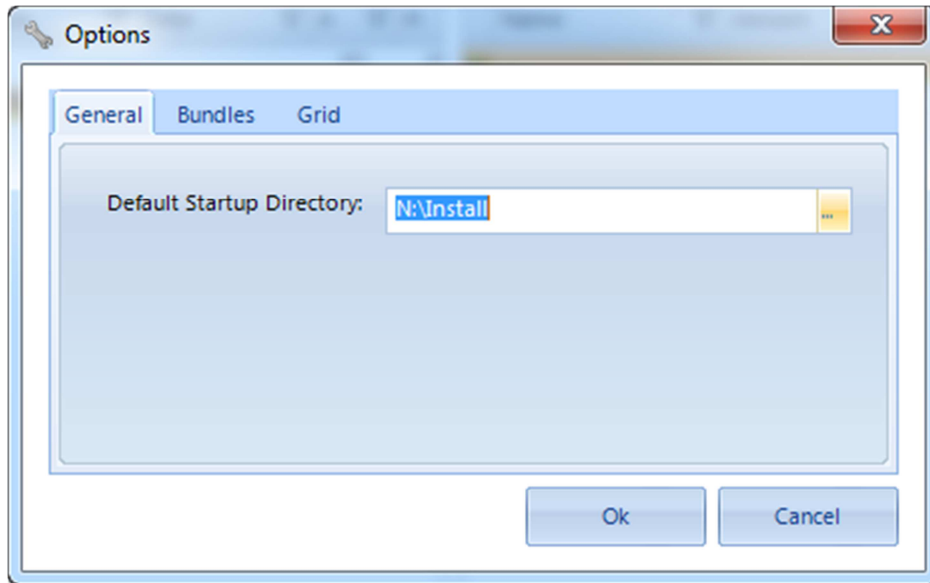


## Configuration

The Configuration ribbon group lets you configure Bundle Commander.

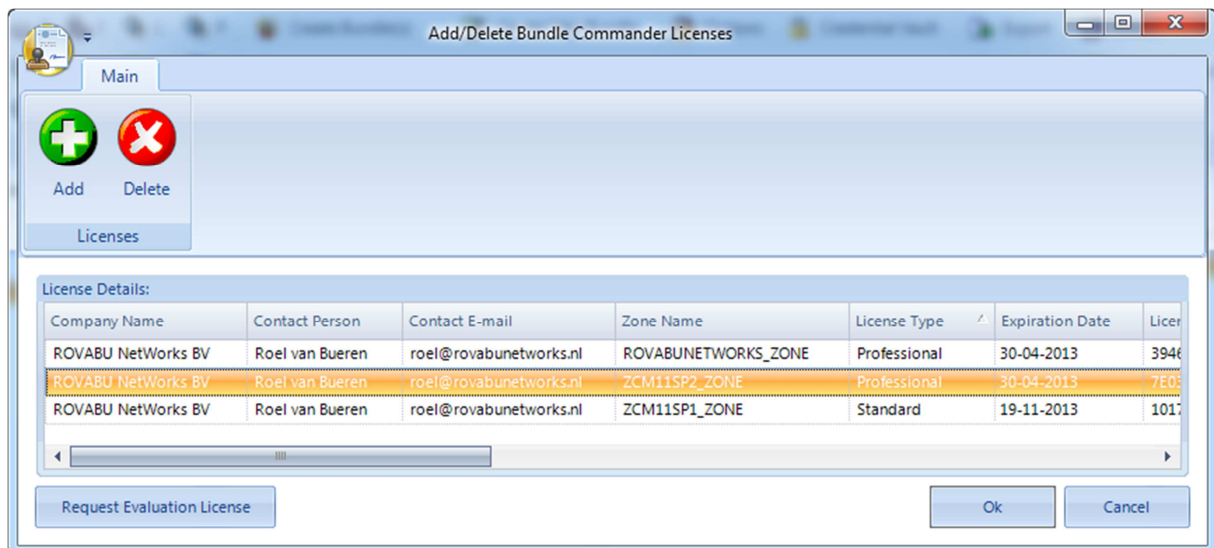
### Options

Use this option to configure the default startup directory, whether only published bundles should be shown (ZENworks 11 Configuration Management and later) and the filter row layout of the grids in the main screen.



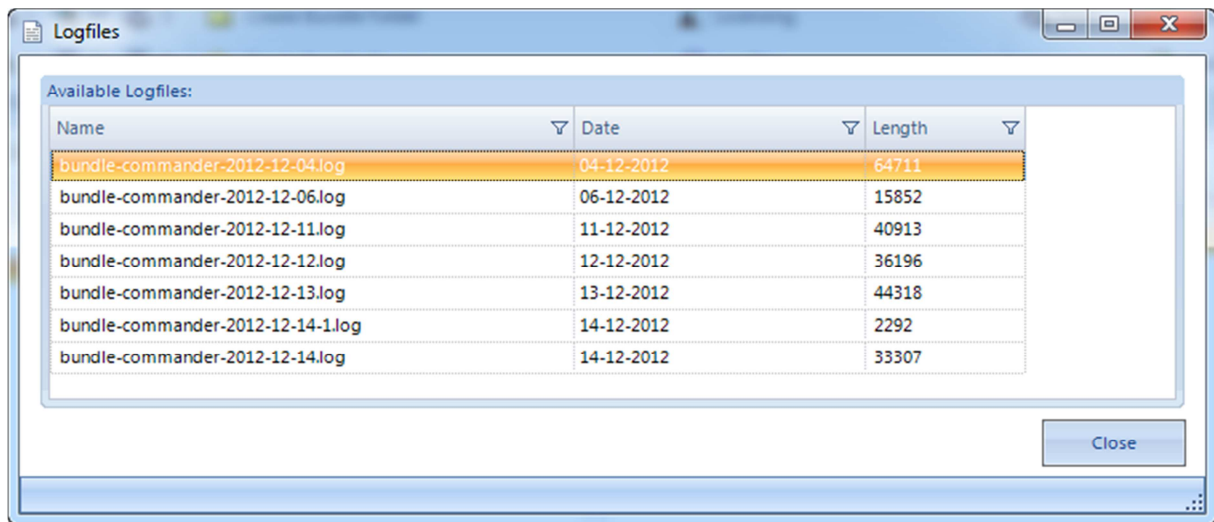
### Licensing

You can add, remove, and review licenses for Bundle Commander.



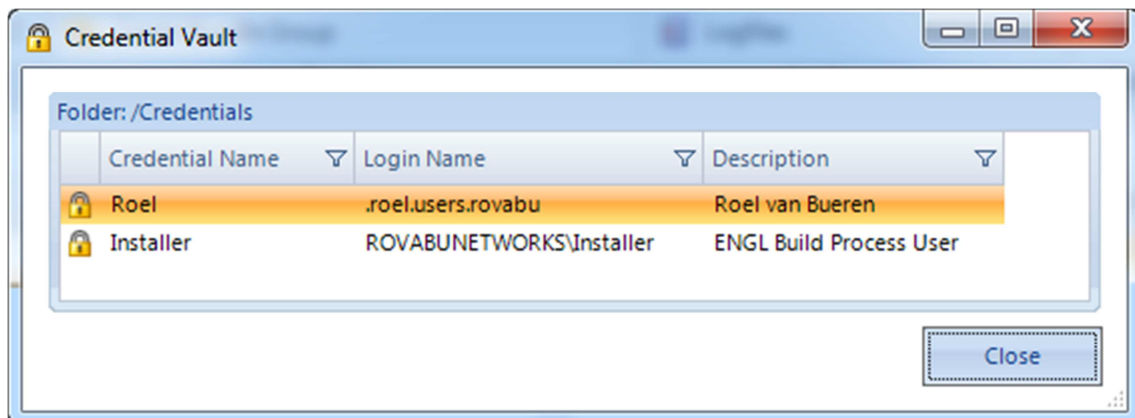
## Logfiles

When support requests log files for analysis, you can find the Bundle Commander log files in the following locations:



## Credential Vault

The ZENworks Configuration Management credential vault lets you review the Credential Vault users that have been defined in ZENworks Control Center.



## Reports

The Reports ribbon group covers exporting the selected directory or the selected bundle folder to Excel, PDF, XPS, or TXT format, or to print it to a selected printer.

### Export

Exports a selected directory or a selected bundle folder to Excel, Excel 2007/2010, Adobe PDF, Microsoft XPS, or text format.

### Print

Prints a selected directory or a selected bundle folder to a selected printer.

## General

The General ribbon group lets you check the About settings for updates or to visit the Bundle Commander Web site.

### About

The About section includes general remarks about Bundle Commander, release notes, and a link to the support forums.

### Check for updates

On startup, Bundle Commander automatically checks whether a new build is available. You can also do this manually by using Check for updates.

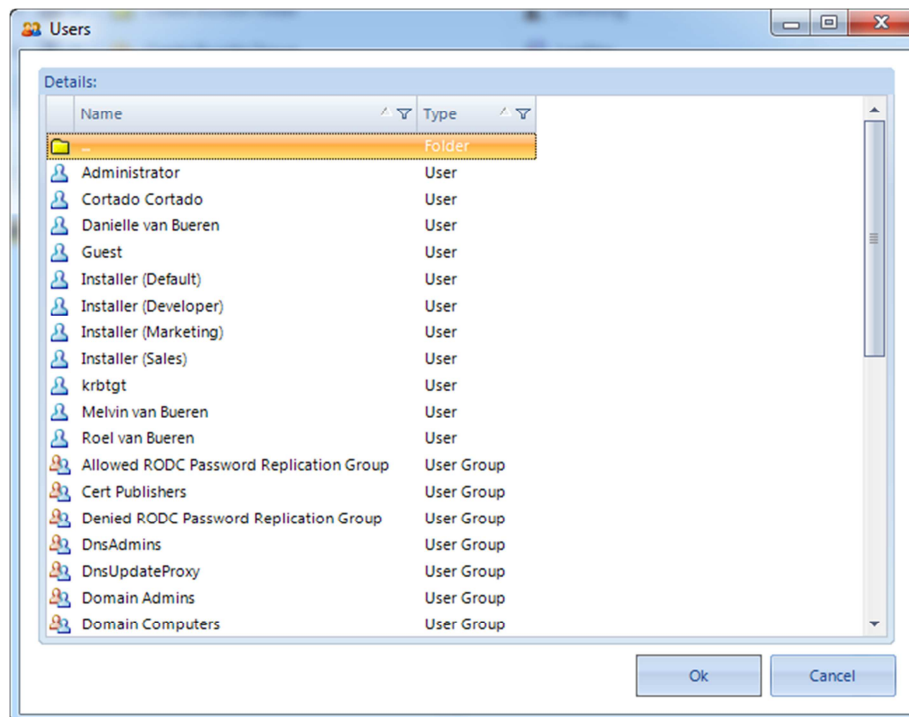
### Website

Links to the Bundle Commander Web site (<http://www.bundlecommander.com>).

## Relationships

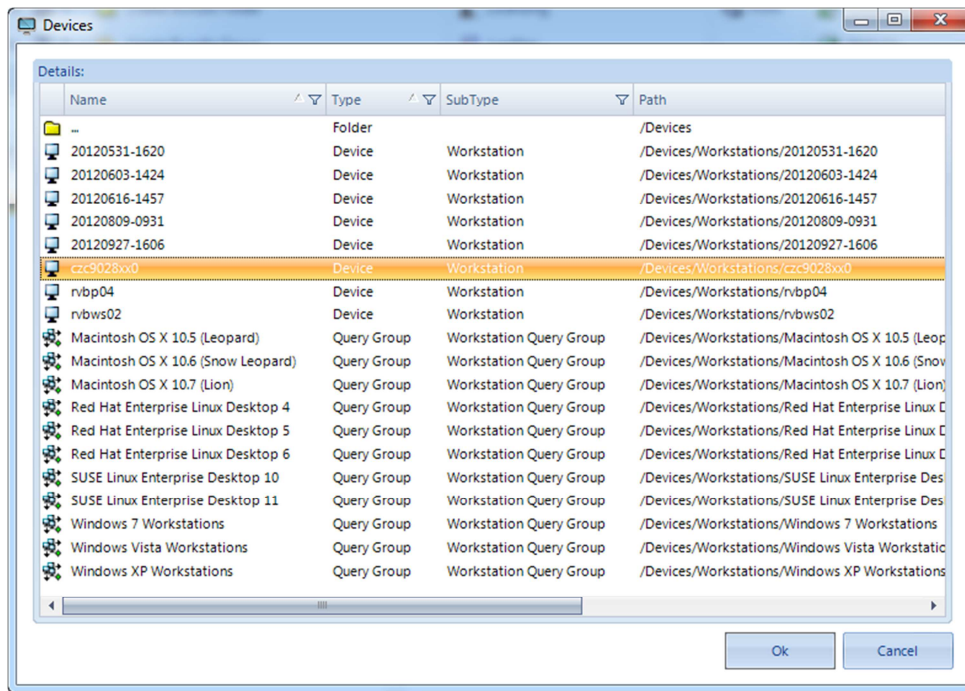
### Users

Allows you to review all available users by browsing through the user sources that have been defined in ZENworks Control Center.



### Devices

Allows you to review all devices that are available in the connected ZENworks Management Zone.



## ENGL

---

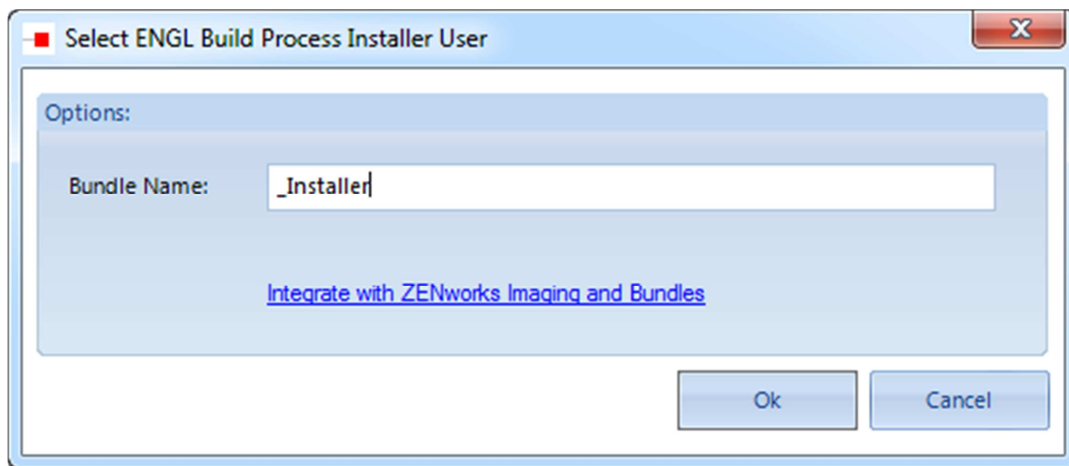
ENGL Imaging Toolkit for Novell ZENworks is an automated deployment solution for Windows 7, Vista, XP, Windows Server 2008/R2, and Windows Server 2003. Imaging Toolkit includes hardware-independent imaging, OEM driver management, automated repeatable build process, Novell Client and ZENworks Agent installation, ZENworks and Active Directory registration, application installation, and customization.

The Bundle Commander team and ENGL teamed up to work on a first integration between Bundle Commander, ZENworks Configuration Management, and ENGL Imaging Toolkit. This integration is useful for customers who want to use multiple Installation profiles for installing Windows applications during the ENGL build process.

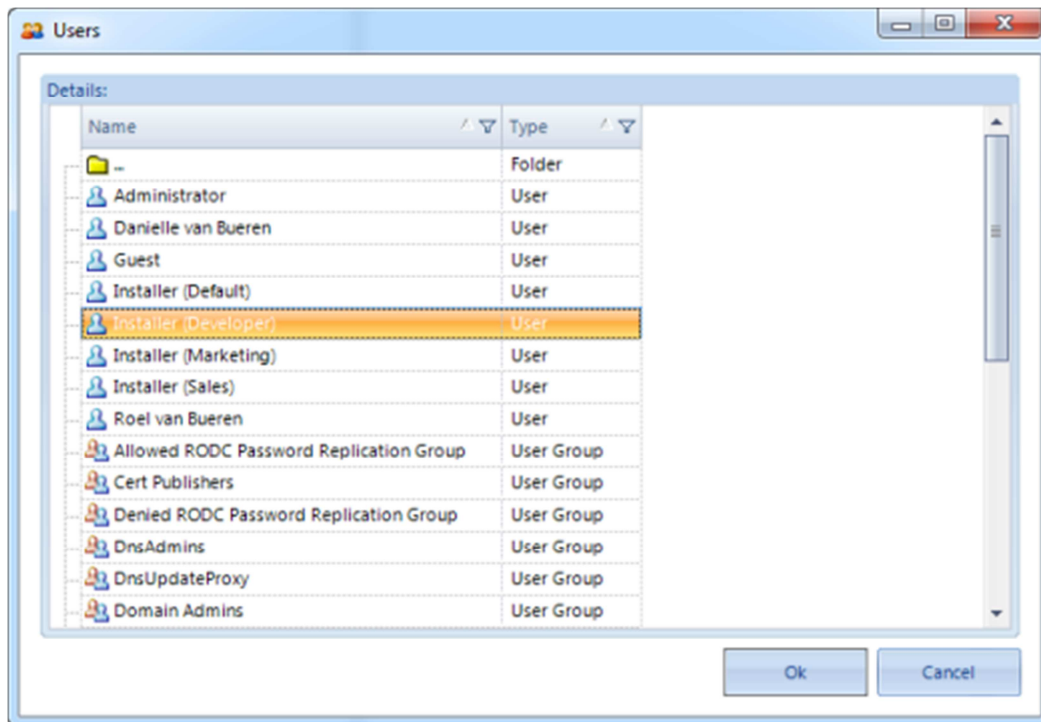
Imaging Toolkit's build process provides integration with ZENworks Configuration Management to install selected Windows bundles during ENGL's build process. You can use the Create Build Process Bundles option to create two Windows bundles related to ENGL Imaging Toolkit's build process.

You do this by using a preconfigured ENGL Installer user and an \_Installer Windows bundle that you can assign bundles to. The user is then used to log in during ENGL's build process in order to install applications you want to be installed by default after the build process has been finished.

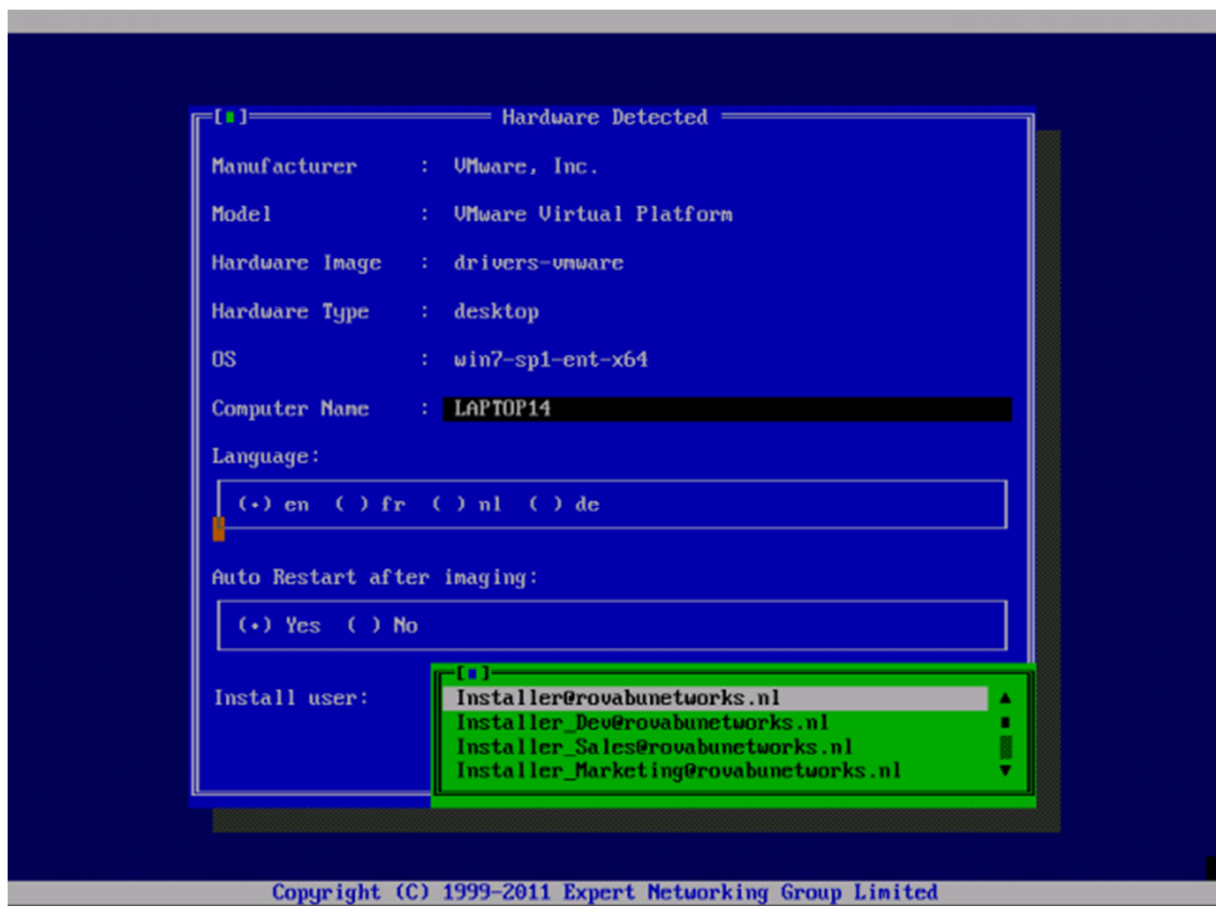
Bundle Commander provides the ability to create the default ENGL Bundle Folder and \_Installer user, similar to what the ENGL's Integration Wizard does. It also provides the option to create different \_Installer bundles for the ENGL Build process:



These bundles can then be assigned to a selected Installer user:



By extending both ZIM (ENGL's Secure Imaging front-end menu system) as well as configuring a variable ENGL build process Installer user, the ZENworks administrator can select which Installer user is used for the Imaging Build process:



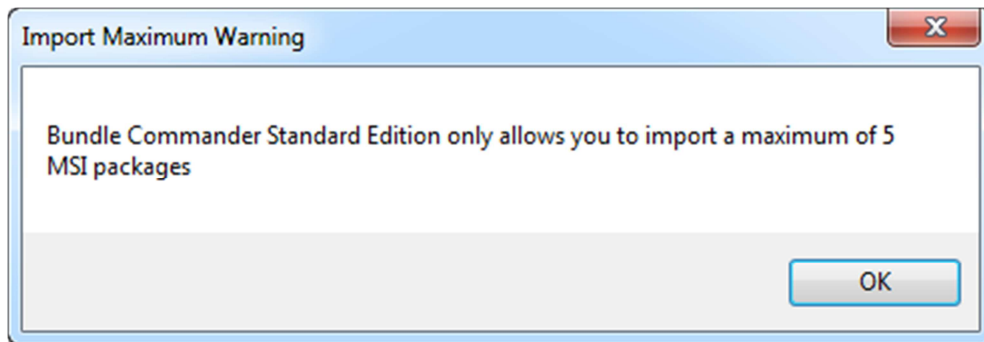
## Import Wizards

### Import MSIs

#### *The Generic MSI Import Wizard*

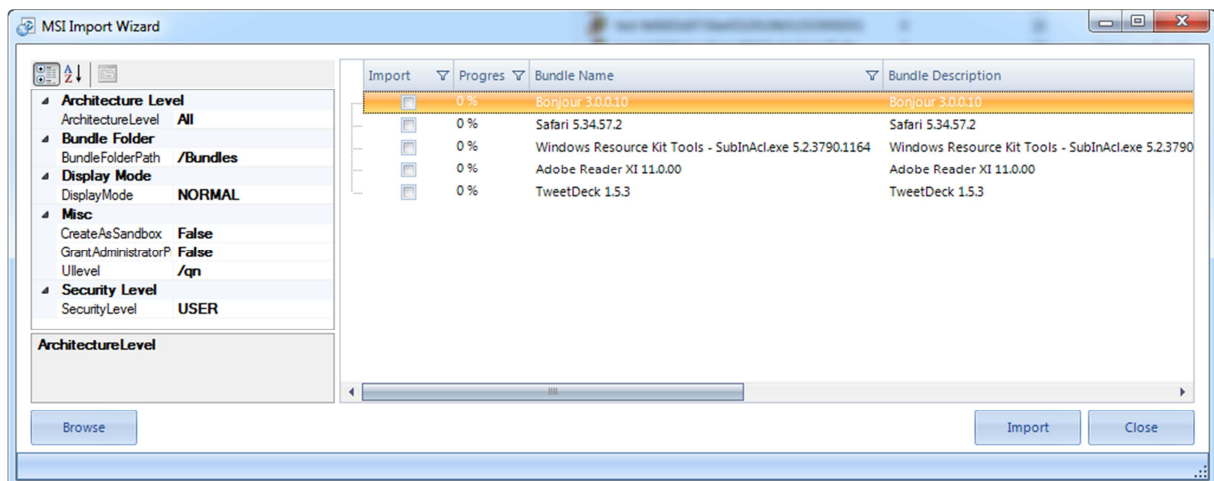
The generic MSI import Wizard lets you select a directory in which multiple MSI packages have been stored. The best practice is to have a separate subdirectory per software product.

Bundle Commander Standard Edition lets you import a maximum of five packages:



The Professional Edition does not have this limitation.

Click the Browse button in the upper left corner of the MSI Import Wizard in order to select the directory with MSI packages you want to import.



When the MSI packages have been listed in the grid, click Import to import the packages.



Use the Property grid to configure how you want the Windows bundles to be created.

|                             |          |
|-----------------------------|----------|
| <b>Architecture Level</b>   |          |
| ArchitectureLevel           | All      |
| <b>Bundle Folder</b>        |          |
| BundleFolderPath            | /Bundles |
| <b>Display Mode</b>         |          |
| DisplayMode                 | NORMAL   |
| <b>Misc</b>                 |          |
| CreateAsSandbox             | False    |
| GrantAdministratorPrivilege | False    |
| UILevel                     | /qn      |
| <b>Security Level</b>       |          |
| SecurityLevel               | USER     |

#### *Architecture Level*

Adds an ARCHITECTURE=x86 requirement to the Windows bundle when the value is set to X86.

Adds an ARCHITECTURE=x64 requirement to the Windows bundle when the value is set to X64.

Adds no ARCHITECTURE requirement when the value is set to All.

#### *Bundle Folder*

Determines the bundle folder where the Windows bundles are created.

#### *Display Mode*

Determines the Display Mode for the executable security level that is used for the Install MSI action of the Windows bundle that is created.

#### *CreateAsSandbox*

Determines whether the Windows bundle is created in a Sandbox first. This feature is only available in ZENworks Configuration Management 11.x.

#### *GrantAdministratorPrivilege*

Determines if administrator privileges are granted to the user during the Install MSI action for the Windows bundle that is created.

#### *UILevel*

The quiet parameter setting that is used for the Install, Uninstall and Repair parameters for msiexec.

#### *Security Level*

Determines the executable security level for the Install MSI action of the Windows bundle that is created.

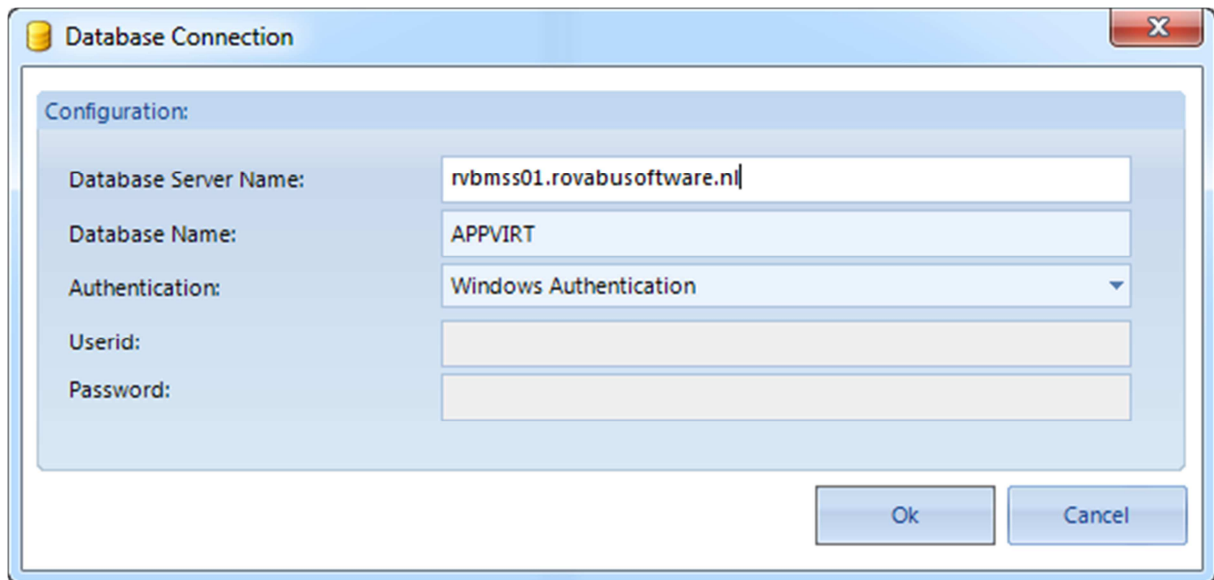
#### *The Packaging Robot Import Wizard*

The Packaging Robot Import Wizard is similar to the generic MSI Import Wizard. The bundle name and bundle description are composed differently.

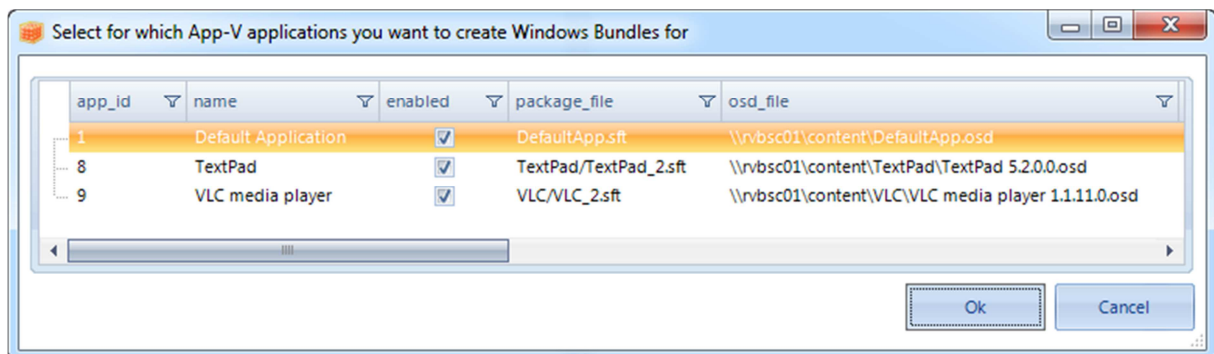
## Import Virtual Applications

### *The App-V Import Wizard*

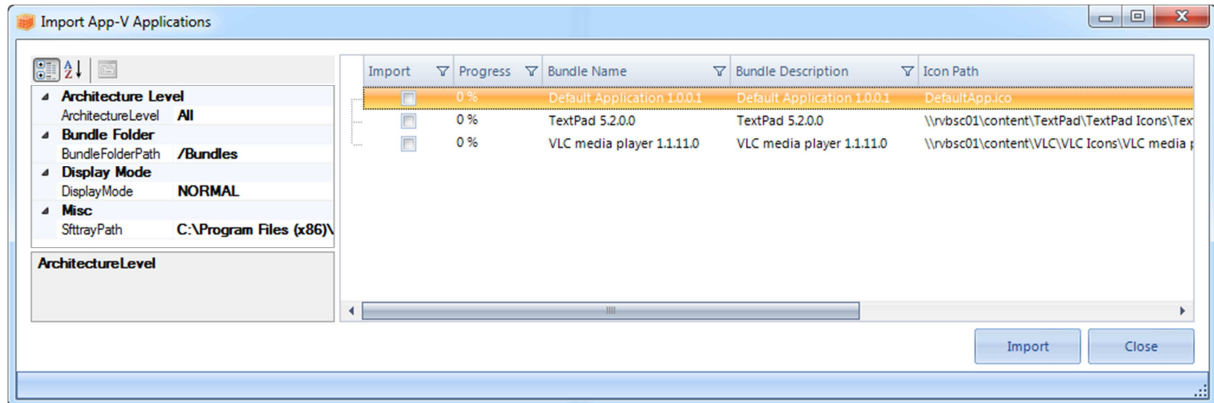
The App-V Import Wizard is only available in the Professional Edition. It supports creating Windows Launch bundles for App-V 4.6 applications. You can use the App-V Import Wizard to connect to the Application Virtualization Database on the database server you have configured during installation of your App-V server.



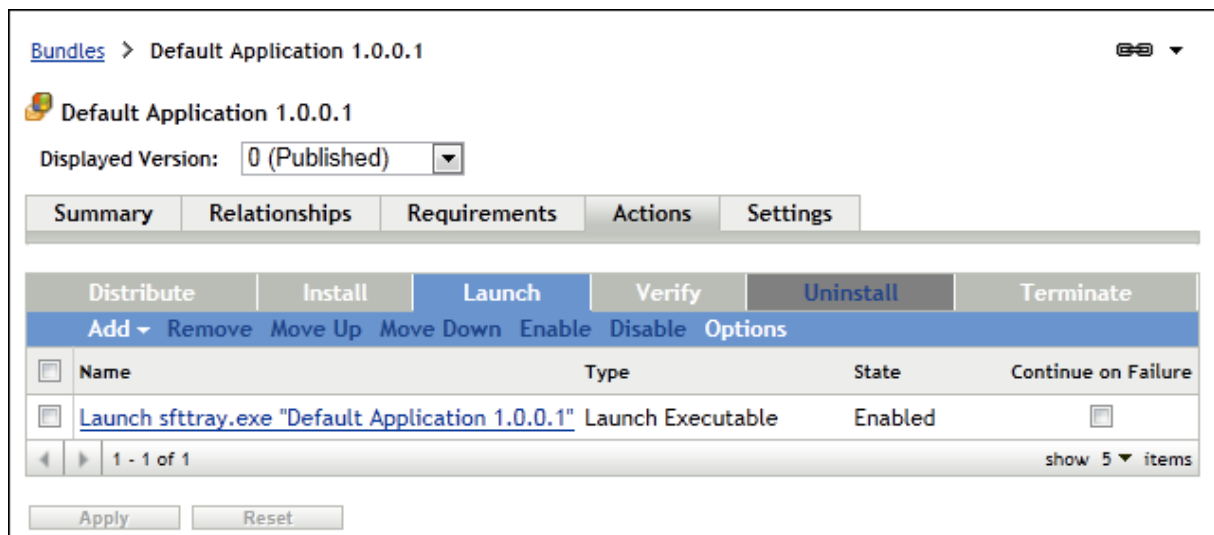
All App-V applications that are available in the Application Virtualization Database are shown. Select the applications for which you want to create Launch bundles, then click Ok:



The Import App-V Application screen then shows the suggested bundle name and bundle description for every selected App-V application. The information is extracted from the App-V OSD file, and the App-V icon is used as an icon for the Windows bundle. When you want to change the name or description, you can click each cell and make changes accordingly. After selecting the Import check box for every bundle you want to create, click Import and the Launch bundles are created:



The Launch bundles that have been created have one Launch action each. The name of every Launch action is derived from the selected App-V application:



The action details show how the correct parameters for `sftray.exe` are configured:

**Edit Action - Launch Executable** [?] [X]

Action Name: \*

**General** | **Advanced** | **Launch Options** | **Requirements**

Command: \*

Command Line Parameters:

Working Directory:

Success Return Codes:   
*Codes separated by commas (e.g. 1,2,3)*

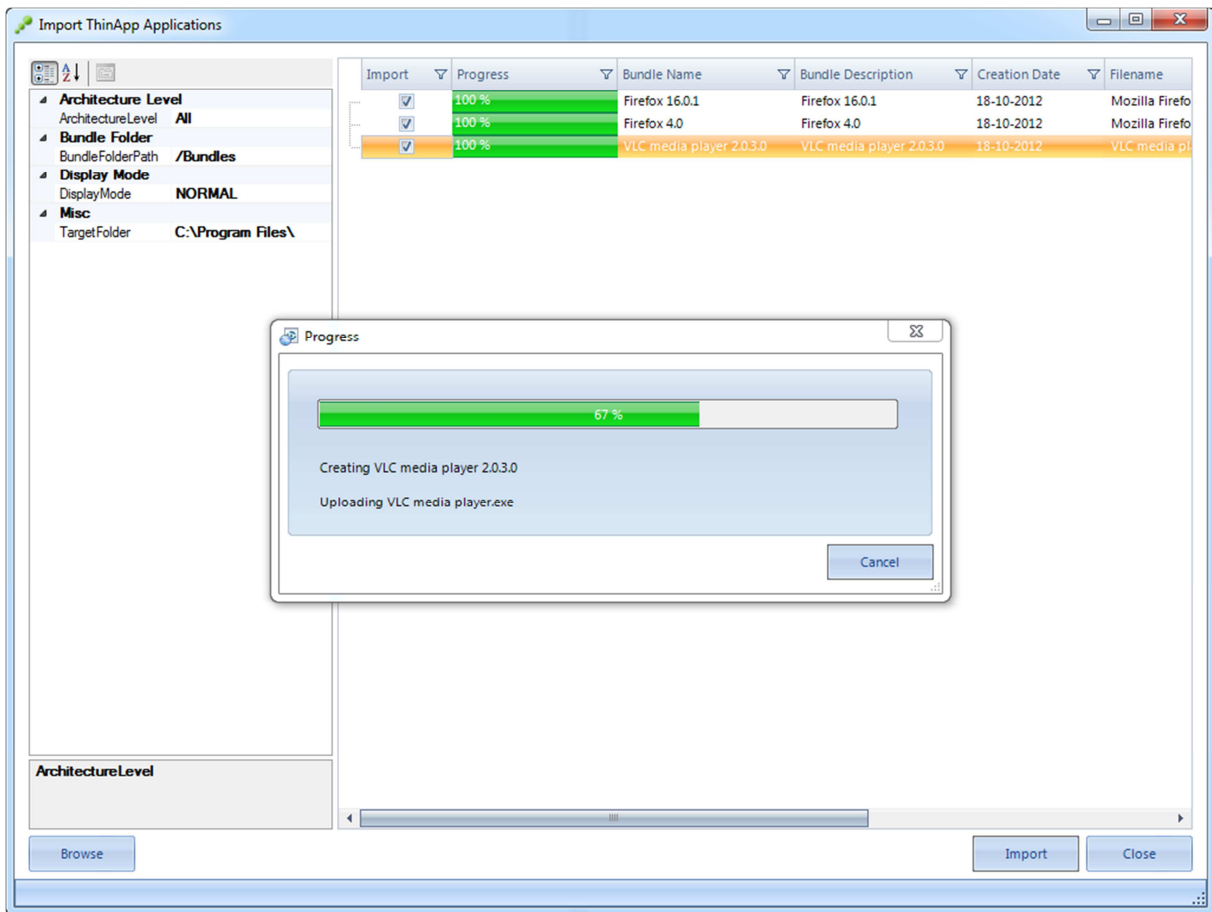
**Environment Variables**  
Add Remove Edit

| <input type="checkbox"/> | Name | Value |
|--------------------------|------|-------|
| No items available.      |      |       |

Fields marked with an asterisk are required.

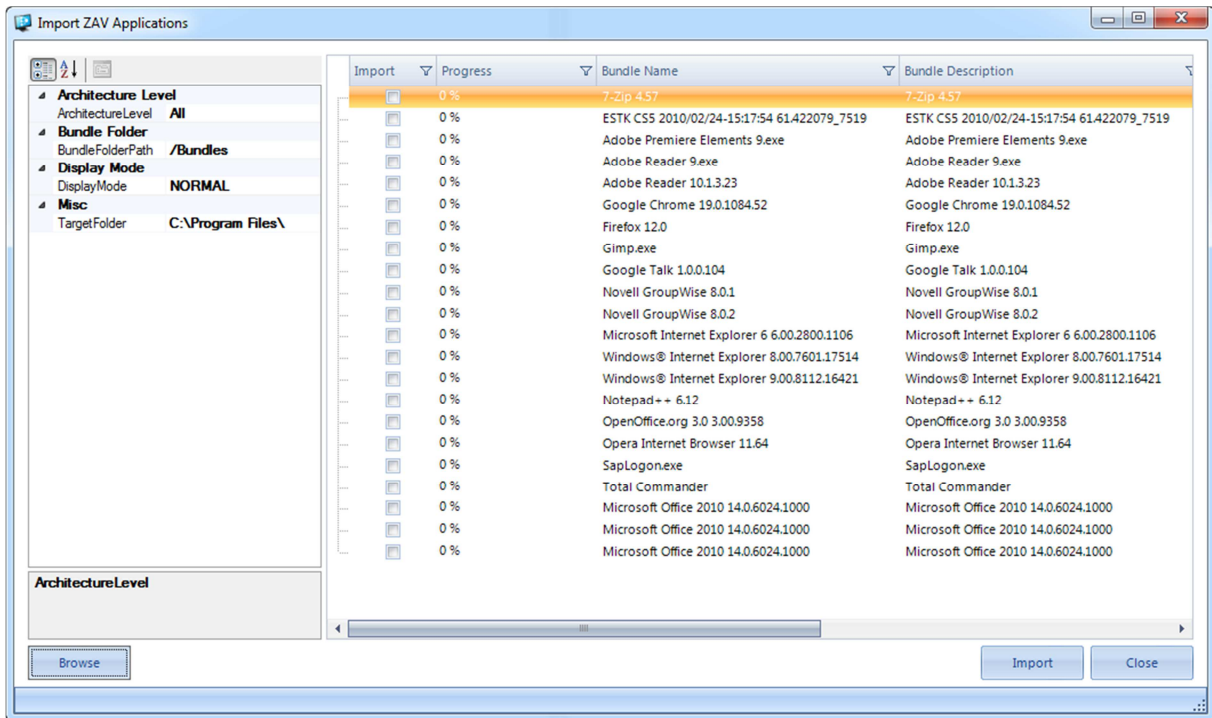
## The ThinApp Import Wizard

The ThinApp Import Wizard is only available in the Professional Edition. It lets you mass import virtual applications created by VMware ThinApp:



## The ZAV Import Wizard

The ZENworks Application Virtualization (ZAV) Import Wizard is only available in the Professional Edition. It lets you mass import virtual applications created by ZENworks Application Virtualization:



## Creating Windows Bundles (MSI)

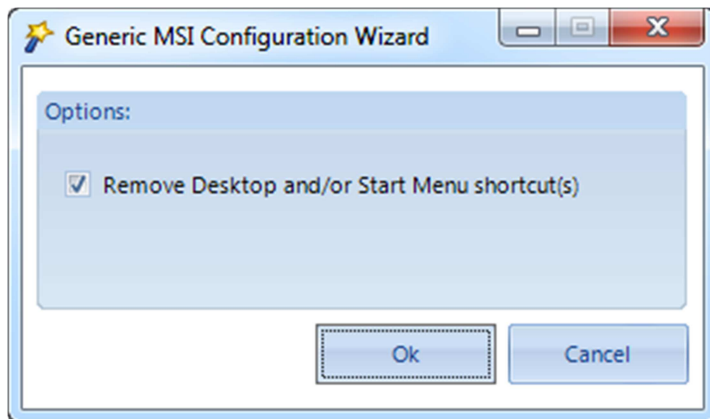
---

### General

With Bundle Commander, you can quickly and intuitively create a Windows bundle from a selected MSI package. For the Novell GroupWise Client, Novell Vibe Desktop, and Novell Filr, configuration wizards are also available.

Bundle Commander Professional Edition has multiple configuration wizards for applications such as Adobe AIR, Flash, Reader, and Acrobat, and VMware View, Player, and Workstation. For the most current list of configuration wizards, please visit our Web site.

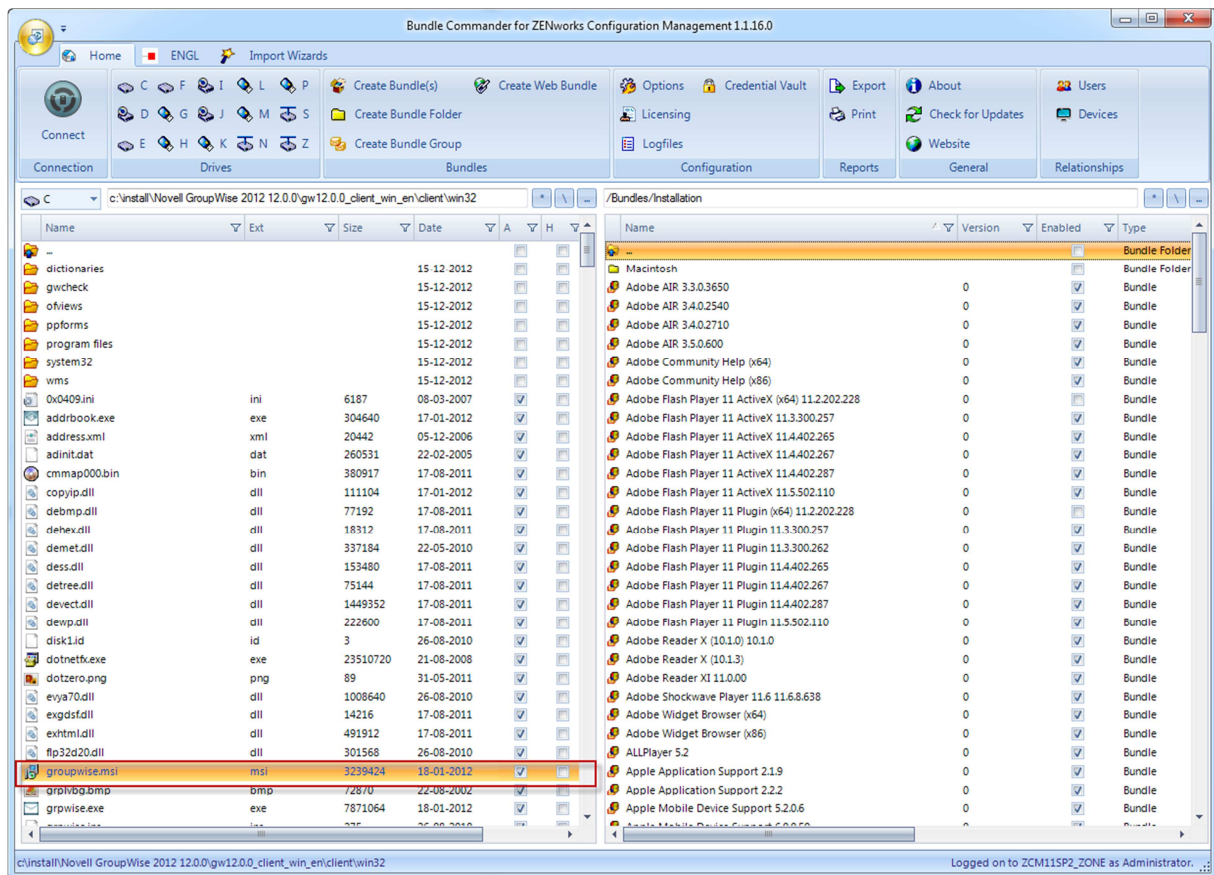
Bundle Commander Professional Edition also has a generic MSI Configuration Wizard. This wizard is shown when a selected MSI setup has shortcuts to be installed. Those non-managed shortcuts can optionally be removed by using the option to remove desktop and Start menu shortcuts in the wizard. The non-managed shortcuts can then be replaced with Launch bundles.



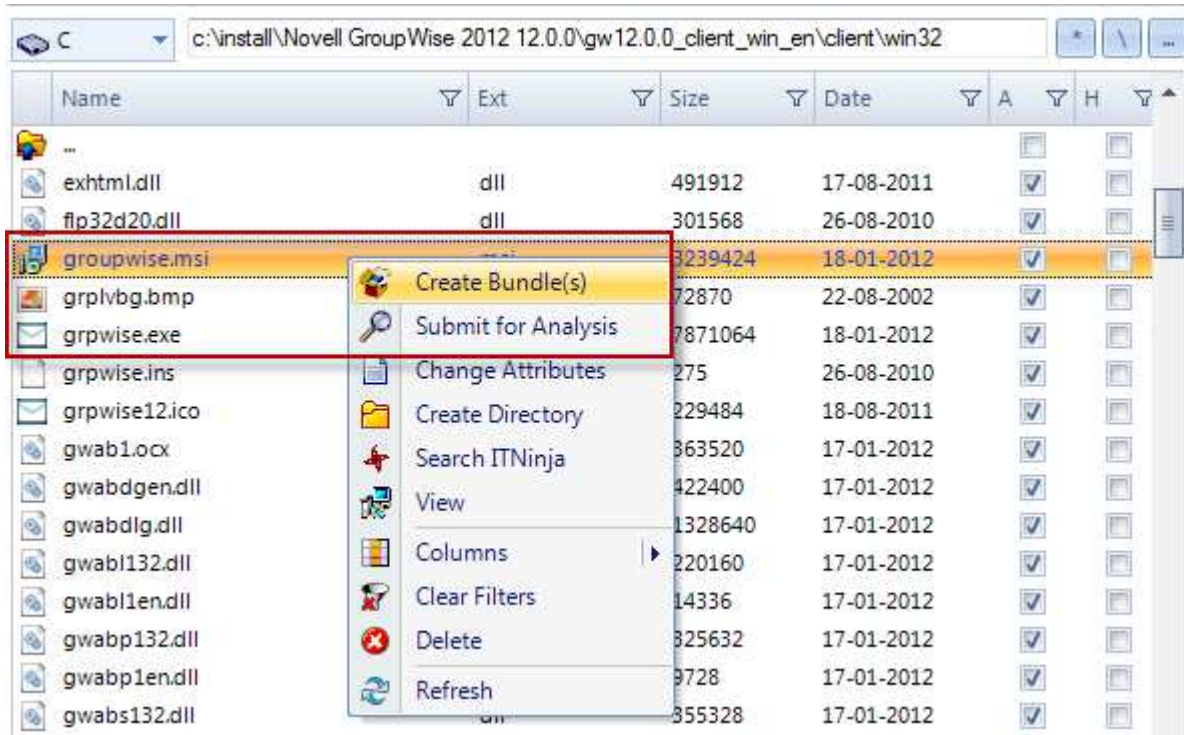
## GroupWise 2012

The gw12.0.0\_client\_win\_en.exe client that is available through the Novell download Web site is a 7-Zip self-extracting archive with the actual setup files embedded in it. You must extract the setup files first by either using an archive utility like WinZIP or WinRAR or by copying it out of your temporary directory `c:\Users\\AppData\Local\Temp` after you run this setup.

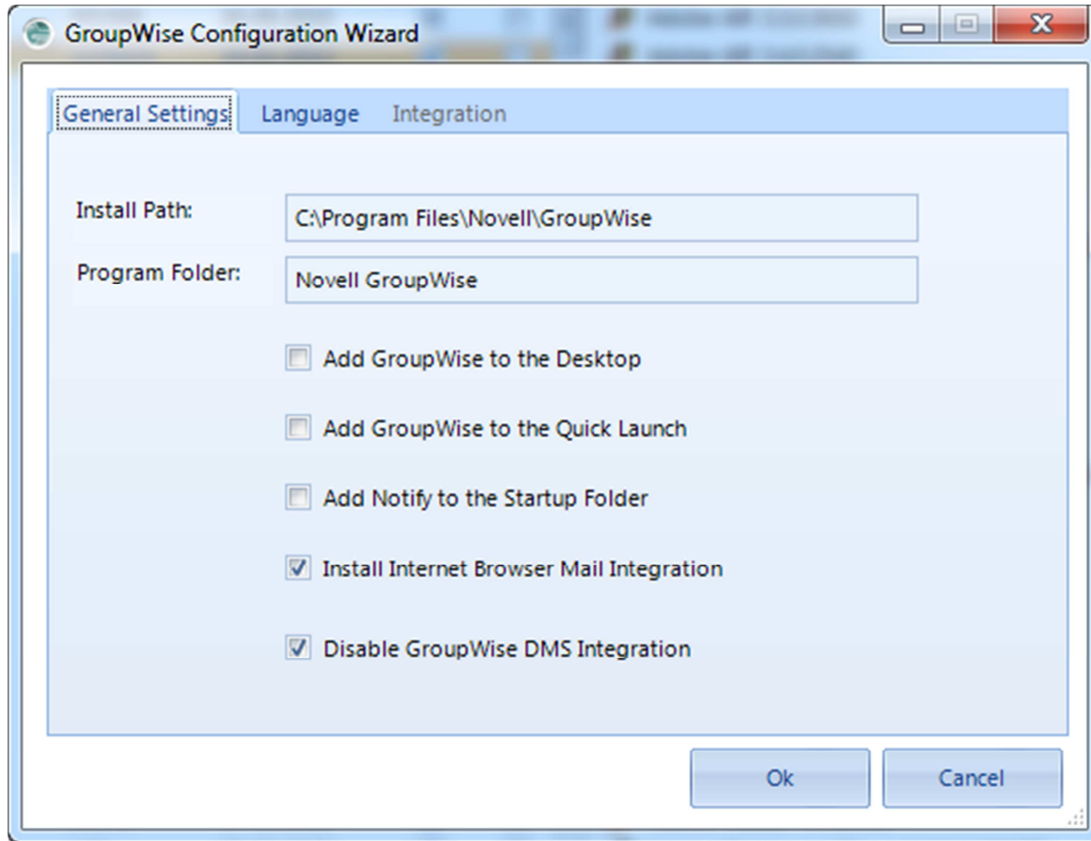
To use the GroupWise Configuration Wizard provided by the Bundle Commander Standard Edition, select the `groupwise.msi` MSI package (stored in the `.\client\win32\` directory), then click the Create Bundle(s) button on the ribbon bar, or right-click the package and select Create Bundle(s) from the context menu.



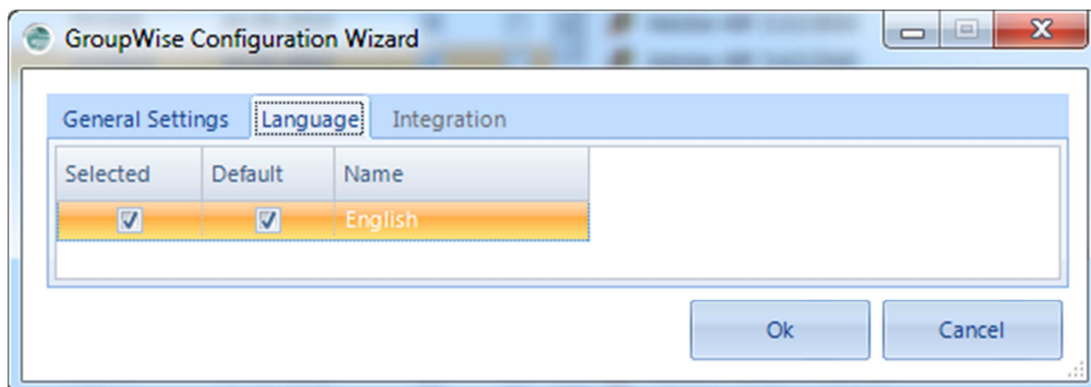




Bundle Commander matches this MSI setup with the GroupWise Configuration Wizard. You use the Configuration Wizard to configure the installation path; the program folder on the Start menu; whether shortcuts should be created on the desktop, Quick Launch, and in the Startup Folder; whether Internet browser mail integration should be installed; and whether GroupWise Document Management should be enabled.

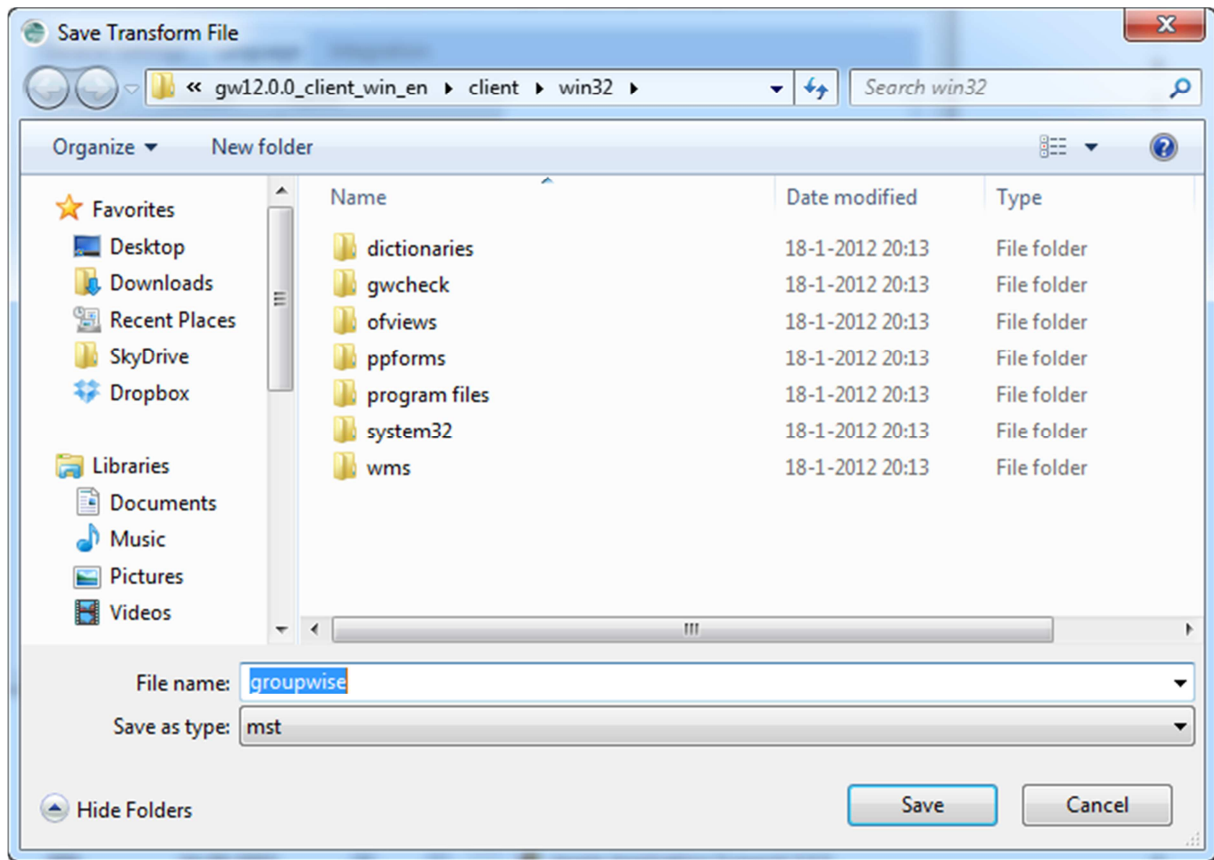


The Language tab has the option to select which languages you want to install and which language should be the default. This is applicable if you deploy the multi-lingual version of the GroupWise 2012 client.



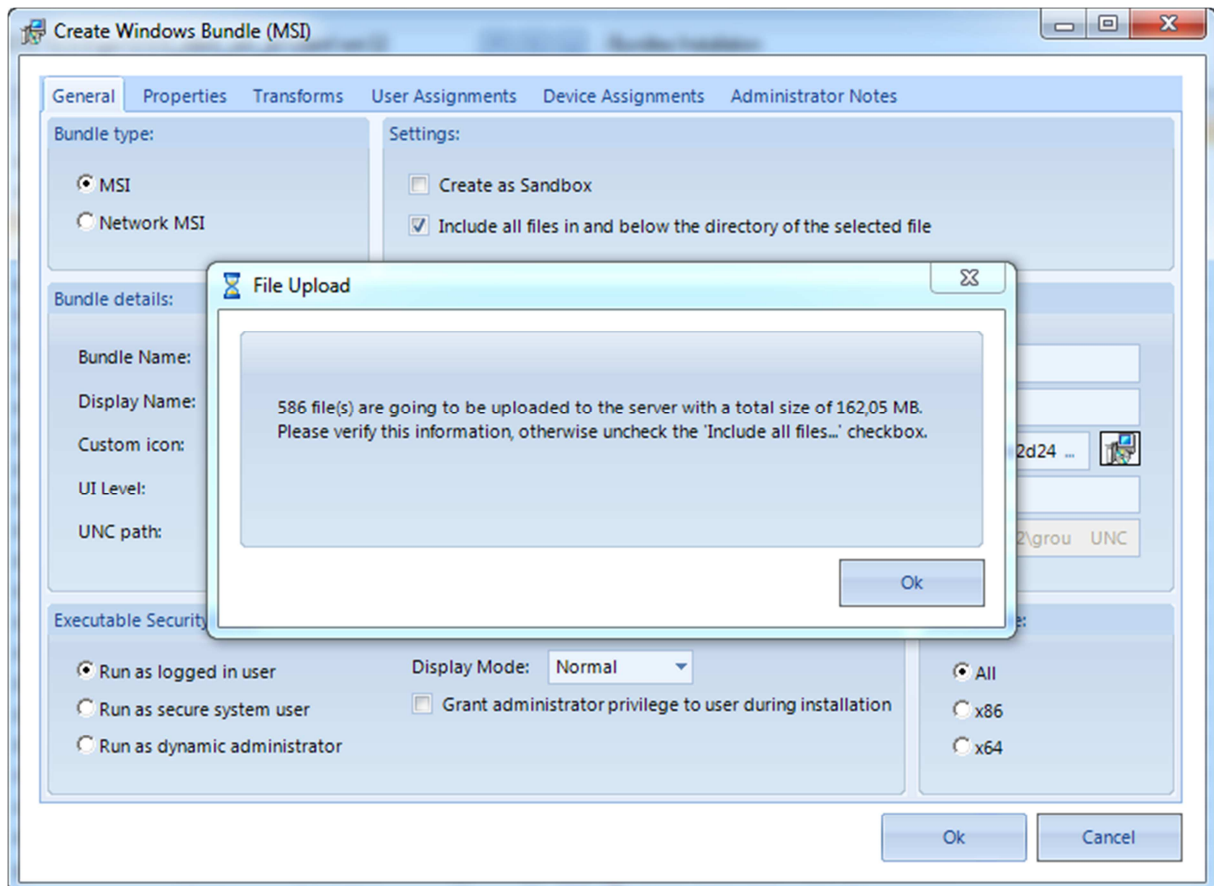
When you have reviewed all settings, click Ok.

All Configuration Wizard settings must be saved in an MSI transform file. In the Save Transform File dialog box, you can use the default MSI transform file name or choose a different file name, then click Save.



After the MSI transform file has been successfully saved, the Create Windows Bundle (MSI) dialog box is shown. Because the selected GroupWise.MSI is an uncompressed MSI package (which means all files needed for the installation have been stored separately), the option to include all files in and below the directory is automatically selected.

The File Upload screen is shown on top of the Create Windows Bundle (MSI) screen. This screen informs you about the number of files and their total size. Review the information, then click Ok:



The Create Windows Bundle (MSI) screen has different tabs.

## *General*

### *Bundle Type*

For Bundle Type, select either MSI or Network MSI.

Selecting MSI adds one Install MSI action to the Windows bundle to install the selected MSI from the ZENworks Content Repository.

Selecting Network MSI adds one Install MSI action to install the MSI using the network path of the selected MSI.

### *Settings*

Create as a Sandbox creates the Windows bundle in a sandbox first.

The Include all files in and below the directory of the selected file option uploads all files for the selected MSI into the content repository.

### *Bundle Details*

Bundle Name shows a suggested bundle name, which can be edited if needed.

Display Name shows a suggested bundle display name, which can be edited if needed.

Custom Icon shows the default icon of the selected MSI package.

UI Level shows the MSIexec quiet switch settings that are suggested for the MSI installation.

UNC Path only appears when you set the Bundle Type to Network MSI. You can convert a drive mapping to UNC notation by using the UNC button.

### *Executable Security Level*

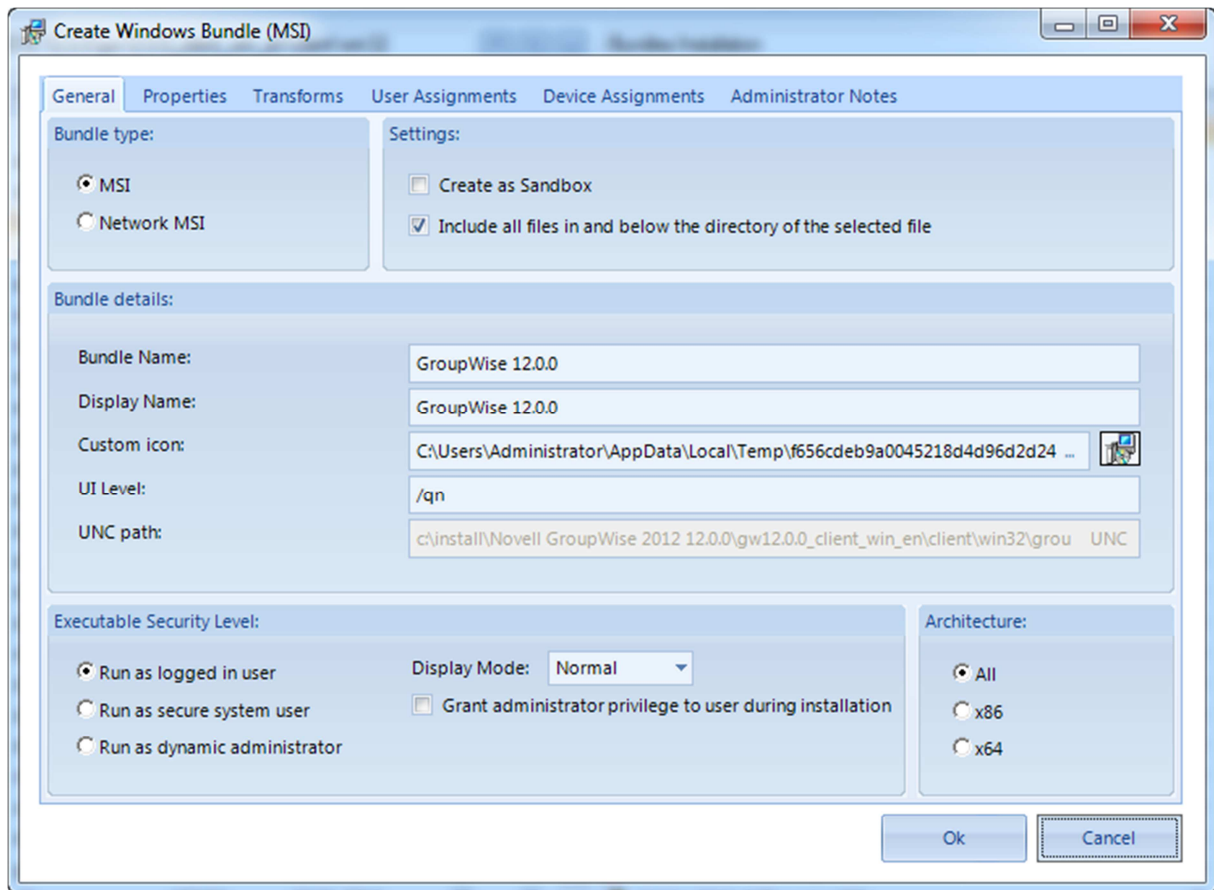
Use this option to set the executable security level for the Install MSI action that is added to the Windows bundle.

### *Architecture*

Adds an ARCHITECTURE=x86 requirement to the Windows bundle when the value is set to X86.

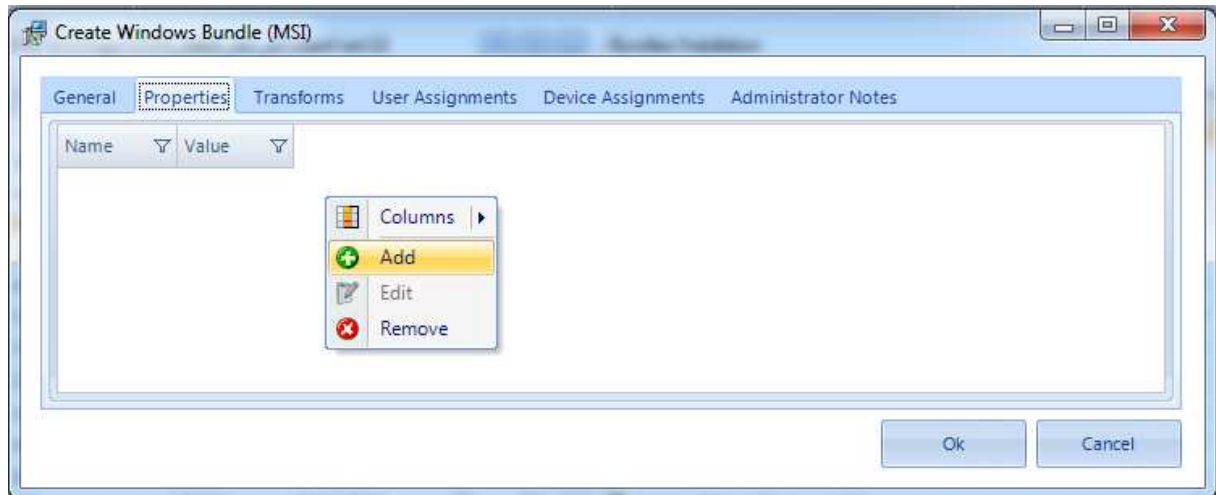
Adds an ARCHITECTURE=x64 requirement to the Windows bundle when the value is set to X64.

Adds no ARCHITECTURE requirement when the value is set to All.



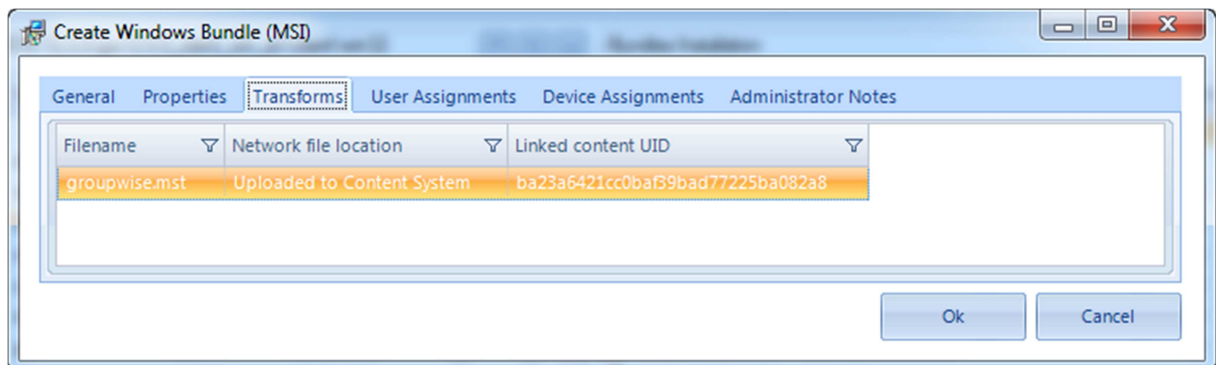
## Properties

Right-click Properties, then use the context menu to add, edit, or remove public properties for selected MSI packages. Bundle Commander Professional Edition provides a number of best practice public properties, such as the property for InstallScript-based MSI packages that can be installed without the ISSETUPDRIVEN=1 property.



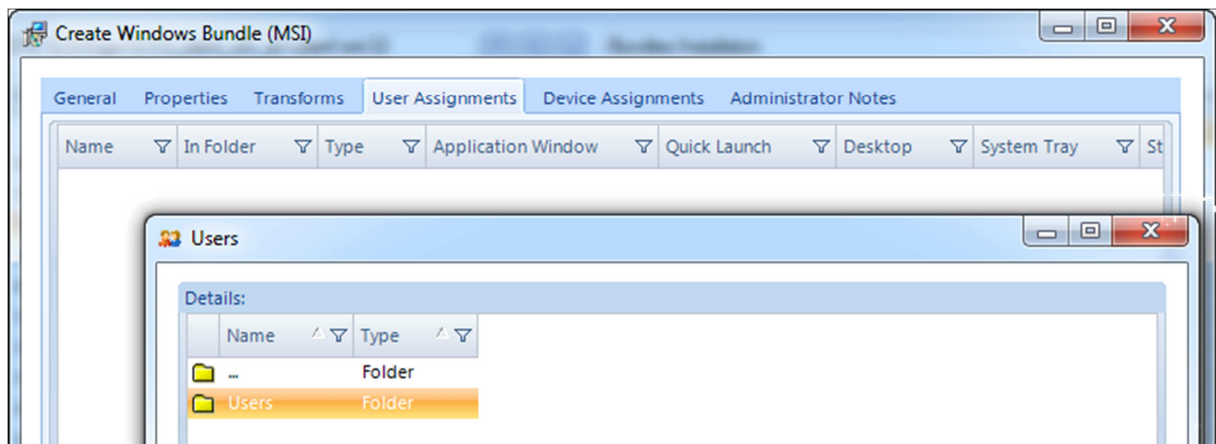
## Transforms

If you used the Configuration Wizard and saved the MSI transform file, it is automatically added to the Windows bundle. Right-click Transforms to add or remove additional transform files.

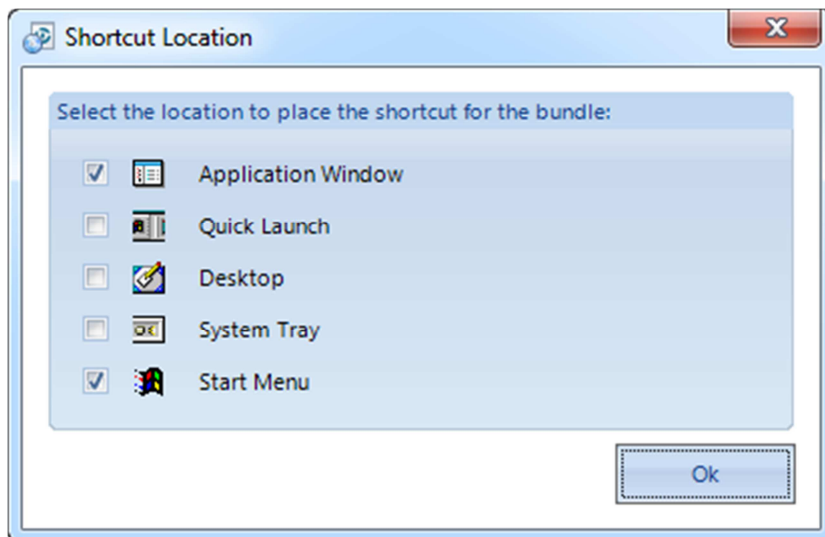


## User Assignments

Right-click User Assignments to assign the Windows bundle to one or more users.



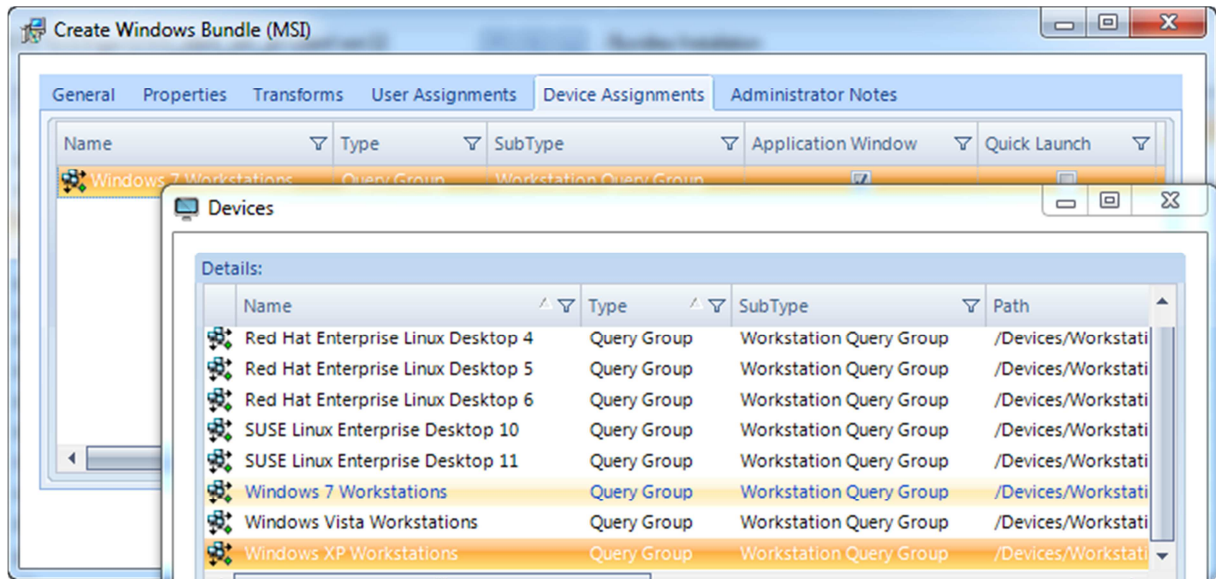
You can also set the Shortcut location accordingly.



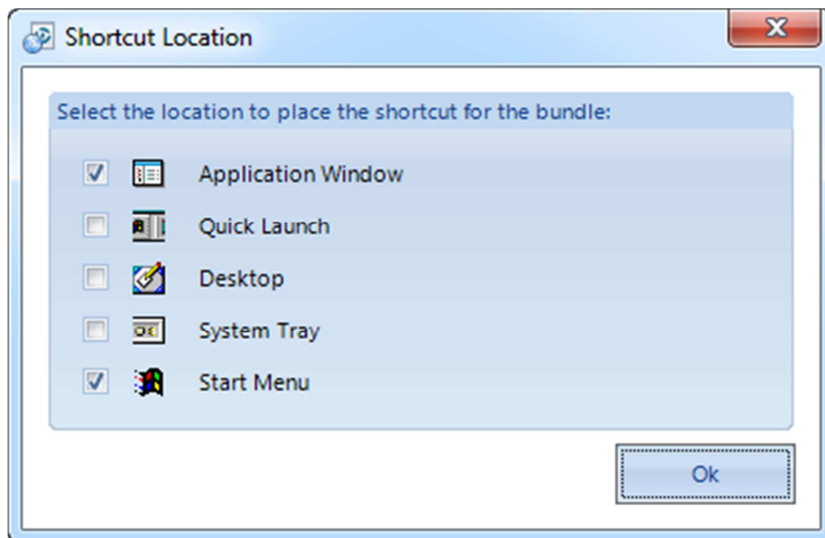


## Device Assignments

Right-click Device Assignments to assign the Windows bundle to one or more devices and device groups.

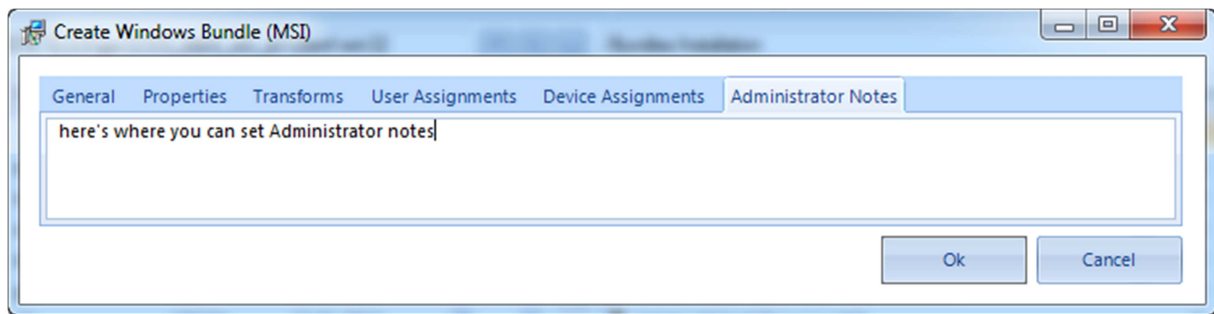


You can also set the Shortcut location accordingly.

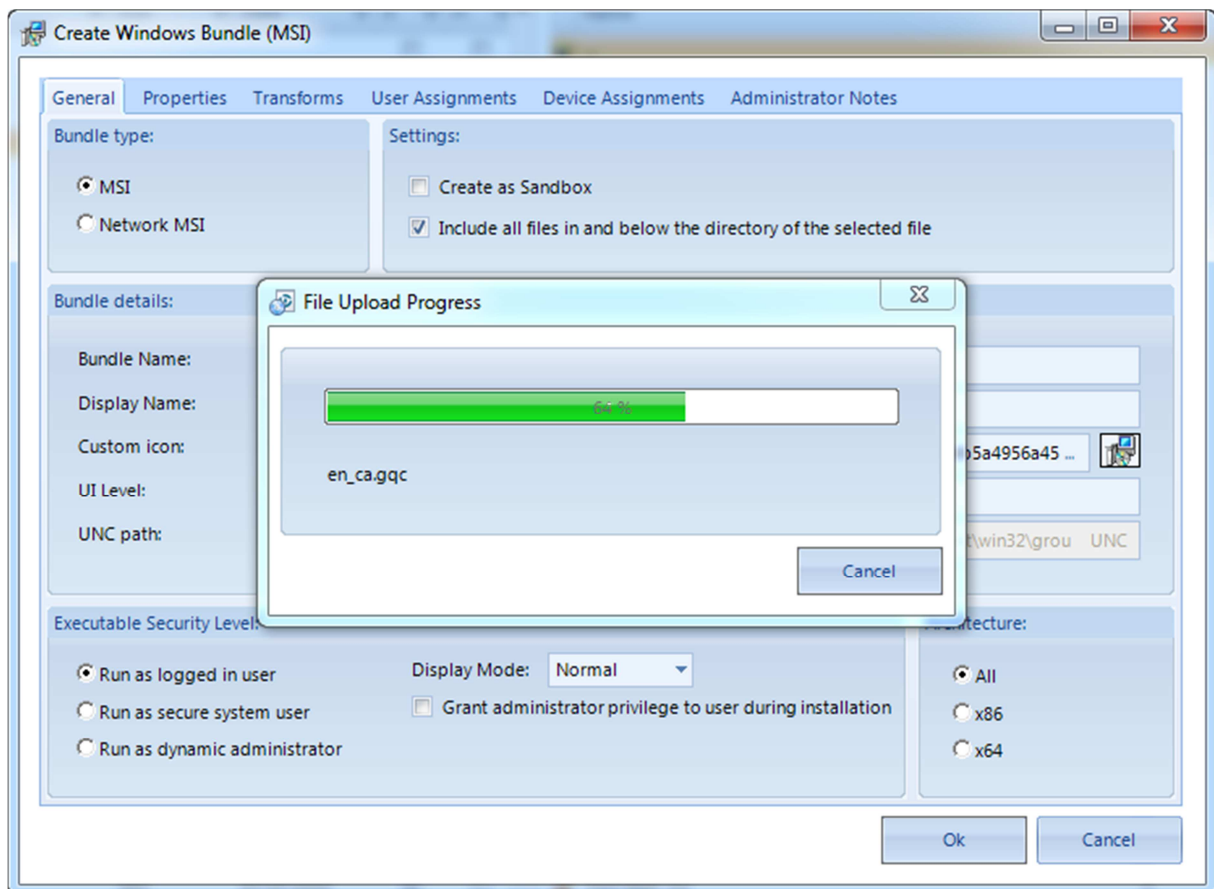


## Administrator Notes

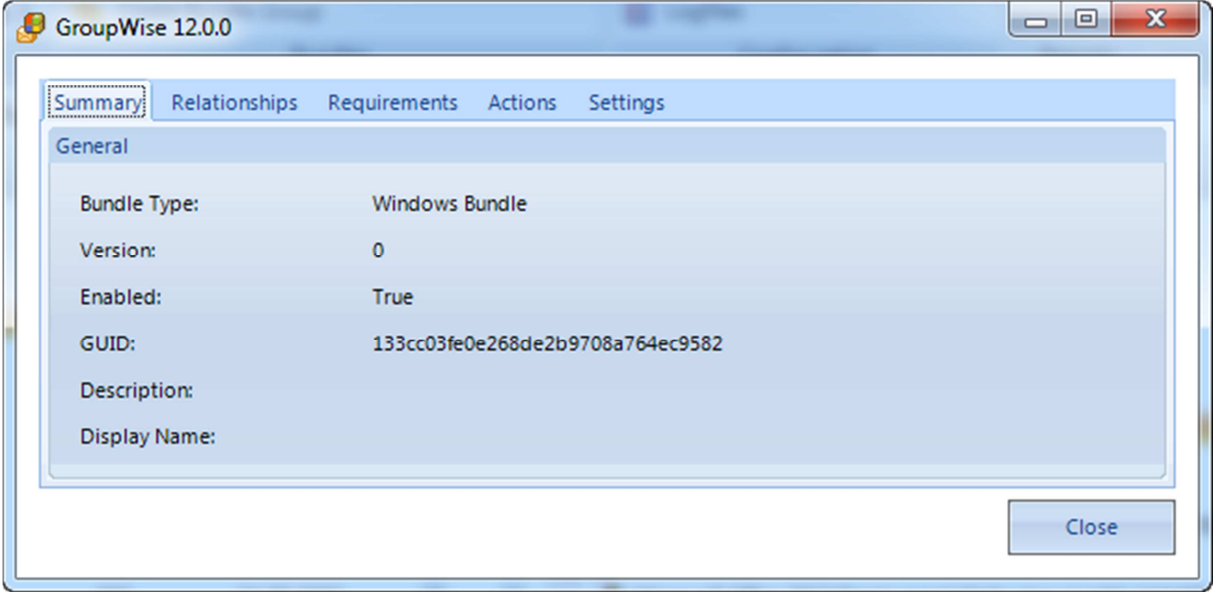
Use Administrator Notes to specify notes for the Windows bundle.



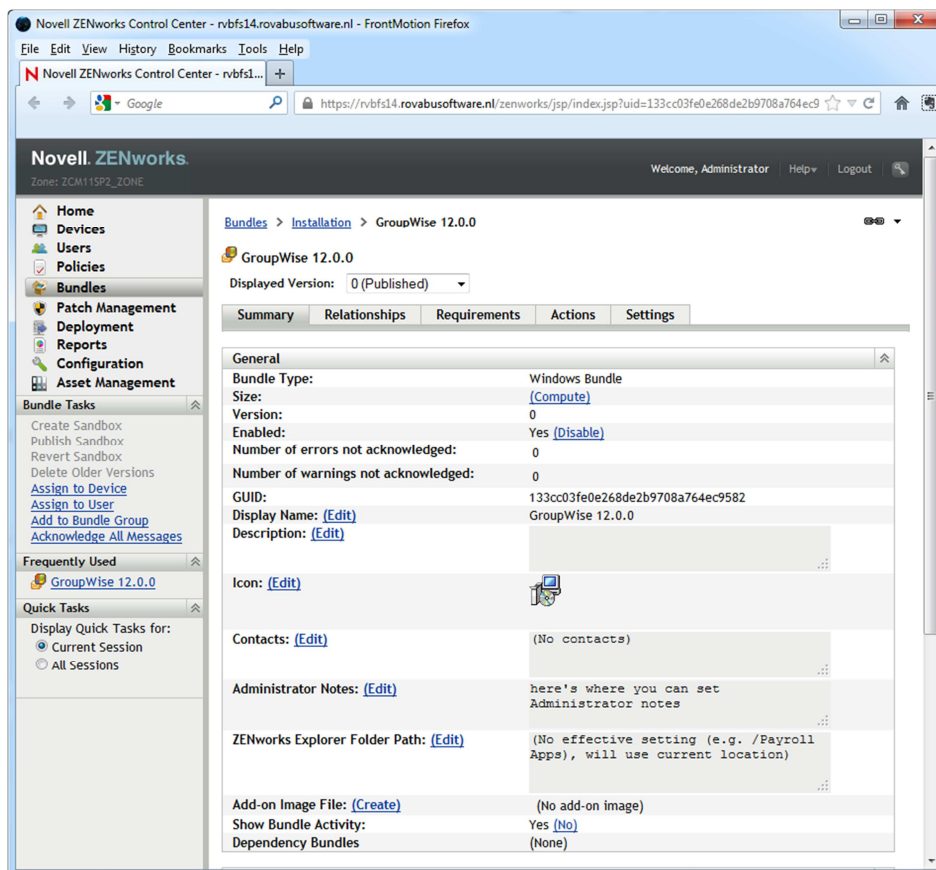
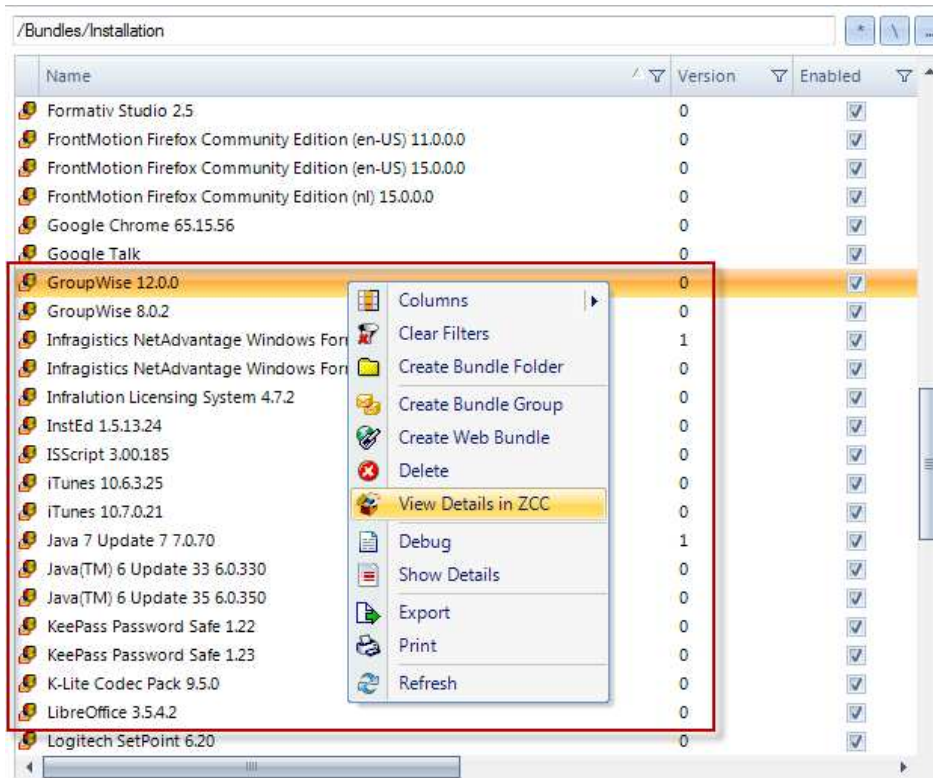
Click Ok to create the Windows bundle in the designated Bundle folder.



After the Windows bundle has been successfully created, you can right-click the bundle and use the content menu to view the available options. If you want to review a subset of the Windows bundle details, use the Show Details option.

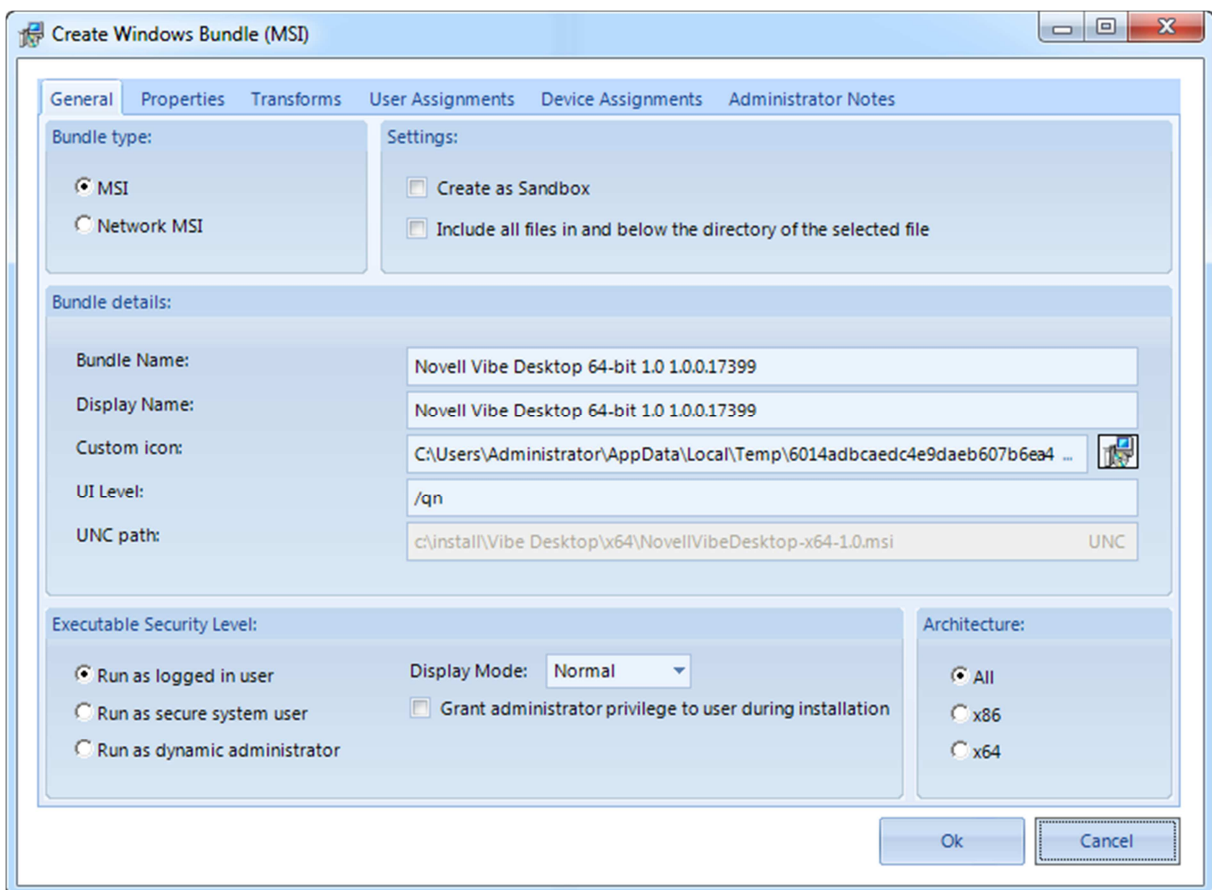
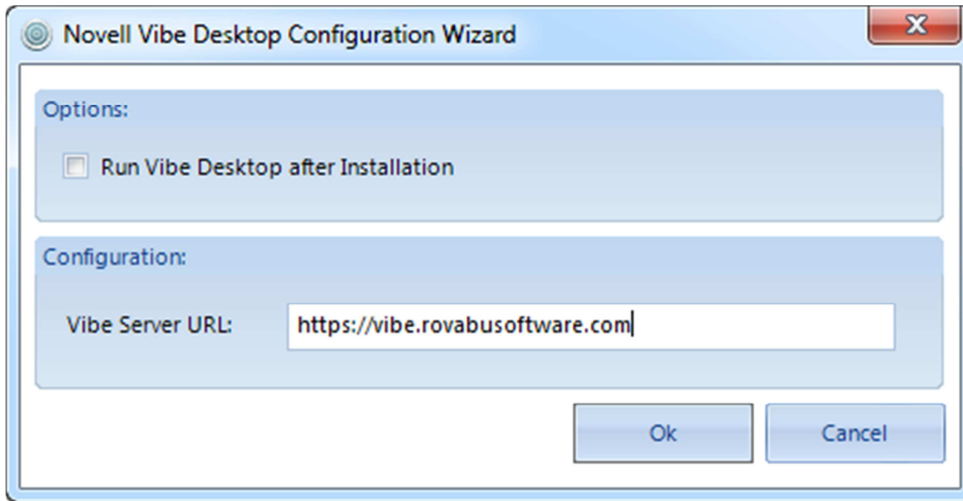


If you want to further customize the newly created Windows bundle , use the View Details in ZCC option, which redirects you to the bundle’s details in ZENworks Control Center.



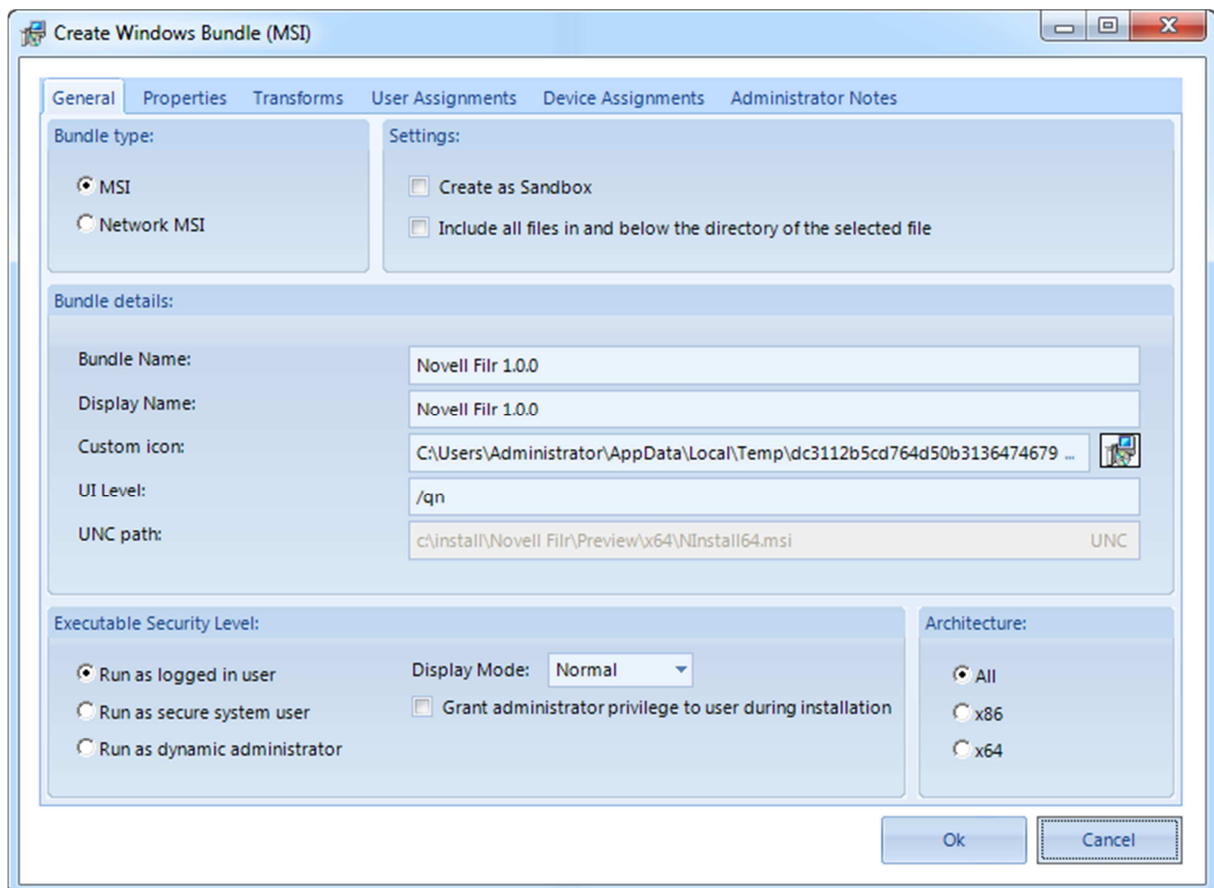
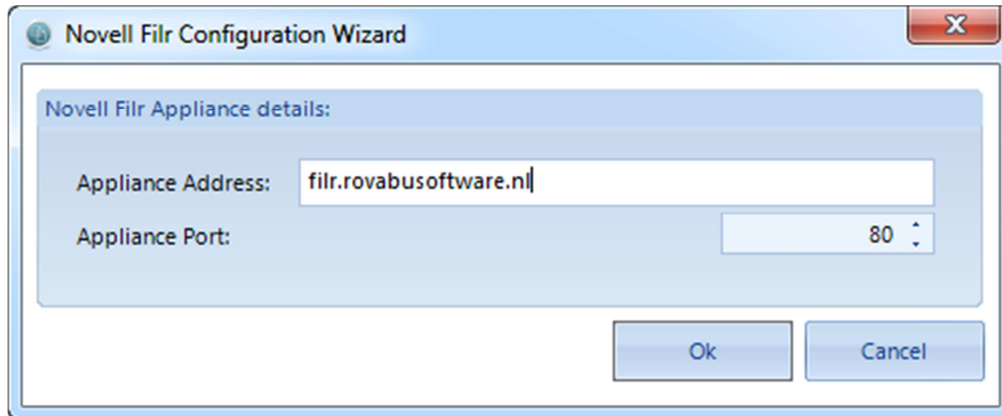
## Novell Vibe Desktop

Select one of the Novell Vibe MSIs, then use the Novell Vibe Desktop Configuration Wizard to configure the Vibe Server URL, which is saved in a MSI transform file and added to the Windows bundle.



## Novell Filr

Select one of the Novell Filr MSIs, then use the Novell Filr Configuration Wizard to configure the Filr Appliance address and port number. These values are saved in an MSI transform file and added to the Windows bundle.



## Creating Windows Bundles (MSP)

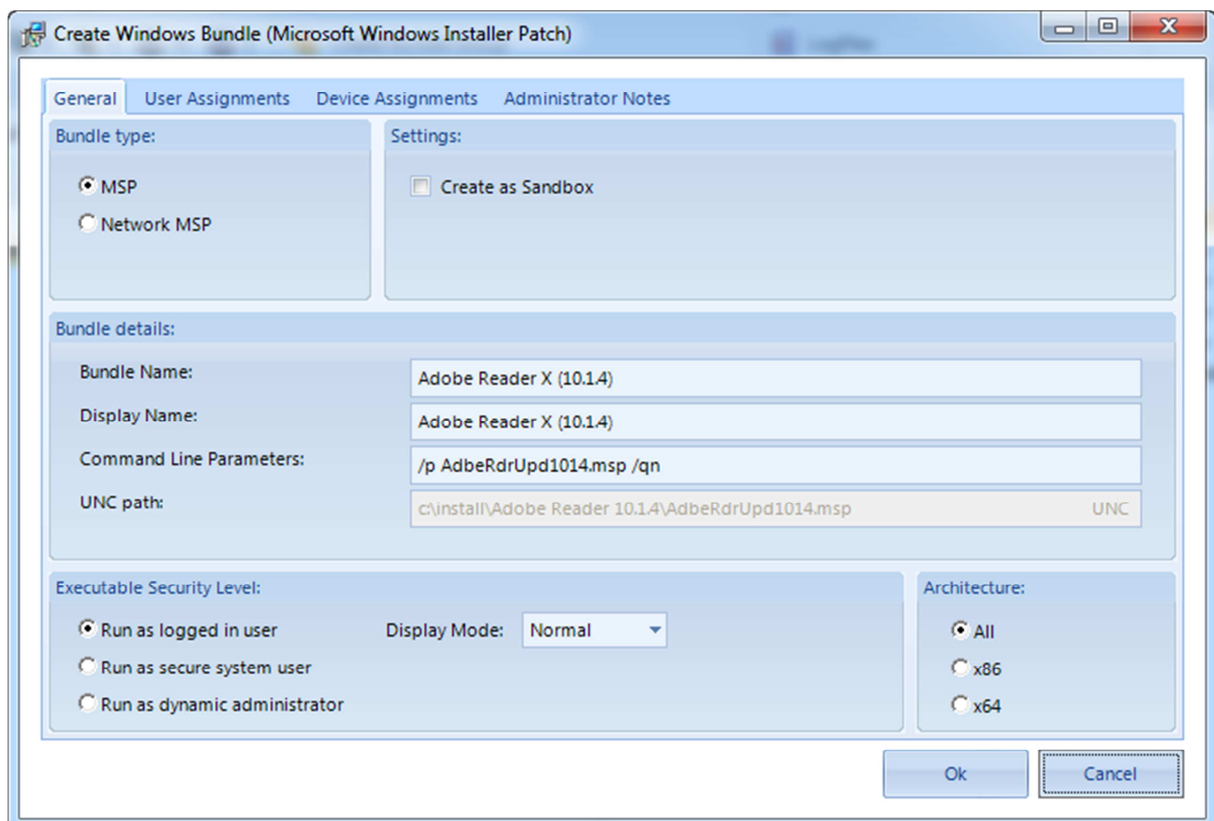
---

### General

You can use Bundle Commander Standard Edition to quickly and intuitively create a Windows Bundle from a selected MSP file, which is a Windows Installer patch file.

### Adobe Reader 10.1.4

Select the AdbeRdrUpd1014 .msp MSP package and click the Create Bundle(s) button on the ribbon bar, or right-click the package and select Create Bundle(s) from the context menu.



The Create Windows Bundle (Microsoft Windows Installer Patch) screen has different tabs.

### General

#### Bundle Type

For Bundle Type, select either MSP or Network MSP.

Selecting MSP adds one Install MSP action to the Windows bundle to install the selected MSP from the ZENworks Content Repository.

Selecting Network MSP adds one Install MSP action to install the MSP using the network path of the selected MSP.

### *Settings*

Create as a Sandbox creates the Windows bundle in a sandbox first.

### *Bundle Details*

Bundle Name shows a suggested bundle name, which can be edited if needed.

Display Name shows a suggested bundle display name, which can be edited if needed.

UNC path only appears when you set the Bundle Type to Network MSP. You can convert a drive mapping to UNC notation by using the UNC button.

### *Executable Security Level*

Use this option to set the executable security level for the Install MSI action that is added to the Windows bundle.

### *Architecture*

Adds an ARCHITECTURE=x86 requirement to the Windows bundle when the value is set to X86.

Adds an ARCHITECTURE=x64 requirement to the Windows bundle when the value is set to X64.

Adds no ARCHITECTURE requirement when the value is set to All.

### *User Assignments*

Right-click User Assignments to assign the Windows bundle to one or more users. You can also set the Shortcut location accordingly.

### *Device Assignments*

Right-click Device Assignments to assign the Windows bundle to one or more devices and device groups. You can also set the Shortcut location accordingly.



## Creating Windows Bundles (EXE) – Install Bundle Type

---

### General

With Bundle Commander Standard Edition, you can quickly and intuitively create a Windows bundle from a selected legacy setup (non-MSI setup) or an application's executable.

When you are dealing with a software setup, an Install Windows bundle is created. This Windows bundle covers only the installation of the application by using one or more Install actions.

When you are dealing with one or more application executables, a Launch Windows bundle is created. This Windows bundle covers only the start of the application by using a Launch action. You can add an Install Bundle action to a Launch Windows bundles to configure their dependencies.

When you have selected an application setup, Bundle Commander Professional Edition advises you with the correct unattended/installation parameters. With Bundle Commander Standard Edition you must manually add the parameters. A good resource to find these parameters is <http://www.itninja.com>.

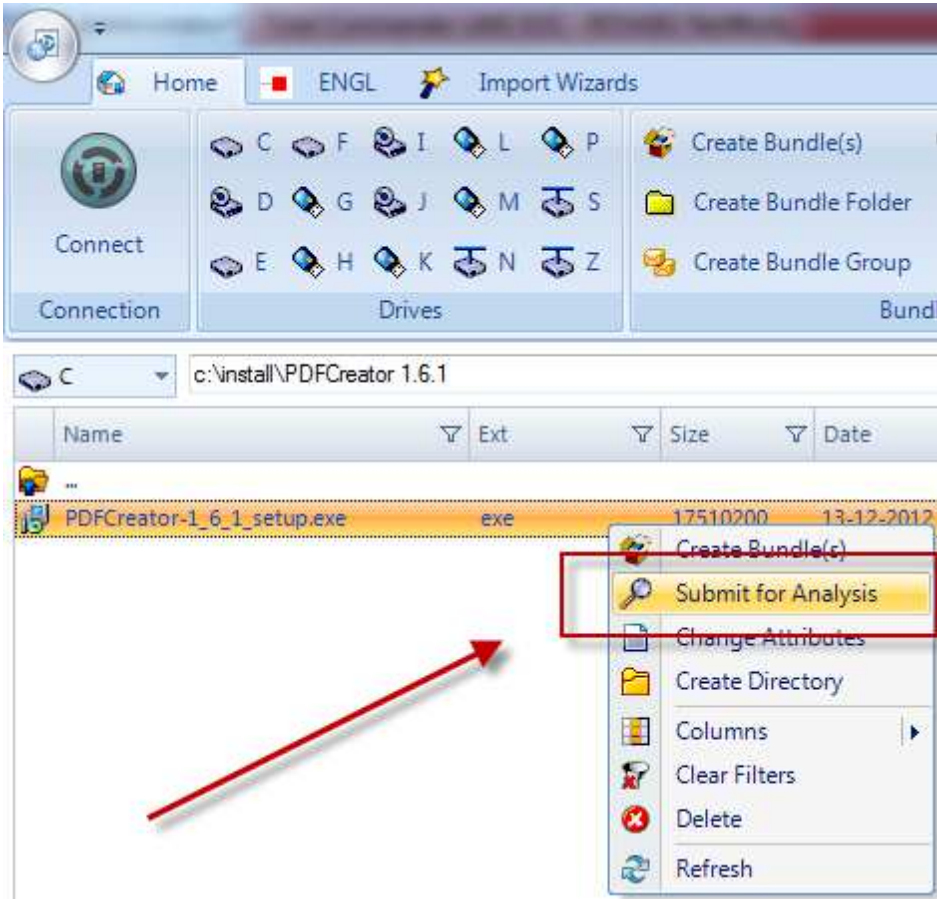
Legacy setups from Novell, like Novell iFolder and the Novell Client for Windows, are fully supported in Bundle Commander Standard Edition.

Bundle Commander Professional Edition has extensive support for vendor legacy setups (non-MSI setups). It provides consistent unattended/silent switches for legacy setups made with common setup software like NSIS, InnoSetup, Wise, InstallShield, Ethalone Ghost Installer, and InstallAware.

The Professional Edition also provides consistent naming (bundle name and bundle display name) for your Windows bundles when software setups do not provide a usable Productname and Productversion natively. Either the default name is extracted from the installer itself or it is read from our own internal database of legacy setups.

In the Professional Edition, most legacy setups are covered by these features. Our Web site has a list of setups for which support was explicitly added, either because a specific setup system was being used and our generic scanner could not determine the correct unattended/silent switches, or we needed more consistent naming.

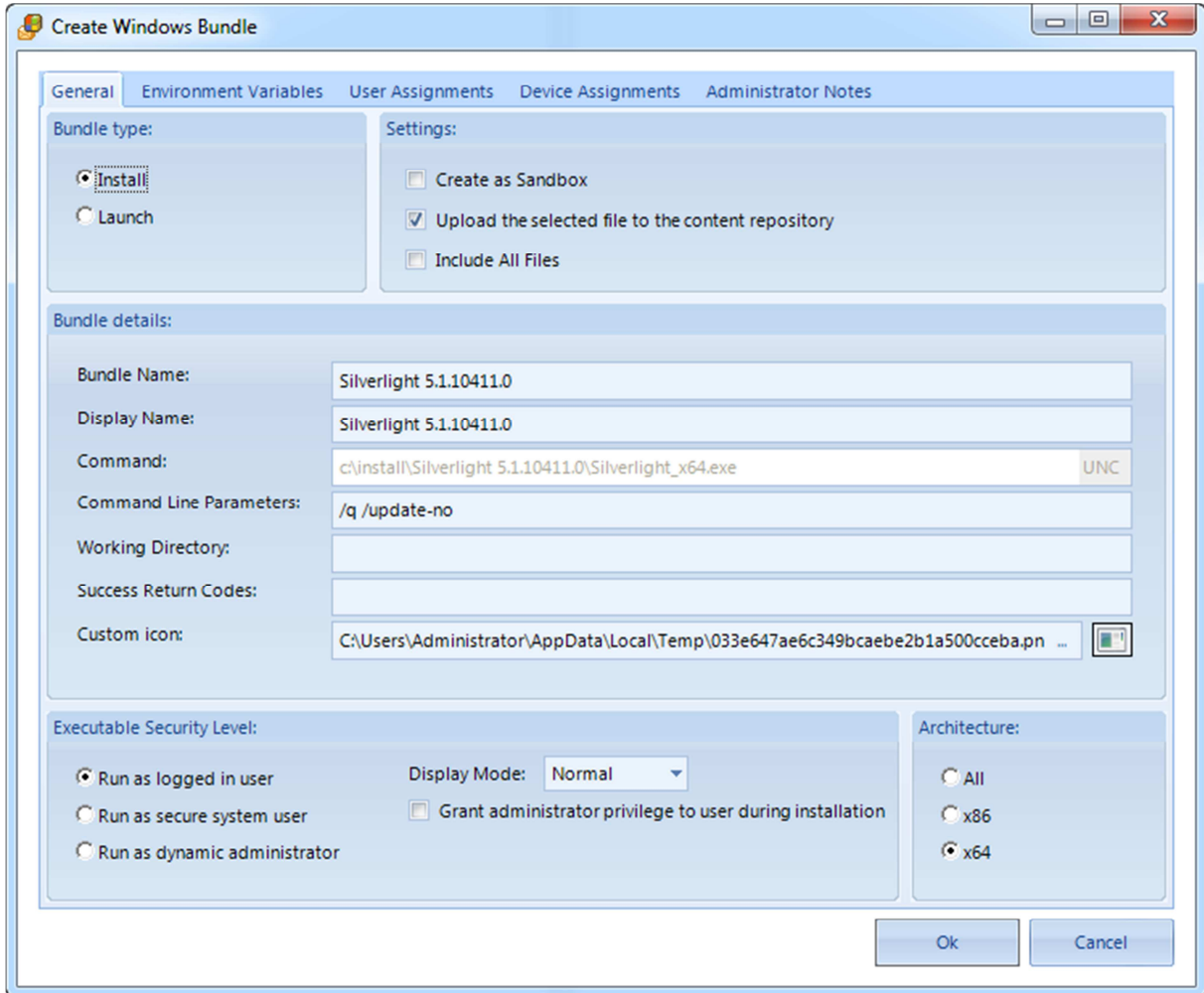
If you are using Bundle Commander Professional Edition and want to request support for a specific legacy setup that we are not yet supporting, please send us the details by selecting the setup in Bundle Commander and selecting Submit for Analysis.



## Microsoft Silverlight

Microsoft Silverlight 5.1 is a legacy setup that installs Microsoft Silverlight components.

Select the `Silverlight_x64.exe` setup file and click the Create Bundle(s) button on the ribbon bar, or right-click the setup file and select Create Bundle(s) from the context menu.



The Create Windows Bundle screen has different tabs.

## **General**

### *Bundle Type*

For Bundle Type, select either Install or Launch. Because the Silverlight executable is a software setup, the Install bundle type has been selected by default.

### *Settings*

Create as a Sandbox creates the Windows bundle in a sandbox first.

You can also select to upload the selected setup into the content repository.

An option to include all files is enabled after you select the Upload check box.. All files in the same directory as the selected file are uploaded to the content repository.

### *Bundle Details*

Bundle Name shows a suggested bundle name, which can be edited if needed.

Display Name shows a suggested bundle display name, which can be edited if needed.

Command shows the path of the selected executable. You can convert a drive mapping to UNC notation by using the UNC button.

Command Line Parameters are the command line parameters that need to be set for the selected executable. When you are working with a software setup, Bundle Commander Professional Edition provides the correct unattended/silent switches here.

Success Return Codes lets you configure success return codes when an application or application setup returns something other than 0 as the success return code after its launch.

Custom Icon allows you to configure a custom icon for the Windows bundle.

### *Executable Security Level*

Use this option to set the executable security level for the Install MSI action that is added to the Windows bundle.

### *Architecture*

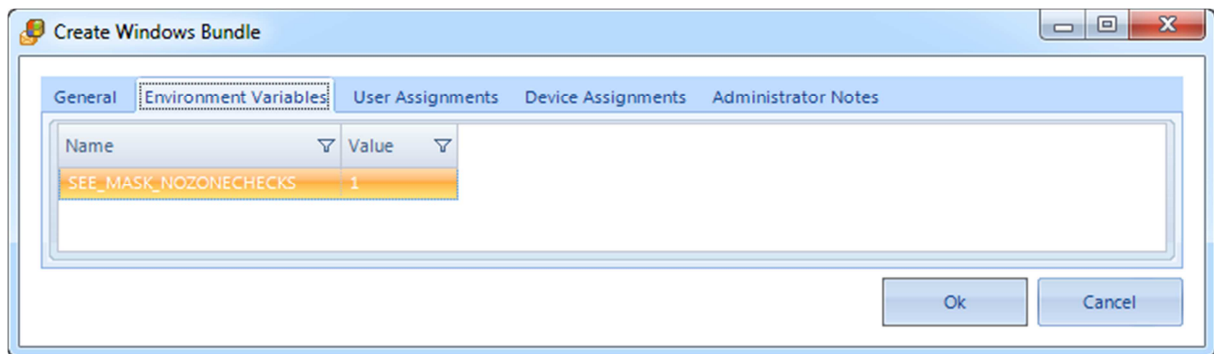
Adds an ARCHITECTURE=x86 requirement to the Windows bundle when the value is set to X86.

Adds an ARCHITECTURE=x64 requirement to the Windows bundle when the value is set to X64.

Adds no ARCHITECTURE requirement when the value is set to All. The selected setup in this case is for a 64-bit architecture only, therefore you have to set the architecture to x64.

### *Environment Variables*

Right-click Environment Variables to add, edit, or remove environment variables.



### *User Assignments*

Right-click User Assignments to assign the Windows bundle to one or more users. You can also set the Shortcut location accordingly.

### *Device Assignments*

Right-click Device Assignments to assign the Windows bundle to one or more devices or device groups. You can also set the Shortcut location accordingly.

### *Administrator Notes*

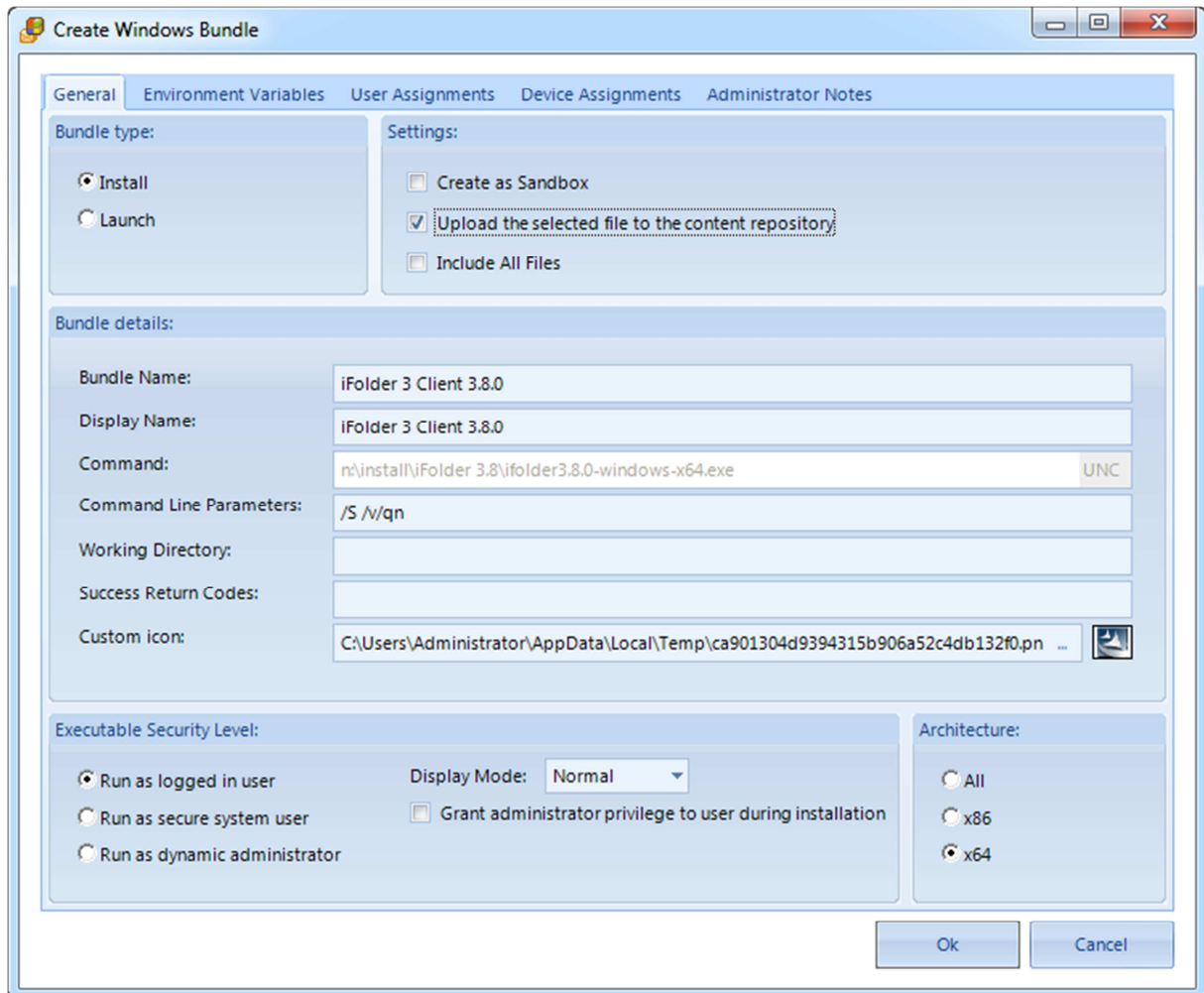
Use Administrator Notes to specify notes for the Windows bundle.

## Novell iFolder 3.8

Novell iFolder 3.8 is a legacy setup that installs the Novell iFolder client for Windows. You can download the latest 3.8 setups from <http://ifolder.com/ifolder>.

Select the `ifolder3.8.0-windows.exe` setup if you want to deploy the 32-bit version of the iFolder client on x86 architecture.

Select the `ifolder3.8.0-windows-x64.exe` setup if you want to deploy the 64-bit version of the iFolder client on x64 architecture.



## *Creating Windows Bundles (EXE) – Launch Bundle Type*

---

### **General**

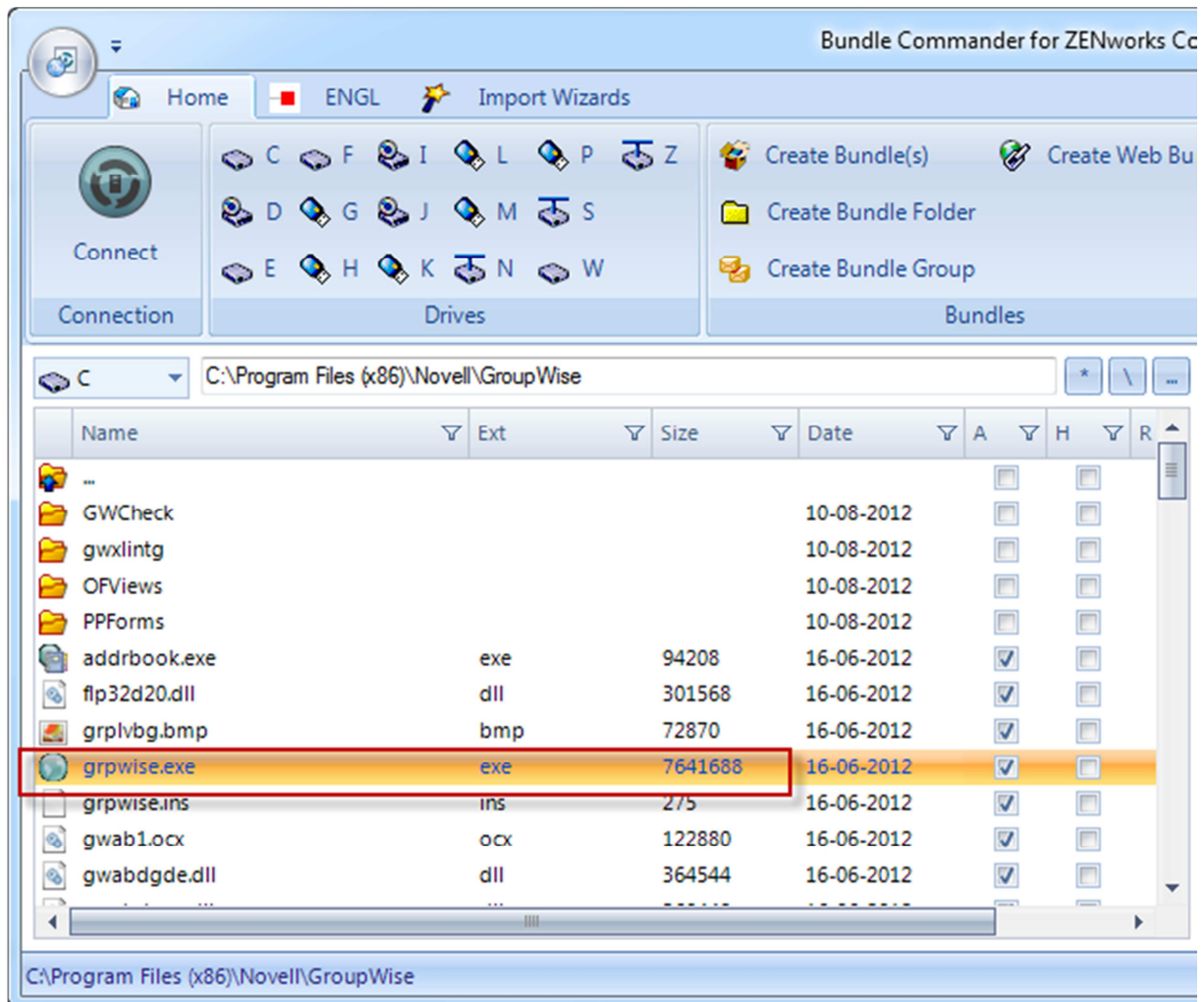
With Bundle Commander Standard Edition, you can quickly and intuitively create a Windows bundle from a selected legacy setup (non-MSI setup) or an application's executable.

When you are dealing with a software setup, an Install Windows bundle is created. This Windows bundle covers only the installation of the application by using one or more Install actions.

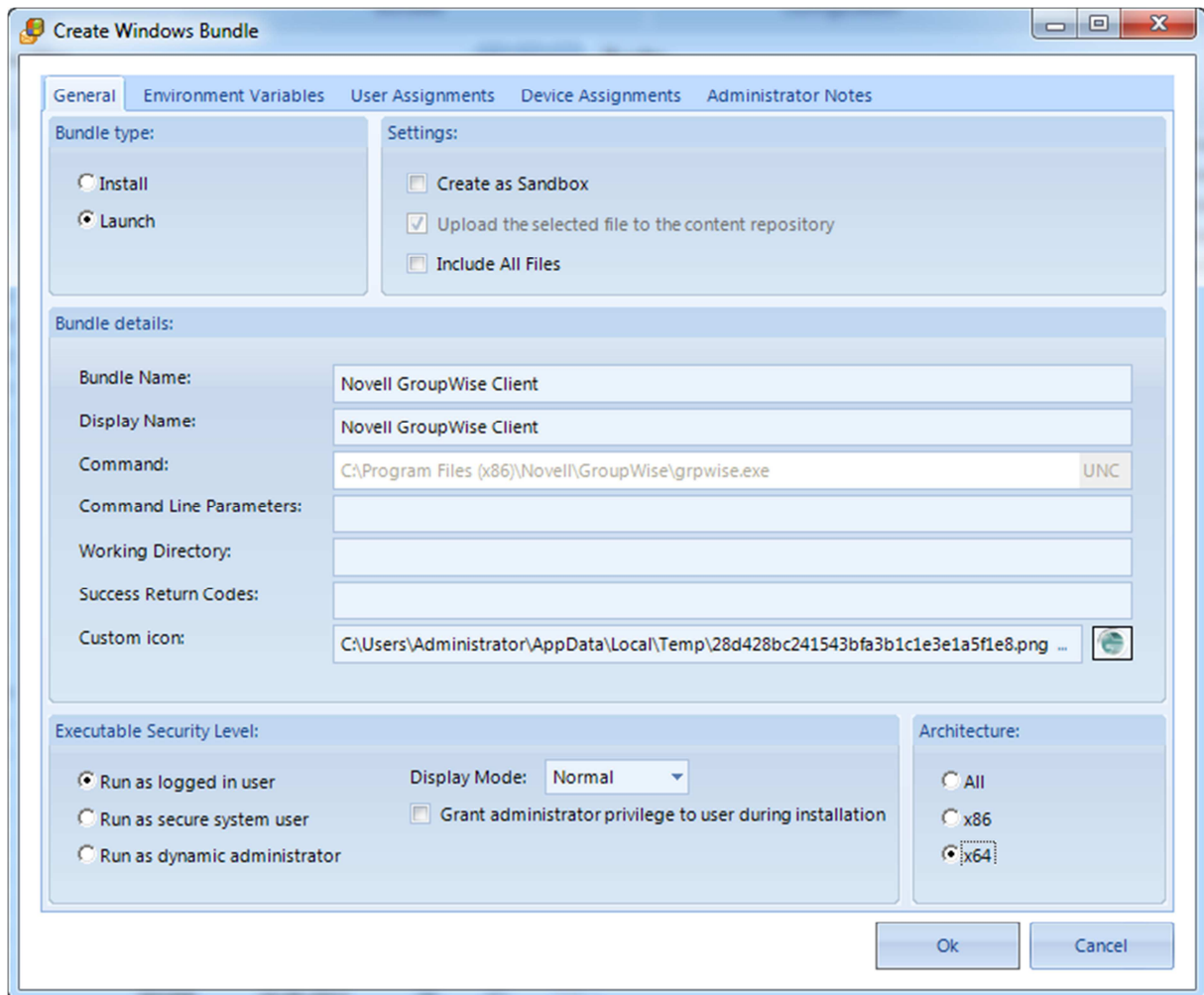
When you are dealing with one or more application executables, a Launch Windows bundle is created. This Windows bundle covers only the start of the application using a Launch action. You can add an Install Bundle action to the Launch Windows bundle to configure their dependencies.

## GroupWise 2012

In order to create Launch bundles with Bundle Commander, you must first install the application for which you want to create Launch Bundles on the device where Bundle Commander is running. Select the application executables that you want to create Launch bundles for and click Create Bundles:







The Create Windows Bundle screen has different tabs.

## **General**

### *Bundle Type*

The bundle type has been set to Launch.

### *Settings*

Create as a Sandbox creates the Windows bundle in a sandbox first.

The option to upload the selected file to the content repository is not applicable for a Launch bundle.  
The option to include all files is not applicable for a Launch bundle.

### *Bundle Details*

Bundle Name shows a suggested bundle name, which can be edited if needed.

Display Name shows a suggested bundle display name, which can be edited if needed.

Command shows the path of the selected executable. You can convert a drive mapping to UNC notation by using the UNC button.

Command Line Parameters are the parameters that need to be set for the selected executable. When you are working with a software setup, Bundle Commander Professional Edition provides the correct unattended/silent switches here.

Success Return Codes lets you configure success return codes when an application or application setup returns something other than 0 as a success return code after its launch.

Custom Icon allows you to configure a custom icon for the Windows bundle.

#### *Executable Security Level*

Use this option to set the executable security level for the Launch Executable action that is added to the Windows bundle.

#### *Architecture*

Adds an ARCHITECTURE=x86 requirement to the Windows bundle when the value is set to X86.

Adds an ARCHITECTURE=x64 requirement to the Windows bundle when the value is set to X64.

Adds no ARCHITECTURE requirement when the value is set to All.

In this example, a 64-bit executable has been selected and therefore the architecture is set to x64.

#### *Environment Variables*

Right-click Environment Variables to add, edit, or remove environment variables.

#### *User Assignments*

Right-click User Assignments to assign the Windows bundle to one or more users. You can also set the Shortcut location accordingly.

#### *Device Assignments*

Right-click Device Assignments to assign the Windows bundle to one or more devices or device groups. You can also set the Shortcut location accordingly.

#### *Administrator Notes*

Use Administrator Notes to specify notes for the Windows bundle.